

Supplemental Data

**Domain requirements and genetic interactions of the Mud1 subunit of the  
*Saccharomyces cerevisiae* U1 snRNP**

Radhika Agarwal, Beate Schwer, and Stewart Shuman

Supplemental Figure S1 and S2

Supplemental Table S1

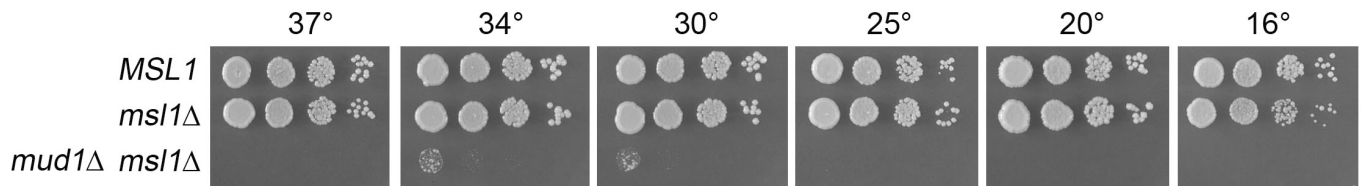


Figure S1. ***mud1Δ* is synthetically lethal with *msl1Δ***. Exponentially growing wild-type *MSL1* and *msl1Δ* cells were tested for growth in parallel with *mud1Δ msl1Δ* cells recovered after FOA selection and transfer to liquid medium. The cultures were adjusted to  $A_{600}$  of 0.1 and aliquots (3  $\mu$ l) of serial 10-fold dilutions were spotted on YPD agar plates. The plates were photographed after incubation at the indicated temperatures.

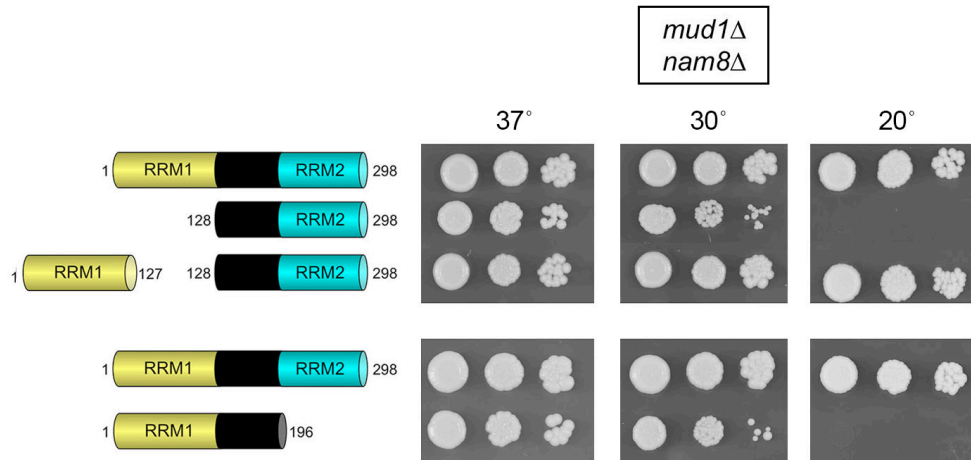


Figure S2. **Complementation of *mud1Δ nam8Δ*.** Wild-type and truncated *MUD1* alleles encoding the indicated Mud1 polypeptides were tested by plasmid shuffle for *mud1Δ nam8Δ* complementation. The viable FOA-resistant strains expressing the indicated Mud1 proteins were spot-tested for growth on YPD agar at the temperatures specified.

Table S1: Yeast strains used in this study

Strain	Genotype	Reference/Source
yRJX7	<i>MATa his3Δ1 leu2Δ0 lys2Δ0 ura3Δ0 mud2::natMX mud1::kanMX p360-MUD1 [CEN URA3 MUD1]</i>	Chang et al. 2012
yRJBB42	<i>MATa his3Δ1 leu2Δ0 lys2Δ0 ura3Δ0 nam8Δ::natR mud1Δ::kanMX p360-NAM8 [CEN URA3 NAM8]</i>	Qiu et al. 2011
yRJMM23	<i>MATa his3Δ1 leu2Δ0 lys2Δ0 ura3Δ0 msl1::natMX mud1::kanMX p360-MUD1 [CEN URA3 MUD1]</i>	This study
yRJGG8	<i>MATa his3Δ1 leu2Δ0 lys2Δ0 ura3Δ0 msl5::natMX mud1::kanMX p360-MSL5 [CEN URA3 MSL5]</i>	Schwer et al. 2013
W303a	<i>MATa leu2-3,112 trp1-1 can1-100 ura3-1 ade2-1 his3-11,15</i>	Rothstein 1983