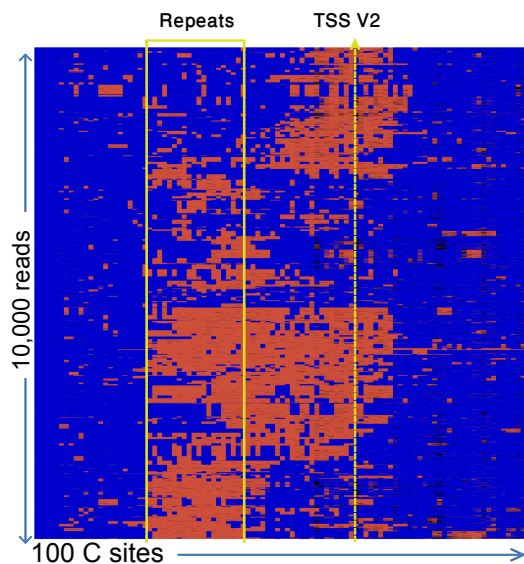
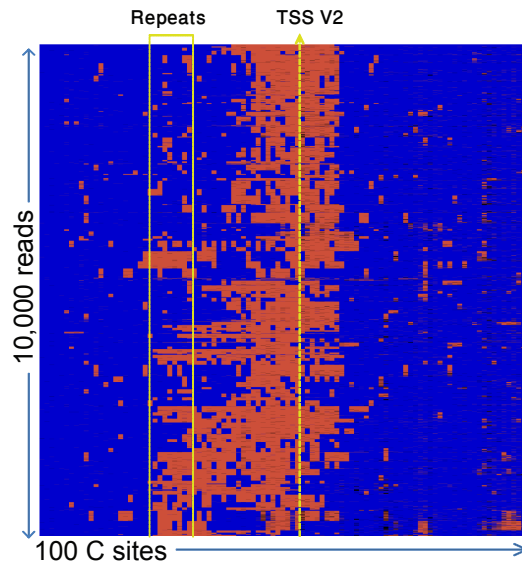


Figure S4

C9-ES-1 (WT Allele - 5 repeats)



C9-ES-2 (WT Allele - 2 repeats)



WT-ES-5 (5 repeats)

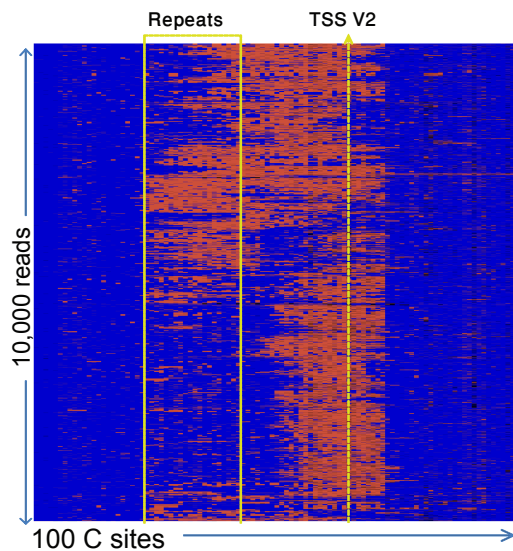


Figure S4. Bisulfite footprinting analysis by deep-sequencing across the *C9orf72* repeats in WT hESCs. DNA bisulfite deep-sequencing across the GGGGCC repeats in *C9orf72* was carried out on native DNA from three different hESC lines (C9-ES-1, C9-ES-2 and WT-ES-5) with a WT allele of 2 or 5 repeats. Bioinformatic analysis resulted in heatmaps representing 10,000 randomly selected reads, which according to their bisulfite conversion patterns were ascribed to the template strand (C-rich).