

Figure S1. Two STAT6 binding sites in the promoter region of the *CAPN14* gene affect IL-4-induced *CAPN14* promoter activity. A, B, *CAPN14* promoter reporter constructs with or without mutated STAT6 sites (See **Figure 1 A**) were transfected into esophageal epithelial cells followed by treatment with or without IL-4 or IL-13 (100 ng/mL) for 24 h. For each sample, nanoluciferase activity was normalized to firefly luciferase activity. Data are shown as mean \pm S.E.M (***, $p < 0.001$; $n = 3$ per group; data representative of three independent experiments).

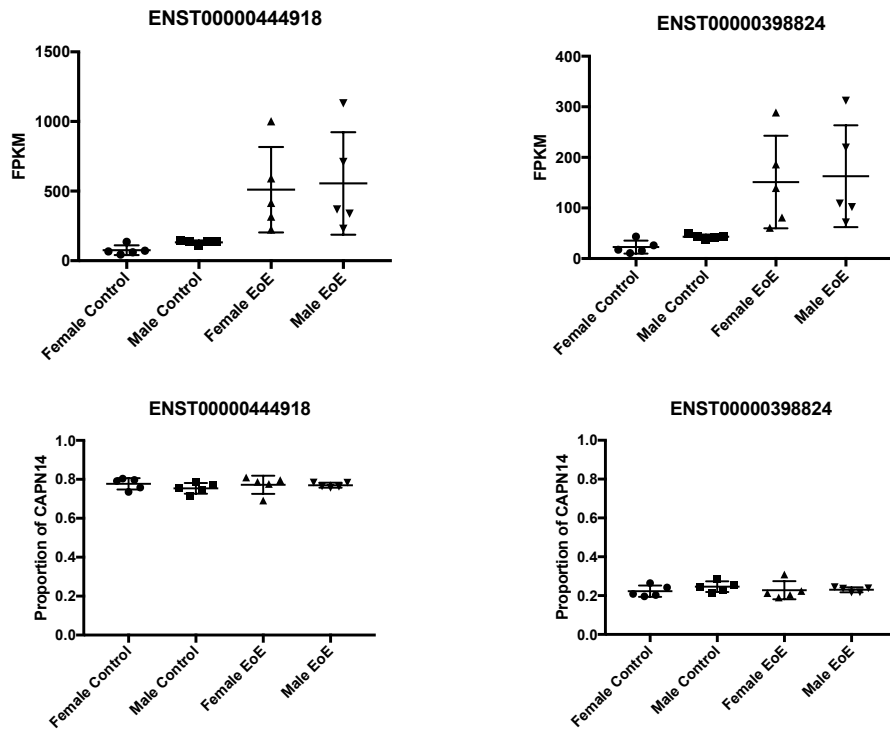
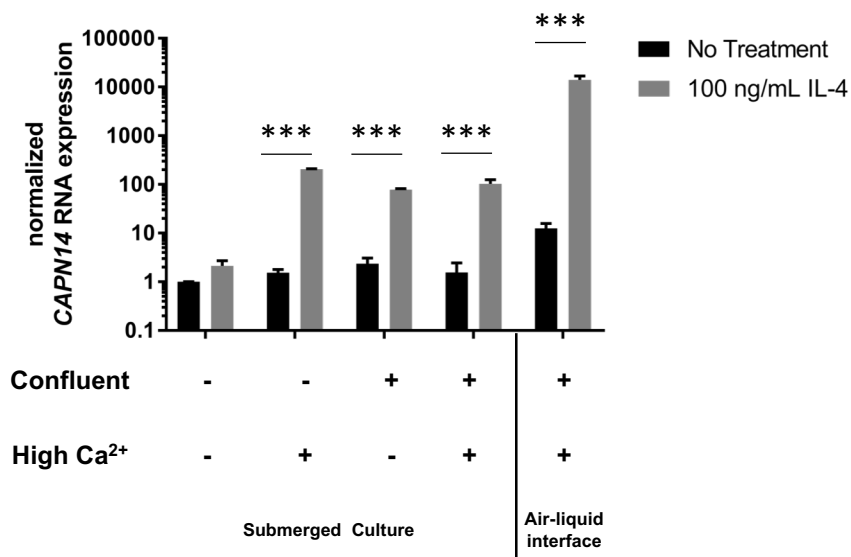


Figure S2. Expression of four isoforms of *CAPN14* from an RNAseq study of subjects with (n=10) and without (n=10) EoE.

A. CAPN14 RNA



B. Calpain-14 Protein

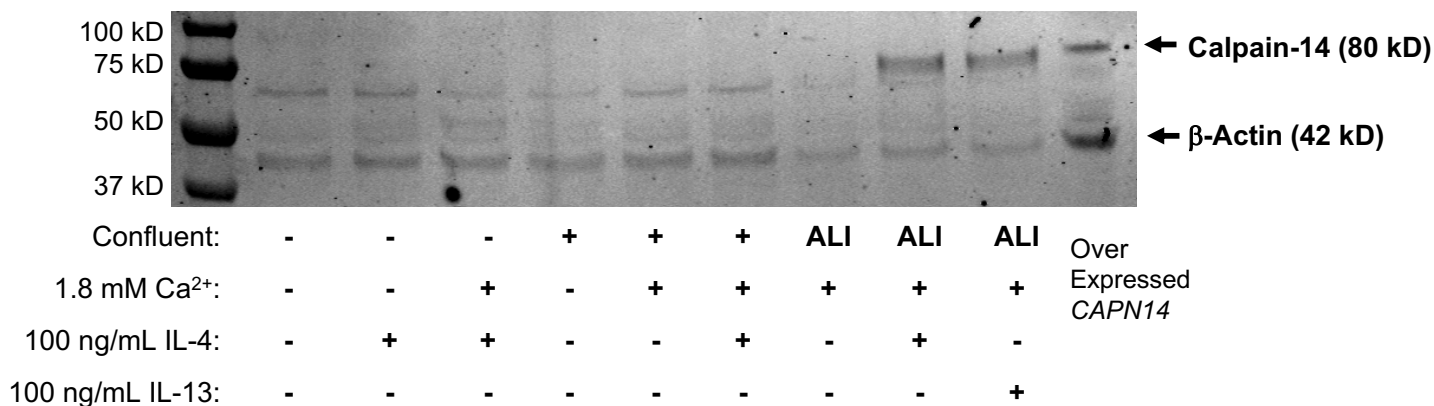


Figure S3. The expression of CAPN14 in esophageal epithelial cells is also regulated by IL-4. EPC2 esophageal epithelial cells were grown to various levels of confluence (80% or 100%, a + indicates 100% confluence) with relatively low (0.09 mM) or high (1.8 mM) Ca²⁺ and with or without 100 ng/mL IL-4 for 24 h. Cultures were grown either as a monolayer submerged culture or in an air-liquid interface (ALI) setup. *A*, RNA was isolated and CAPN14 was measured relative to the expression of the housekeeping gene GAPDH. All RNA expression values are normalized to cells at 80% confluence without high calcium or IL-4. *B*, Calpain-14 protein expression levels were assessed by immunoblot. EPC2 cells that constitutively express CAPN14 behind a CMV promoter were used as a positive control for calpain-14 protein expression. RNA and protein level expression: ***, t-test p-value<0.001, n=3-5 per group, data representative of 4 independent experiments.

Supplemental Table 1. Table of primers and probes

Luciferase Reporter Construct Primers

	5' to 3'
CAPN14 PCR Primer Forward	CT <u>Actcgag</u> GATTCTGCATGCAATGTGCT
CAPN14 PCR Primer Reverse	GGA <u>agatct</u> GGAAGATGTACCCAGGCTGA
rs76562819 to Non-Reference SDM Primer Forward	GCCTTAATGAGAGAG <u>G</u> GTTAGTCATCTTCTC
rs76562819 to Non-Reference SDM Primer Reverse	GAGAAGATGACTAAC <u>C</u> CTCTCTCATTAAAGGC
STAT6 Site 1 Scramble SDM Primer Forward	TTTCTCTGTATGGTG <u>CTATGGCATC</u> ATAATTGGATTTGTG
STAT6 Site 1 Scramble SDM Primer Reverse	CACAAATCCAATTAT <u>GATGCCATAG</u> CACCATACAGAGAAA
STAT6 Site 2 Scramble SDM Primer Forward	GGGTA <u>CTCCACTCCCTCCGAACTCA</u> CACACAGTGGGGAGG
STAT6 Site 2 Scramble SDM Primer Reverse	CCTCCCACTGTGTG <u>TGAGTTCGGAG</u> GGGAGTGGAGTACCC
STAT6 Site 3 Scramble SDM Primer Forward	ACTCTACCAAATGAC <u>ACTCAGCATC</u> ACCAGAGCTGGAGGG
STAT6 Site 3 Scramble SDM Primer Reverse	CCCTCCAGCTCTGGT <u>GATGCTGAGT</u> GTCATTTGGTAGAGT