

Lethal interaction of nuclear and mitochondrial genotypes in *Drosophila melanogaster*

Tiina S. Salminen, Giuseppe Cannino, Marcos T. Oliveira, Päivi Lillsunde, Howard T. Jacobs and
Laurie S. Kaguni

SUPPLEMENTARY DATA

SUPPLEMENTARY FIGURE LEGENDS

Figure S1

Lifespan curves of cybrid strains as indicated. Curves for a given sex and mitochondrial haplotype show statistically significant differences between nuclear backgrounds ($p < 0.001$) except for mtWT5A, where nORT and *ntko*^{25r} males were not significantly different, and females showed significance only at the $p < 0.05$ level.

SUPPLEMENTARY TABLE

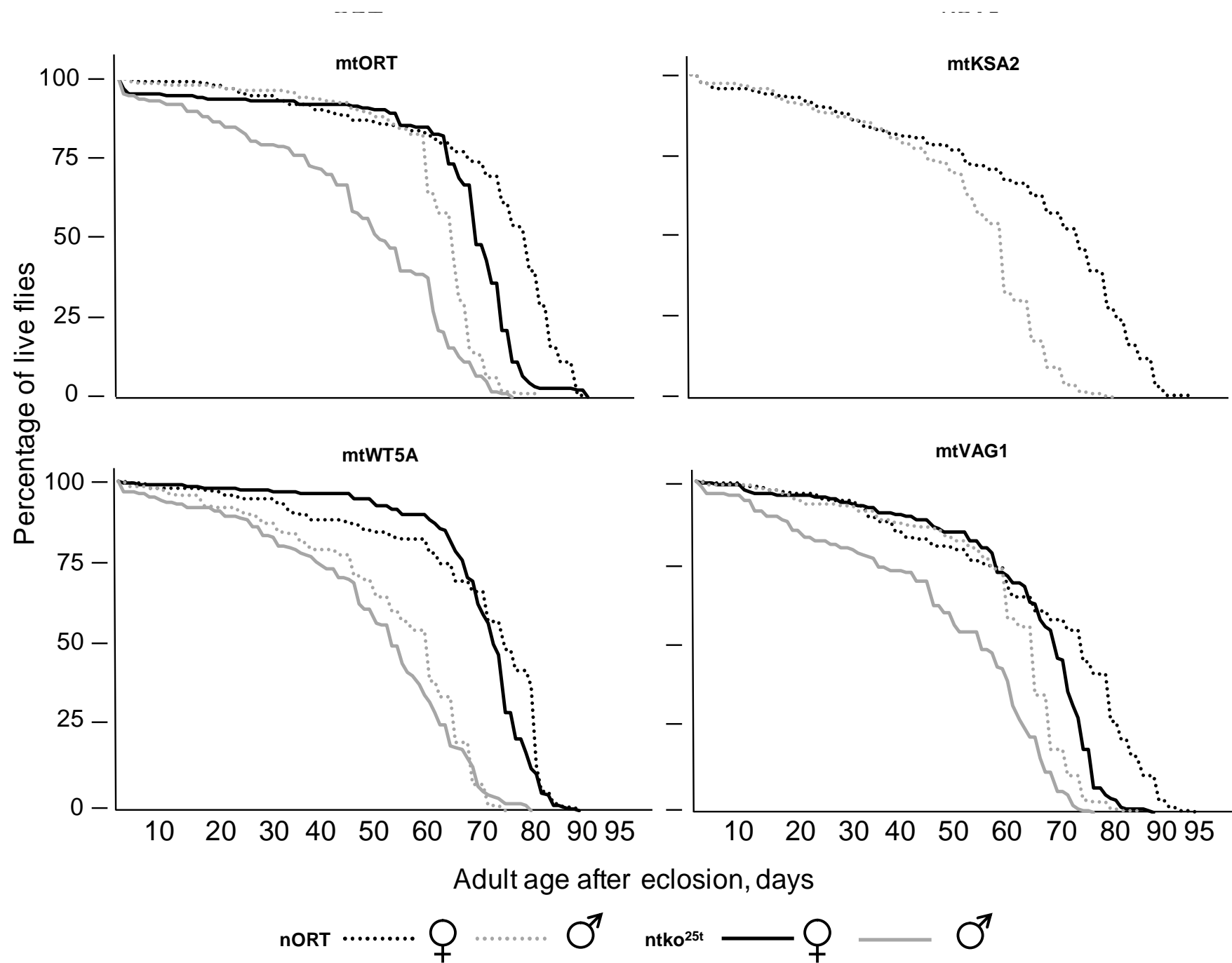
Table S1

Primers for PCR amplification¹ and cycle-sequencing² of UQCR-C1

Primer name	Sequence, 5'→3'	Tm, °C	Role
UQCRC1_F1	GTCGGCCAATATTTTCGTGT	59.8	PCR & sequencing, first half
UQCRC1_F2	GAGATGCAGGAGGTGGAGAG	59.9	PCR & sequencing, second half
UQCRC1_R1	AGCGCATATTCTGCGTCAC	60.0	Sequencing, first half
UQCRC1_R2	GCCACTCCGTTGTTCTTCTC	59.9	Sequencing, first half
UQCRC1_R3	CCTTGCCAATGGACCTAAAT	58.9	Sequencing, first half
UQCRC1_R4	GGGTCGCACACGAAGTAAAT	60.0	PCR, first half
UQCRC1_R5	TACTGATCCTCTGGGGGTGA	60.5	Sequencing, second half
UQCRC1_R6	TTGATGCGGCAGATATACCA	60.1	PCR, second half

¹yielding PCR products of 1778 and 1307 bp, using 'long PCR' with 6 min extension time

²using BigDye Terminator reaction kit (ThermoFisher Scientific)



Salminen et al, Figure S1