

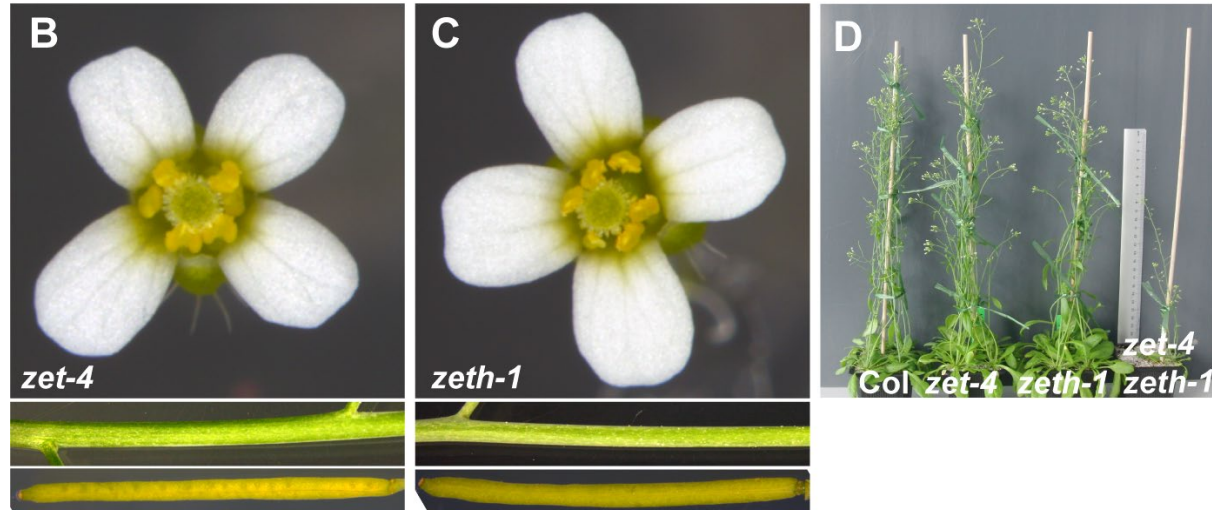
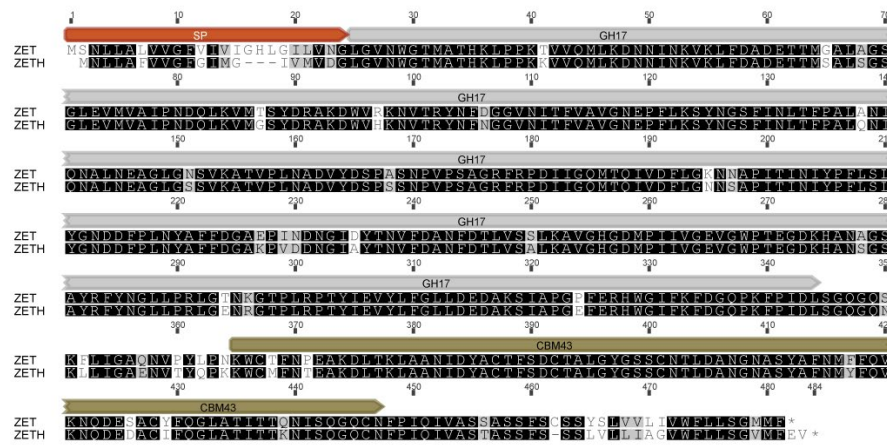
1 Asymmetric redundancy of *ZERZAUST* and *ZERZAUST HOMOLOG* in different
 2 accessions of *Arabidopsis thaliana*

3

4 Supplementary data

5

A



7 **Fig. S1.** A) Alignment of ZET and ZETH amino acid sequences. B) *zet-4*. C) *zeth-1*. Flower,
 8 stem and silique morphology is essentially normal. (D) Whole-plant appearance. Genotypes
 9 are indicated.

10

11



12 **Fig. S2. Evolutionary history of ZET (AT1G64760) and ZETH (AT2G19440).**

13 Phylogenetic tree showing the evolution of the ZET and its closest homolog (ZETH). The

14 tree shows that duplication is specific to Arabidopsis and it is not present in any other

15 Brassicaceae members. This phylogenetic analysis is adapted from the source:

16 <http://ensembl.gamene.org>. Full version of the tree is available at <https://bit.ly/2Cx1EWn>.

17

18 **Supplementary Table S1. Primers used in this study.**

Primer Name	Sequence (5'-3')
ZETHCol F	ATCCCGGGCTAGGTGTCAACTGGGGAACAATG
ZETHCol R	TAGGATCCCATATTATGCAATTTAATACATGG
ZETHLer F/	ATCCCGGGCTAGGTGTGAACTGGGGAACAATG
ZETHLer R	TAGGATCCATCACGTACATTAAGTCCGTTAG
ZETqRT F	TCAAGATGAGAGTGCTTGCTATTTT
ZETqRT R	CACAACCAAAGAATAAGACGAACAAGA
ZETHqRT F	CCAGGATGAGGATGCTTGATCTTC
ZETH qRT R	TCCTGATAAGAGAAACCAAACCTCCAGC
DT1-F0 ZETH	TGTAATGATCAGCTTAAGGTTGTTTTAGAGCTAGAAATAGC
DT2-R0 ZETH	AACAACCTTAAGCTGATCATTACAATCTCTTAGTCGACTCTAC
DT1-BsF ZETH	ATATATGGTCTCGATTGTAATGATCAGCTTAAGGTTGTT
DT2-BsR ZETH	ATTATTGGTCTCGAAACAACCTTAAGCTGATCATTACAA

19

20