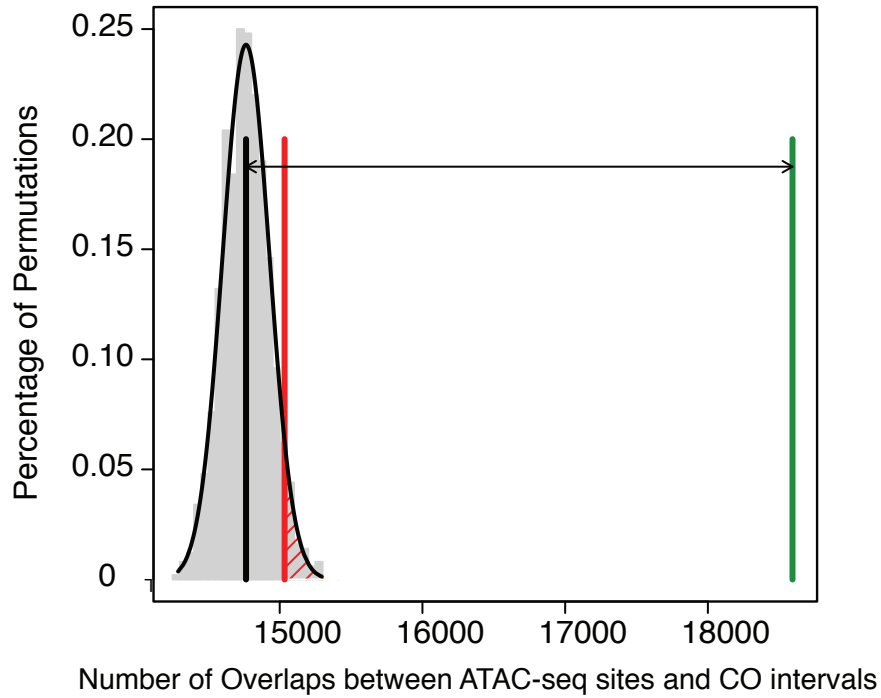


A



B

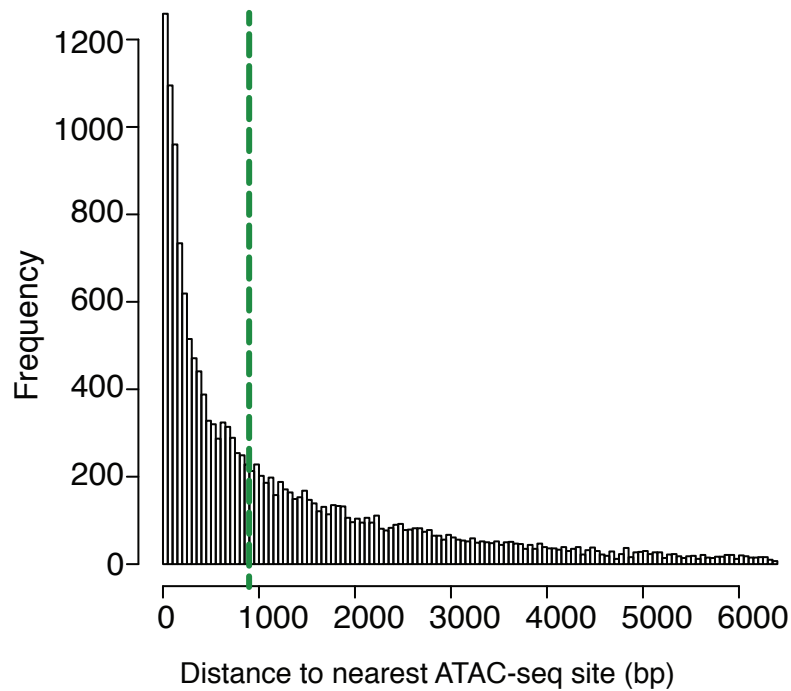


Figure S14. Crossovers relative to ATAC-seq sites. A) Permutation test of overlaps between COs and ATAC-seq sites. The vertical black line indicates mean number of overlaps expected in 1000 random permutations. Vertical red line indicates the number of overlaps where $p = 0.05$. Vertical green line indicates the observed number of overlaps. Double-headed arrow highlights the difference between the mean of 1000 permutations and the observed number. B) Distribution of distances from CO breakpoints to the nearest ATAC-seq site border. Vertical dashed green line indicates the median. The greatest 5% of distances are omitted from this plot for ease of visualization.