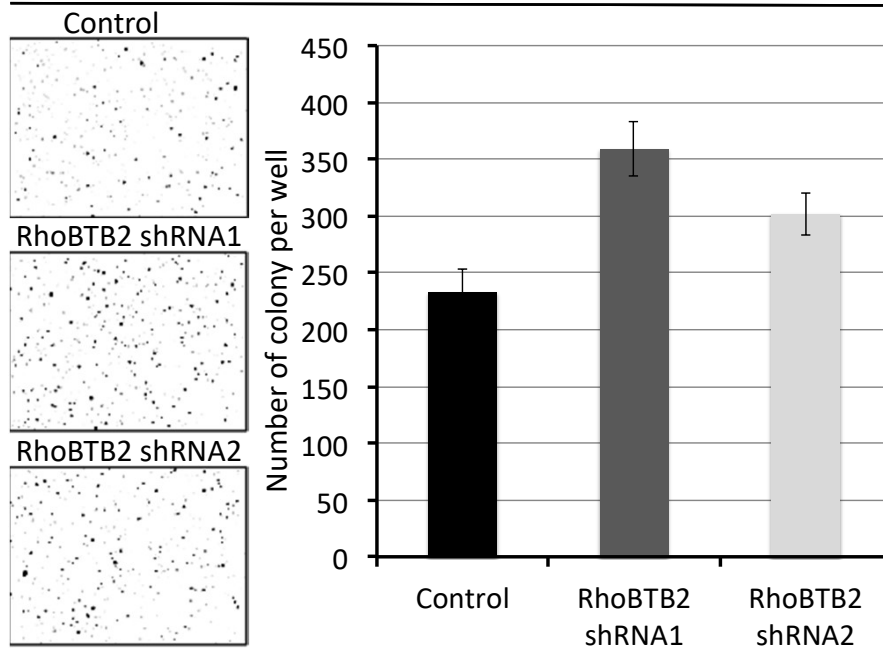
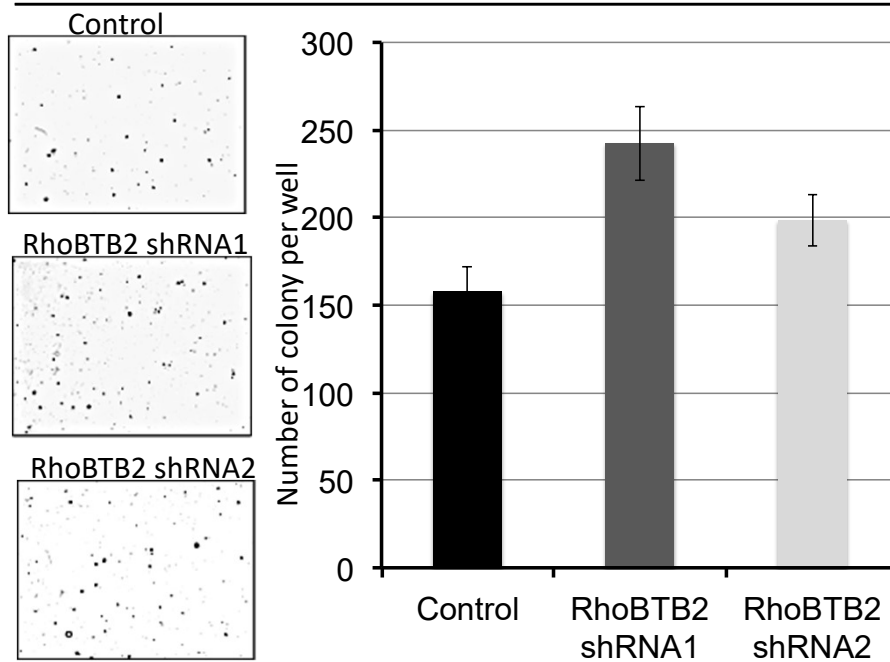


A

Cells: HT-15

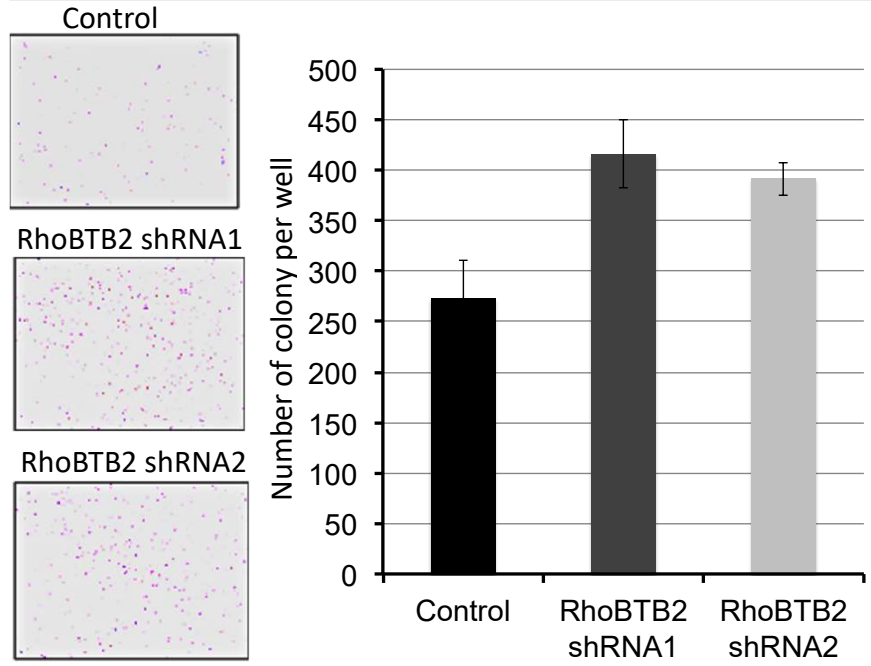
**B**

Cells: MDA-MB-468

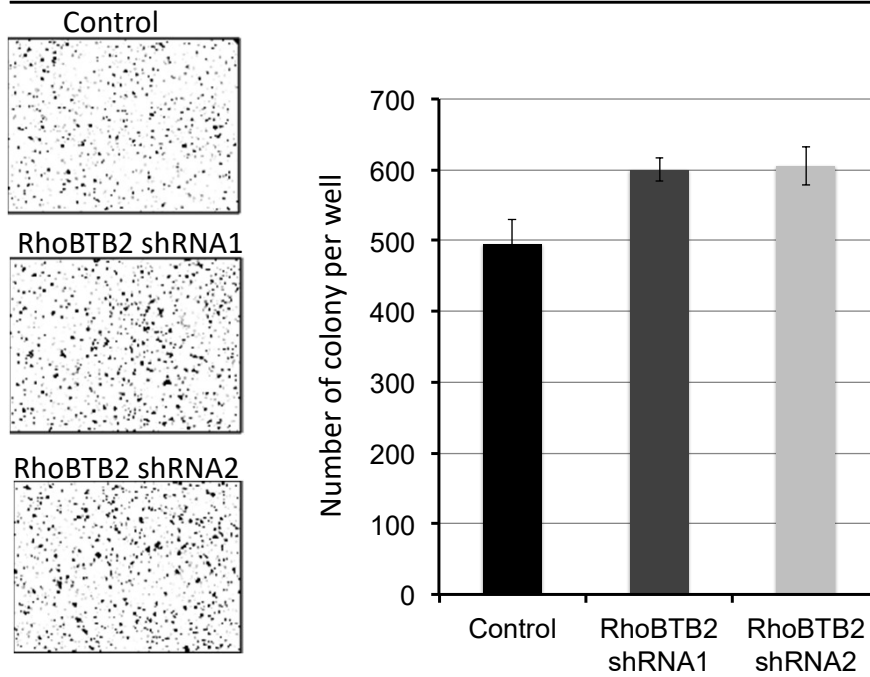


C

Cells: HeLa

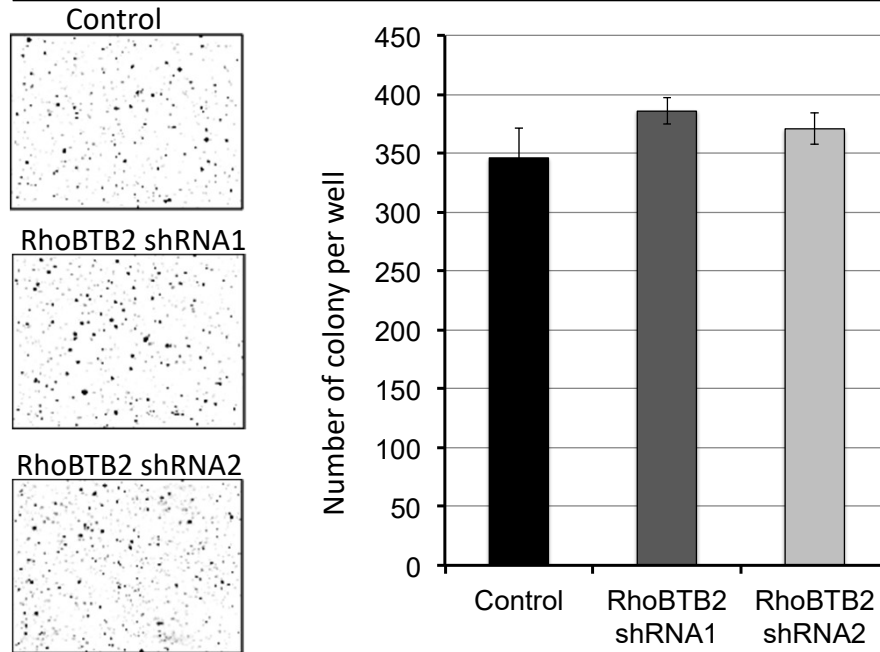
**D**

Cells: HCT116



E

Cells: HCT29

**Supplementary Figure S3: Anchorage-independent Growth in Cancer Cell Lines.**

Cancer cell lines HT-15 (colorectal cancer, **A**), MDA-MB-468 (breast cancer, **B**), Hela (cervical cancer, **C**), HCT116 (colorectal cancer, **D**), and HT29 (colorectal cancer, **E**) were transduced with a control or two independent RhoBTB2-specific shRNAs and seeded in soft agar. Colonies were stained and quantified. Error bars indicate SD of 3 independent experiments (independent transductions).