

SUPPLEMENTARY MATERIALS for Chan, Prasad, and Matsudaira, “Genetic selection based on a Ste6C-HA-Ura3* substrate identifies new cytosolic quality control alleles in *Saccharomyces cerevisiae*”**

TABLE S1

Strain	Genotype	Source
W303 WT	<i>MATa, leu2-3,112, his3-11, trp1-1, ura3-1, can1-100, ade2-1</i>	P. Walter (UCSF)
SNY106	<i>MATa, pRP37, W303 background</i>	This study
SNY105	<i>MATa, ubr1::KANMX, pRP37, W303 background</i>	This study
RPY454	<i>MATa, san1::KANMX, pRP37, W303 background</i>	This study
SNY329	<i>MATa, san1::KANMX, ubr1::KANMX, pRP37, W303 background</i>	This study
RPY145	<i>MATa, pRP22, W303 background</i>	Prasad et al., 2012
RPY205	<i>MATa, pRP42, W303 background</i>	Prasad et al., 2010
SNY726	<i>MATa, pDN431, W303 background</i>	This study
SNY736	<i>MATa, pDN1002, W303 background</i>	This study
SNY1128	<i>MATa, pSM1083, W303 background</i>	This study
SNY1261	<i>MATa, pRP37, pRS314, W303 background</i>	This study
SNY1246	<i>MATa, pRP37, pSN87, W303 background</i>	This study
SNY1262	<i>MATa, pRP37, pSN59, W303 background</i>	This study
SNY1145	<i>MATa, pRP22, pRS314, W303 background</i>	This study
SNY1146	<i>MATa, pRP22, pY109, W303 background</i>	This study
SNY1249	<i>MATa, pRP22, pSN87, W303 background</i>	This study
SNY1405	<i>MATa, pRP22, pSN59, W303 background</i>	This study
SNY1333	<i>MATa, pRP42, pRS314, W303 background</i>	This study
SNY1150	<i>MATa, pRP42, pY109, W303 background</i>	This study
SNY1247	<i>MATa, pup2-L101P, lcl-K2E, rpc31-G10A, pRP37, pRS314, W303 background</i>	This study
SNY1248	<i>MATa, pup2-L101P, lcl-K2E, rpc31-G10A, pRP37, pSN87, W303 background</i>	This study
SNY672	<i>MATa, pup2-L101P, lcl-K2E, rpc31-G10A, pRP22, W303 background</i>	This study
SNY674	<i>MATa, pup2-L101P, lcl-K2E, rpc31-G10A, pRP42, W303 background</i>	This study
SNY843	<i>MATa, pup2-L101P, lcl-K2E, rpc31-G10A, pDN431, W303 background</i>	This study
SNY1319	<i>MATa, pup2-L101P, lcl-K2E, rpc31-G10A, pDN1002, W303 background</i>	This study
SNY1320	<i>MATa, pup2-L101P, lcl-K2E, rpc31-G10A, pSM1083, W303 background</i>	This study
SNY1250	<i>MATa, pup2-L101P, lcl-K2E, rpc31-G10A, pRP22, pRS314, W303 background</i>	This study
SNY1251	<i>MATa, pup2-L101P, lcl-K2E, rpc31-G10A, pRP22, pSN87, W303 background</i>	This study
SNY1045	<i>MATa, Δdox4::KANMX, W303 background</i>	This study
SNY1260	<i>MATa, Δdox4::KANMX, pRP37, W303 background</i>	This study
SNY1078	<i>MATa, Δdox4::KANMX, pRP37, pSN59, W303 background</i>	This study
SNY1058	<i>MATa, Δdox4::KANMX, pRP22, W303 background</i>	This study
SNY1059	<i>MATa, Δdox4::KANMX, pRP42, W303 background</i>	This study
SNY1063	<i>MATa, Δdox4::KANMX, pDN431, W303 background</i>	This study
SNY1064	<i>MATa, Δdox4::KANMX, pDN1002, W303 background</i>	This study

SNY1129	<i>MATa, Δdoa4::KANMX, pSM1083, W303 background</i>	This study
SNY1147	<i>MATa, Δdoa4::KANMX, pRP22, pRS314, W303 background</i>	This study
SNY1148	<i>MATa, Δdoa4::KANMX, pRP22, pY109, W303 background</i>	This study
SNY1406	<i>MATa, Δdoa4::KANMX, pRP22, pSN59, W303 background</i>	This study
SNY1151	<i>MATa, Δdoa4::KANMX, pRP42, pRS314, W303 background</i>	This study
SNY1152	<i>MATa, Δdoa4::KANMX, pRP42, pY109, W303 background</i>	This study
SNY1263	<i>MATa, doa4-Q626*, tcb3-N1211L, prp38-C174Y, pRP37, pRS314, W303 background</i>	This study
SNY1264	<i>MATa, doa4-Q626*, tcb3-N1211L, prp38-C174Y, pRP37, pSN59, W303 background</i>	This study
SNY901	<i>MATa, doa4-Q626*, tcb3-N1211L, prp38-C174Y, pRP22, W303 background</i>	This study
SNY902	<i>MATa, doa4-Q626*, tcb3-N1211L, prp38-C174Y, pRP42, W303 background</i>	This study
SNY1265	<i>MATa, doa4-S329*, ino1-C19G, pRP37, pRS314, W303 background</i>	This study
SNY1266	<i>MATa, doa4-S329*, ino1-C19G, pRP37, pSN59, W303 background</i>	This study
SNY941	<i>MATa, doa4-S329*, ino1-C19G, pRP22, W303 background</i>	This study
SNY942	<i>MATa, doa4-S329*, ino1-C19G, pRP42, W303 background</i>	This study
SMUra#38	<i>MATa, ubr1-A580S, pRP37, W303 background</i>	This study
SMUra#114	<i>MATa, Spontaneous mutant #1, pRP37, W303 background</i>	This study
SMUra#125	<i>MATa, Spontaneous mutant #2, pRP37, W303 background</i>	This study
SMUra#22	<i>MATa, Spontaneous mutant #3, pRP37, W303 background</i>	This study
SMUra#54	<i>MATa, Spontaneous mutant #4, pRP37, W303 background</i>	This study
SNY638	<i>MATa, rpt5-E282D, chm7-I238M, pRP37, pRP22, W303 background</i>	This study
SNY640	<i>MATa, rpt5-E282D, chm7-I238M, pRP37, pRP42, W303 background</i>	This study
SNY545	<i>MATa, rvb2-M175R, pre7-Y24S, tos1-E121G, pRP22, W303 background</i>	This study
SNY563	<i>MATa, rvb2-M175R, pre7-Y24S, tos1-E121G, pRP42, W303 background</i>	This study
SNY634	<i>MATa, rpt3-V209D, pRP22, W303 background</i>	This study
SNY636	<i>MATa, rpt3-V209D, pRP42, W303 background</i>	This study

TABLE S1: YEAST STRAINS USED IN THIS STUDY.

TABLE S2

Plasmid	Encoded protein	Promoter	Vector	Source
pRP37	Ste6*C-HA-Ura3	<i>PRC1</i>	pRS313	This study
pRP22	Ste6*C-HA	<i>TDH3</i>	pRS313	Prasad et al., 2012
pRP42	Δ ssPrA-HA	<i>TDH3</i>	pRS313	Prasad et al., 2010
pDN431	CPY*-HA	<i>PRC1</i>	Ycp50	Ng et al., 2000
pDN1002	Sec61-2-HA	<i>SEC61</i>	pRS315	Vashist et al., 2001
pSM1083	Ste6*-HA	<i>STE6</i>	<i>CEN URA3</i>	Loayza et al., 1998
pSN87	Pup2	<i>PUP2</i>	pRS314	This study
pSN59	Doa4	<i>DOA4</i>	pRS314	This study
pY109	Ub	<i>TDH3</i>	pRS314	Davis Ng Lab Collection

TABLE S2: PLASMIDS USED IN THIS STUDY.**TABLE S3**

Primer	Plasmid	Sequence (5' → 3')
RP205	pRP37	GTCAGGATCCATGATACCCGATATAAGTAGAGGC
RP52	pRP37	GCGCCCGGGAGCGTAATCTGGAACATCATATGGGTA
SN427	pSN87	GATAAGCGGCCGCGTAGGTGAGAAAGTTTCTTGTTGGTC G
SN428	pSN87	GATGCGTCGACCGATTGATCCAATGACTATTCCTGGC
SN295	pSN59	GATAAGCGGCCGCCACTCCAAGACAATTGATGCGTAAATCG
SN296	pSN59	GATGCCTCGAGGATTTGCAACTGGACCCGTTTGAC

TABLE S3: OLIGONUCLEOTIDE PRIMERS USED IN THIS STUDY.

TABLE S4

Elimination method	Number of Spontaneous mutants
False positives	Total: 61
Transformation of known CytoQC genes	UBR1: 41
	RPN11: 1
	UMP1: 1
	Total number identified: 43
Whole genome sequencing method	Number of Spontaneous mutants
Unidentified true positives	Total: 13 <ul style="list-style-type: none"> • Temperature sensitive: 4 • Non-temperature sensitive: 9 Identified: 6 <ul style="list-style-type: none"> • PUP2: 1 • DOA4: 2 • RPT3: 1 • RPT5: 1 • PRE7: 1

TABLE S4: TABULATION OF SPONTANEOUS MUTANT SELECTION ISOLATES

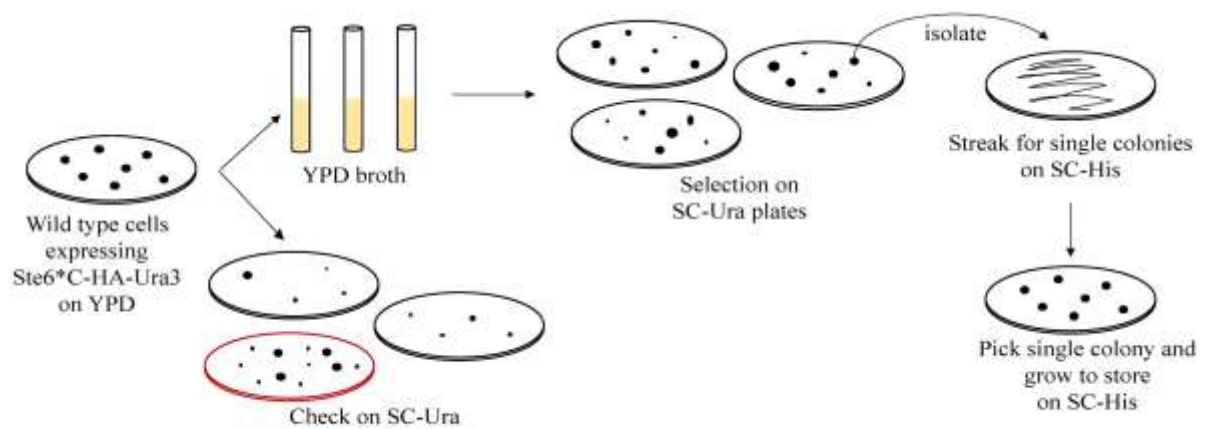


Figure S1: Schematic diagram of the genome-wide selection based on spontaneous mutations. Selection is based on the observation of the CytoQC-defective phenotype displayed by colonies that grow on the synthetic complete (SC) selection plates lacking uracil (SC-Ura). Colonies growing on SC-Ura are further isolated and streaked on SC-His and SC-Ura plates for confirmation.

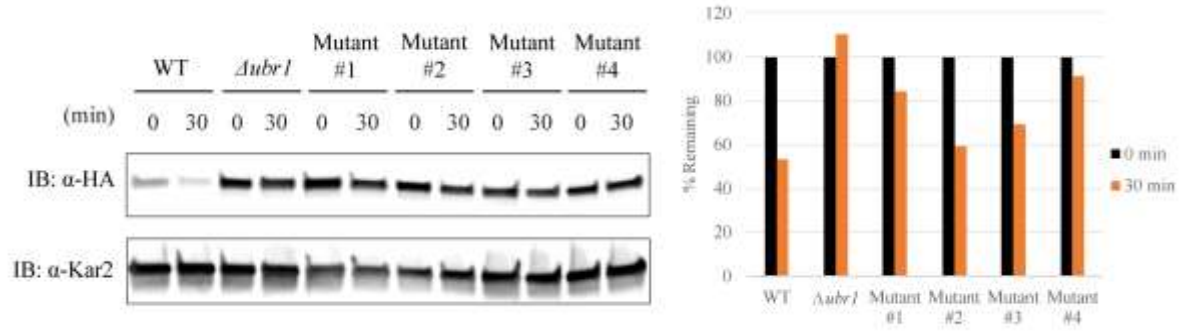


Figure S2: Stabilization of the reporter substrate in CytoQC-defective mutants. Cells were treated with 200μg/ml of cycloheximide and chased for the indicated timepoints. Lysates harvested were resolved on SDS-PAGE and analyzed by immunoblotting (IB) with anti-HA antibody. Kar2 was probed as loading control. Graph on the right shows the quantification of the substrate bands in the immunoblot. Intensity of substrate bands are normalized to the loading control of each sample.

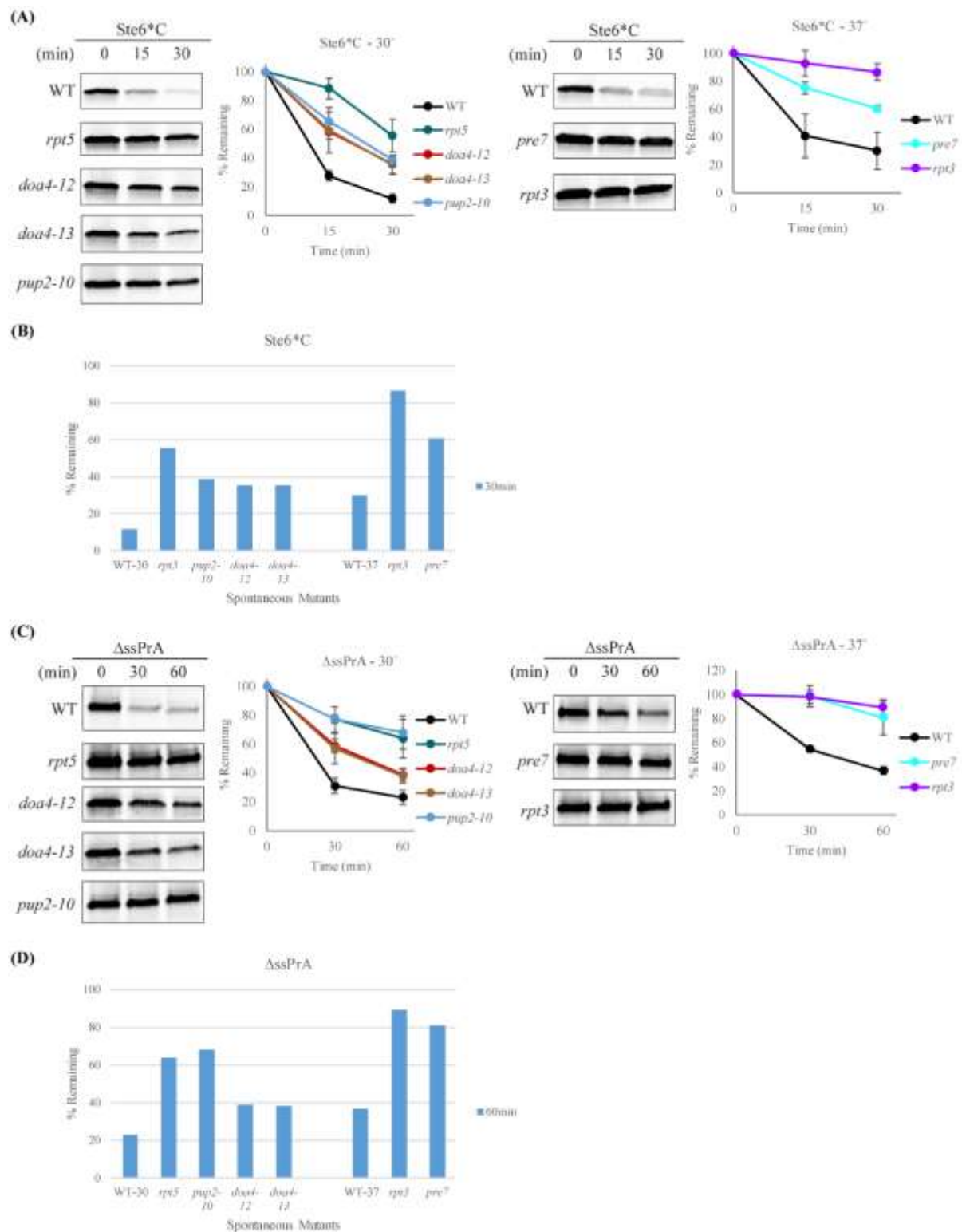


Figure S3: Degradation of CytoQC substrates is delayed in the CytoQC mutants. Selected spontaneous mutants from initial characterization assays were transformed with plasmid expressing CytoQC substrates Ste6*^C or ΔssPrA. (A and C) All the selected spontaneous mutants stabilize both CytoQC substrates albeit to varying degrees. Strains were pulsed with 35S-Met/Cys for 5min for Ste6*^C and 10min for ΔssPrA, followed by chase for the indicated time points. (B and D) Graph of the relative amount of CytoQC substrate remaining in each spontaneous

mutant at the last time point (30min for Ste6**C* and 60min for Δ ssPrA). WT-30 refers to WT strain pulse-chased at 30° and WT-37 refers to WT strain at 37°. Non-temperature sensitive mutants (left) were pulse-chased at 30° while temperature-sensitive mutants (right) were pulse-chased at 37°.

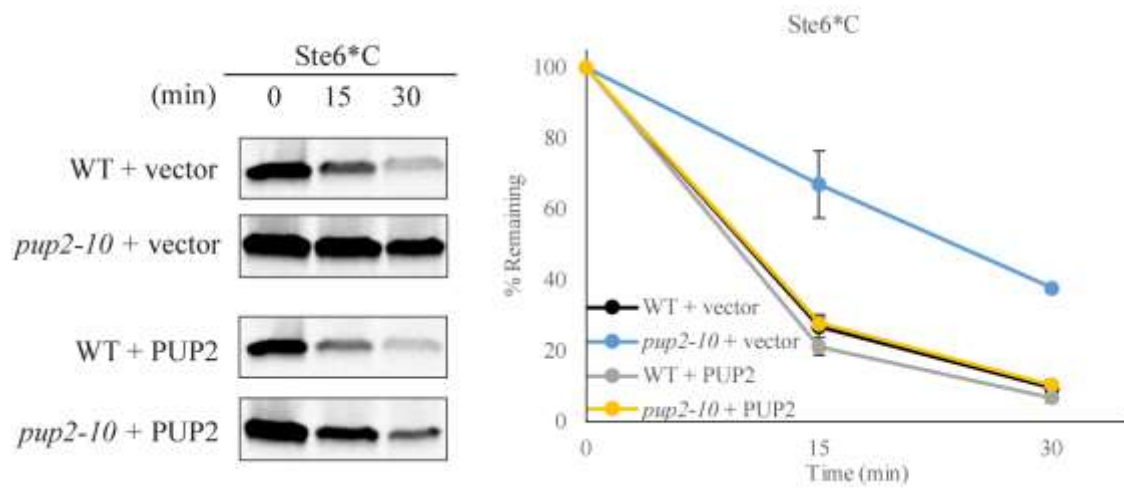


Figure S4: Rescue of the degradation delay of Ste6**C* in the *pup2-10* mutant. The empty vector (vector) or PUP2 was transformed into WT and *pup2-10* strains expressing CytoQC substrate Ste6**C*. Strains were pulsed with 35S-Met/Cys for 5min followed by chase for the indicated time points.

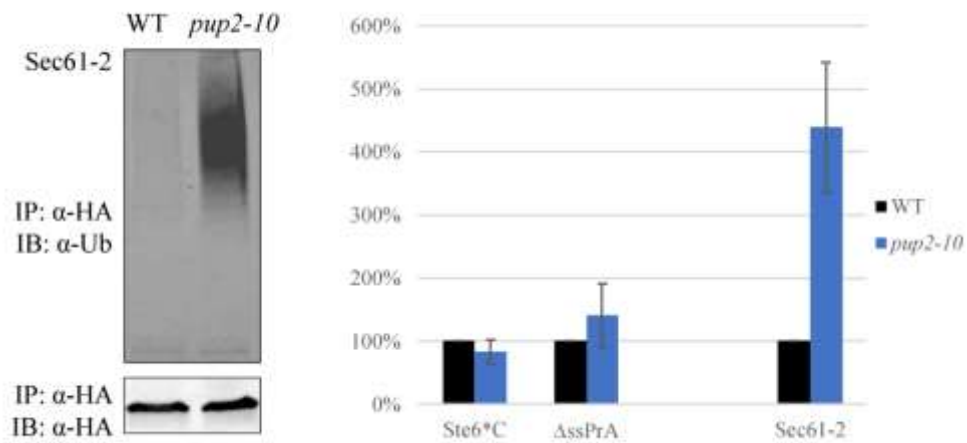


Figure S5: An accumulation of polyubiquitinated ERAD substrate Sec61-2 is observed in *pup2-10*. Quantification of polyubiquitinated CytoQC (from Figures 2F and 4F) and ERAD substrates in WT and *pup2-10*. Misfolded substrates expressed in WT and *pup2-10* were immunoprecipitated (IP) by anti-HA antibody, resolved by SDS-PAGE and analyzed by immunoblotting (IB) with anti-ubiquitin antibody to detect polyubiquitinated substrates.

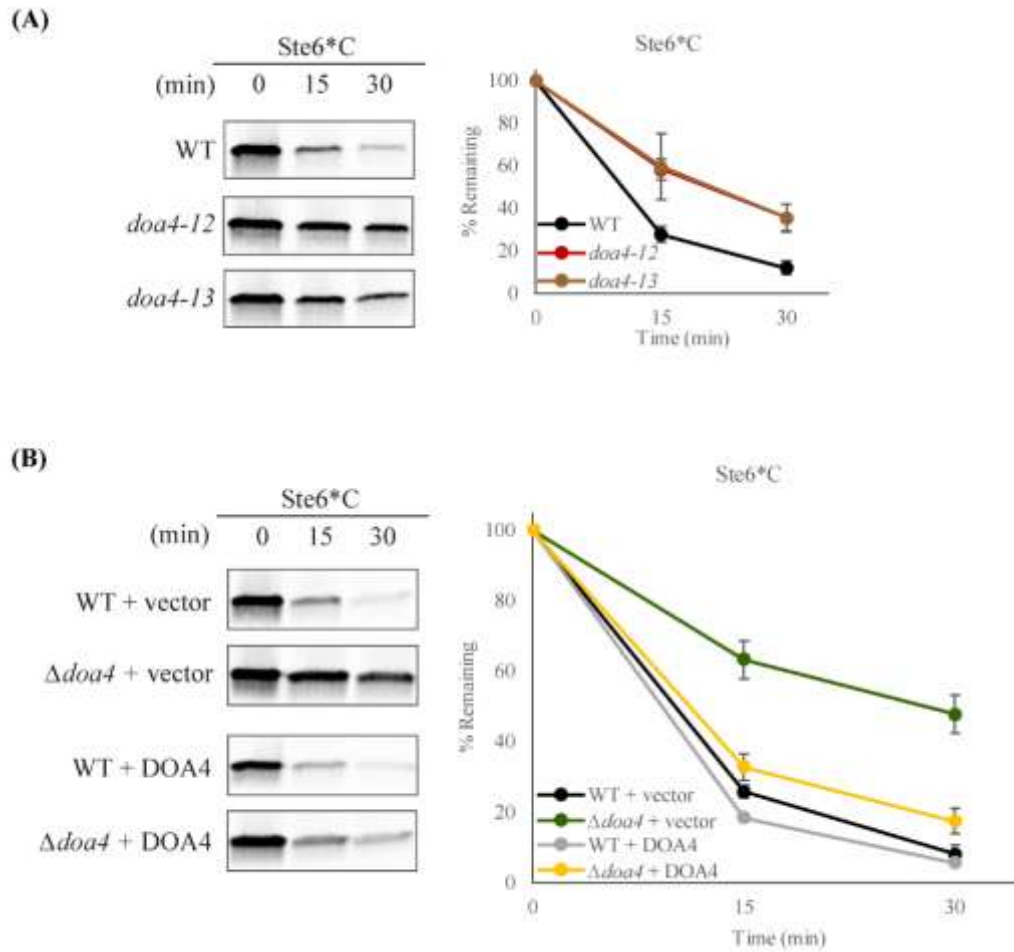


Figure S6: Degradation kinetics of Ste6**C* in *doa4* mutants. (A) Stabilization of CytoQC substrate Ste6**C* was observed in the *doa4* spontaneous mutants, *doa4-12* and *doa4-13*, compared to WT. (B) Rescue of degradation delay of Ste6**C* in Δ *doa4*. The empty vector (vector) or DOA4 was transformed into WT and Δ *doa4* strains expressing CytoQC substrate Ste6**C*. Strains were pulsed with 35S-Met/Cys for 5min followed by chase for the indicated time points.

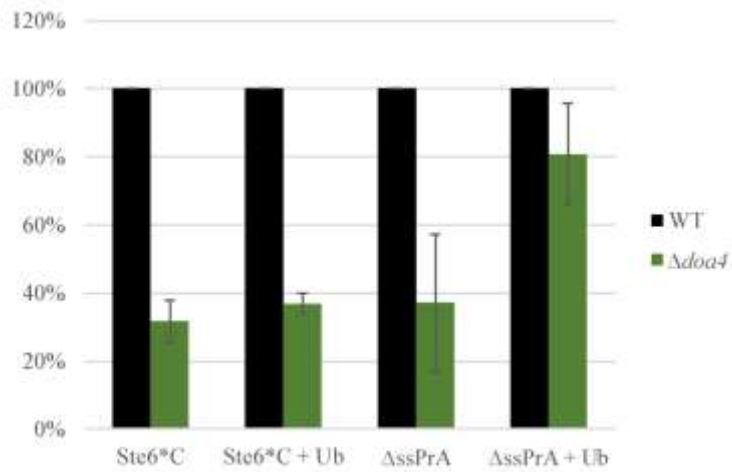


Figure S7: Quantification of polyubiquitinated CytoQC substrates in WT and Δ doa4 in the absence and presence of ubiquitin (Ub) overexpression from Figures 2F, 4F and 5B. Quantification by the Odyssey infrared imaging system and ImageJ.