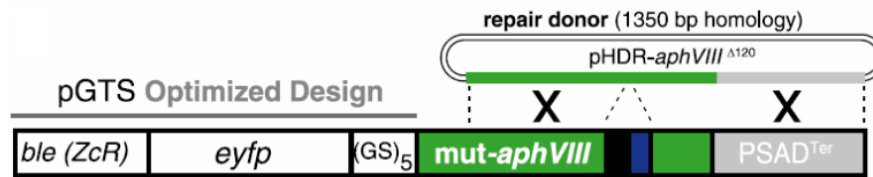


A



B

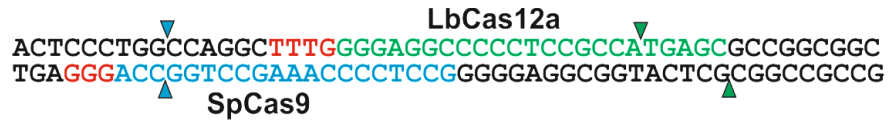


Figure S3 Schematic representation of the *mut-aphVIII* repair assay in the CC3403-D5 strain. (A) Figure 2A from the paper of Griener *et al.* (2017) presents schematic drawing of a transgenic construct containing the defective *mut-aphVIII* gene inactivated by the inserted 51 bp fragment. The position of the 51 bp fragment containing the CRISPR/Cas cleavage sites is shown in black/blue square. The *mut-aphVIII* gene can be repaired through homologous recombination with *pHDR-aphVIII^{Δ120}* plasmid containing the long homology region with the target. (B) The 51 bp fragment comprises protospacers for two gRNAs, *EMX1 mut-aphVIII SpCas9* gRNA (shown in blue) and *mut-aphVIII LbCas12a* gRNA (shown in green). PAMs are shown in red and cleavage sites are marked using triangles.