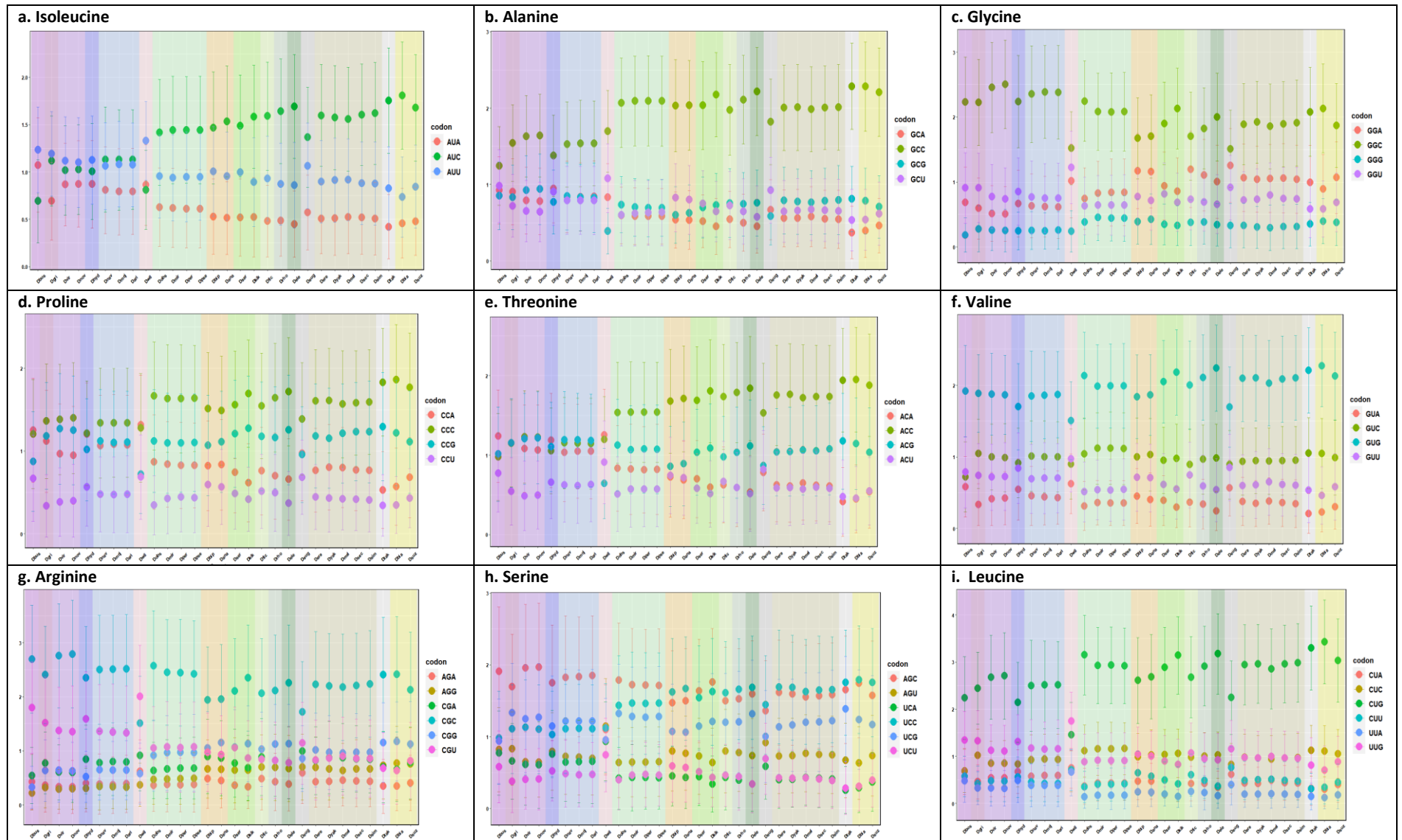
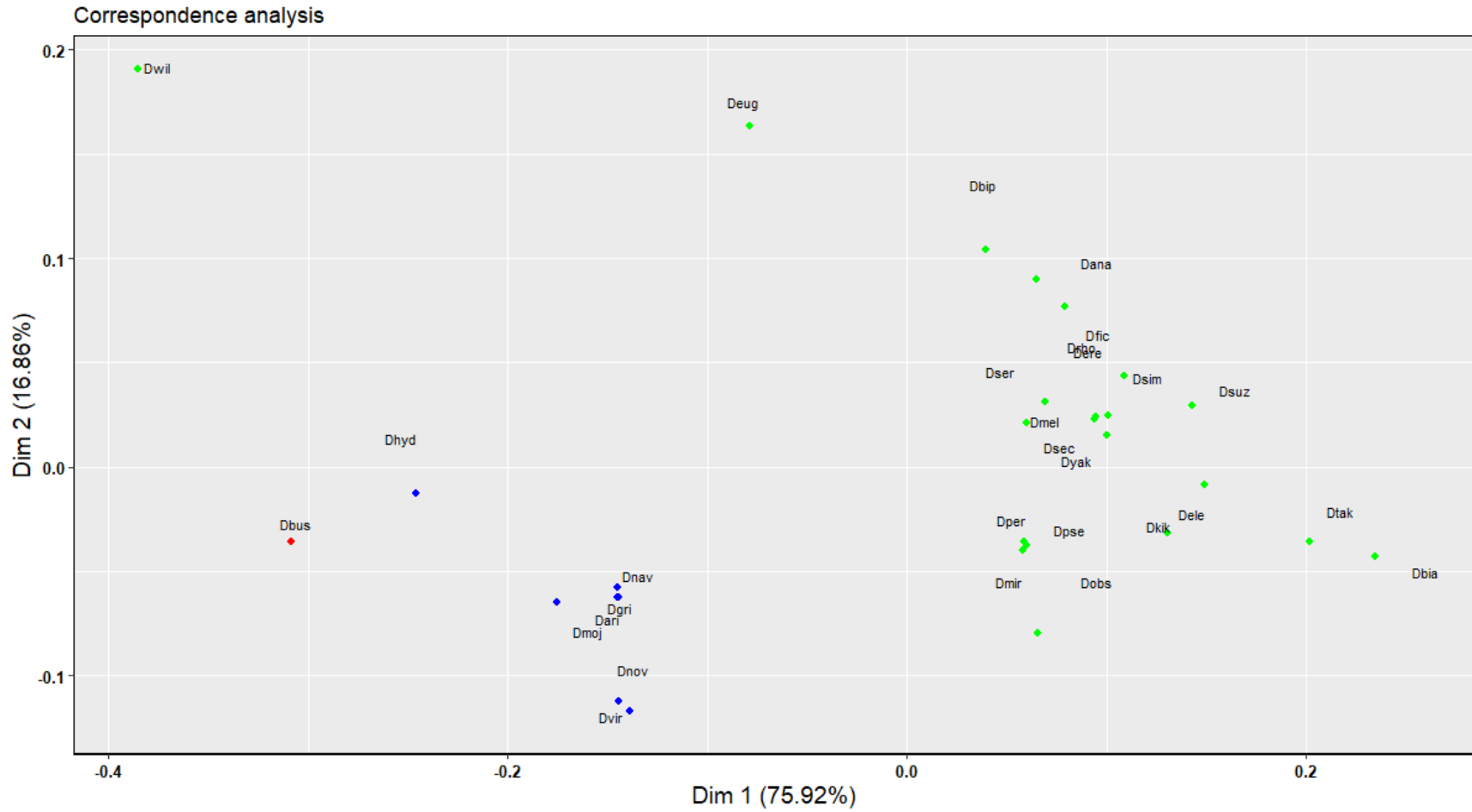


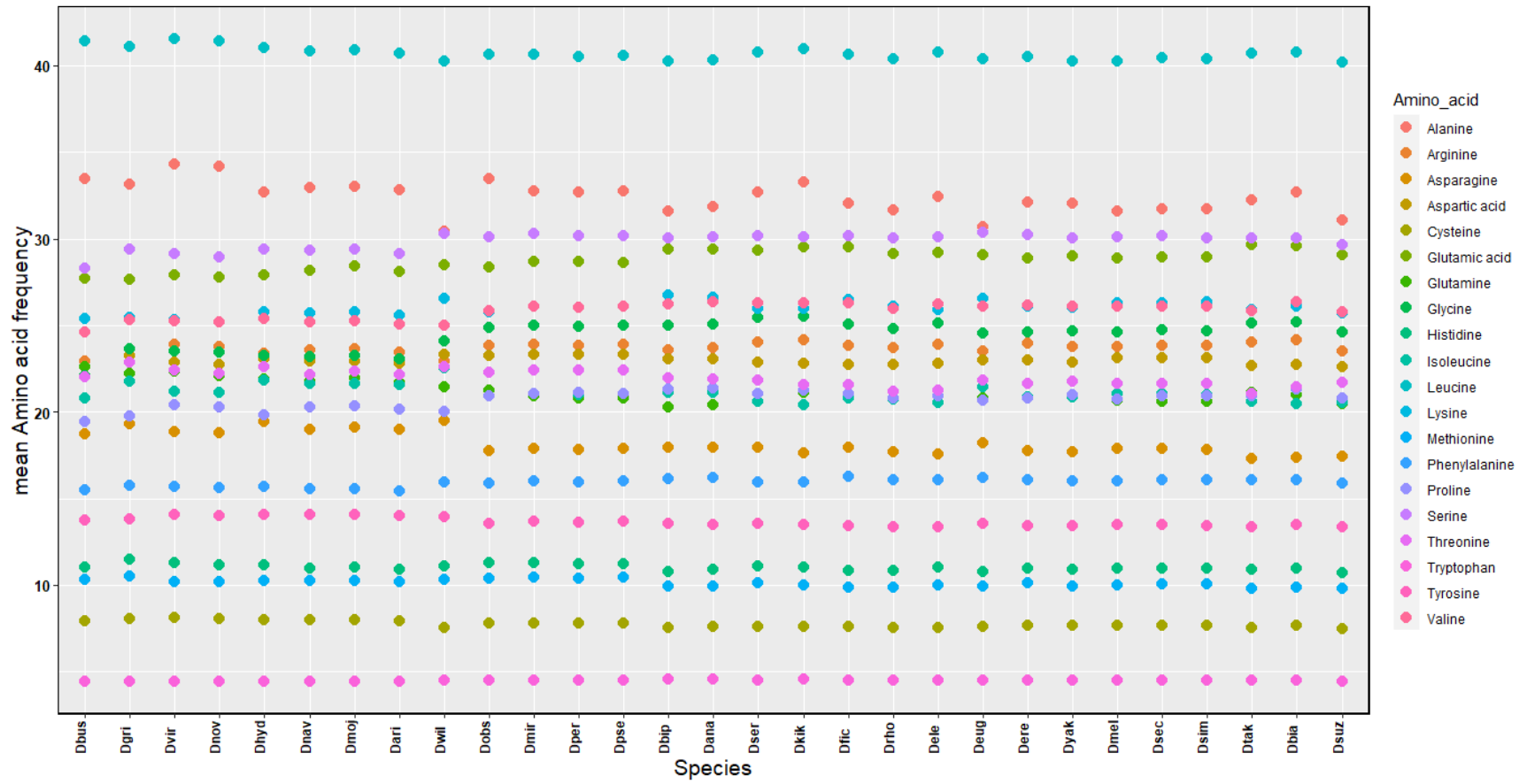
**Figure S1:** ENCGC3 plots of SCO genes from 25 *Drosophila* species.



**Figure S2:** Plots showing mean RSCU values of synonymous codons for 3-,4-, and 6-fold degenerate amino acids in SCO genes (y axis) from 29 *Drosophila* species (x axis). The background shading indicates species from the same species sub-group.



**Figure S3:** Correspondence Analysis of mean RSCU values. Blue and green dots represent species of the subgenus *Drosophila* and *Sophophora*, respectively. The single red dot represents *Drosophila busckii* from the subgenus *Dorsilopha*.



**Figure S4:** Comparison of the amino acid composition in SCO genes from 29 *Drosophila* species.