

Fig.S2

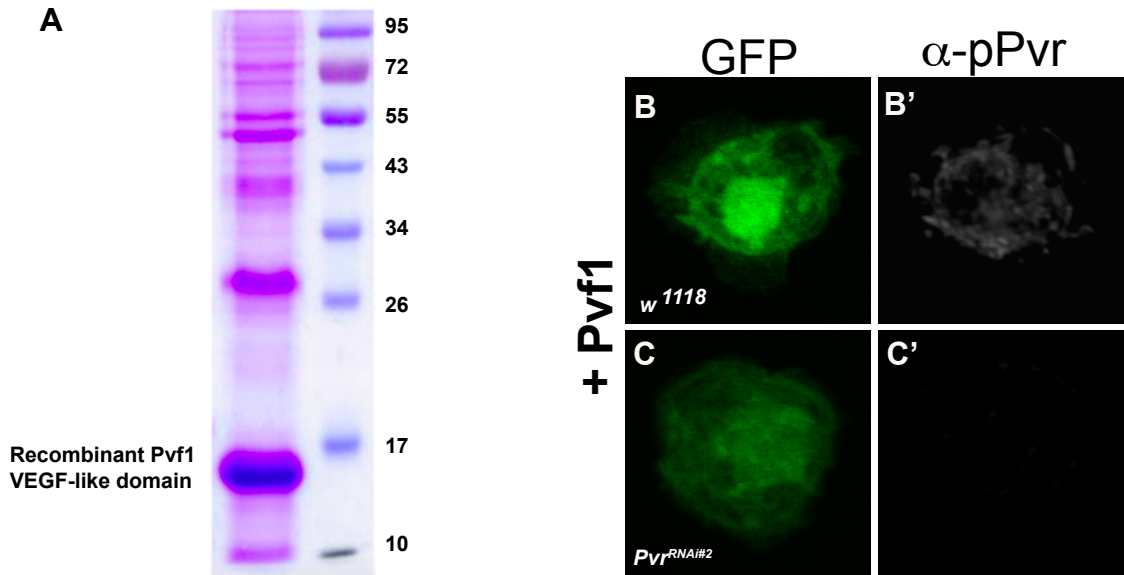


Figure S2. Verification of expression and activity of enriched Pvf1. (A) Enrichment of Pvf1 protein. Bacterial extract from cells overexpressing the Pvf1 VEGF-like domain (see methods). A large band at the expected MW of ~15 kD is observed. (B-C'). Hemocytes isolated from third instar larvae (genotype) +/- *UAS-Pvr^{RNAi#2}* were plated for one hour, treated with enriched Pvf1 protein, and visualized with the *UAS-GFP* lineage marker (green) (B-C) or immunostained with anti-phospho-Pvr (white) (B'-C'). Only control hemocytes lacking the *UAS-Pvr^{RNAi#2}* transgene show anti-phospho-Pvr staining upon addition of Pvf1.