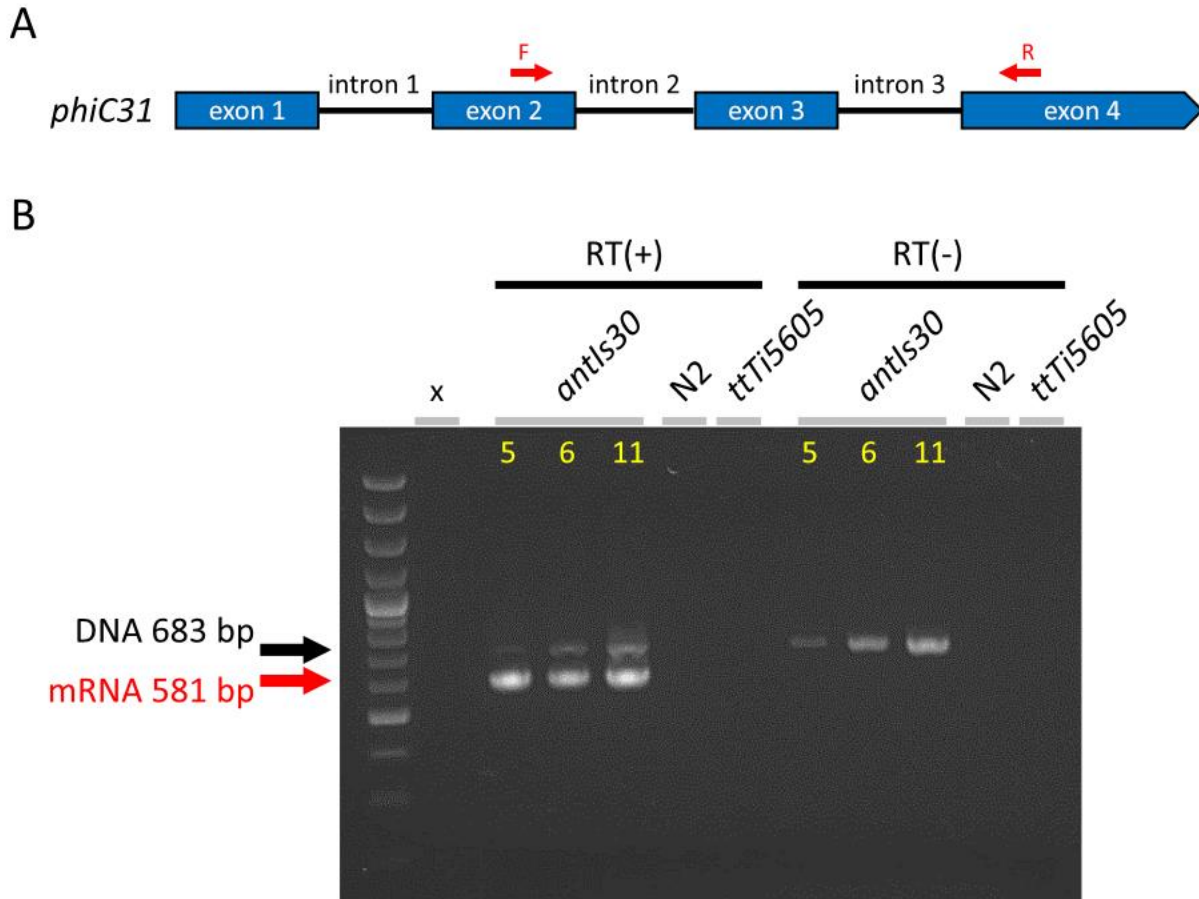


Supplementary Figure S4



Supplementary Figure S4. Confirmation that *phiC31* expressed from the *antIs30* transgene is spliced. (A) Schematic of *phiC31* containing 3 artificial introns that is in *antIs30*. PCR primers used in the reverse-transcription PCR assay (RT-PCR) are indicated in red; primer sequences are in **Supplementary Table S3**. Drawing not to scale. (B) RT-PCR verification of the proper splicing out of *phiC31* introns 2 and 3. Intron 1 was not tested. Proper slicing will produce a 581 bp PCR product. No splicing or genomic DNA will produce a 683 bp product. RT(+) and RT(-) indicate the addition or not of reverse transcriptase enzyme in the RT-PCR assay. Three sibling lines (#5, 6, and 11) of *antIs30* were tested. Line #6 corresponds to BRC0546 in the main text. *ttTi5605* is the Mos1 insertion allele on LG 2 and its location is where *antIs30* was integrated by MosSCI. x, empty well.