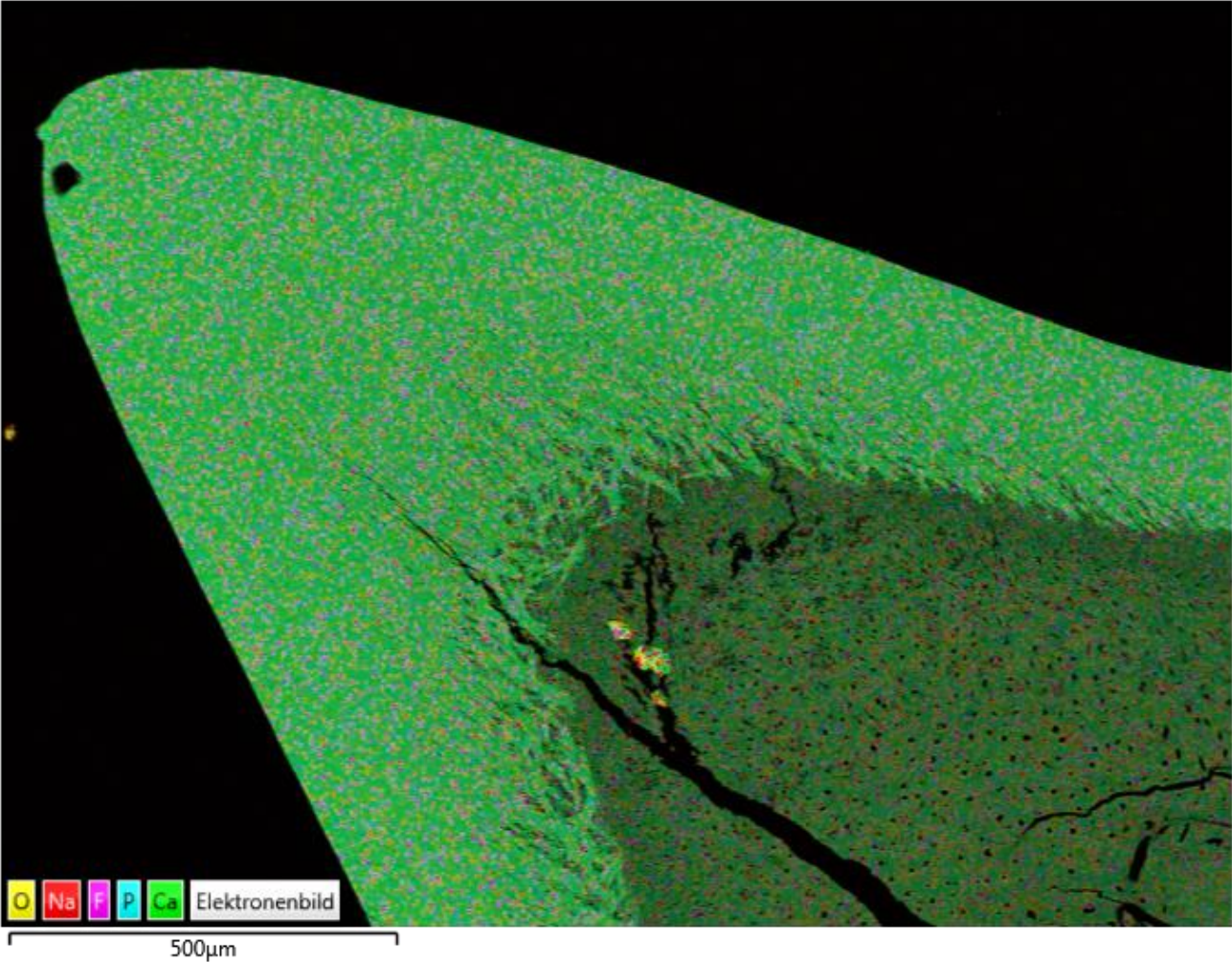


EDX maps

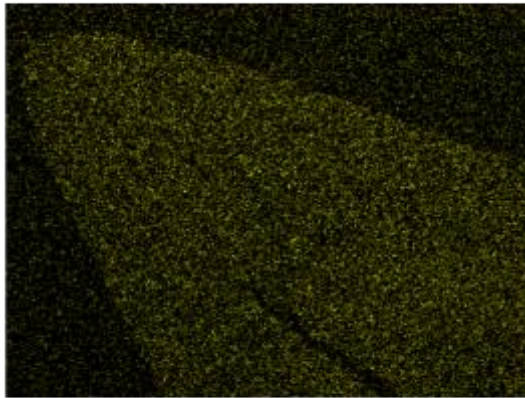
EDS-Überlagerungsbild 1



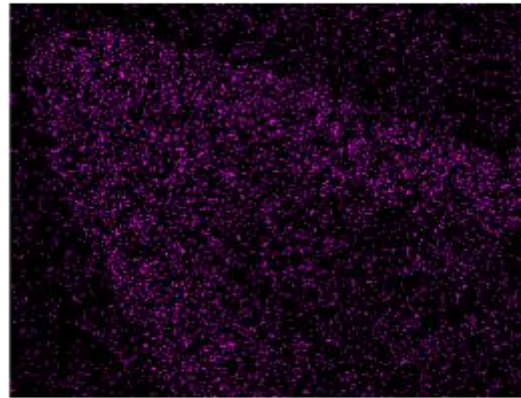
Combined EDX map data of *Hemipristis elongata*.

EDX maps

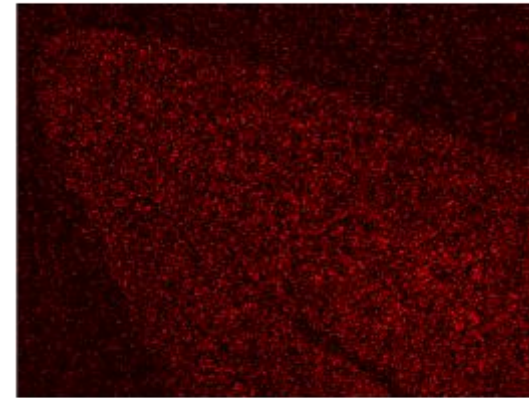
O K α 1



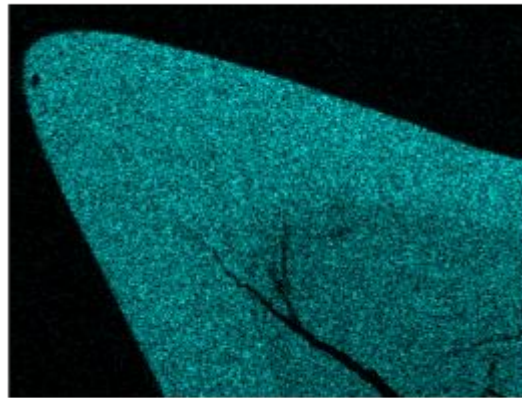
F K α 1_2



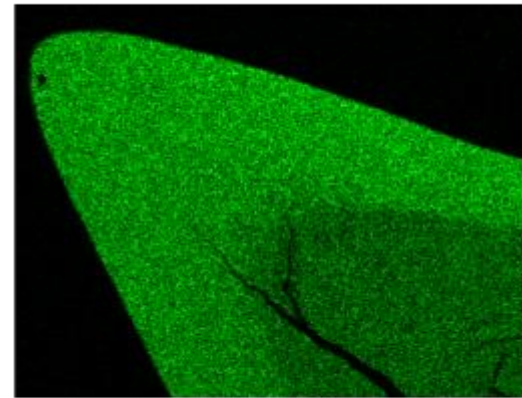
Na K α 1_2



P K α 1

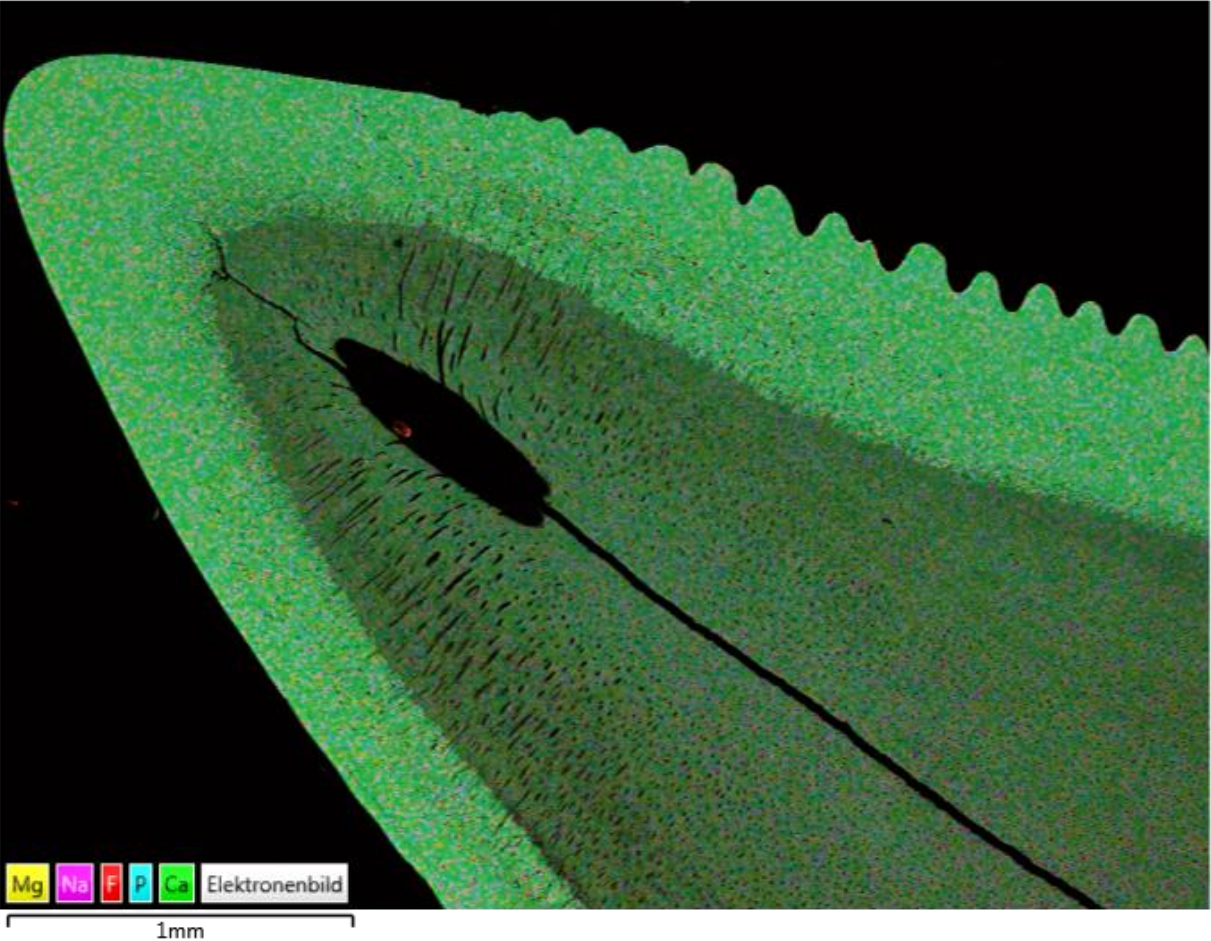


Ca K α 1



EDX maps

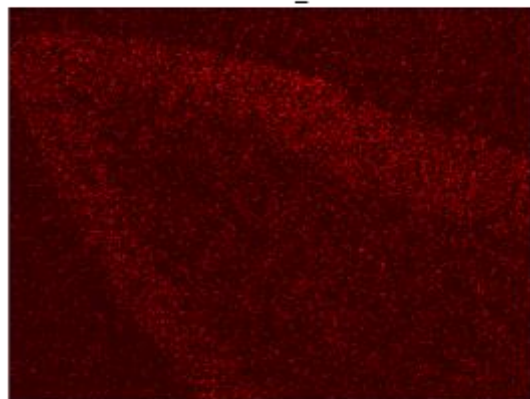
EDS-Überlagerungsbild 2



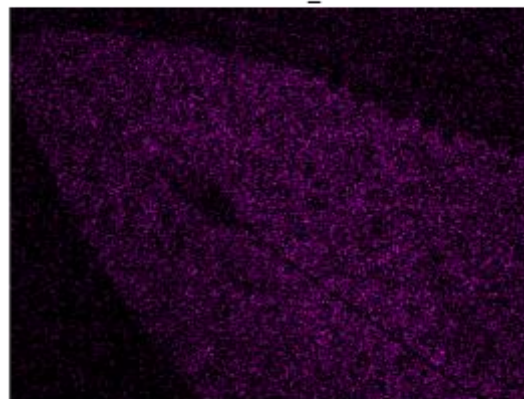
Combined EDX map data of *Lamiopsis temminckii*.

EDX maps

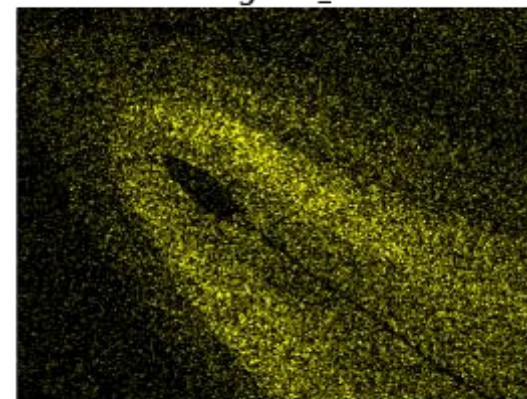
F K α 1_2



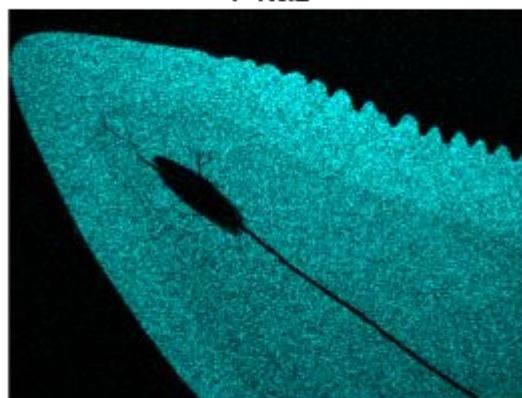
Na K α 1_2



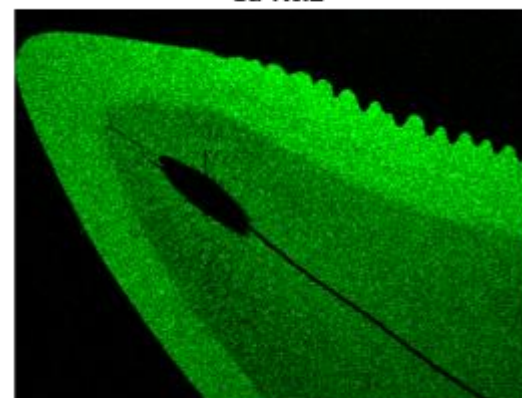
Mg K α 1_2



P K α 1

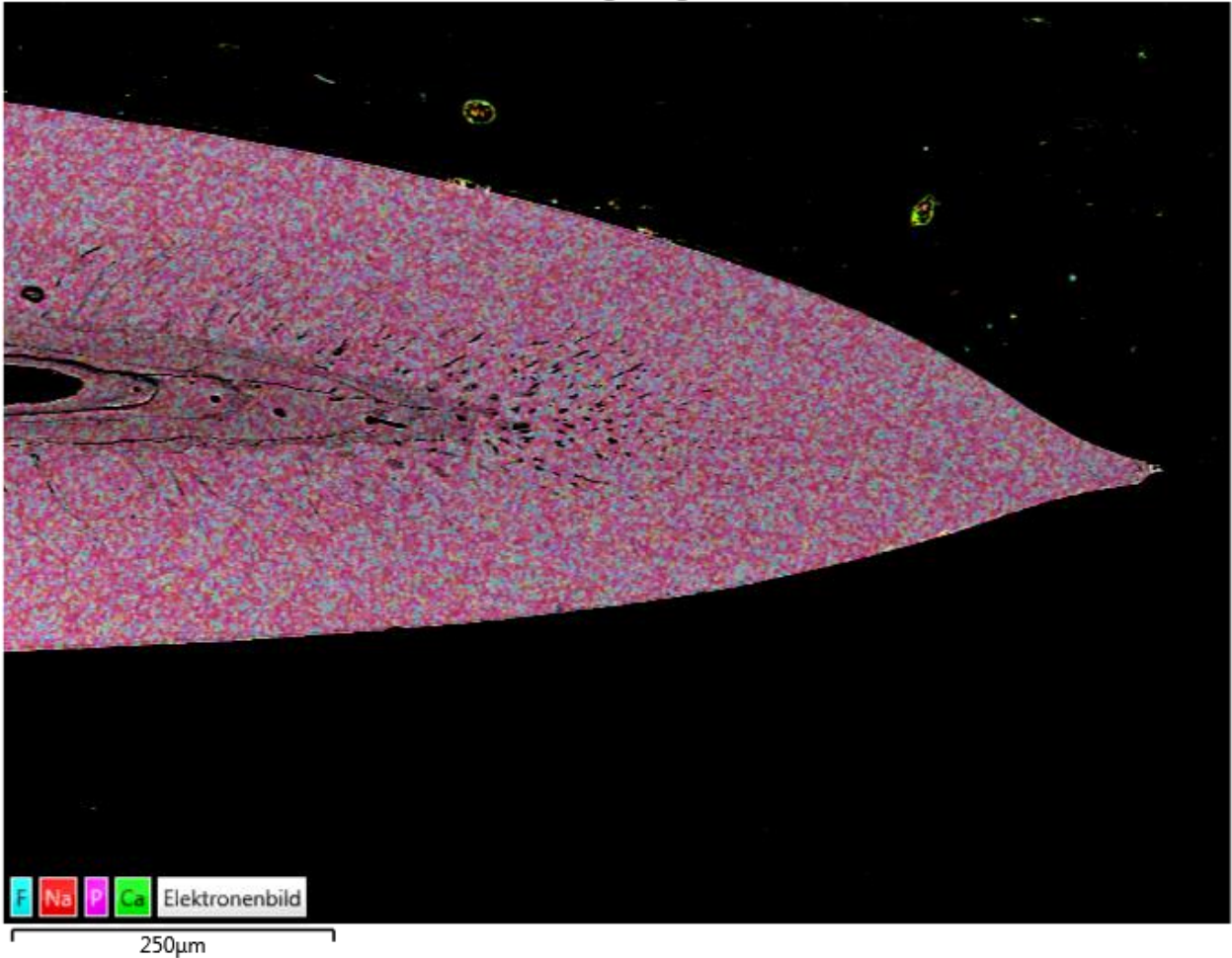


Ca K α 1



EDX maps

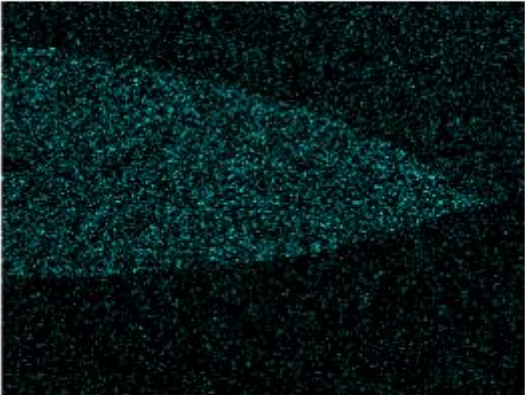
EDS-Überlagerungsbild 3



Combined EDX map data of *Sphenodus nitidus* (SNA).

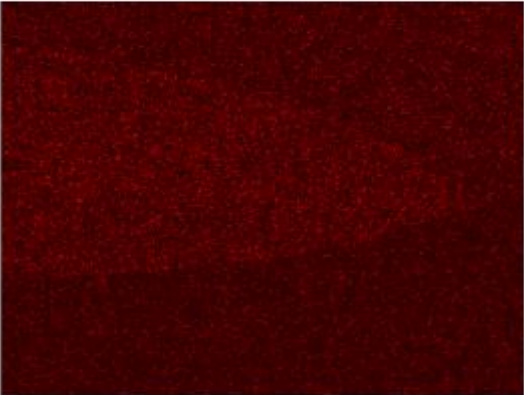
EDX maps

F K α 1_2



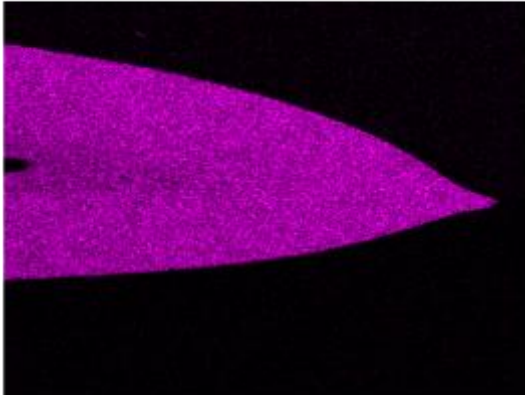
250 μ m

Na K α 1_2



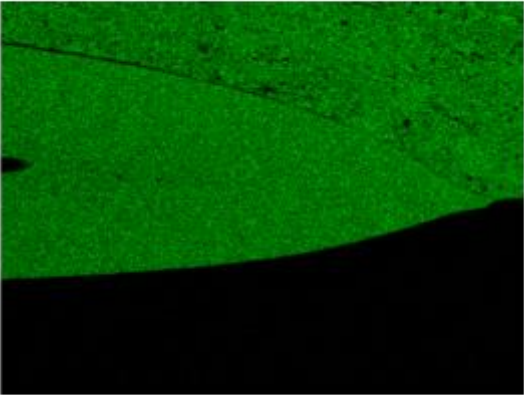
250 μ m

P K α 1



250 μ m

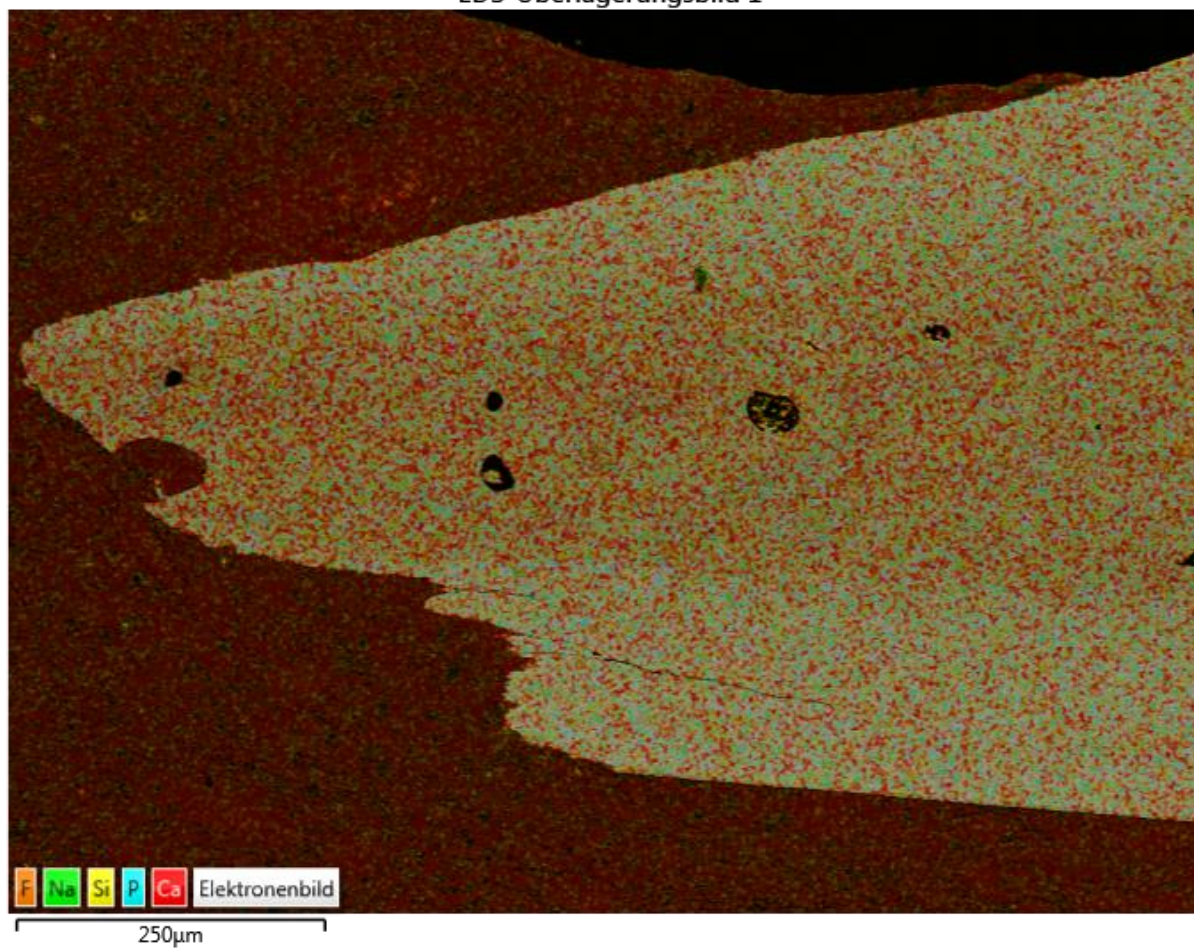
Ca K α 1



250 μ m

EDX maps

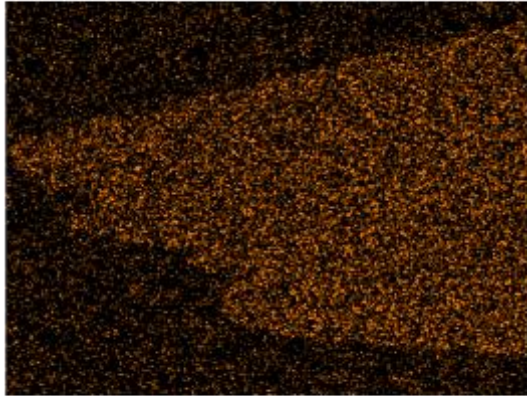
EDS-Überlagerungsbild 1



Combined EDX map data of *S. nitidus* (SNB).

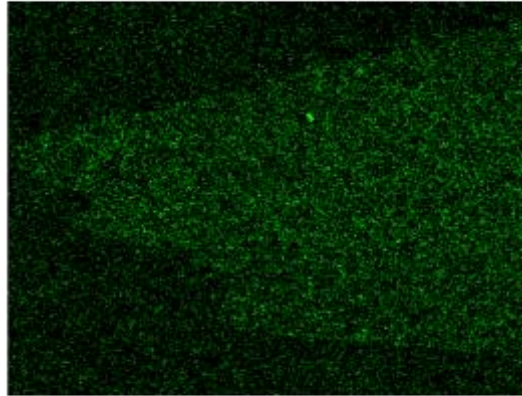
EDX maps

F K α 1_2



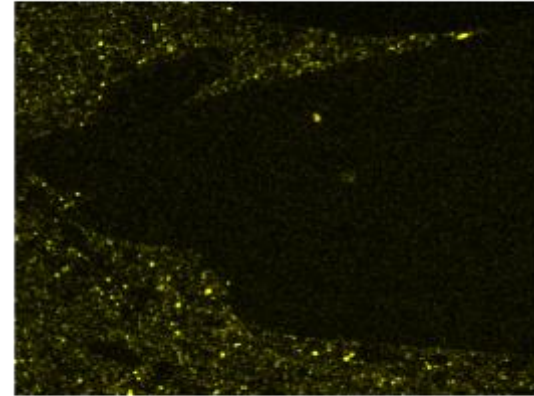
250 μ m

Na K α 1_2



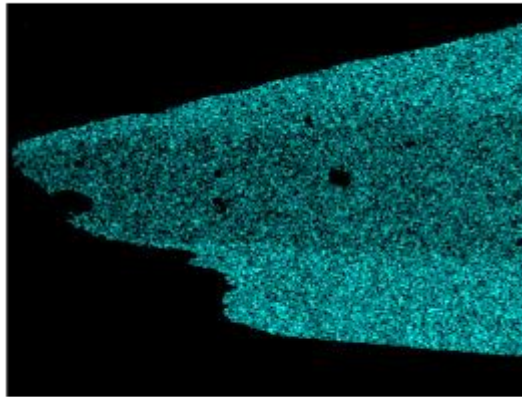
250 μ m

Si K α 1



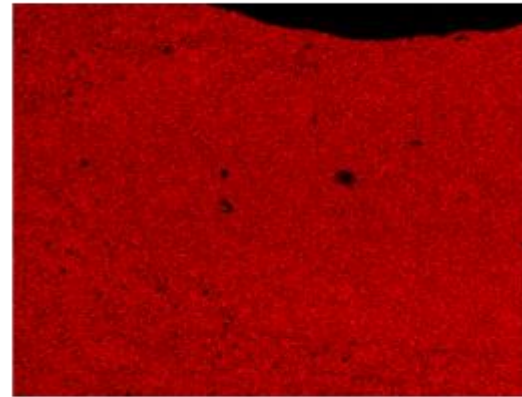
250 μ m

P K α 1



250 μ m

Ca K α 1



250 μ m