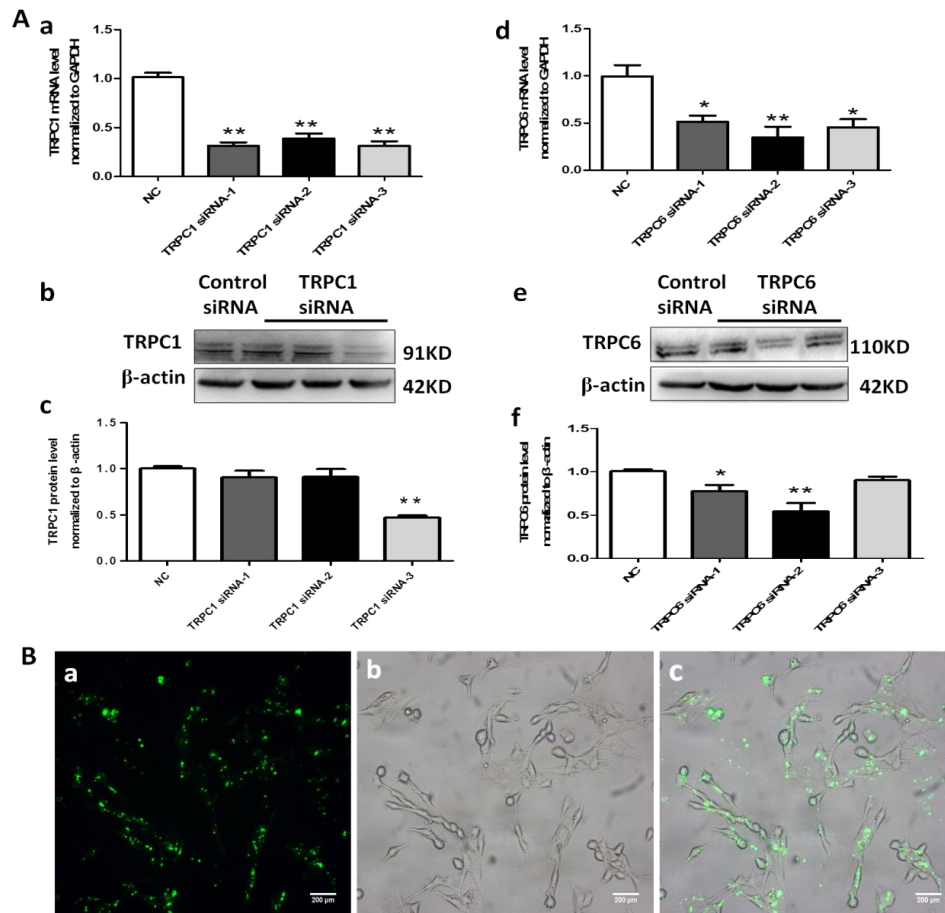


### Supplementary Figure legends

**Supplementary Fig. 1.** Silencing TRPC1 and 6 expressions by RNA interference. HBZY-1 cell was seeded into 6-well plate and the specific siRNA sequences were cotransfected into the cells after 30-50% confluence utilizing lipofectamine 2000. Cells were harvested at 6 h for analyzing the transfected efficiency by calculating positive staining cells of FAM in control. And transfected cells were harvested at 24 h for detecting mRNA levels of TRPC1 and 6 by qRT-PCR and 48 h for measuring protein expressions of TRPC1 and 6 by western blotting. Each test was performed at least three times. Values represent means  $\pm$  SD. Three siRNA sequences of TRPC1 and 6 were used for examining mRNA (A-a and d) levels by qRT-PCR and protein (A-b, c and e, f) expressions of TRPC1 and 6 by western blotting. (B) Transfected efficiency was measured by calculating positive staining cells of FAM in control. Original magnification $\times$ 200 (scale bar = 200  $\mu$ m). \* $P$  < 0.05 and \*\* $P$  < 0.01, TRPC1siRNA and TRPC6siRNA versus Control siRNA, the results indicate statistical significant.

**Supplementary Fig. 2.** Effects of RSG and GW9662 on proliferation of HBZY-1 cells. MTT, qRT-PCR and Western blot were utilized to select the treatment concentrations of RSG and GW9662 in HBZY-1. Each test was performed at least three times. Data were presented as mean $\pm$ SD. (A) MTT assay was used to examine the treatment concentrations of RSG and GW9662 in HBZY-1. (B) qRT-PCR and Western blotting were performed to measure the mRNA and protein levels of PCNA (one of the proliferation indicators) with different RSG and GW9662 treatments. (B-a and d) Different treatment concentrations of RSG and GW9662 on mRNA levels of PCNA, respectively. (B-b, c and e, f) Different concentrations of RSG and GW9662 on protein levels of PCNA. Each test was performed at least 3 times. \*\* $P$  < 0.01, when compared Ang II groups with NC groups. # $P$  < 0.05 and ## $P$  < 0.01, indicate Ang II + RSG 1, 5, 10, and 15 $\mu$ M groups versus Ang II groups and Ang II + GW9662 1, 5, 10, and 15 $\mu$ M groups versus Ang II groups. & $P$  < 0.05 and && $P$  < 0.01 indicate 0, 1, 5, 15  $\mu$ M versus 10 $\mu$ M in Ang II + RSG and Ang II + GW9662 groups, respectively.

**Supplementary Fig. 1.**



Supplementary Fig. 2.

