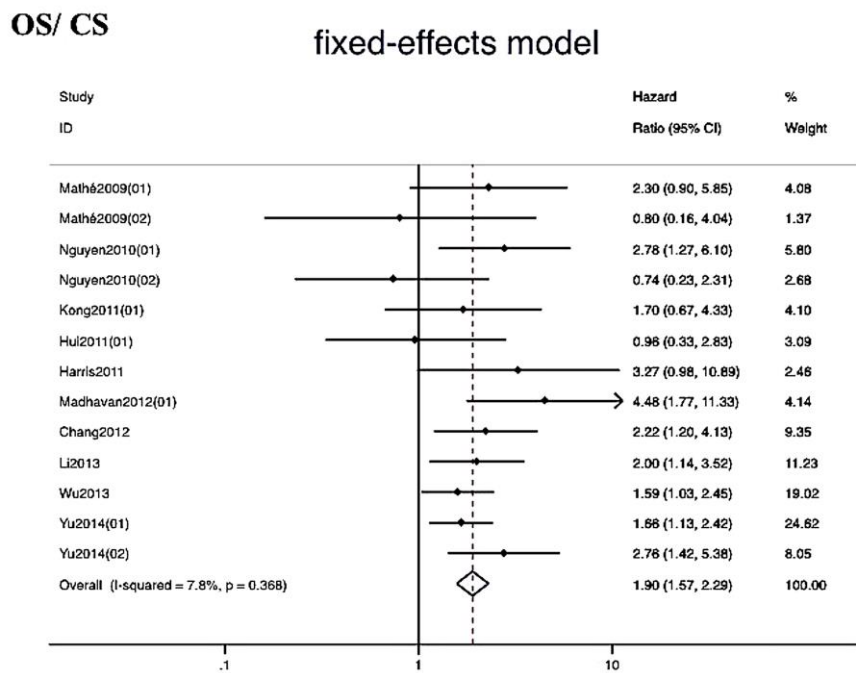


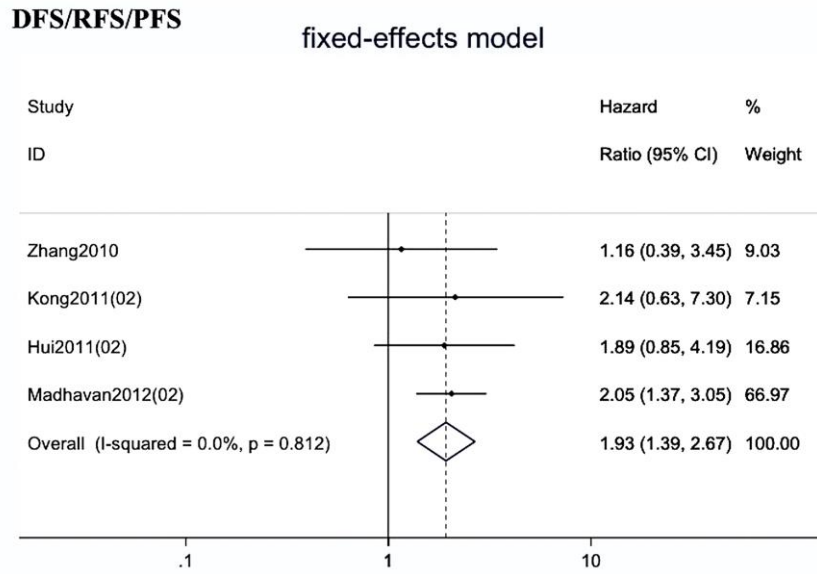
Prognostic Value of miR-375 for Survival Outcomes in Various Cancers: A Systematic Review and Meta-Analysis

Bing Dan Jie Luo Kaichun Li Shiyu Chen

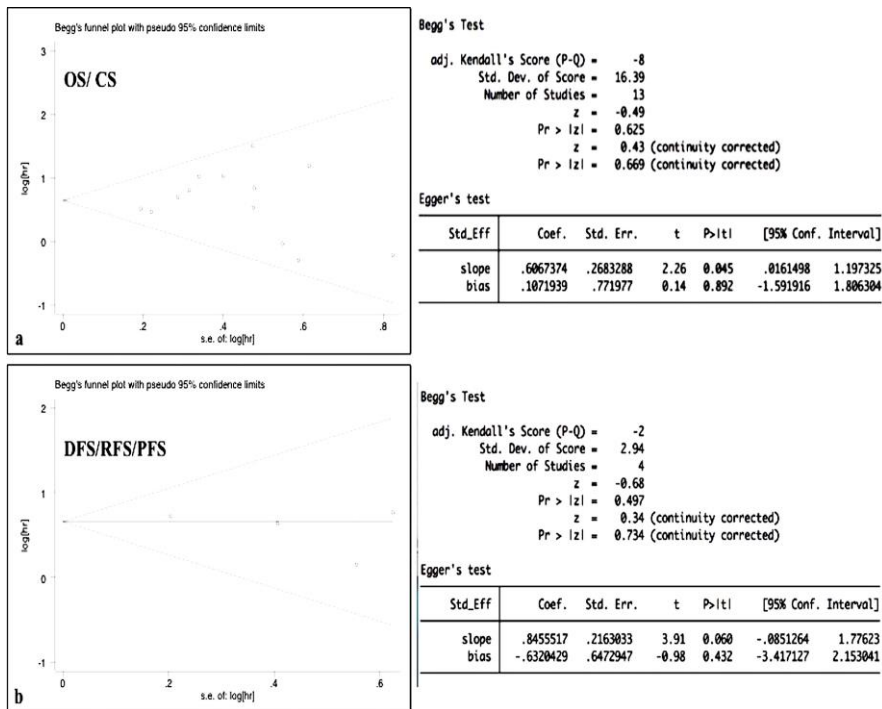
Tianyou Hospital affiliated to Tongji University, Shanghai, China



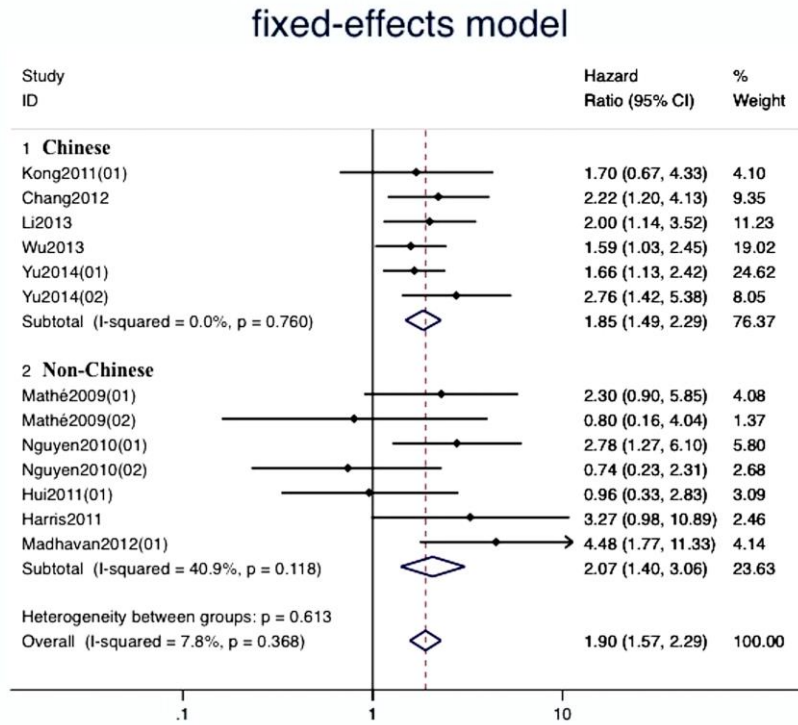
Supplemental Fig. 1. Forrest plots of studies evaluating hazard ratios (HRs) of low miR-375 expression group. Survival data were reported as overall survival (OS) or cumulative survival (CS). A fixed-effect model was adopted.



Supplemental Fig. 2. Forrest plots of studies evaluating HRs of low miR-375 expression group. Survival data were reported as disease-free survival (DFS), recurrence-free survival (RFS) or progression-free survival (PFS). A fixed-effect model was adopted.

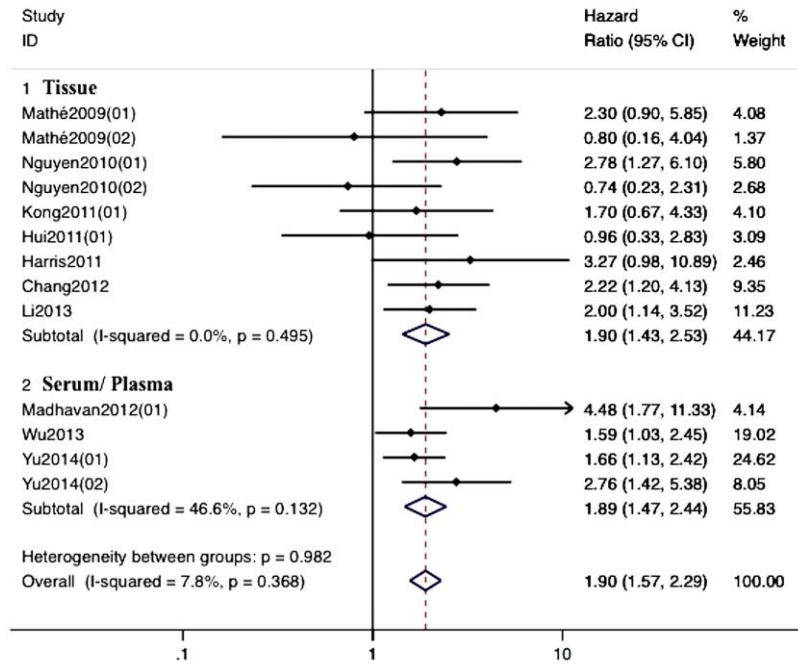


Supplemental Fig. 3. Funnel plots of studies included in: (a) the OS/CS group and (b) the DFS/RFS/PFS group.



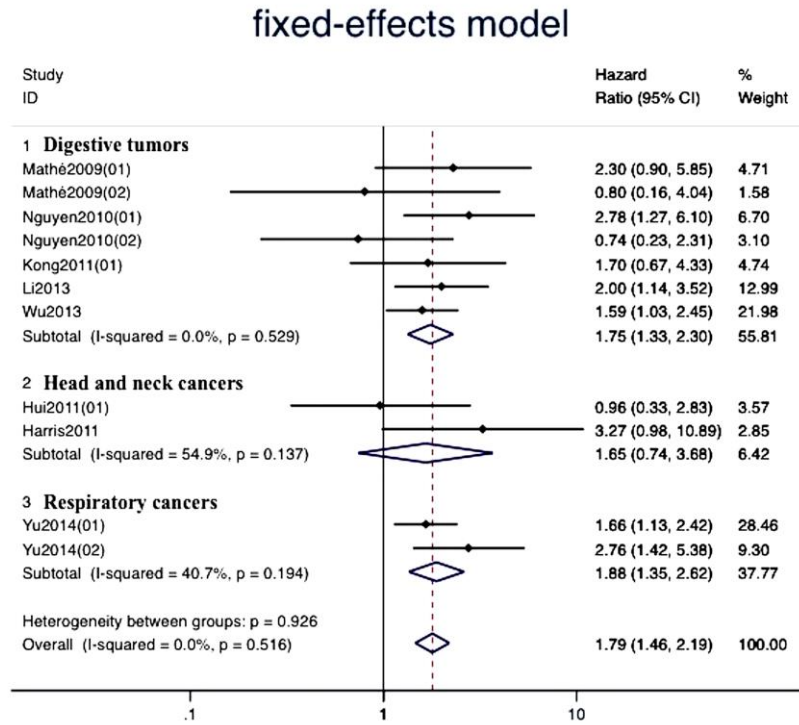
Supplemental Fig. 4. Subgroup analysis based on diverse populations. Forrest plots of studies evaluating HRs of the low miR-375 expression group.

fixed-effects model



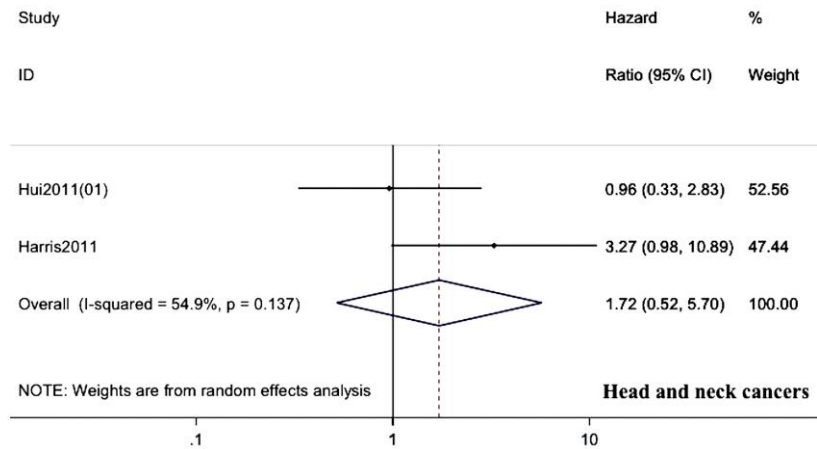
Supplemental Fig. 5. Subgroup analysis based on diverse samples resource.

Forrest plots of studies evaluating HRs of the low miR-375 expression group.



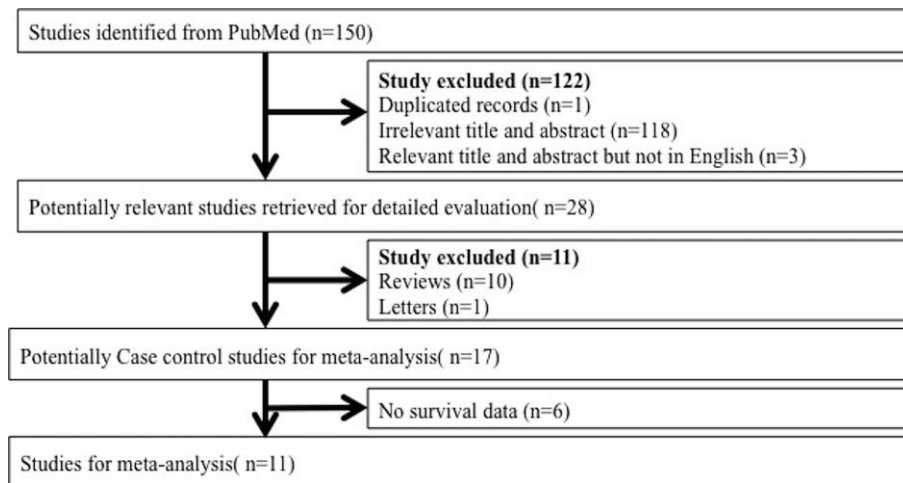
Supplemental Fig. 6. Subgroup analysis based on diverse cancer types. Forrest plots of studies evaluating HRs of the low miR-375 expression group.

random-effects model



Supplemental Fig. 7. Subgroup analysis based on diverse cancer types. Forrester plots of studies evaluating HRs of the low miR-375 expression group in head and neck cancers. Survival data were reported as OS or CS. A random-effect model was adopted.

Supplemental table 1. Summary of the retrieved publications for meta-analysis.



Supplemental table 2. Results of subgroup analysis based on diverse groupings.

			Homogeneity		
	Cases (low miR-375 expression/control)	Pooled HRs	95% CI	I ²	P value (Q statistic)
Population					
Chinese	848 (387/461)	1.85	1.49-2.99	<0.01%	0.760
Non-Chinese	568 (230/338)	2.07	1.40-3.06	40.9%	0.118
Sample resources					
Tissue	841 (405/436)	1.90	1.43-2.53	<0.01%	0.495
Serum/ Plasma	575 (212/363)	1.89	1.47-2.44	46.6%	0.132
Cancer Types					
Digestive tumors	692 (305/387)	1.75	1.33-2.30	<0.01%	0.529
Head and neck cancers	215 (97/118)	1.65	0.74-3.68	54.9%	0.137
Respiratory cancers	217 (108/109)	1.88	1.35-2.62	40.7%	0.194