

Supplemental data

Figure Legends:

Fig. 1 Supplement. Specificity of pendrin antibody by immunofluorescence microscopy. Left panel shows the expression of pendrin in a wild type mouse kidney. Right panel shows that the expression of pendrin is completely ablated in pendrin KO mouse kidney.

Fig. 2 Supplement. Expression of renin in kidneys of wild type and CF mice. Top panel: Northern hybridization. Bottom panel: Western blot analysis. Experiments were performed in 3 separate animals in each group.

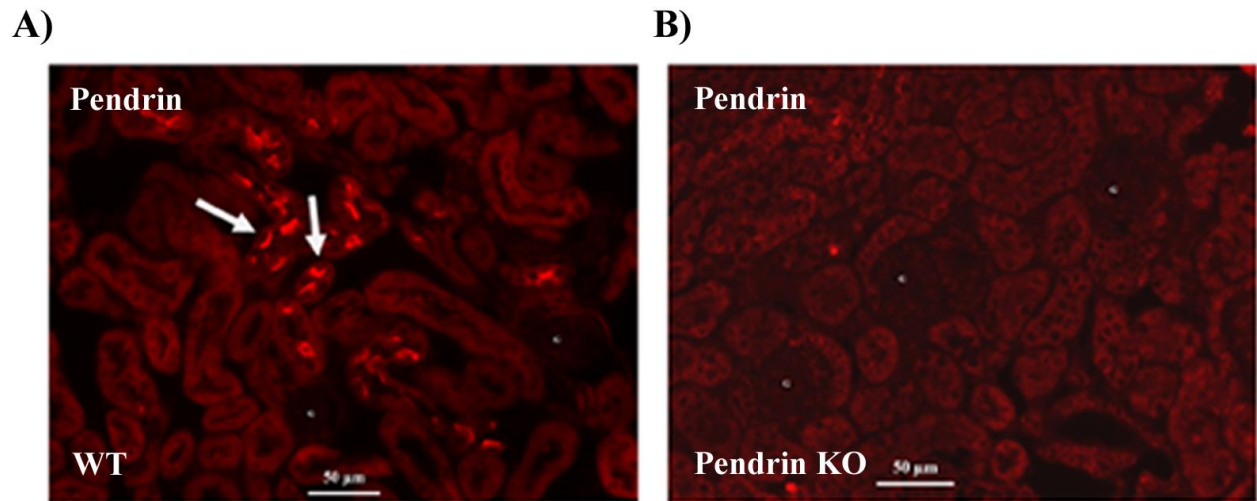
Fig. 3 Supplement. Semiquantitative Expression of AQP-2, S256-P-AQP-2 and S261-P-AQP-2 in kidneys of wild type and CF mice. Top panel: AQP-2; Middle panel: S256-P-AQP-2, Bottom panel: S61-P-AQP-2 Western blot analysis. Experiments were performed in 3 separate animals in each group.

Fig. 4 Supplement. Expression of mouse CFTR (mCFTR) (A) and human CFTR (hCFTR) (B) in kidneys of WT and CF mice. Experiments were performed in 3 separate animals in each group.

Fig. 5 Supplement. Expression of Insulin Receptor Related Receptor (IRR) in kidneys of WT, CFTR KO and pendrin KO mice. Expression of Insulin Receptor Related Receptor (IRR) was comparable in kidneys of WT and CF mice (Fig. 5S, top panel) and in WT and pendrin KO mice (Fig. 5S, bottom panel). Experiments were performed in 3 separate animals in each genotype.

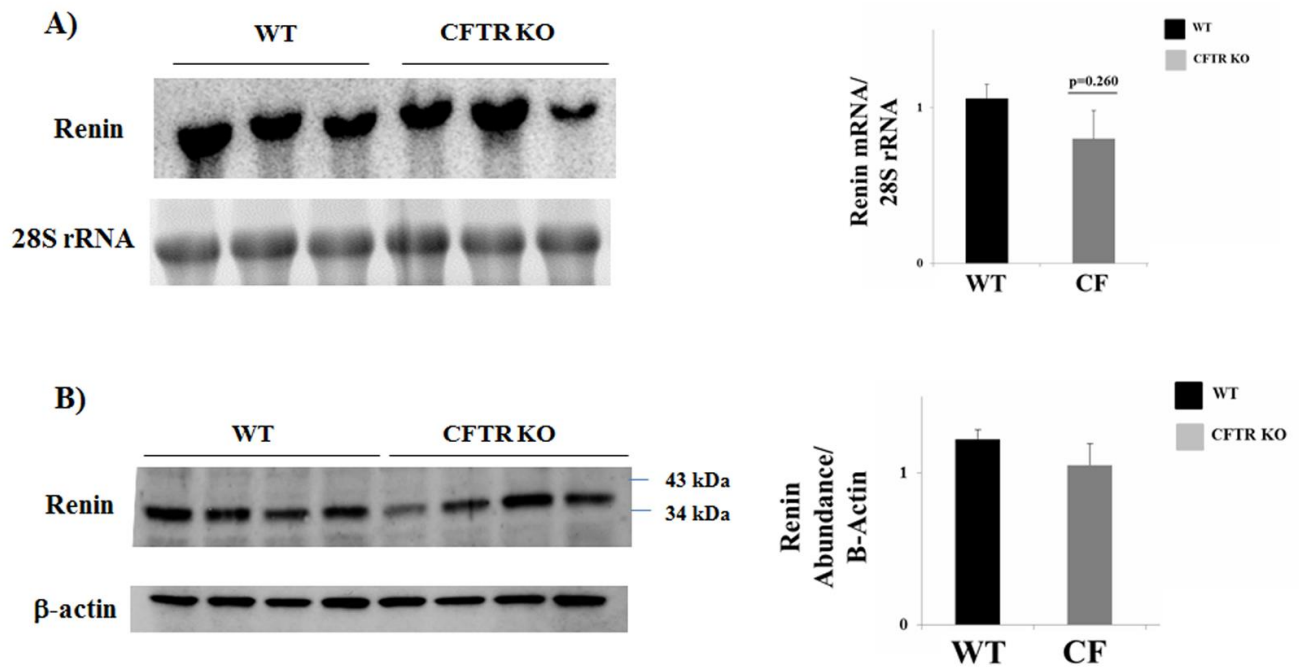
Supplemental data.

Fig. 1S. Specificity of Pendrin Antibody.



Supplemental data

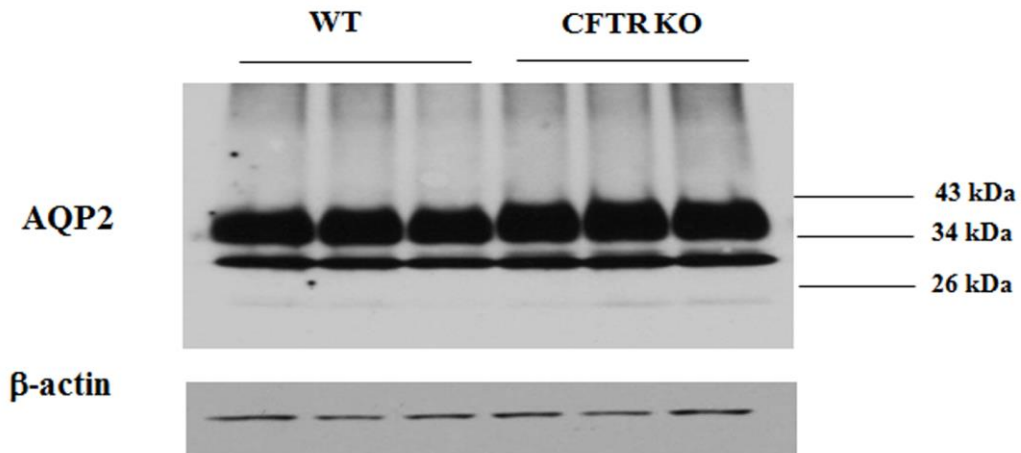
Fig 2S. Expression of renin in kidneys of WT and CF mice. A. Northern Hybridization. B. Western blot



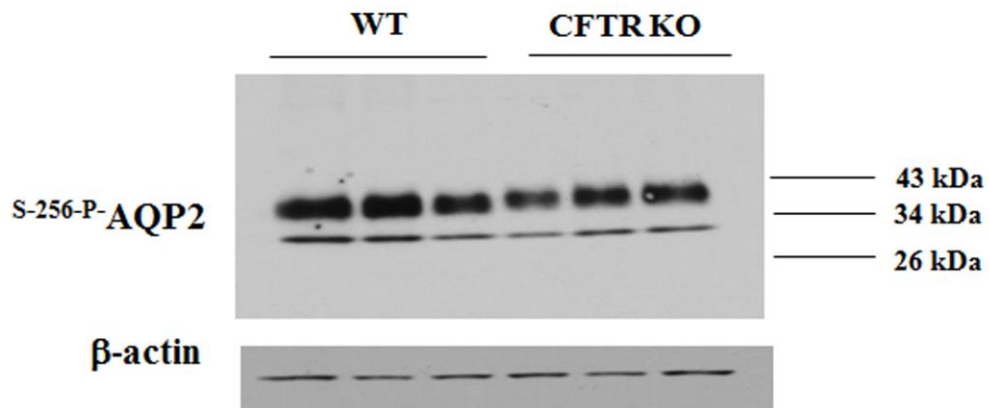
Supplemental data

Fig. 3S. Expression of total and phosphorylated AQP-2 in kidneys of WT and CF mice.

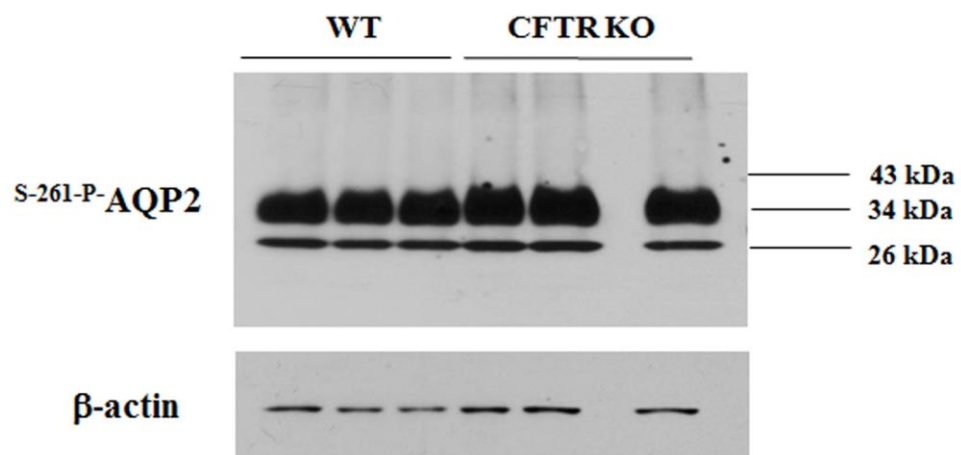
A)



B)

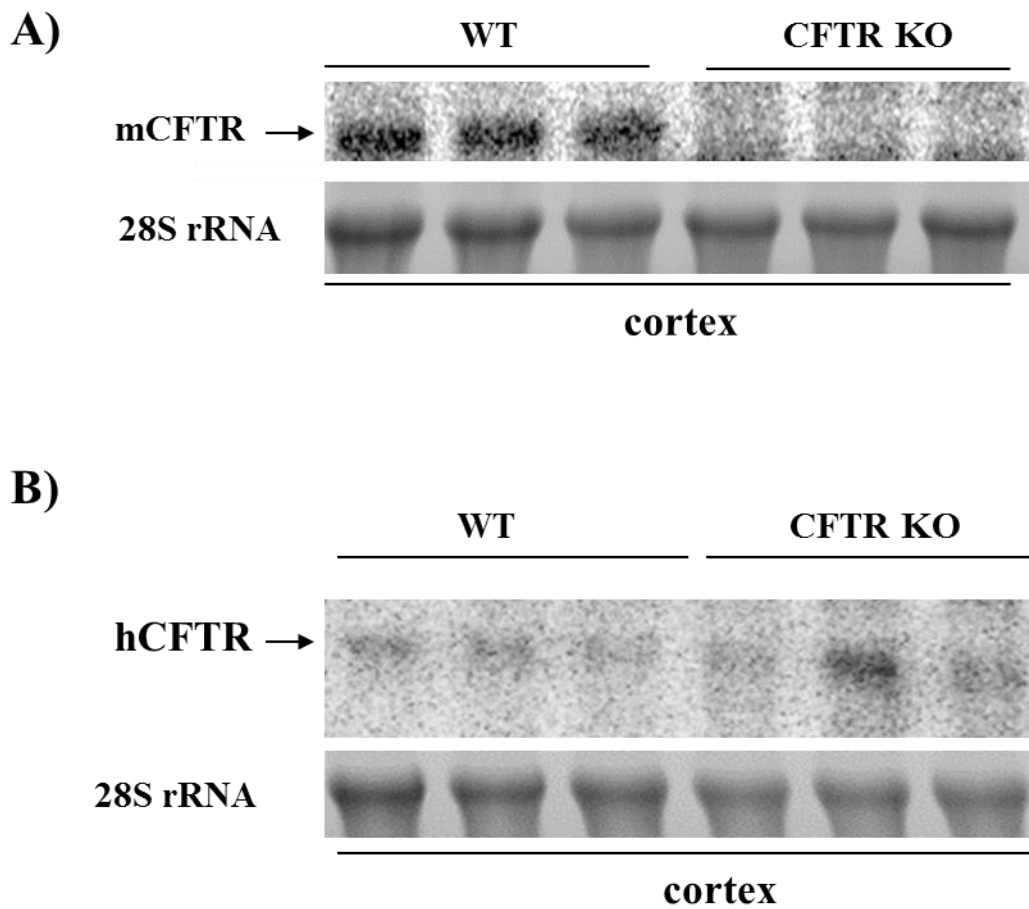


C)



Supplemental data

Fig. 4S. Expression of mouse CFTR (mCFTR) (A) and human CFTR (hCFTR) (B) in kidneys of WT and CF mice.



Supplemental data

Fig. 5S. Expression of Insulin Receptor Related Receptor (IRR) in WT and CF mice.

