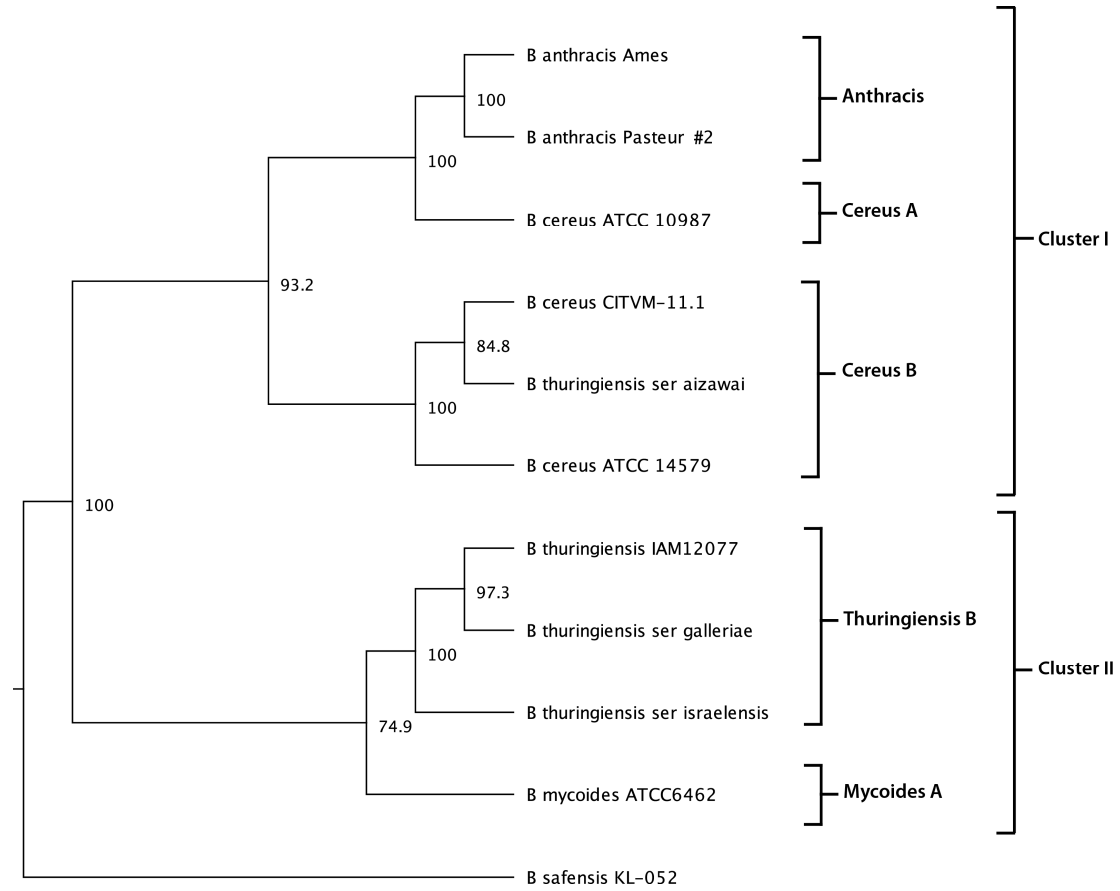
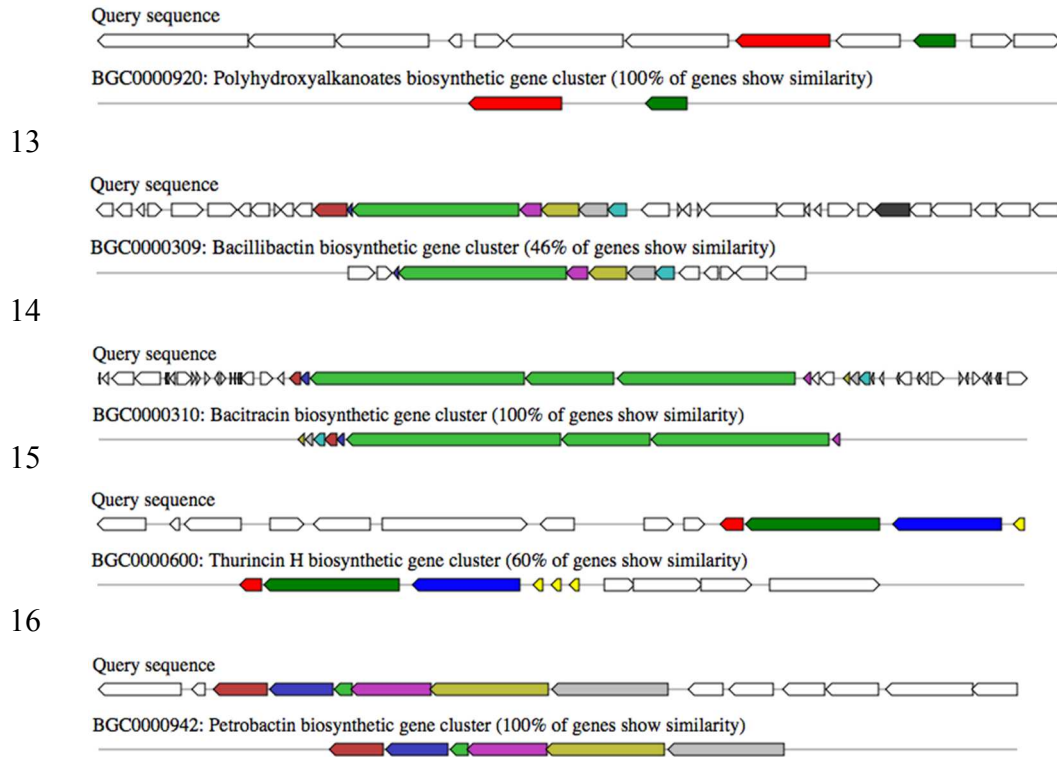


10 **Supplementary Material**



11

12 **Figure S1:** Genetic relationship of *B. cereus* CITVM-11.1 and other strains based on *gyrB* gene sequences [[Bavykin et al., 2004](#)].



19 **Figure S2:** Potential biosynthetic gene clusters associated to secondary metabolites production identified with antiSMASH [[Weber et al., 2015](#)].

20

21