

Supplementary figure legends

Fig. S1. A. Normal gastric cell line GES-1 was transfected with pcDNA-RP or siRNA-RP, and Transwell assays were conducted to evaluate the function of RP11-789C1.1. **B.** Immunohistochemistry was performed to explore the relationship between RP11-789C1.1 and N-cadherin/vimentin in gastric cancer tissues. *P < 0.05; **P < 0.01.

Fig. S2. A. Immunohistochemistry was performed to explore the relationship between miR-5003-3p and N-cadherin in gastric cancer tissues. **B.** Immunohistochemistry was performed to explore the relationship between miR-5003-3p and vimentin in gastric cancer tissues. **P < 0.01.

Fig. S3. A. RP11-789C1.1 expression was measured by qRT-PCR using the products pulled-down by biotinylated miR-5003-3p in MKN-1 cells. **B.** RP11-789C1.1 expression was measured by qRT-PCR using the products pulled-down by biotinylated miR-5003-3p in SGC-7901 cells. **C.** miR-5003-3p expression was measured by qRT-PCR using the products pulled-down by a biotinylated RP11-789C1.1 probe in MKN-1 cells. **D.** miR-5003-3p expression was measured by qRT-PCR using the products pulled-down by a biotinylated RP11-789C1.1 probe in SGC-7901 cells. **P < 0.01.

Supplementary figures

Fig. S1.

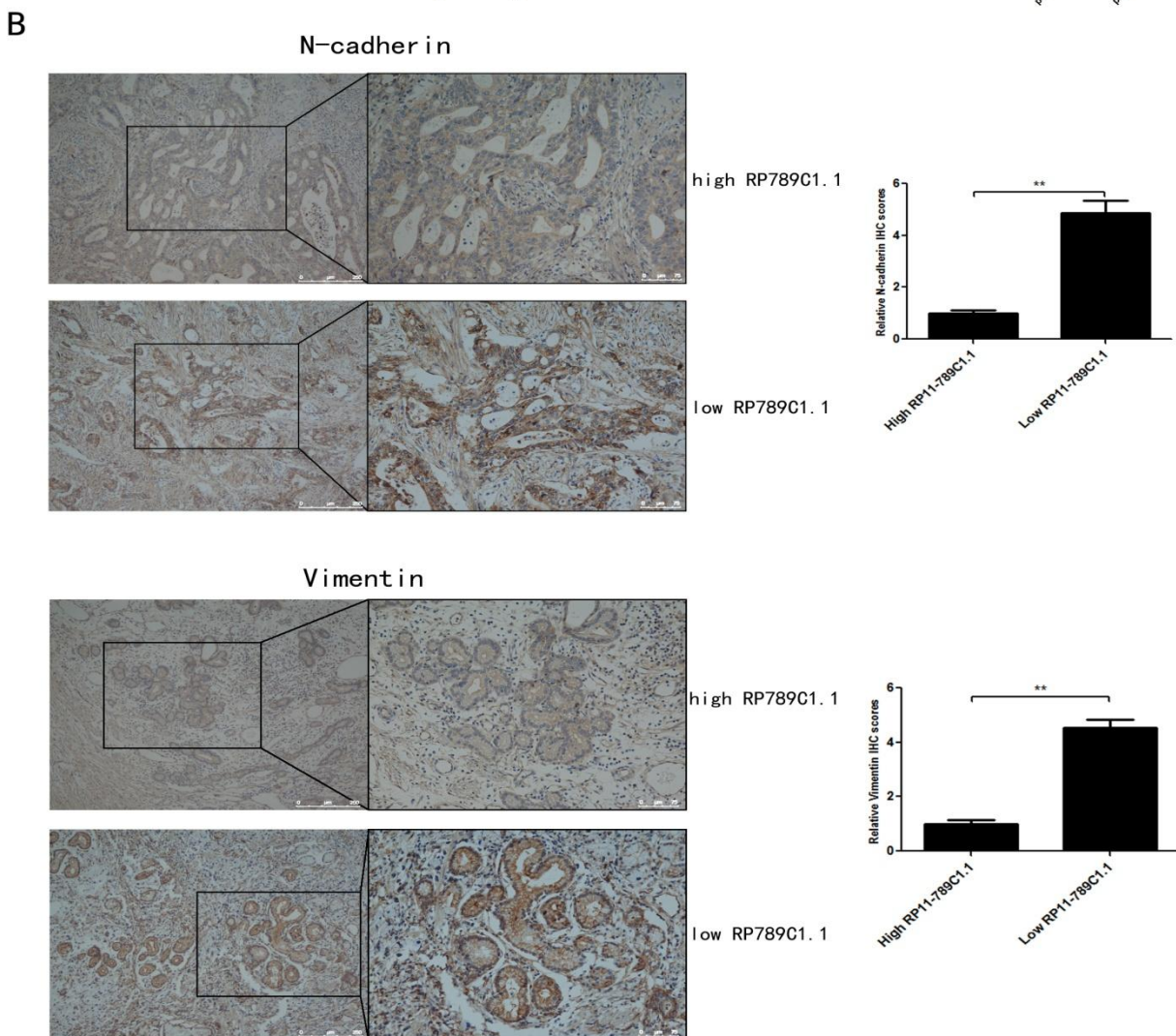
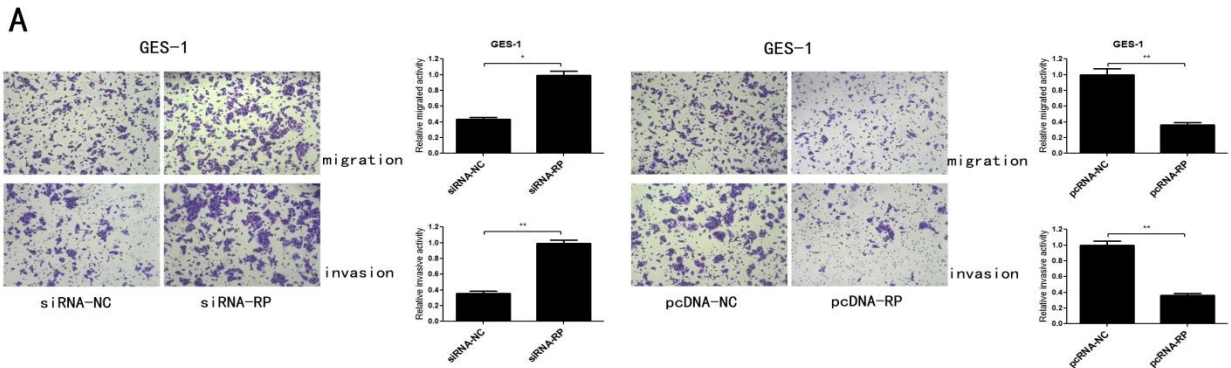


Fig. S2.

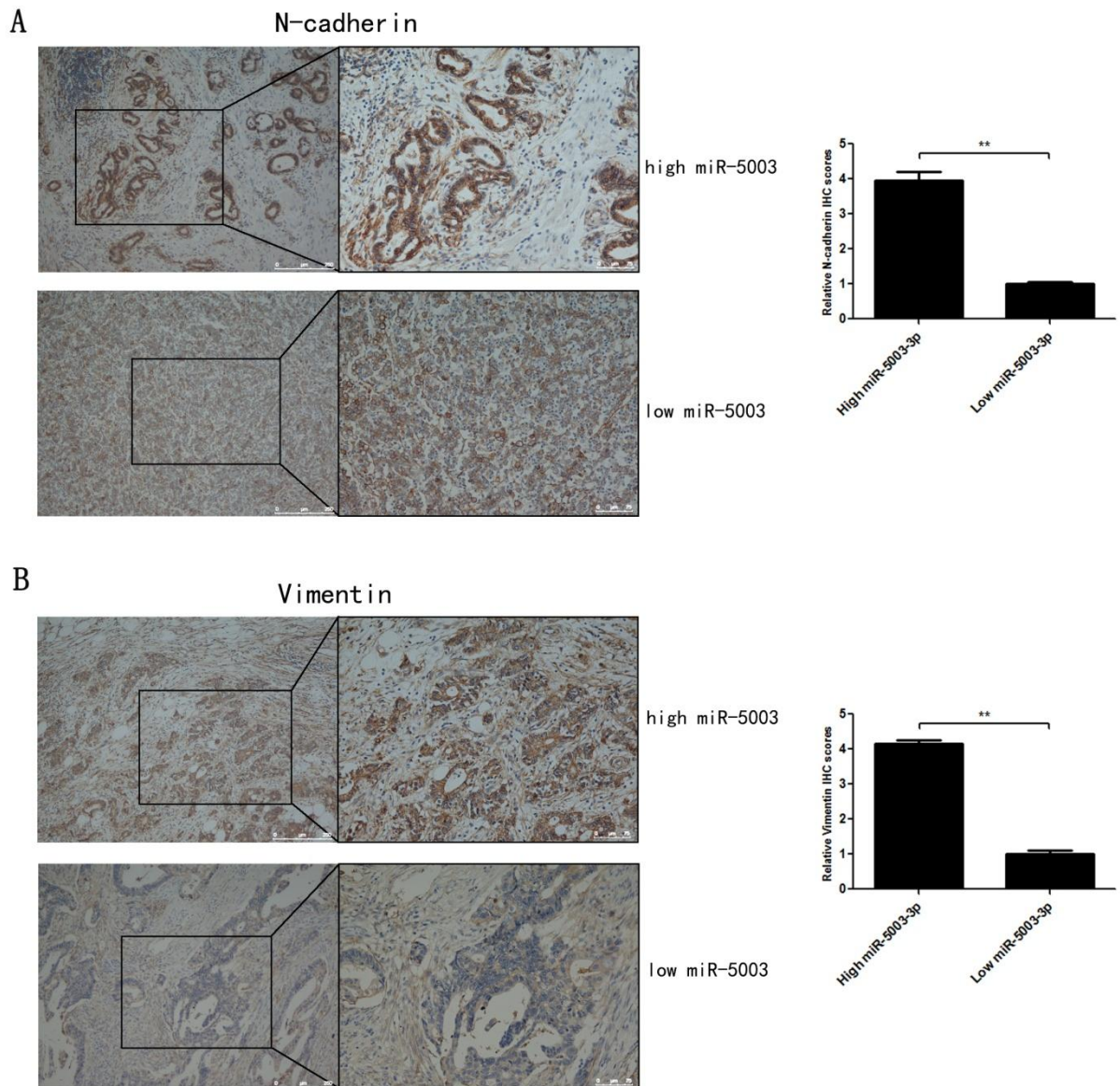


Fig. S3.

