

Supplementary figures

LOC101930370/miR-1471 axis modulates the Hedgehog signaling pathway in breast cancer

Xin Liu^{1#}, Tong Zhao^{1#}, Xue Bai¹, Mingqi Li¹, Jingli Ren², Mengxue Wang¹, Ranchen Xu¹, Shuqian Zhang¹, Huimin Li¹, Yingying Hu³, Liangjun Xie¹, Ying Zhang¹, Lida Yang¹, Chaoqi Yan^{4*}, Yong Zhang^{1,5*}

¹Department of Pharmacology (the State-Province Key Laboratories of Biomedicine-Pharmaceutics of China, Key Laboratory of Cardiovascular Research, Ministry of Education), College of Pharmacy, Harbin Medical University, Harbin 150086, China;

²Department of pharmacology, Luohe Medical College, Luohe 462000, China;

³Department of Pharmacy, The First Affiliated Hospital of Harbin Medical University, Harbin 150086, China;

⁴Department of Breast Surgery, The Second Affiliated Hospital of Harbin Medical University, Harbin 150086, China;

⁵Institute of Metabolic Disease, Heilongjiang Academy of Medical Science, Harbin 150086, China;

#Authors contributed equally to this study.

*Corresponding authors:

Professor Yong Zhang; E-mail: hmuzhangyong@hotmail.com.

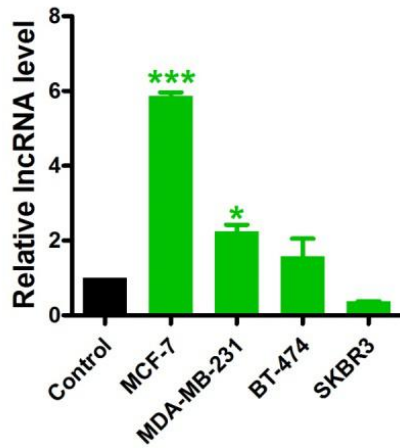
Professor Chaoqi Yan; Email: yanchaoqi2002@163.com

Supplementary figures

Supplementary Fig. 1

LOC101930370 expression levels in four breast cancer cell lines. n=3 batches of cells.

The data are presented as the mean±S.E.M. * p <0.05 *** p <0.001 vs. Control.

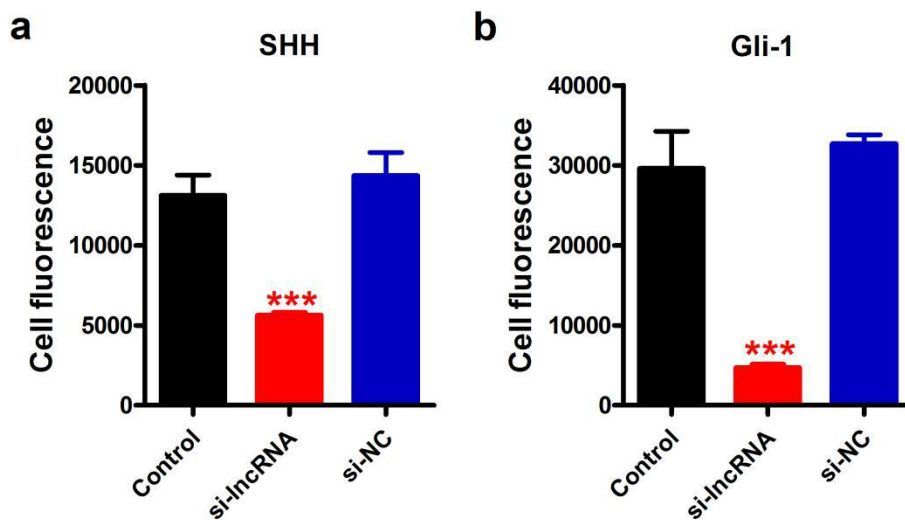


Supplementary Fig. 2

Quantification and statistical analysis of the SHH and Gli-1 immunostaining staining.

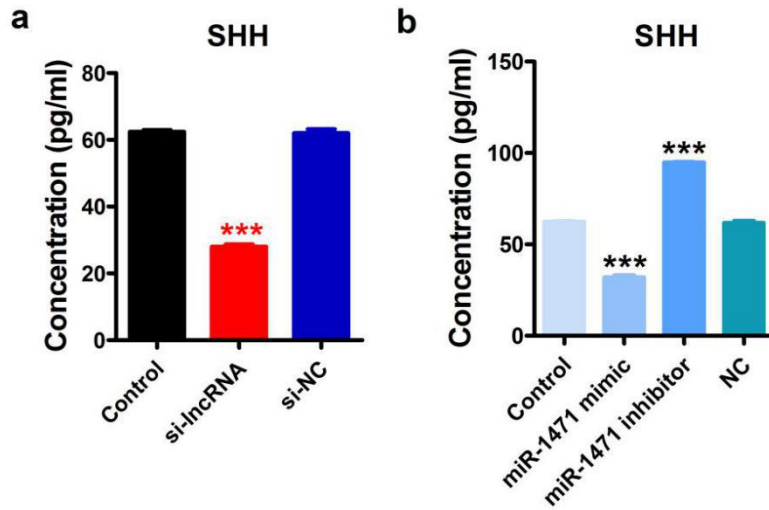
n=3 batches of cells. The data are presented as the mean±S.E.M. *** p <0.001 vs.

Control.



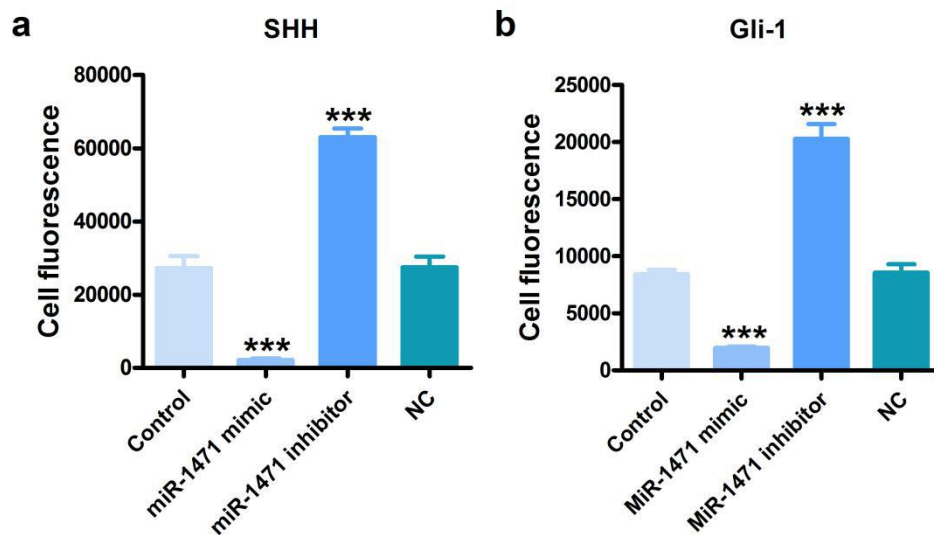
Supplementary Fig. 3

SHH concentrations in cell culture medium. n=3 batches of culture supernatants. The data are presented as the mean±S.E.M. *** p <0.001 vs. Control.



Supplementary Fig. 4

Quantification and statistical analysis of the SHH and Gli-1 immunostaining staining. n=3 batches of cells. The data are presented as the mean±S.E.M. *** p <0.001 vs. Control.



Supplementary Fig. 5

Western blot analysis of E-cadherin, vimentin and α -SMA protein levels. n=3 batches of cells. The data are presented as the mean \pm S.E.M. * $p < 0.05$ ** $p < 0.01$ *** $p < 0.001$ vs. Control.

