

SUPPLEMENTARY MATERIAL

Anti-Cancer Effects of Radix Angelica Sinensis (Danggui) and N-Butylidenephthalide on Gastric Cancer: Implications For REDD1 Activation and Mtor Inhibition

Kuan-Fu Liao^{a,b} Tsung-Lang Chiu^{c,d} Sung-Ying Huang^e Teng-Fu Hsieh^{c,f}
Shu-Fang Chang^g Jhen-Wei Ruan^h Shee-Ping Chenⁱ Cheng-Yoong Pang^{j,k}
Sheng-Chun Chiu^{g,l,m}

^aGraduate Institute of Integrated Medicine, China Medical University, Taichung, ^bDepartment of Internal Medicine, Taichung Tzu Chi Hospital, Buddhist Tzu Chi Medical Foundation, Taichung, ^cSchool of Medicine, Tzu Chi University, Hualien, ^dDivision of Neuro-Oncology, Neuro-Medical Scientific Center, Hualien Tzu Chi Hospital, Buddhist Tzu Chi Medical Foundation, Hualien, ^eDepartment of Ophthalmology, Hsinchu Mackay Memorial Hospital, Hsinchu, ^fDepartment of Urology, Taichung Tzu Chi Hospital, Buddhist Tzu Chi Medical Foundation, Taichung, ^gDepartment of Research, Taichung Tzu Chi Hospital, Buddhist Tzu Chi Medical Foundation, Taichung, ^hImmunology Research Center, National Health Research Institutes, Miaoli, ⁱTzu Chi Stem Cells Center, Hualien Tzu Chi Hospital, Buddhist Tzu Chi Medical Foundation, Hualien, ^jDepartment of Medical Research, Hualien Tzu Chi Hospital, Buddhist Tzu Chi Medical Foundation, Hualien, ^kInstitute of Medical Sciences, School of Medicine, Tzu Chi University, Hualien, ^lDepartment of Laboratory Medicine, Taichung Tzu Chi Hospital, Buddhist Tzu Chi Medical Foundation, Taichung, ^mGeneral Education Center, Tzu Chi University of Science and Technology, Hualien, Taiwan

Table S1. Baseline characteristics.

Characteristics	Exposure	No exposure	p-value
Patient no.	557	2228	
Mean age, years (\pm SD)	60 \pm 13	60 \pm 13	NA
Gender			NA
Male	301(54.0)	1204(54.0)	
Female	256(46.0)	1024(46.0)	
CCIS(\pm SD)	1.5 \pm 2.3	1.5 \pm 2.3	NA
Socioeconomic status			0.325
Low SES	177(31.8)	757(34.0)	
Moderate and high SES	380(68.2)	1471(66.0)	
Urbanization			<0.001
Urban	133(23.9)	695(31.2)	
Un-urban	424(76.1)	1533(68.8)	
Geographic region			0.244
Northern/Central	371(66.6)	1541(69.2)	
Southern/Eastern	186(33.4)	687(30.8)	

Abbreviation: SES, socioeconomic status.

Fig. S1.

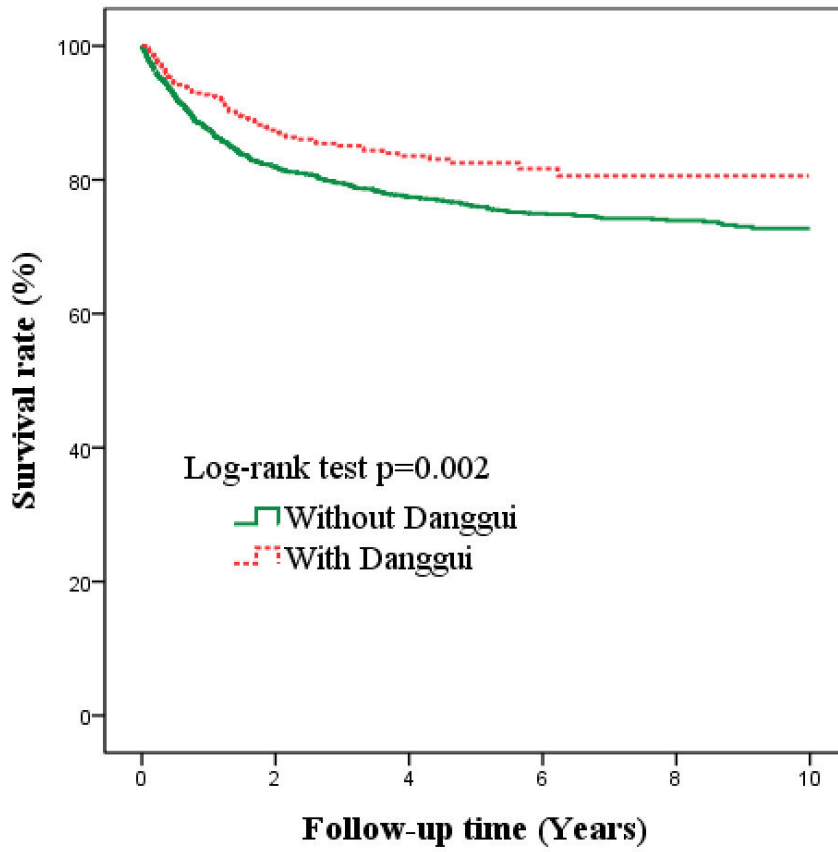
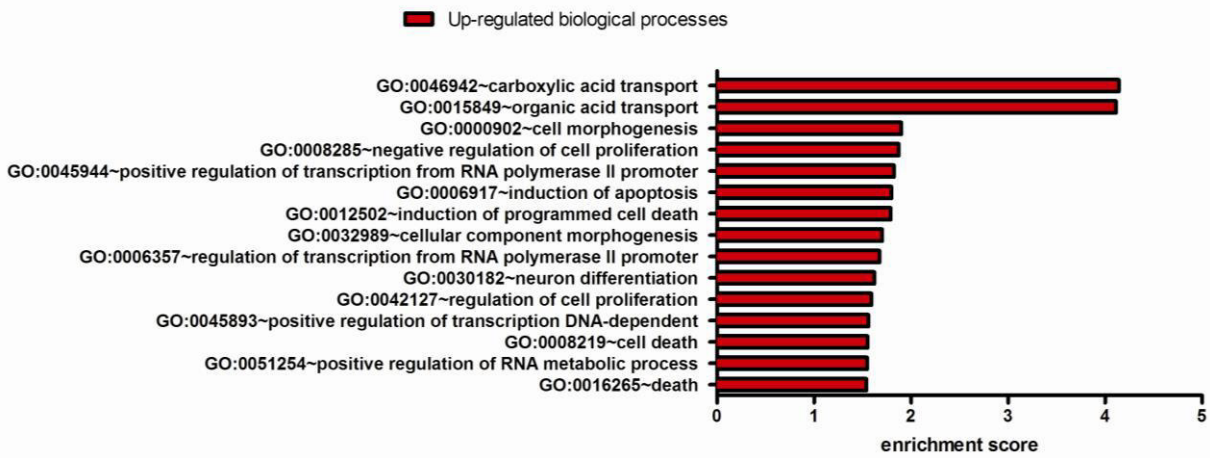


Fig. S1. The effect of *danggui* on the survival rate of Taiwan gastric cancer patients. A total of 32,279 gastric cancer patients were included in this study cohort. These patients accrued follow-up time for 11 years. Crude overall Kaplan-Meier survival curves for the gastric cancer patients was investigated. (log-rank: $p = 0.002$)

Fig. S2

A



B

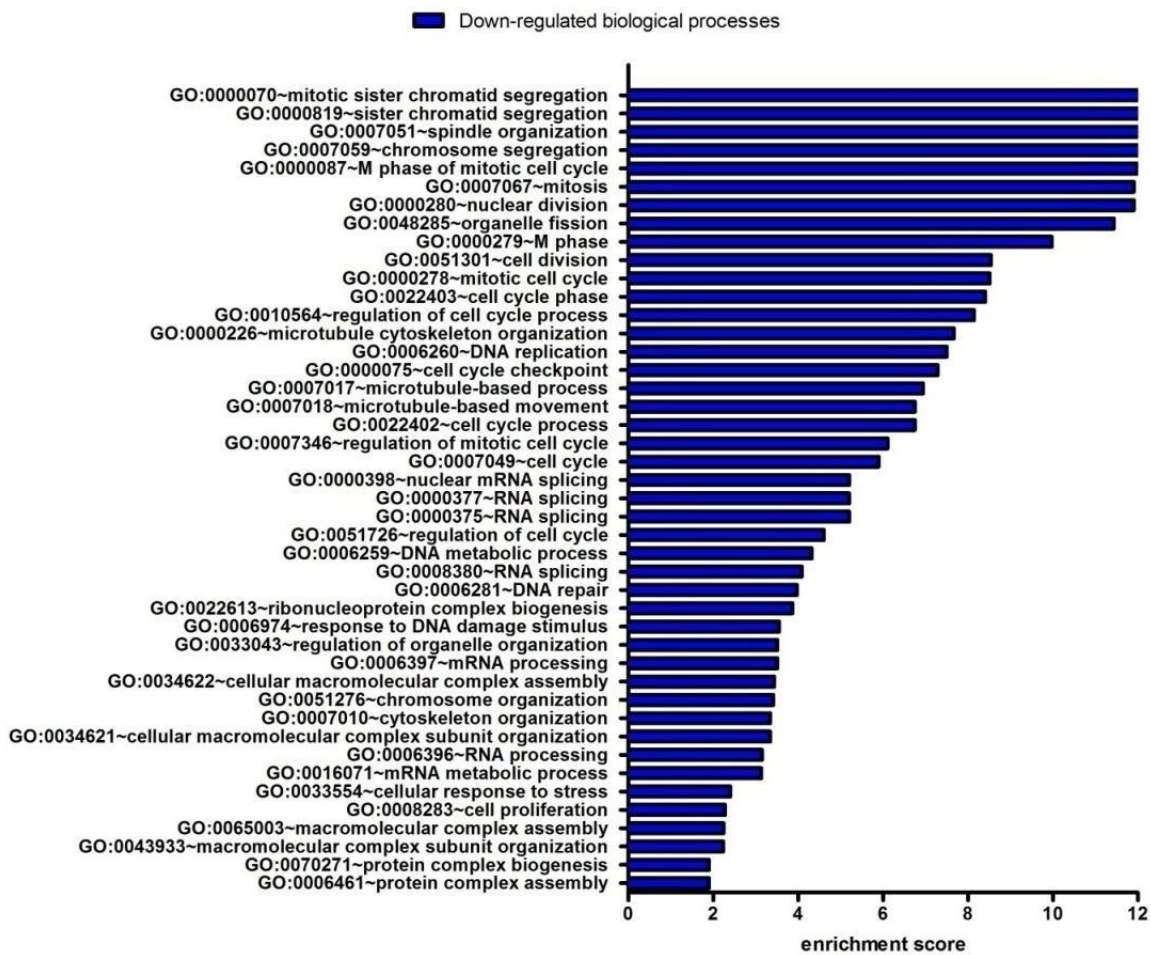


Fig. S2. Analysis of BP regulated gene expression in AGS cells. [A] Gene ontology biological processes that were significantly over-represented among up-regulated and down-regulated [B] genes in the comparison of BP-treated AGS cell to the control group.

Fig. S3.

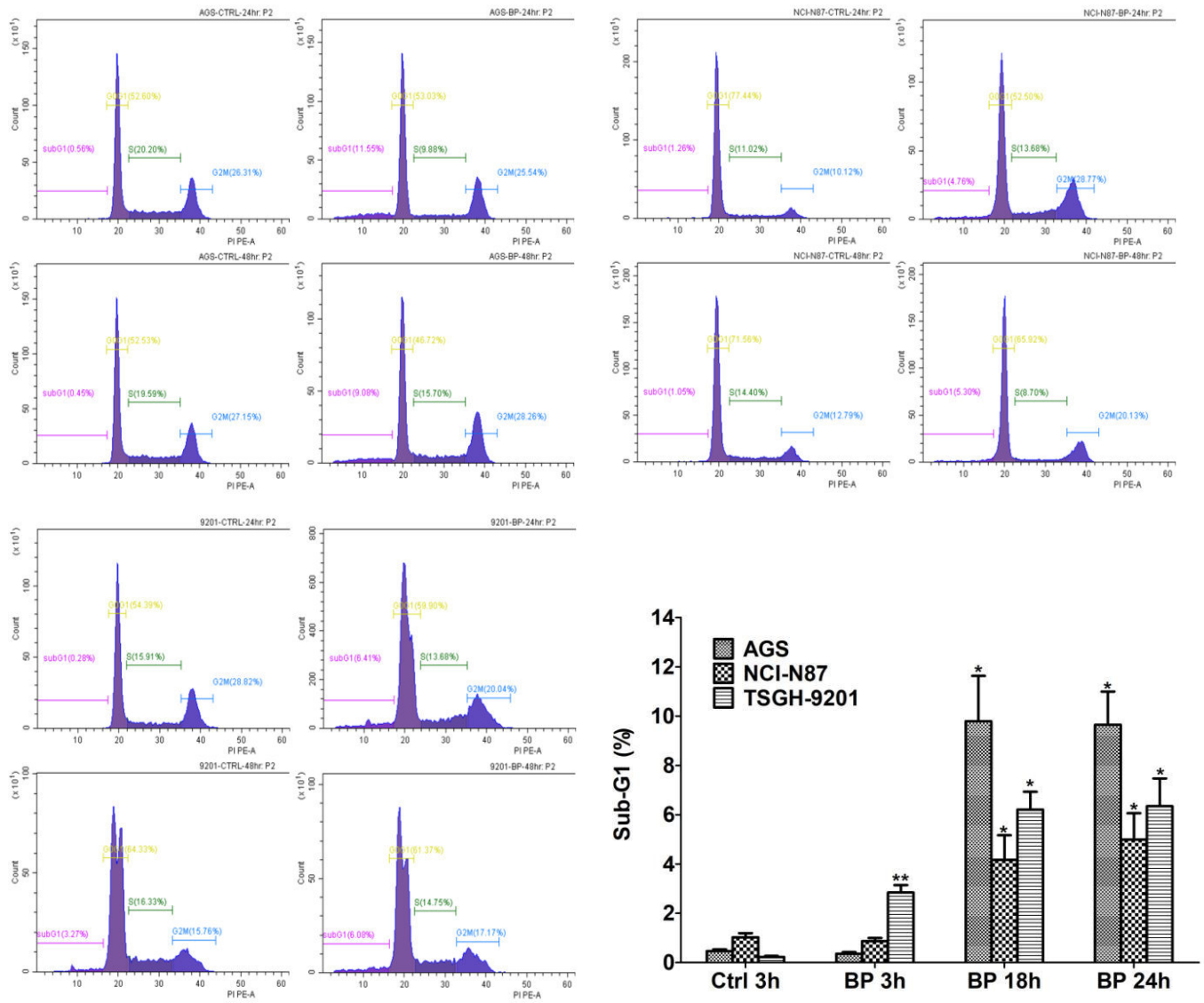


Fig. S3. Flow cytometric analysis of gastric cancer cells treated with BP-Sub G1. The accumulation of sub-G1 cell population in the presence or absence of 50 (AGS) or 75 (NCI-N87 and TSGH-9201) μ g/ml BP for 24 and 48 h. The percentage of sub-G1 population in gastric cancer cells is shown.