

## **Supplementary Material**

# **Discovery and Characterization of a High-Affinity Small Peptide Ligand, H1, Targeting FGFR2IIIc for Skin Wound Healing**

Ying Zhao Qiang Wang Yuan Jin Yadan Li Changjun Nie Peipei Huang Zhixin Li Bihui  
Zhang Zijian Su An Hong Xiaojia Chen

Institute of Biomedicine & Department of Cell Biology, Jinan University, National Engineering Research Center of Genetic Medicine, Guangdong Provincial Key Laboratory of Bioengineering Medicine, Guangzhou, China

## Supplementary Material

### Figure S1. Mass spectrometry results of the 4 small peptides.

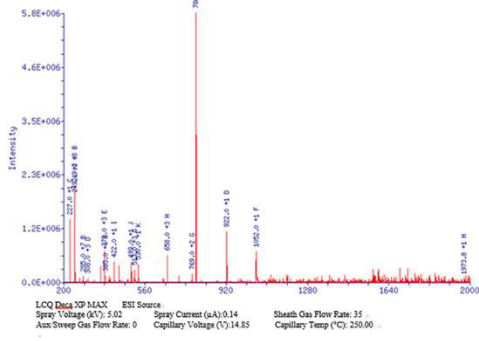
**Figure S2. ITC detection of the interactions between the H1 peptide and other FGFRs.** (A) ITC of H1 peptide interactions with FGFR1c. (B) ITC of interactions between the H1 peptide and FGFR2b. (C) ITC of interactions between the H1 peptide and FGFR3b. (D) ITC of interactions between the H1 peptide and FGFR3c. (E) ITC of interactions between the H1 peptide and FGFR4.

**Figure S3. Preliminary molecular docking results of the H1 peptide binding with FGFR2IIIc.** Three- dimensional image of the molecular docking result visualizing by PyMOL. Docking results showed that the 20 binding conformations were all concentrated in the D2-D3 linker region.

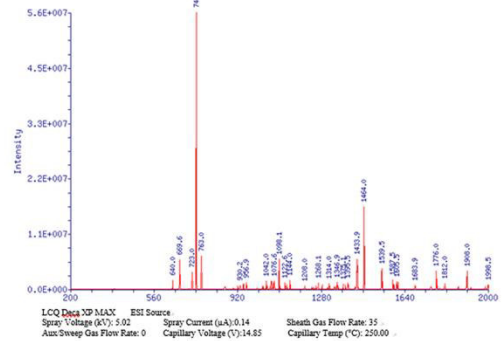
**Supplementary Table 1. Primer sequences used for qPCR analysis of 6 identified genes.**

Gene Symbol	GenBank Accession	Forward Primer	Reverse Primer
PRKCG	NM_002739	AGCCACAAGTTCACCGCTC	GGCACTCGAAGGTCACAAAT
HSPB1	NM_001540	ACGGTCAAGACCAAGGATGG	ACGGTCAAGACCAAGGATGG
JUND	NM_005354	TCATCATCCAGTCCAACGGG	TTCTGCTTGTGTAATCCTCCG
TGFB1	NM_000660	GGCCAGATCCTGTCCAAGC	GTGGGTTTCCACCATTAGCAC
DUSP8	NM_004420	TCAGTCCGTCAACATCTGC	CGCGTGCTCTGGTCATAGA
DUSP15	NM_080611	AACCCCAACCCAGGCTTTAG	GCAAGAGAAAGTCTGCTTGACG

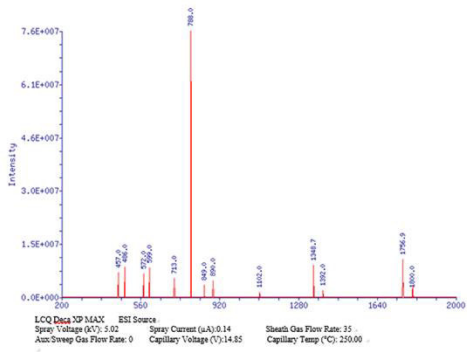
**A** Product Name: H1 MW: 786.89



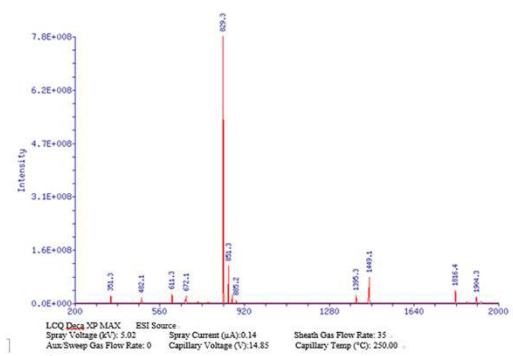
**B** Product Name: H2 MW: 741.75



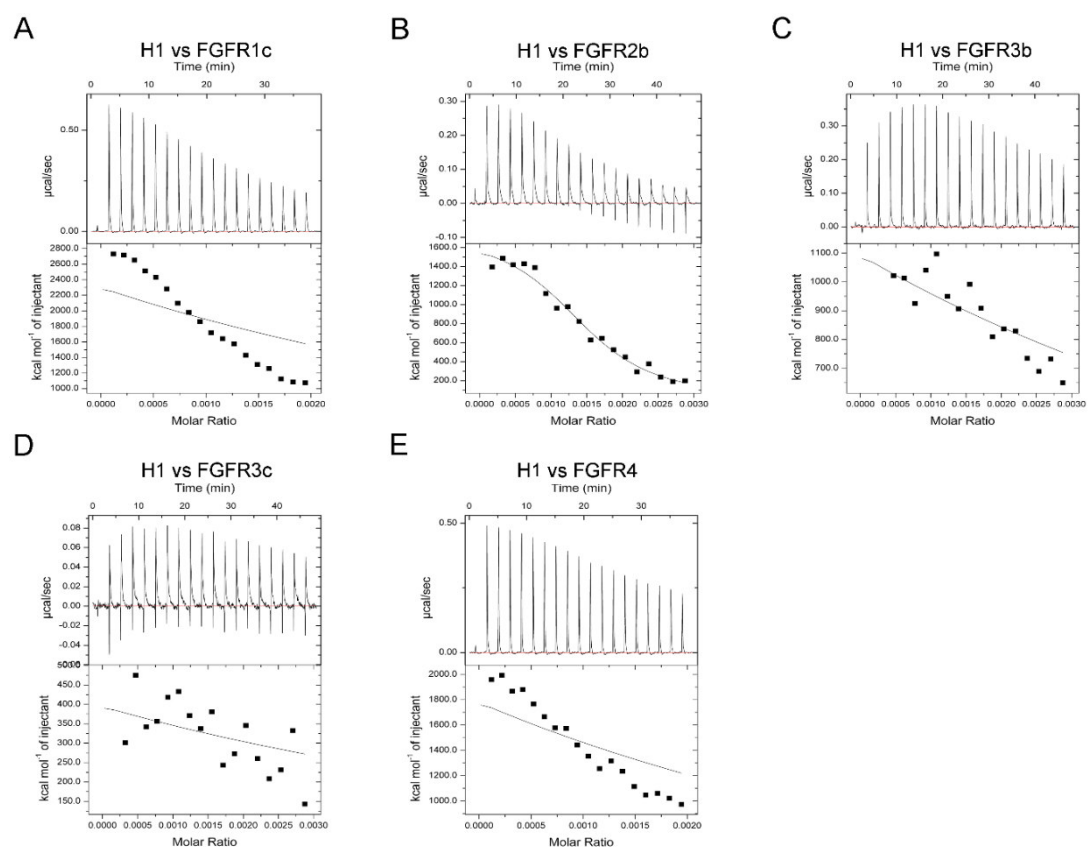
**C** Product Name: H3 MW: 788.90



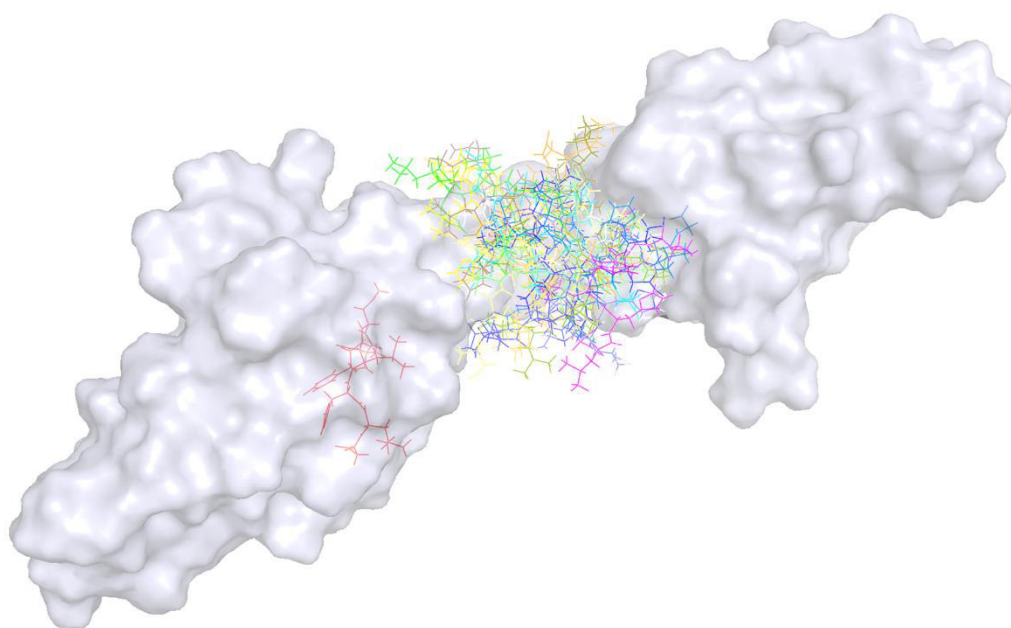
**D** Product Name: H4 MW: 829.86



Supplementary Figure S1



Supplementary Figure S2



**Supplementary Figure S3**