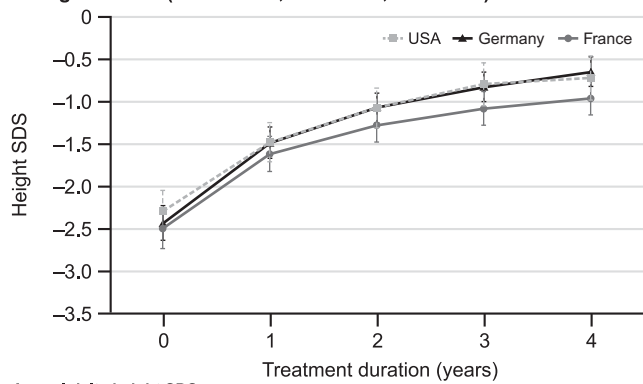


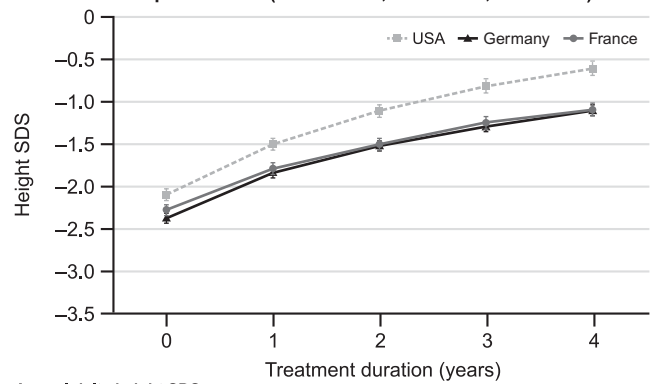
A. Organic GHD (USA n=105; GE n=161; FR n=109)



Annual delta height SDS

	Year 0 to 1	Year 1 to 2	Year 2 to 3	Year 3 to 4
USA	0.81 (0.67; 0.96)	0.41 (0.32; 0.49)	0.28 (0.21; 0.35)	0.09 (0.02; 0.16)
Germany	0.90 (0.80; 1.01)	0.41 (0.34; 0.47)	0.24 (0.19; 0.29)	0.18 (0.14; 0.23)
France	0.87 (0.72; 1.01)	0.33 (0.26; 0.41)	0.20 (0.15; 0.26)	0.11 (0.06; 0.17)

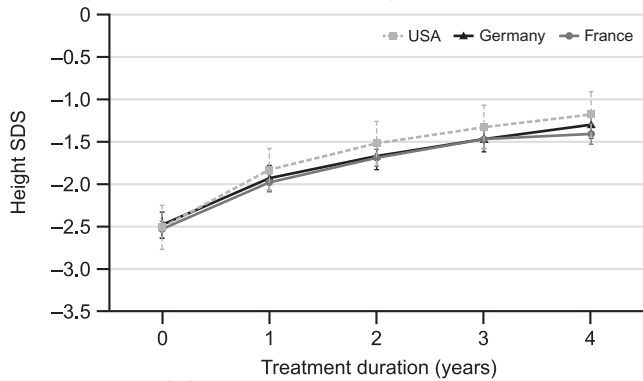
B. Isolated idiopathic GHD (USA n=437; GE n=569; FR n=294)



Annual delta height SDS

	Year 0 to 1	Year 1 to 2	Year 2 to 3	Year 3 to 4
USA	0.61 (0.57; 0.65)	0.39 (0.36; 0.42)	0.32 (0.29; 0.35)	0.22 (0.19; 0.24)
Germany	0.55 (0.51; 0.58)	0.32 (0.30; 0.35)	0.23 (0.21; 0.25)	0.20 (0.17; 0.22)
France	0.51 (0.47; 0.55)	0.28 (0.25; 0.32)	0.26 (0.22; 0.30)	0.17 (0.13; 0.20)

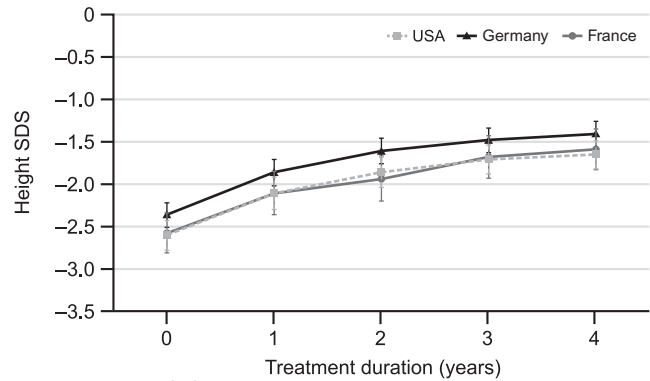
C. SGA (USA n=40; GE n=102; FR n=112)



Annual delta height SDS

	Year 0 to 1	Year 1 to 2	Year 2 to 3	Year 3 to 4
USA	0.69 (0.53; 0.85)	0.34 (0.25; 0.44)	0.18 (0.08; 0.28)	0.17 (0.08; 0.26)
Germany	0.53 (0.47; 0.59)	0.28 (0.21; 0.36)	0.20 (0.15; 0.25)	0.17 (0.12; 0.22)
France	0.56 (0.50; 0.63)	0.29 (0.23; 0.35)	0.22 (0.17; 0.28)	0.06 (0.01; 0.11)

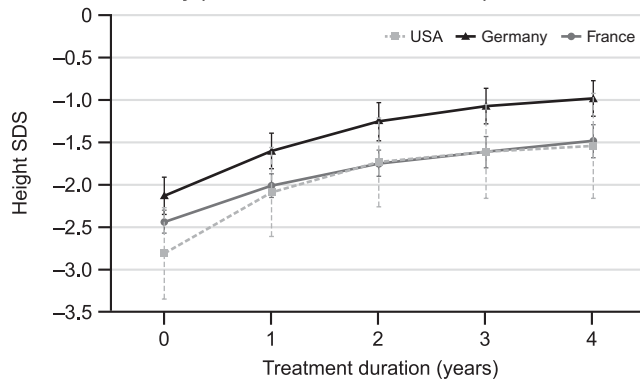
D. Turner syndrome (USA n=103; GE n=129; FR n=46)



Annual delta height SDS

	Year 0 to 1	Year 1 to 2	Year 2 to 3	Year 3 to 4
USA	0.53 (0.44; 0.61)	0.25 (0.18; 0.31)	0.14 (0.08; 0.20)	0.06 (0.00; 0.12)
Germany	0.50 (0.44; 0.56)	0.25 (0.20; 0.30)	0.14 (0.09; 0.19)	0.08 (0.03; 0.13)
France	0.47 (0.37; 0.56)	0.18 (0.09; 0.27)	0.25 (0.17; 0.33)	0.09 (0.00; 0.19)

E. SHOX deficiency (USA n=10; GE n=67; FR n=46)



Annual delta height SDS

	Year 0 to 1	Year 1 to 2	Year 2 to 3	Year 3 to 4
USA	0.71 (0.50; 0.91)	0.33 (0.16; 0.49)	0.13 (0.00; 0.27)	0.05 (-0.16; 0.27)
Germany	0.54 (0.44; 0.64)	0.36 (0.25; 0.48)	0.18 (0.12; 0.24)	0.09 (0.01; 0.18)
France	0.45 (0.35; 0.55)	0.26 (0.16; 0.36)	0.13 (0.04; 0.22)	0.14 (0.06; 0.21)