

Figure S1. Hb over time for both groups

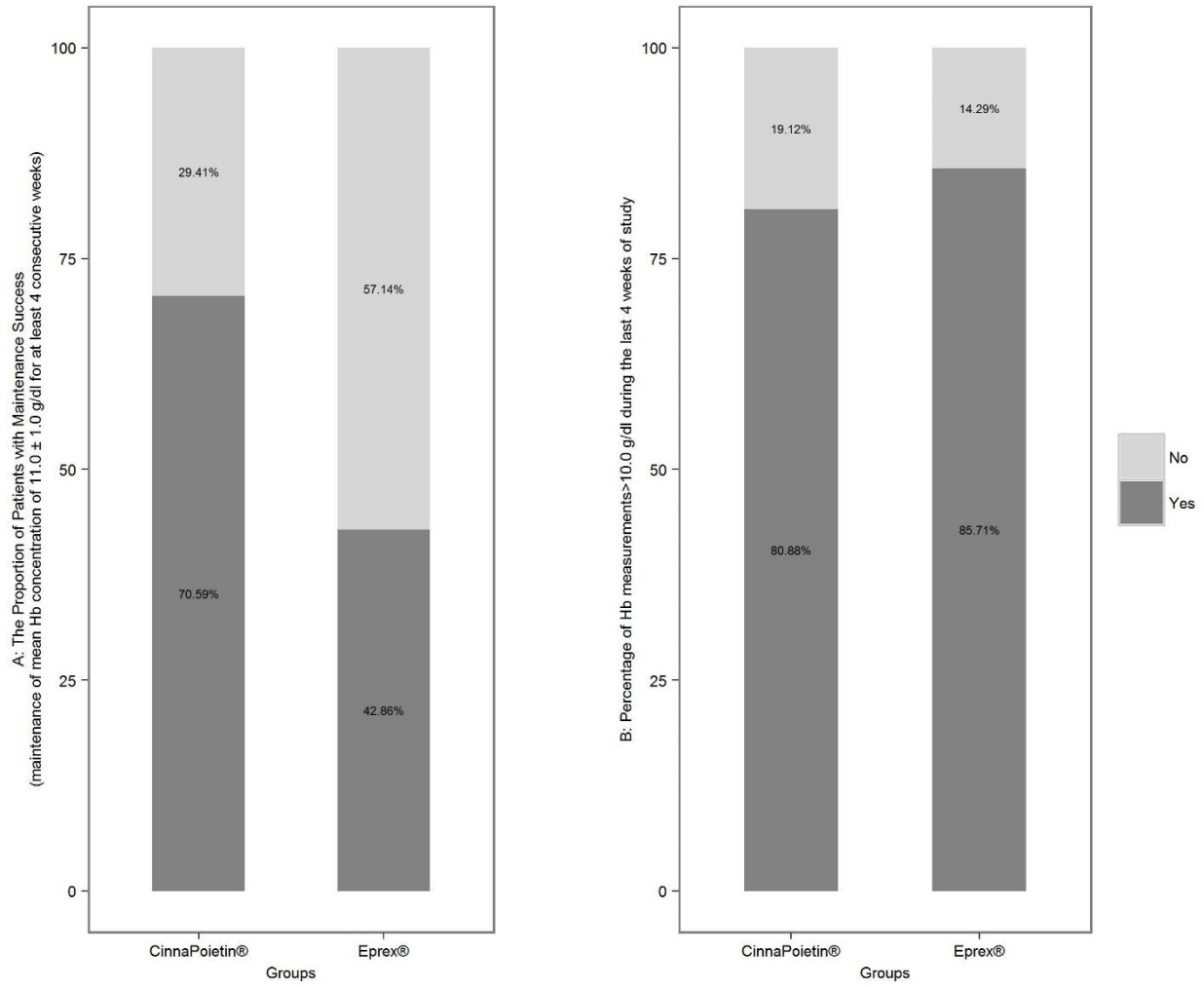
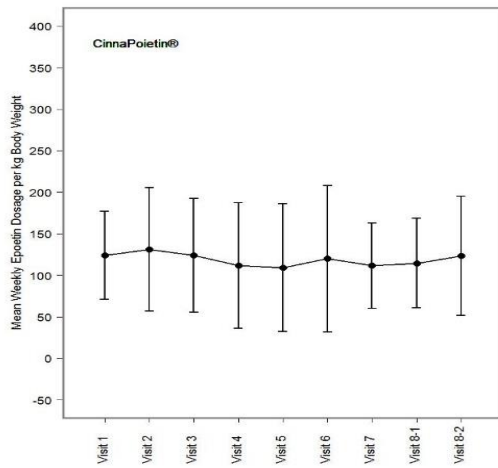
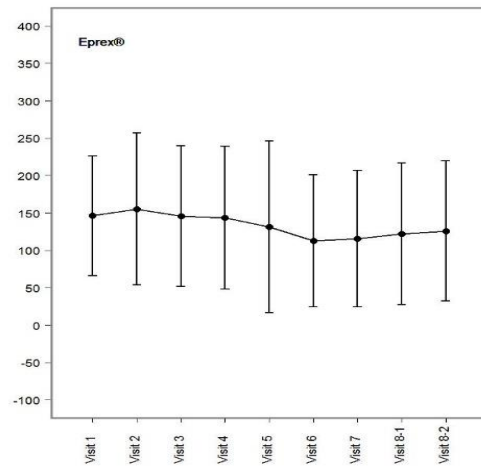


Figure S2. Proportion of patients with maintenance success and percentage of Hb measurements >10.0 gr/dl during the last four weeks.



No significant difference in the starting dose vs end for CinnaPoietin® (p-value = 0.83)



No significant difference in the starting dose vs for Eprex® (p-value = 0.15)

Figure S3. Mean weekly epoetin dosage trend over visits

Table S1. Route of administration by group

Group	Route of administration	N (%)
CinnaPoietin®	IV	25 (32.05)
Eprex®	IV	23 (29.49)
CinnaPoietin®	SC	53 (67.95)
Eprex®	SC	55 (70.51)

Table. S2. Summarizing data on hemoglobin, hematocrit and iron status excluding patients with mean Hgb ≥ 13

Group	CinnaPoietin®		Eprex®		Total		P-value
	N	Mean±SD	N	Mean±SD	N	Mean±SD	
Hgb	66	10.82±1.09	45	11.12±1.19	111	10.94±1.14	0.16
Hct	66	33.76±3.55	45	34.8±3.57	111	34.18±3.58	0.14
Ferritin	65	504.24±390.28	45	497.13±320.7	110	501.33±361.89	0.92
TSAT	64	27.75±11.75	45	46.54±64.97	109	35.51±43.43	0.06