

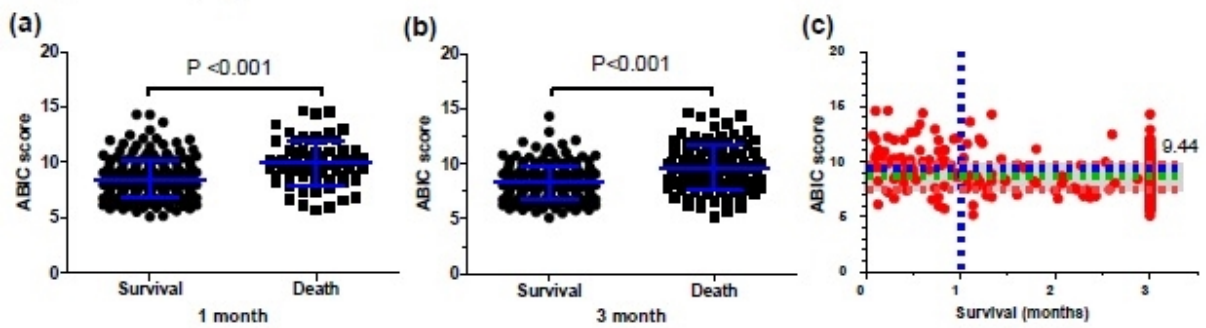
Supplementary Material

Predictive Value of Age-Bilirubin-International Normalized Ratio-Creatinine Score in Short-Term Survival of Acute-on-Chronic Hepatitis B Liver Failure

Liang Chen^{a,b} Jun Zheng^{a,b} Jianye Cai^{a,b} Yusheng Jie^{b,c} Yingcai Zhang^{a,b}
Hui Li^{a,b} Tongyu Lu^{a,b} Liying He^d Cuicui Xiao^{b,e} Kaining Zeng^{a,b}
Hongyuan Fu^{a,b} Haibo Li^{a,b} Bin Ouyang^f Guihua Chen^{a,b} Jia Yao^{a,b} Jiao Gong^g Yang
Yang^{a,b}

^aDepartment of Hepatic Surgery, The Third Affiliated Hospital, Sun Yat-sen University, Guangdong, ^bGuangdong Key Laboratory of Liver Disease Research, Key Laboratory of Liver disease biotherapy and Translational Medicine of Guangdong Higher Education Institute, The Third Affiliated Hospital, Sun Yat-sen University, Guangdong, ^cDepartment of Infectious Diseases, The Third Affiliated Hospital, Sun Yat-sen University, Guangdong, ^dDepartment of Gastroenterology, Guangzhou Women and Children's Medical Center, Guangzhou, ^eBiological Therapy Center, The Third Affiliated Hospital, Sun Yat-sen University, Guangdong, ^fDepartment of Andrology, Guangzhou First People's Hospital, School of Medicine, South China University of Technology, Guangzhou, ^gDepartment of Laboratory Medicine, The Third Affiliated Hospital, Sun Yat-sen University, Guangdong, China

Supplementary Figure S1



Supplemental materials

Figure S1.

Sensitivities and specificities for ABIC score, CLIF-C OF score, Child-Pugh score and MELD score in predicting 1-month (a) and 3-month (c) mortality of patients with ACLF satisfying EASL criteria. Kaplan-Meier survival curves of patients stratified by the optimal cut-off values of ABIC score within 1 month (b) and 3 months (d).

ABIC score, age-bilirubin-international-normalized ratio-creatinine score; ACLF, acute-on chronic liver failure; CLIF-C OF score, chronic liver failure Consortium Organ Failure score; EASL, European Association for the Study of the Liver; MELD, model for end-stage liver diseases.