

## **SUPPLEMENTARY INFORMATION FOR:**

### **Cell Type-specific Gene Expression of $\alpha 5$ -subunit-containing GABA-A Receptors in Human and Mouse Frontal Cortex**

Xiyue Hu, Brad R. Rocco, Corey Fee, Etienne Sibille\*

\*To whom correspondence should be addressed. Email: Etienne.Sibille@camh.ca

#### **Table of Contents**

##### **Supplementary Tables**

- **Supplementary Table 1.** Demographic and postmortem characteristics of human brain samples.

##### **Supplementary Figures**

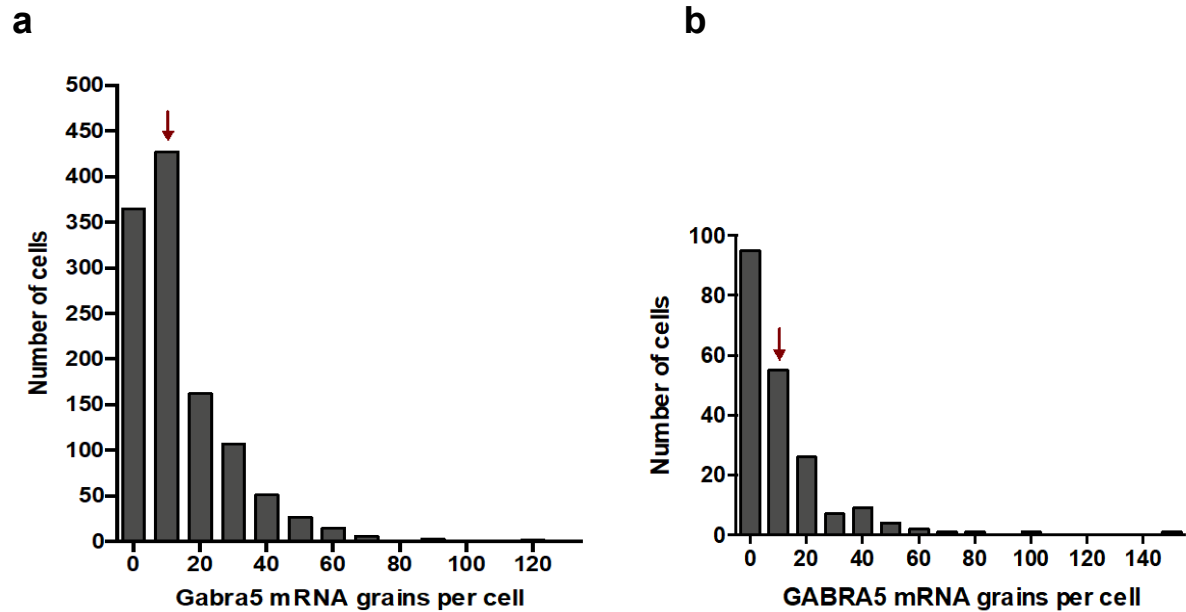
- **Supplementary Figure 1.** Frequency distribution of  $\alpha 5$  mRNA grains per cell body, all cell types

**Supplementary Table 1. Demographic and postmortem characteristics of human brain samples.**

<b>Subject</b>	<b>Sex</b>	<b>Race</b>	<b>Age (yrs)</b>	<b>PMI<sup>A</sup></b>	<b>pH</b>	<b>Cause of Death</b>
<b>1</b>	Male	Caucasian	47	12	6.49	Natural (Myocardial ischemia)
<b>2</b>	Male	Caucasian	46	19.5	6.42	Natural (Myocardial infarction)
<b>3</b>	Male	Caucasian	51	15	6.83	Accident
<b>4</b>	Male	Caucasian	55	24	6.75	Accident
<b>5</b>	Male	Caucasian	55	21	6.70	Natural (Acute myocardial insufficiency)

PMI<sup>A</sup>, post-mortem interval (hours)

## Supplementary Figure 1



**Figure 1. Frequency distribution of  $\alpha 5$  mRNA grains per cell body, all cell types**  
Histograms (bin width=10) of **(a)** *Gabra5* (mouse) and **(b)** GABRA5 (human) mRNA grains per each cell sampled. Arrows indicate the bin with cells containing 10-19 mRNA grains. Cells containing  $\geq 10$  mRNA grains were defined as *Gabra5*/GABRA5 positive cells.