

## Supplementary Material

**Table S1.** Scoring standard for miR-192 in situ hybridization in renal tissue

<b>Score</b>	<b>Description</b>
0	Merely negative expression in tubular epithelia and interstitial
1	Weak staining intensity and less than 20% of positive expression cell distribution in tubular epithelia and interstitial area
2	Between score 1 and 3
3	Stong staining intensity and greater than 50% of positive expression cell distribution in tubular epithelia and interstitial area

**Table S2.** Correlation between miR-192 and clinical characteristics in IgA nephropathy patients

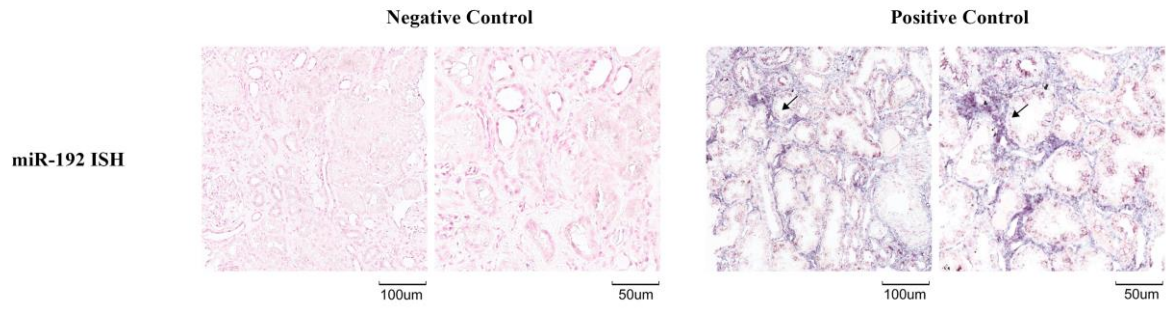
	<b>Serum miR-192</b>	<b>Urine miR-192</b>	<b>Renal tissue miR-192</b>
Serum miR-192*	-	0.707	r=0.690, p=0.013
Urine miR-192*	p=0.707	-	0.264
Renal miR-192	r=0.690, p=0.013	0.264	-
Proteinuria	0.736	0.881	0.758
Urine albumin / creatinine ratio	0.566	0.910	0.758
Urine albumin	0.267	0.995	0.927
eGFR	r=0.314, p=0.027	p=0.130	r=0.709, p=0.010
Serum creatinine	r=-0.342, p=0.015	0.161	0.218
BUN	0.124	0.269	0.602
Uric acid	r=-0.368, p=0.009	r=-0.359, p=0.001	0.290
Albumin	0.154	0.666	r=0.800, p=0.002
Hemoglobin	0.817	0.686	0.074
Platelet	0.224	0.457	0.533
C-reactive protein	0.157	0.220	r=-0.730, p=0.040
Serum iron	0.198	0.208	0.126
TIBC	0.182	0.720	0.512
Calcium Correction	0.090	0.857	0.686
Phosphorus	0.332	0.733	0.450
Total triglyceride	0.633	0.934	0.795
Total cholesterol	0.514	0.248	0.937
LDL-C	0.896	0.829	0.524
C3	0.120	0.984	0.338
C4	0.357	0.221	r=-0.756, p=0.030

Serum and urinary exosome miR-192  $-\Delta\Delta Ct$  values were normality and used to present expression of miR-192 in correlation analysis. Correlation coefficient were calculated using Spearman's rank correlation.

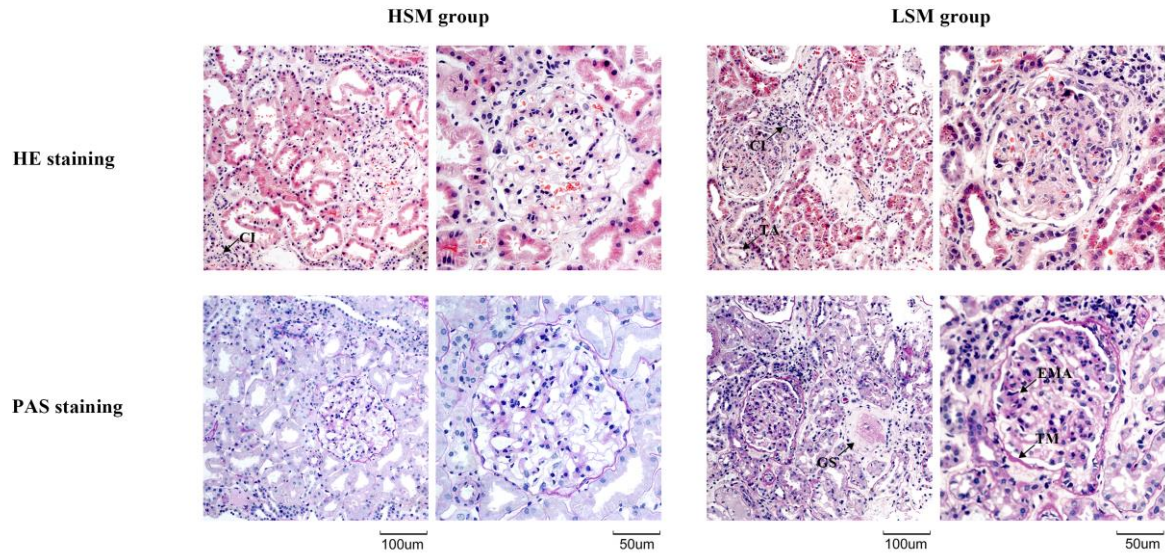
**Table S3.** Correlation between miR-192, TGF- $\beta$ 1 and E-Cadherin expression quantification in IgA nephropathy patients

	<b>Renal tissue miR-192</b>	<b>Serum miR-192</b>
TGF- $\beta$ 1(T)	p=0.212	r=-0.308, p=0.029
TGF- $\beta$ 1(G)	p=0.209	p=0.061
E-Cadherin	r=0.738, p=0.037	r=0.484, p=0.004

(T), Tubulointerstitial area; (G) Glomerular area. Correlation coefficient were calculated using Spearman's rank correlation.



**Fig. S1.** Negative and positive controls of miR-192 in situ hybridization of human kidney. Positive areas were marked by arrow.



**Fig. S2.** Light microscopic examination of HE and PAS staining of renal serial section in HSM and LSM group. Typical changes were marked by arrow in images. LSM group had more inflammatory cell infiltration (CI) in interstitial, more glomeruli extracellular matrix accumulation (EMA) and severer thicken membrane (TM) in glomerular, and tubular atrophy and brush fallout (TA) than HSM group. LSM also had glomerular sclerosis (GS).