

Figure-S1. Food consumption and body weight during the experiment. Values are mean \pm SEM, n=10 and 7 for normotensive and hypertensive groups, respectively. *p<0.05 vs. normotensive rabbits.

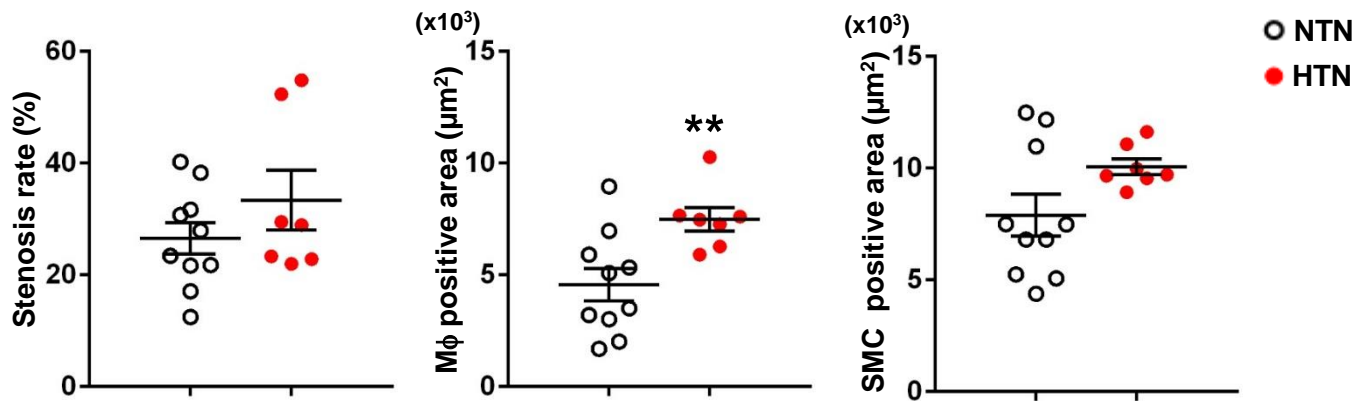


Figure-S2. Microscopic analysis of right coronary atherosclerosis in hypertensive and normotensive rabbits. Stenosis rate was calculated as intimal lesion area /lumen area. Intimal lesion area and lumen area was measured under EVG staining and M ϕ positive area and SMC positive area were measured using immunohistochemical stained specimens. Values are mean \pm SEM, n=10 and 7 for normotensive and hypertensive groups, respectively. **p<0.01 vs. normotensive rabbits.

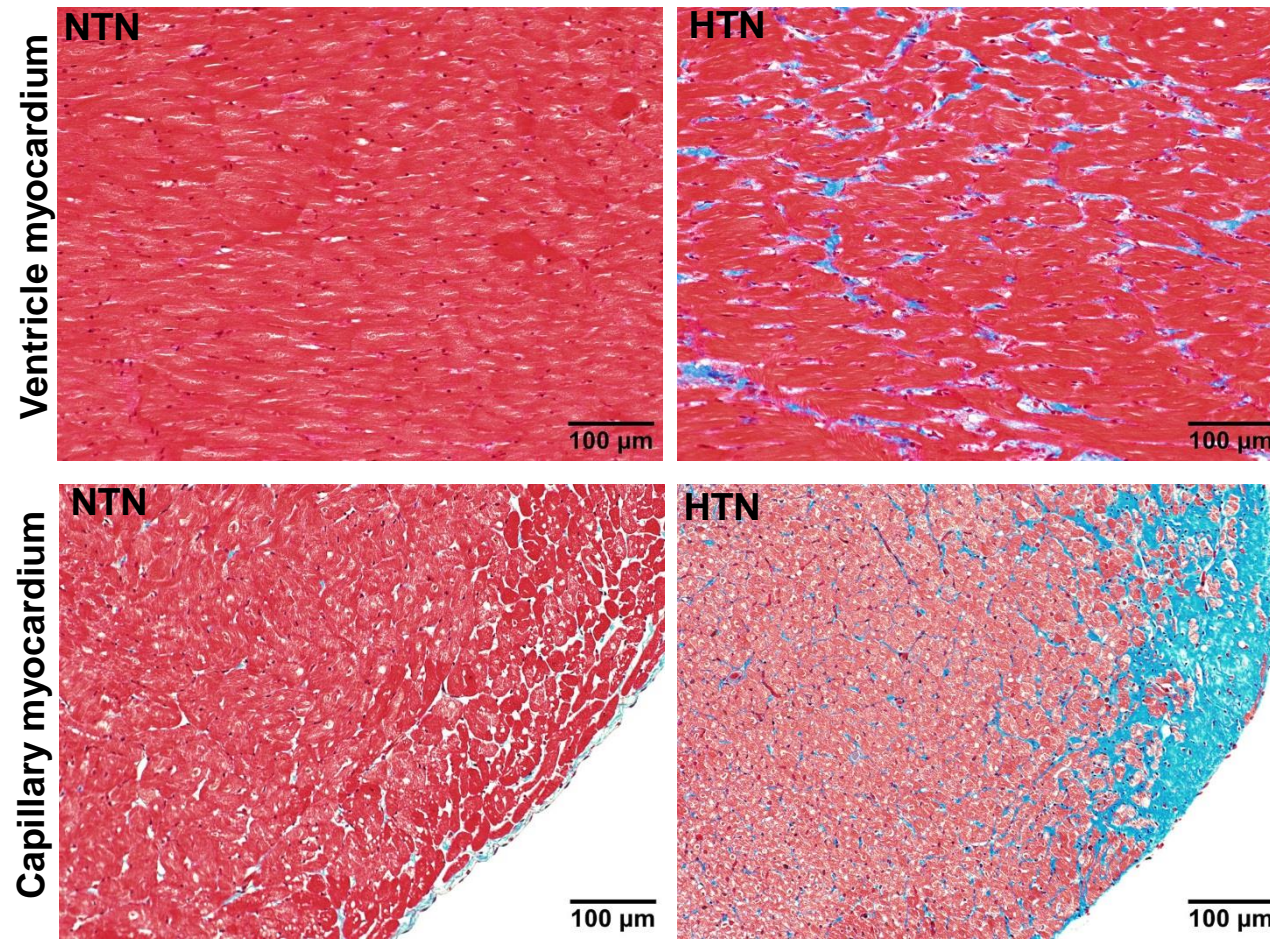


Figure-S3. The block V of heart sections was stained with Masson trichrome and fibrotic foci was stained in blue. Representative images of left ventricle myocardium and capillary myocardium were shown.