

Figure S1. Kaplan-Meier curves for overall survival (A) and disease-free survival for CR/CRi/MLFS patients (B) subdivided by according to the number of preceding lines of salvage therapies (0-2) for FLAG-Eto treated patients.

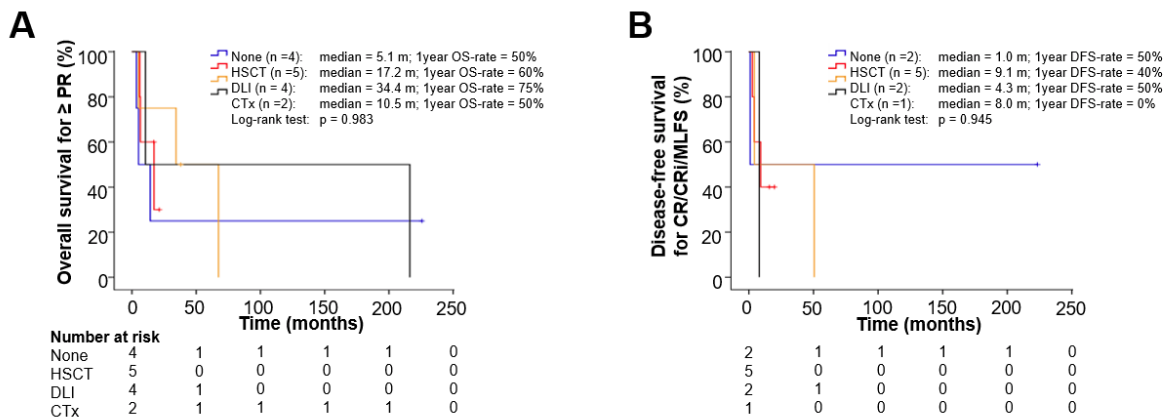


Figure S2. Kaplan-Meier curves for overall survival for patients who achieved at least partial remission and disease-free survival for CR/CRi/MLFS patients subdivided according to the applied postremission treatment for FLAG-Eto treated patients. CTx, chemotherapy; DLI, donor lymphocyte infusion; HSCT, hematopoietic stem cell transplantation.

Table S1. CR/CRi/MLFS-rate in subgroups for FLAG-Eto (univariate analysis)

	CR/CRi/MLFS	No CR/CRi/MLFS	p-value
Age [years] at relapse			
Mean +/- SD	52 +/- 12	55 +/- 10	0,476
≤ 60, n (%)	10/24 (41,7)	14/24 (58,3)	1,000
> 60, n (%)	4/11 (36,4)	7/11 (63,6)	
Gender, n (%)			
Male	7/18 (38,9)	11/18 (61,1)	0,890
Female	7/17 (41,2)	10/17 (58,8)	
Etiology, n (%)			
De novo	11/28 (39,3)	17/28 (60,7)	1,000
Secondary	3/7 (42,9)	4/7 (57,1)	
Cytogenetic risk group at diagnosis, n (%)			
Favorable	2/4 (50)	2/4 (50)	0,911
Intermediate	8/22 (36,4)	14/22 (63,6)	
Unfavorable	3/7 (42,9)	4/7 (57,1)	
Blood counts at relapse			
WBC [1/nl]			
median (range)	3,60 (0,38-12,21)	6,96 (1,34-94,13)	0,069
< 10, n (%)	10/24 (41,7)	14/24 (58,3)	0,372
≥ 10, n (%)	1/7 (14,3)	6/7 (85,7)	
Plt [1/nl]			
median (range)	49,0 (10,0-272,0)	28,0 (1,0-427,0)	0,470
< 50, n (%)	6/19 (31,6)	13/19 (68,4)	0,705
≥ 50, n (%)	5/12 (41,7)	7/12 (58,3)	
Hb [g/dl]			
median (range)	10,10 (8,40-12,90)	10,15 (7,40-15,80)	0,679
< 10, n (%)	5/13 (38,5)	8/13 (61,5)	1,000
≥ 10, n (%)	6/18 (33,3)	12/18 (66,7)	
LDH [U/l]			
median (range)	327 (176-4562)	421 (92-2826)	0,322
< 250, n (%)	3/7 (42,9)	4/7 (57,1)	0,676
≥ 250, n (%)	8/24 (33,3)	16/24 (66,7)	
Blast percentage in BM at relapse			
median	38 (10-80)	62 (14-91)	0,280
< 50%, n (%)	5/10 (50)	5/10 (50)	0,650
≥ 50%, n (%)	3/10 (30)	7/10 (70)	
Disease status ^a , n (%)			
PIF	2/5 (40)	3/5 (60)	0,271
1 st relapse	9/17 (52,9)	8/17 (47,1)	
≥ 2 nd relapse	3/13 (23,1)	10/13 (76,9)	
Duration [m] of last CR/CRi ^b			
median (range)	10,68 (3,38-35,06)	10,81 (1,48-125,93)	0,894
≤ 12 months, n (%)	5/14 (35,7)	9/14 (64,3)	0,662
> 12 months, n (%)	4/8 (50)	4/8 (50)	
No. of prior relapse-therapies ^a , n (%)			
0	8/13 (61,5)	5/13 (38,5)	0,010
1	6/15 (40,0)	9/15 (60,0)	
2	0/7 (0,0)	7/7 (100,0)	
Previous allo-HSCT, n (%)			
yes	4/16 (25)	12/16 (75)	0,096
no	10/19 (52,6)	9/19 (47,4)	

^a prior to 1st cycle of FLAG-Eto^b duration of last CR/CRi prior to Flag-Eto; only measured in patients, who achieved a CR/CRi prior to FLAG-Eto**Abbreviations**

allo-HSCT, allogeneic hematopoietic stem cell transplantation; BM, bone marrow; CR, complete remission; CRi, CR with incomplete hematologic recovery; Hb, hemoglobin; LDH, lactat-dehydrogenase; MLFS, morphologic leukemia-free state; PIF, primary induction failure; Plt, platelets; SD, standard deviation; WBC, white blood cell count

Table S2. Overall survival (OS) in subgroups for FLAG-Eto (univariate analysis)

	n	OS [m], median (95%-CI)	1-year-rate OS, % (95%-CI)	p-value
Response to therapy				
CR/CRi/MLFS	14	14,26 (3,0-25,5)	57,1 (31,2-83,0)	< 0,0001
PR	2	5,13 (n/a)	50,0 (0,0-100,0)	
BLR	5	3,09 (2,0-4,2)	40,0 (0,0-82,9)	
TF	14	2,17 (1,1-3,3)	0,0 (0,0-0,0)	
Postremission therapy ^a				
Allo-HSCT	5	17,15 (0,65-33,7)	60,0 (17,1-100,0)	0,983
Donorlymphocytes infusion	4	34,37 (0,0-75,0)	75,0 (32,5-100,0)	
Chemotherapy	2	10,51 (n/a)	50,0 (0,0-100,0)	
None	4	5,09 (0-15,6,0)	50,0 (1,0-99,0)	
Age [years] at relapse				
≤ 60	25	6,08 (3,8-8,3)	34,1 (15,1-53,1)	0,981
> 60	11	6,24 (2,3-10,2)	31,8 (26,0-61,0)	
Gender				
Male	18	3,09 (1,2-4,9)	19,0 (0,0-38,0)	0,026
Female	18	11,07 (0,2-21,9)	47,6 (23,9-71,3)	
Etiology				
De novo	29	6,24 (4,5-8,0)	34,9 (16,8-52,9)	0,961
Secondary	7	6,08 (1,7-10,5)	28,6 (0,0-62,1)	
Cytogenetic risk group at diagnosis				
Favorable	4	14,26 (0,0-47,1)	75,0 (32,5-100,0)	0,802
Intermediate	23	6,08 (4,6-7,5)	28,0 (9,2-46,8)	
Unfavorable	7	7,39 (0,0-18,0)	38,1 (0,0-77,1)	
Blood counts at relapse				
WBC [1/nl]				
< 10	24	6,08 (3,4-8,8)	24,0 (5,8-42,2)	0,480
≥ 10	7	5,13 (0,0-11,5)	28,6 (0,0-61,1)	
Plt [1/nl]				
< 50	19	5,09 (2,6-7,6)	28,9 (7,7-50,0)	0,868
≥ 50	12	6,24 (4,0-8,5)	19,0 (0,0-42,5)	
Hb [g/dl]				
< 10	13	10,51 (1,7-19,3)	34,6 (7,6-61,6)	0,406
≥ 10	18	4,37 (1,3-7,4)	18,5 (0,0-37,3)	
LDH [U/l]				
< 250	7	not reached	57,1 (20,4-93,8)	0,072
≥ 250	24	5,13 (3,3-7,0)	14,4 (0,0-29,5)	
Blast percentage in BM at relapse				
< 50%	11	67,38 (0,0-149,6)	54,5 (25,1-83,9)	0,055
≥ 50%	10	5,09 (0,5-9,7)	0,0 (0,0-0,0)	
Disease status ^b				
PIF	6	10,51 (4,7-16,3)	33,3 (0,0-70,9)	0,054
1 st relapse	17	6,57 (3,5-9,6)	41,2 (17,9-64,5)	
≥ 2 nd relapse	13	3,52 (0,6-6,4)	23,1 (0,0-49,6)	
Duration [m] of last CR/CRi ^c				
≤ 12 months	14	3,09 (0,0-8,1)	33,3 (7,6-59,0)	0,595
> 12 months	8	7,39 (4,2-10,6)	45,0 (8,2-81,8)	
No. of relapse-therapies ^b				
0	13	7,39 (0,0-16,1)	38,5 (12,0-65,0)	0,541
1	16	6,08 (4,0-8,2)	34,4 (10,3-58,5)	
2	7	5,13 (0,0-10,4)	19,0 (0,0-51,9)	
Previous allo-HSCT				
yes	16	3,52 (1,2-5,9)	21,4 (0,2-42,6)	0,046
no	20	10,51 (4,2-16,8)	42,9 (20,6-65,2)	

^a only patients with ≥ PR considered

^b prior to 1st cycle FLAG-Eto

^c duration of last CR/CRi prior to FLAG-Eto; only measured in patients, who achieved a CR/CRi prior to FLAG-Eto

Abbreviations: allo-HSCT, allogeneic hematopoietic stem cell transplantation; BLR, blast reduction; BM, bone marrow; CI, confidence interval; CR, complete remission; CRi, CR with incomplete hematologic recovery; Hb, hemoglobin; LDH, lactate-dehydrogenase; MLFS, morphologic leukemia-free state; n/a, not available; PIF, primary induction failure; Plt, platelets; PR, partial remission; TF, treatment failure; WBC, white blood cell count

Table S3. Disease-free survival (DFS) in subgroups for FLAG-Eto (univariate analysis)

	n	DFS [m], median (95%-CI)	1-year-rate DFS, % (95%-CI)	p-value
Postremission therapy				
Allo-HSCT	5	9,13 (0,0-19,8)	40,0 (0,0-82,9)	0,945
Donorlymphocytes infusion	2	4,34 (n/a)	50,0 (0,0-100,0)	
Chemotherapy	1	8,05 (n/a)	0,0 (0,0-0,0)	
None	2	1,02 (n/a)	50,0 (0,0-100,0)	
Age [years] at relapse				
≤ 60	7	9,13 (0,0-21,4)	42,9 (6,2-79,6)	0,704
> 60	3	8,05 (0,0-19,3)	33,3 (0,0-86,6)	
Gender				
Male	5	8,05 (0,0-19,5)	20,0 (0,0-55,1)	0,264
Female	5	50,56 (0,0-122,7)	60,0 (17,1-100,0)	
Etiology				
De novo	7	9,13 (6,4-11,9)	42,9 (6,2-79,6)	0,481
Secondary	3	4,34 (4,1-4,6)	33,3 (0,0-86,6)	
Cytogenetic risk group at diagnosis				
Favorable	0	n/a	n/a	0,849
Intermediate	7	9,13 (0,0-21,9)	42,9 (6,2-79,6)	
Unfavorable	2	4,34 (n/a)	50,0 (0,0-100,0)	
Blood counts at relapse				
WBC [1/nl]				0,996
< 10	8	4,34 (0,0-9,7)	37,5 (4,0-71,0)	
≥ 10	1	9,13 (n/a)	0,0 (0,0-0,0)	
Plt [1/nl]				0,689
< 50	5	9,13 (0,0-19,8)	40,0 (0,0-82,9)	
≥ 50	4	4,34 (0,0-9,6)	25,0 (0,0-67,5)	
Hb [g/dl]				0,544
< 10	3	8,05 (2,1-14,0)	0,0 (0,0-0,0)	
≥ 10	6	4,17 (0,0-32,9)	50,0 (10,0-90,0)	
LDH [U/l]				0,201
< 250	3	not reached	66,7 (13,4-100,0)	
≥ 250	6	4,17 (0,0-10,6)	16,7 (0,0-46,5)	
Blast percentage in BM at relapse				
< 50%	4	50,56 (n/a)	75,0 (32,5-100,0)	0,351
≥ 50%	1	2,69 (n/a)	0,0 (0,0-0,0)	
Disease status ^a				
PIF	1	8,05 (n/a)	0,0 (0,0-0,0)	0,573
1 st relapse	7	50,56 (0,0-121,2)	57,1 (20,4-93,8)	
≥ 2 nd relapse	2	1,02 (n/a)	0,0 (0,0-0,0)	
Duration [m] of last CR/CRi ^b				
≤ 12 months	5	50,56 (0,0-115,2)	60,0 (17,1-100,0)	0,057
> 12 months	2	1,02 (n/a)	0,0 (0,0-0,0)	
No. of relapse-therapies ^a				
0	6	8,05 (0,0-52,4)	50,0 (10,0-90,0)	0,385
1	4	2,69 (0,0-10,6)	25,0 (0,0-67,5)	
2	0	n/a	n/a	
Previous allo-HSCT				
yes	3	4,34 (0,0-9,6)	33,3 (0,0-86,6)	0,350
no	7	9,13 (6,4-11,9)	42,9 (6,2-79,6)	

^a prior to 1st cycle FLAG-Eto^b duration of last CR/CRi prior to FLAG-Eto; only measured in patients, who achieved a CR/CRi prior to FLAG-Eto**Abbreviations**

allo-HSCT, allogeneic hematopoietic stem cell transplantation; BM, bone marrow; CI, confidence interval; CR, complete remission; CRi, CR with incomplete hematologic recovery; Hb, hemoglobin; LDH, lactat-dehydrogenase; n/a, not available; PIF, primary induction failure; Plt, platelets; WBC, white blood cell count