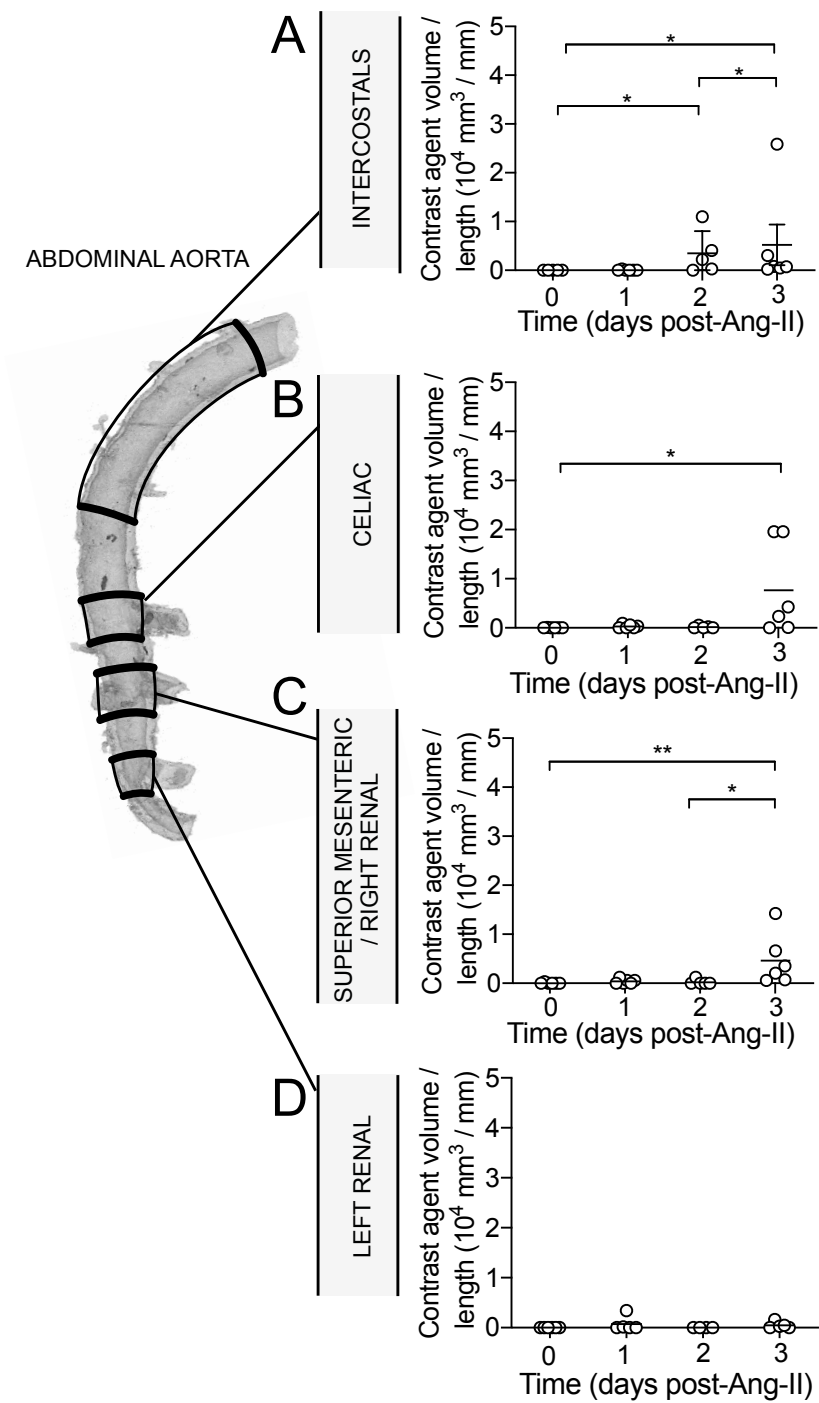


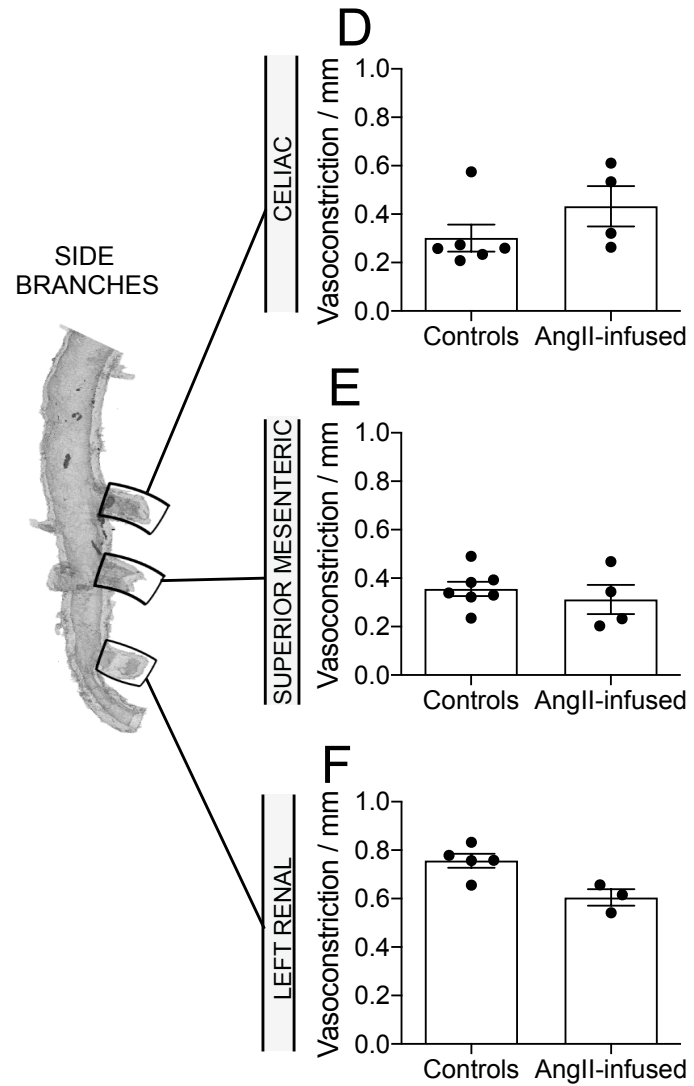
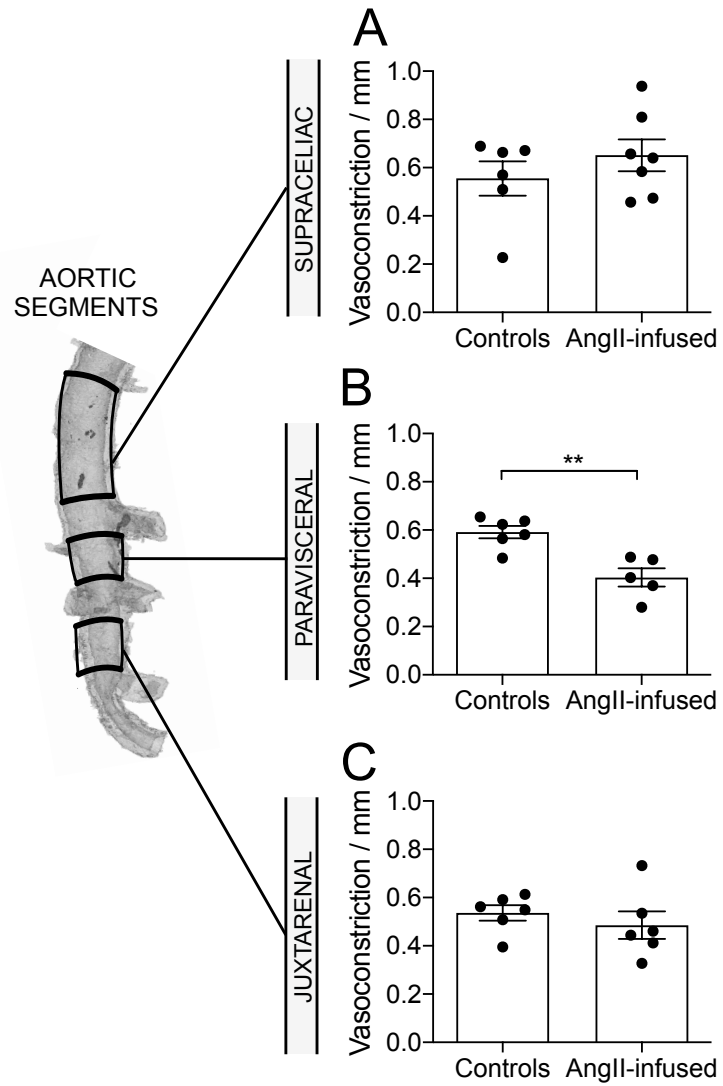
1 **Supplementary Figure S1. Contrast agent infiltration along the abdominal aorta**
2 **after AngII infusion for 1, 2 and 3 days for ApoE^{-/-} mice.** Quantification of the
3 contrast agent infiltrates in different aortic segments: **(A)** intercostal, **(B)** celiac, **(C)**
4 superior mesenteric/right renal and **(D)** left renal in ApoE^{-/-} mice following AngII
5 infusion at the indicated times. Data are expressed as mean \pm SEM and statistical
6 significance was determined by one-way ANOVA followed by Dunnett's multiple
7 comparison. * : $p \leq 0.05$; ** : $p \leq 0.01$, $n=6$ per group except intercostals day 2, where
8 $n=5$.

9

10 **Supplementary Figure S2. Contractions to KCl, normalized to vessels' length.**
11 **(A-C)** Contraction induced by KCl (60 mM) was assessed in abdominal aortic
12 segments and **(D-F)** side branches mounted in the wire myograph system. Data are
13 expressed as mean \pm SEM and statistical significance was determined by unpaired t-
14 test. ** $p \leq 0.01$, $n=5-7$ segments per group. For the AngII-infused celiac, superior
15 mesenteric and left renal groups, length values were only available for $n=3$ and $n=4$ of
16 the tested segments.



Supplementary Figure 1



Supplementary Figure 2