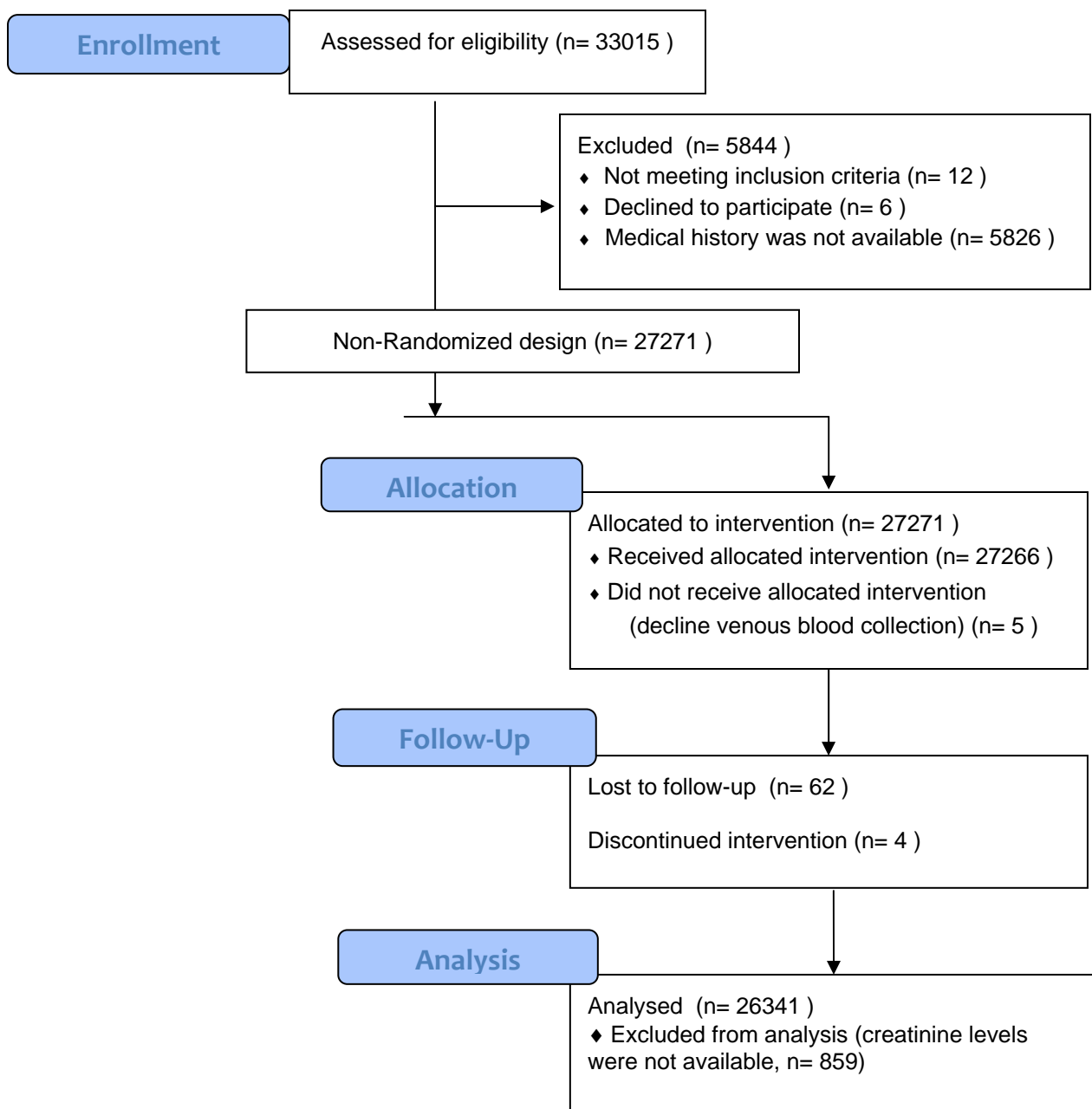


Age and sex specific reference values of estimated GFR in
Chinese population

Supplementary appendix

1. CONSORT 2010 Flow Diagram
2. Supplementary Table 1-4

CONSORT 2010 Flow Diagram



Supplementary Table 1-4

Supplementary Table 1. Estimated GFR in Chinese population with reported comorbidity of the ES-CKD Study

Age (years)	N	Mean±SD	P2.5	Mean - 1.96 SD	P97.5	Mean + 1.96 SD
Young	351	103±31	40	43	160	164
Middle-aged	2422	78±23	34	33	116	123
Elderly	4874	61±18	32	25	96	97
18-24	81	131±26	68	79	173	183
25-29	82	103±31	45	43	150	164
30-34	85	100±28	45	46	135	154
35-39	103	93±26	40	41	132	145
40-44	235	88±26	37	37	126	140
45-49	313	83±26	36	31	118	134
50-54	481	80±23	34	35	115	125
55-59	635	76±23	33	31	111	121
60-64	758	72±20	34	34	104	111
65-69	831	67±20	32	28	101	105
70-74	1091	61±18	31	25	95	97
75-79	1148	61±18	32	25	98	97
≥ 80	1804	56±16	31	25	90	88

Note: Values are given as means (\pm SD), means \pm 1.96 SD, 2.5th and 97.5th percentile; age was shown as years. Young: 18-39 years of age. Middle-aged: 40-64 years of age. Elderly: 65 years or more of age. Abbreviation: GFR, glomerular filtration rate; SD, standard deviation (of eGFR, ml/min/1.73m²); P2.5, 2.5th percentile (of eGFR, ml/min/1.73m²); P97.5, 97.5th percentile (of eGFR, ml/min/1.73m²). Estimated GFR (eGFR): GFR estimated by creatinine-based CKD-EPI equation

Supplementary Table 2. Estimated GFR in Chinese males with reported comorbidity of the ES-CKD Study

Age (years)	<i>N</i>	Mean±SD	P2.5	Mean - 1.96 SD	P97.5	Mean + 1.96 SD
Young	245	104±31	40	44	162	165
Middle-aged	1645	78±23	34	33	116	123
Elderly	2916	62±18	31	26	98	98
18-24	61	133±24	79	86	175	180
25-29	49	104±30	52	46	144	163
30-34	61	101±25	41	52	137	151
35-39	74	91±23	41	46	122	136
40-44	157	91±26	37	39	131	142
45-49	211	83±26	36	31	117	134
50-54	339	79±23	34	34	115	124
55-59	451	76±23	33	31	113	121
60-64	487	73±20	34	35	103	112
65-69	497	68±21	32	27	104	108
70-74	707	61±18	31	25	98	97
75-79	666	63±20	31	25	101	101
≥ 80	1046	59±16	31	27	90	90

Note: Values are given as means (±SD), means ± 1.96 SD, 2.5th and 97.5th percentile; age was shown as years. Young: 18-39 years of age. Middle-aged: 40-64 years of age. Elderly: 65 years or more of age. Abbreviation: GFR, glomerular filtration rate; SD, standard deviation (of eGFR, ml/min/1.73m²); P2.5, 2.5th percentile (of eGFR, ml/min/1.73m²); P97.5, 97.5th percentile (of eGFR, ml/min/1.73m²). Estimated GFR (eGFR): GFR estimated by creatinine-based CKD-EPI equation

Supplementary Table 3. Estimated GFR in Chinese females with reported comorbidity of the ES-CKD Study

Age (years)	N	Mean±SD	P2.5	Mean - 1.96 SD	P97.5	Mean + 1.96 SD
Young	106	101±33	32	36	147	166
Middle-aged	777	77±24	37	30	115	124
Elderly	1958	60±18	32	24	94	96
18-24	20	121±30	67	62	162	179
25-29	33	102±32	44	39	148	165
30-34	24	100±31	42	39	139	161
35-39	29	99±33	39	33	133	164
40-44	78	83±28	38	29	121	137
45-49	102	82±26	37	30	119	133
50-54	142	80±23	36	35	110	125
55-59	184	77±22	36	34	108	120
60-64	271	70±21	36	30	106	111
65-69	334	64±20	34	26	98	103
70-74	384	61±18	31	25	93	97
75-79	482	59±17	32	25	93	92
≥ 80	758	54±16	31	22	87	85

Note: Values are given as means (\pm SD), means \pm 1.96 SD, 2.5th and 97.5th percentile; age was shown as years. Young: 18-39 years of age. Middle-aged: 40-64 years of age. Elderly: 65 years or more of age. Abbreviation: GFR, glomerular filtration rate; SD, standard deviation (of eGFR, ml/min/1.73m²); P2.5, 2.5th percentile (of eGFR, ml/min/1.73m²); P97.5, 97.5th percentile (of eGFR, ml/min/1.73m²). Estimated GFR (eGFR): GFR estimated by creatinine-based CKD-EPI equation

Supplementary Table 4. Measured and Estimated GFR in non-diseased Chinese Population in ES-CKD Study

Age	sex	N	GFR	Mean±SD	P2.5	P97.5
Young	male	9	mGFR	106±28	67	136
			eGFRcr	108±25	65	129
			eGFRcys	109±41	47	156
			eGFRcr-cys	110±36	58	151
	female	5	mGFR	123±8	117	136
			eGFRcr	98±15	59	121
			eGFRcys	113±21	88	137
			eGFRcr-cys	118±22	88	143
Middle-aged	male	27	mGFR	85±26	46	125
			eGFRcr	87±25	43	130
			eGFRcys	83±29	32	133
			eGFRcr-cys	87±26	40	130
	female	40	mGFR	76±24	35	112
			eGFRcr	89±24	40	118
			eGFRcys	73±32	26	130
			eGFRcr-cys	77±31	28	128
Elderly	male	21	mGFR	56±21	25	97
			eGFRcr	62±21	29	91
			eGFRcys	51±22	24	94
			eGFRcr-cys	58±20	29	89
	female	8	mGFR	50±15	34	67
			eGFRcr	62±30	32	99
			eGFRcys	42±28	13	77
			eGFRcr-cys	49±32	18	85
All of above		106	mGFR	76±27	33	128
			eGFRcr	84±29	31	127
			eGFRcys	73±35	17	138
			eGFRcr-cys	78±33	21	135

Note: Values are given as means (±SD), 2.5th and 97.5th percentile. Young: 18-39 years of age. Middle-aged: 40-64 years of age. Elderly: 65 years or more of age. Abbreviation: mGFR, measured glomerular filtration rate by Gates method; SD, standard deviation (of eGFR,

ml/min/1.73m²); P2.5, 2.5th percentile (of eGFR, ml/min/1.73m²); P97.5, 97.5th percentile (of eGFR, ml/min/1.73m²). eGFRcr: GFR estimated by creatinine-based CKD-EPI equation; eGFRcys: GFR estimated by cystatin C-based CKD-EPI equation; eGFRcr-cys estimated by both creatinine and cystatin C-based CKD-EPI equation.