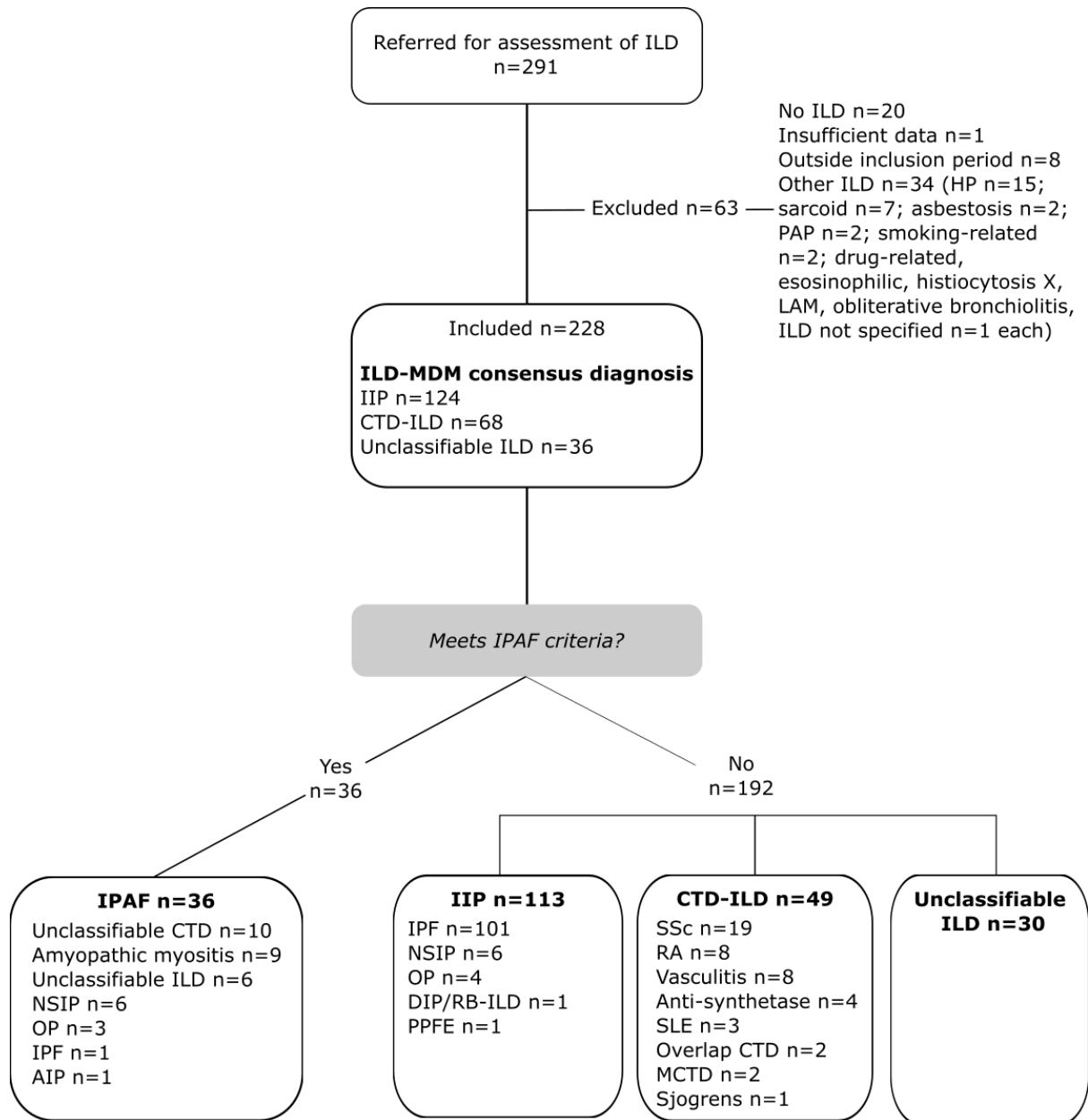


SUPPLEMENTARY INFORMATION

Figure S1. Study flowchart



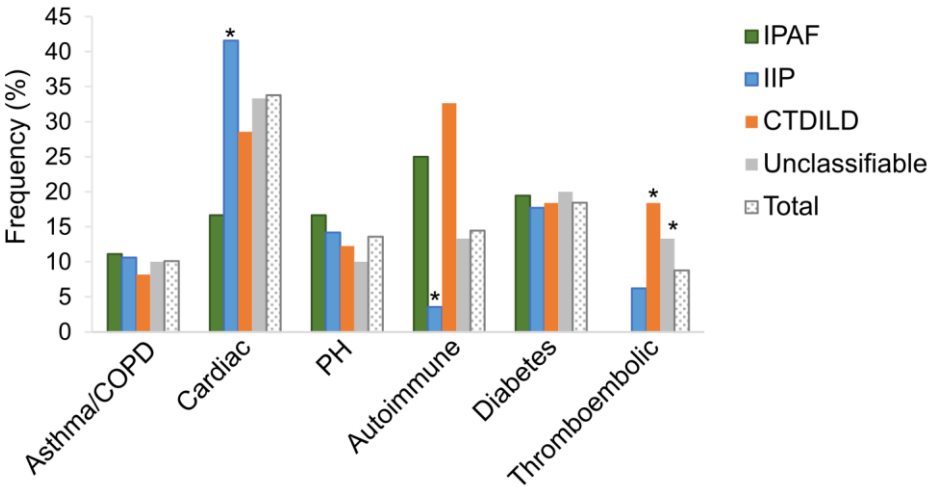
Abbreviations: ILD interstitial lung disease, PAP pulmonary alveolar proteinosis; LAM lymphangiomyomatosis; ILD-MDM ILD-multidisciplinary meeting; IIP idiopathic interstitial pneumonia; CTD-ILD connective tissue disease associated ILD; IPAF idiopathic pneumonia with autoimmune features; NSIP non-specific interstitial pneumonia; OP organising pneumonia; IPF idiopathic pulmonary fibrosis; AIP acute interstitial pneumonitis; DIP/RB-ILD desquamative interstitial pneumonia/respiratory bronchiolitis ILD; PPFE pleuroparenchymal fibroelastosis; SSc systemic sclerosis; RA rheumatoid arthritis; SLE systemic lupus erythematosus; MCTD mixed connective tissue disease

Table S1. Presenting symptoms of patients by ILD group

	IPAF n=36	IIP n=113	CTD-ILD n=49	Unclassifiable n=30	Total n=228
Dyspnoea	18 (50)	84 (74.3)*	24 (49.0)	15 (51.7)	141 (62.1)
Cough	17 (47.2)	58 (51.3)	16 (32.7)	11 (37.9)	102 (44.9)
CTD related	13 (36.1)	0 (0) [†]	25 (51.0)	1 (3.5) [†]	39 (17.3)
Lethargy	4 (11.1)	4 (3.5)	1 (2.0)	1 (3.5)	10 (4.4)
Weight loss	1 (2.8)	6 (5.3)	0 (0)	2 (6.9)	9 (4.0)
Asymptomatic	2 (5.6)	8 (7.1)	0 (0)	3 (10.3)	13 (5.7)

*p<0.001 compared with IPAF; [†]p<0.05 compared with IPAF

Figure S2. Major comorbidities by ILD group



*p<0.05 when compared with IPAF

Abbreviations: COPD chronic obstructive pulmonary disease; PH pulmonary hypertension; IIP idiopathic interstitial pneumonia; CTD-ILD connective tissue disease associated ILD; IPAF interstitial pneumonia with autoimmune features