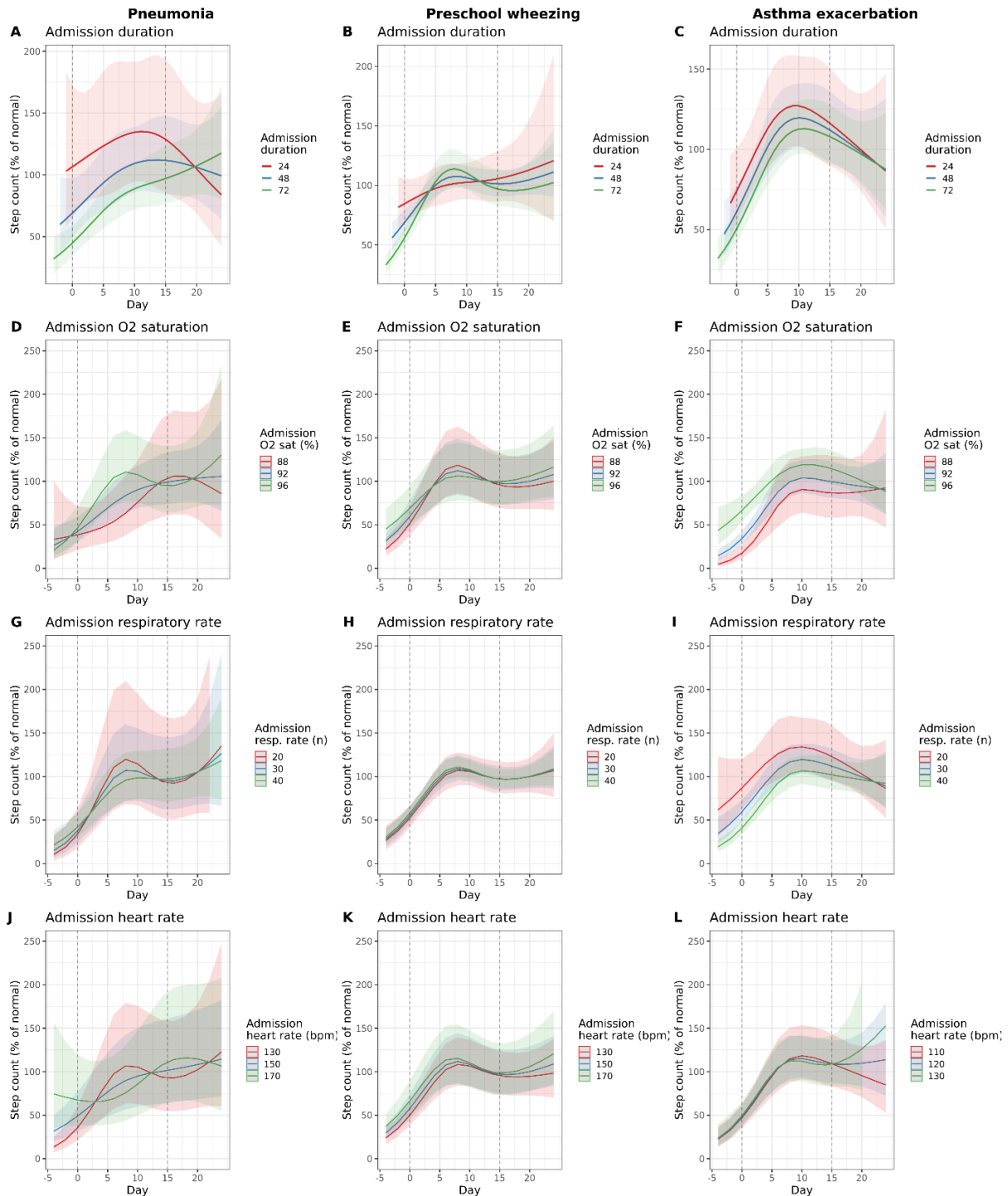


Supplementary Figure S6 – Influence of admission characteristics



Estimated effects of baseline admission variable on the recovery trajectory for CAP patients (left column), PW patients (central column), and AE patients (right column). The first row shows the influence of admission duration (1,2 or 3 days), the second row displays the effect varying of admission O² saturation (88%, 92%, 96%). Row 3 and 4 display the influence of admission respiratory rate and heart rate, respectively.