

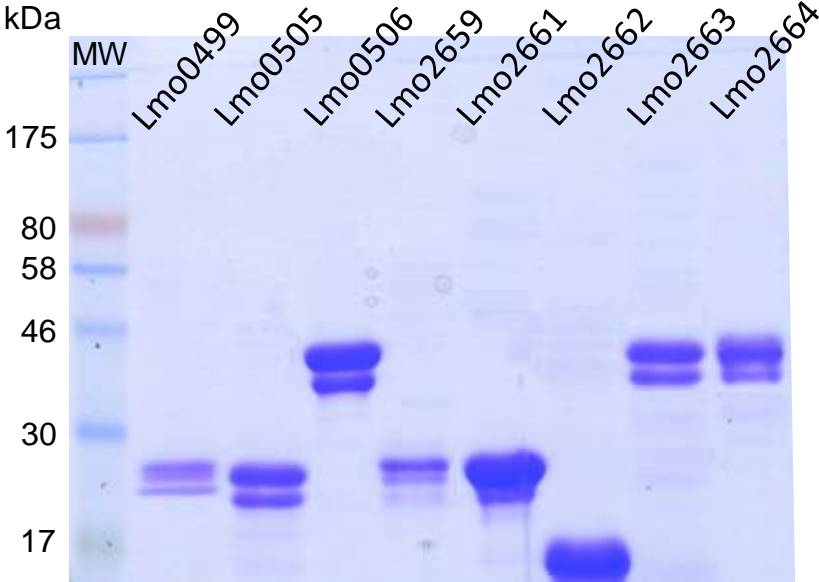
**Table S1.** List of oligonucleotides used in this study.

Name	Sequence 5' - 3'	Used for
DpqE	GTTCTGAGGTCATTACTGG	Sequencing pQE30 inserts
FpqE	CGGATAACAATTTACACAG	Sequencing pQE30 inserts
pMAD_5'	GCGAGAAGAATCATAATGGG	Sequencing pMAD inserts
pMAD_3'	GTTACACATTAAGTAGACAG	Sequencing pMAD inserts
Lmo_0500_EXT_5	GTGATGGATGGTGTTTTTG	<i>lmo0500</i> verification
Lmo_0500_EXT_3	CTTGCGCAGTTCCCACTCGC	<i>lmo0500</i> verification
lmo_0500_F1-5_BamHI	GCAGGATCCTACTAGATATTCATTTAGC <sup>a</sup>	<i>lmo0500</i> construction
lmo_0500_F1-3_SalI	AGGAGATTGTTAGTCGACTAAATGCATTTTCTCTCACC	<i>lmo0500</i> construction
lmo_0500_F2-5_SalI	AAAATGCATTTAGTCGACTAAACAATCTCCTTCTCATGTTG	<i>lmo0500</i> construction
lmo_0500_F2-3_NcoI	TAACCATGGCGCTACTTTTAAATCACG	<i>lmo0500</i> construction
Lmo0501 ext5	CATTCTTAAGCACCGAACCC	<i>lmo0501</i> verification
Lmo0501 ext3	CAAATATGGTAGTAATTC	<i>lmo0501</i> verification
Lmo0501 BamHI	TCTGGATCCCAGAAGTAAAACATTTTCA	<i>lmo0501</i> construction
Lmo0501 NcoI	CTTCCATGGTGC GGCGGATTTCCATAAG	<i>lmo0501</i> construction
Lmo0503 ext5	CAAAC TATTAATAAATAAAC	<i>lmo0503</i> verification
Lmo0503 ext3	CCAGTCTACAAAACCTGA	<i>lmo0503</i> verification
Lmo0503 BamHI	TTAGGATCCTTTAAAGAAGAGATGGTTC	<i>lmo0503</i> construction
Lmo0503 NcoI	GTTCCATGGCGGAAAGAACATCTCCCG	<i>lmo0503</i> construction
lmo0508-EXT-5	GCGAGCTTACTGTATGGGG	<i>lmo0508</i> verification
lmo0508-EXT-3	AGCTGCATGTAAATCTACTG	<i>lmo0508</i> verification
lmo0508-F1-5-BamHI	GCAGGATCCCAGGAAAAGAGTGGCAAAC	<i>lmo0508</i> construction
lmo0508-F1-3-SalI	GAATACCTCCAGTCGACGAATAATATCCATTTTGTGC	<i>lmo0508</i> construction
lmo0508-F2-5-SalI	GGATATTATTCTGTCGACTGGAGGTATTCTATAATTGC	<i>lmo0508</i> construction
lmo0508-F2-3-NcoI	CGACCATGGGATTTGCCATTAATTTGGCG	<i>lmo0508</i> construction
lmo_2660_EXT_5	CAATACAGAAATCCCTCTAGAC	<i>lmo2660</i> verification
lmo_2660_EXT_3	GCAACGAGGATATCTACGCCCGC	<i>lmo2660</i> verification
lmo_2660_F1-5_BamHI	CAGGATCCGGCCCGGTGAAACCGGAATA	<i>lmo2660</i> construction
lmo_2660_F1-3_SalI	GAATGTCATACGTCGACTTTCAAACGGTCATCTCCC	<i>lmo2660</i> construction
lmo_2660_F2-5_SalI	CGTTTTGAAAGTCGACGTATGACATTCGTAGCGCCA	<i>lmo2660</i> construction
lmo_2660_F2-3_NcoI	AAACCATGGCGGCGCCAATTATCTAGAT	<i>lmo2660</i> construction
lmo_2665_EXT_5	AATGAACCTCACAGCCAGC	<i>lmo2665</i> verification
lmo_2665_EXT_3	GCATCGATACAGCAAGTGGC	<i>lmo2665</i> verification
lmo_2665_F1-5_BamHI	CTGGGATCCAAGATAAAGACAATGTAGC	<i>lmo2665</i> construction
lmo_2665_F1-3_SalI	GAAGTTACCACGTCGACACTCCTGACAGAAGTGTATC	<i>lmo2665</i> construction
lmo_2665_F2-5_SalI	TCTGTCAGGAGTGTGACGTGGTAACTTCTTTAACTGGG	<i>lmo2665</i> construction

lmo_2665_F2-3_NcoI	<i>CGACCATGGAT</i> CAAGGTCGCCGATAGAA	<i>lmo2665</i> construction
Lmo0499-5_BamHI	AC <i>GGGATCC</i> ATGAAAATGATTGCG	Lmo0499 purification
Lmo0499-3_SalI	TCC <i>GTCTGACT</i> CACCTTTCTTGATA	Lmo0499 purification
Lmo0505-5_BamHI	AC <i>GGGATCCG</i> TGGCAAAAATAGTTC	Lmo0505 purification
Lmo0505-3_SalI	TCC <i>GTCTGACT</i> CATTCTGTAAAAC	Lmo0505 purification
ForPDIBamHI	TTTT <i>GGATCC</i> ATGAAAGCTTTAAAATTATATGG	Lmo0506 purification
RevPDISalI	CTTT <i>GTCTGACT</i> TAAAATCCCCCTATCATTC	Lmo0506 purification
lmo2659_5_BamHI	CG <i>GGATCC</i> ATGACATTCGTAGCG	Lmo2659 purification
lmo2659_3_SalI	CC <i>GTCTGACT</i> TATTTTTTAAGCC	Lmo2659 purification
lmo2661_5_BamHI	CG <i>GGATCC</i> ATGAGGAAGATAGC	Lmo2661 purification
lmo2661_3_SalI	CC <i>GTCTGACT</i> TACACATGTTTTTC	Lmo2661 purification
lmo2662_5_BamHI	TAG <i>GATCC</i> ATGAAATTAACAATTGG	Lmo2662 purification
lmo2662_3_PstI	TCCT <i>GCAGTCA</i> CTTTCTTTTCGAG	Lmo2662 purification
ForPDIBamHI	GAC <i>GGGATCC</i> TTGAAAGCAGTAGTAAAAC	Lmo2663 purification
RevPDISalI	CAGC <i>GTCTGACT</i> CCATTATTAAGATTTTAC	Lmo2663 purification
lmo2664_5_BamHI	GCG <i>GATCC</i> ATGAGAGCAGCTGTG	Lmo2664 purification
lmo2664_3_SalI	TGGT <i>CTGACT</i> TAAATCGTCACCTTTCTG	Lmo2664 purification
qPCR_0500_FOR	GGCACATGAAGCTGGTACTA	<i>lmo0500</i> qRT-PCR
qPCR_0500_REV	TGTTTCGCTGCACTCATTCT	<i>lmo0500</i> qRT-PCR
Q0500_0501_FOR	CAGTAGAAGCAATTCGTGTC	<i>lmo0500-0501</i> qRT-PCR
Q0500_0501_REV	CAGATACATGCGTCTCCC	<i>lmo0500-0501</i> qRT-PCR
qPCR_0501_FOR	GCTTAATCGATACTGCTTTTCATATTG	<i>lmo0501</i> qRT-PCR
qPCR_0501_REV	TCGAATAAGTCTAAGCATGTGAGGA	<i>lmo0501</i> qRT-PCR
qPCR_0502_FOR	ACTGTTGAAAAAATCGCCG	<i>lmo0502</i> qRT-PCR
qPCR_0502_REV	CACCGAGAGTTCCATGC	<i>lmo0502</i> qRT-PCR
qPCR_0508_FOR	CTTACCACAAATTCAAACCTACCG	<i>lmo0508</i> qRT-PCR
qPCR_0508_REV	CACCACCAATAATTAAGCCCATA	<i>lmo0508</i> qRT-PCR
qPCR_2665_FOR	AGAACACAACCTATGGTAGAAG	<i>lmo2665</i> qRT-PCR
qPCR_2665_REV	GAATAGTTTCTGGGTCAACG	<i>lmo2665</i> qRT-PCR
actA-F	AGCAGATGAGTCTTACCACA	<i>actA</i> qRT-PCR
actA-R	CCCTGCACTTTTATCAACAATC	<i>actA</i> qRT-PCR

<sup>a</sup>Restriction sites are in italic type.

**Fig. S1.** SDS/polyacrylamide gel electrophoresis with eighth purified proteins encoded by the two D-arabitol-induced regions of *L. monocytogenes*. The indicated proteins were loaded on a 0.1% SDS/15% polyacrylamide gel and separated by electrophoresis. MW stands for molecular weight standards.



**Fig. S2.** Expression of a  $\Phi(\text{Phly-gus})$  reporter gene fusion of *L. monocytogenes* strain AML73 during growth on solid MM complemented with various carbon sources and containing X-GlcA. The formation of blue color indicates expression of the  $\Phi(\text{Phly-gus})$  fusion ( $\beta$ -D-glucuronidase activity). As previously reported, the expression of the  $\Phi(\text{Phly-gus})$  fusion in strain AML73 is strongly repressed by glucose, but derepressed during growth on glycerol. When grown in the presence of D-arabitol, only strain AML73, but not a *prfA* mutant derived from it exhibited  $\beta$ -D-glucuronidase activity; maximal activity was reached around 20 mM D-arabitol. However, virulence gene expression was reproducibly strongly repressed by 50 mM D-arabitol.

