

Supplementary Appendix

This appendix has been provided by the authors to give readers additional information about their work.

Supplement to: Bushinsky DA et al., *Patiromer Decreases Serum Potassium and Phosphate in Patients on Hemodialysis*

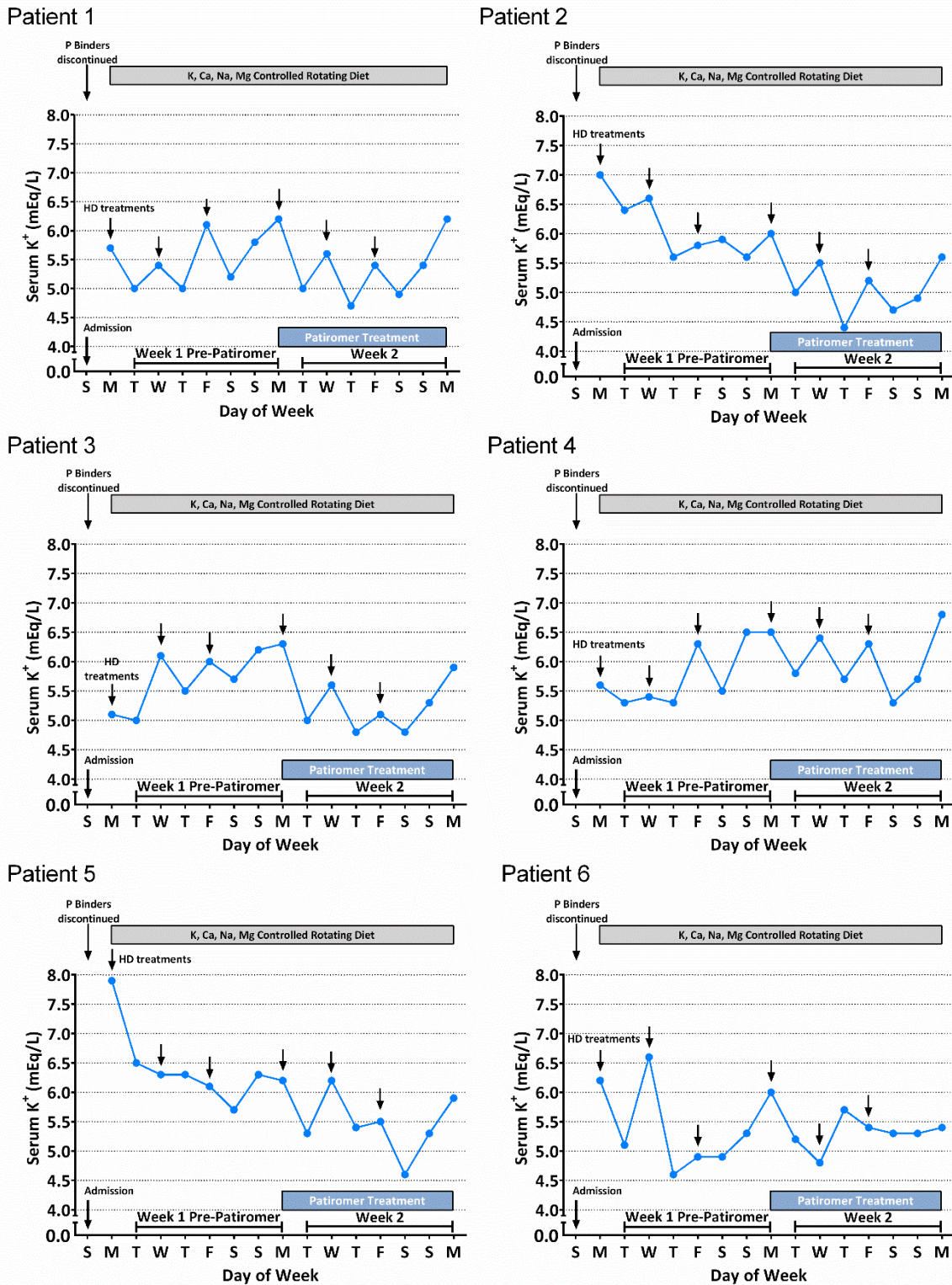
Table of Contents

Supplementary Figure 1. Serum K values over time during the pretreatment week and the patiromer treatment week by patient. Hemodialysis (HD) treatments are indicated by *arrows*.... 3

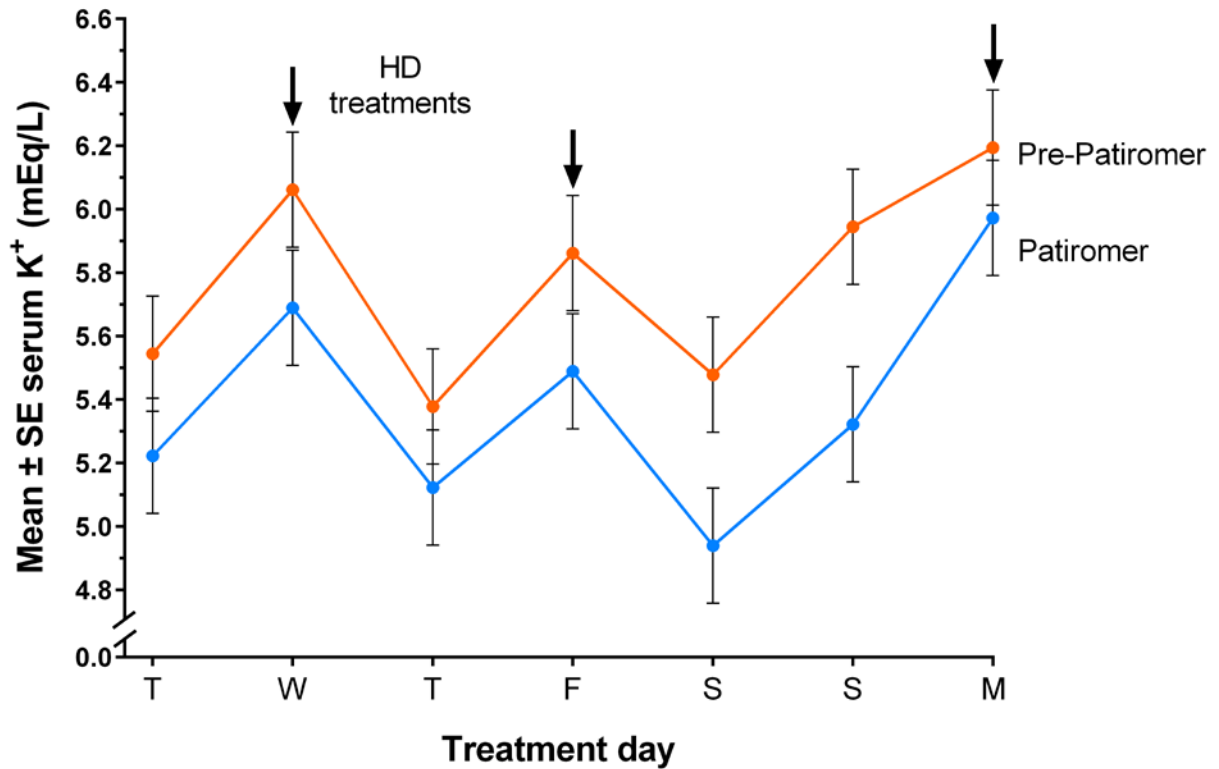
Supplementary Figure 2. Effect of ongoing patiromer treatment on the separation between the serum K curves during the pre-patiromer vs the patiromer treatment weeks. Hemodialysis (HD) treatments are indicated by *arrows*. A mixed-effect model with repeated measures of the potassium on corresponding days shows an early and sustained separation between the pretreatment period values and the patiromer treatment values..... 5

Supplementary Figure 3. Effect of ongoing patiromer treatment on the separation between the serum P curves during the pre-patiromer vs the patiromer treatment weeks. Hemodialysis (HD) treatments are indicated by *arrows*. A mixed-effect model with repeated measures of the phosphate on corresponding days shows an increasing separation between the pretreatment period values and the patiromer treatment values as the week progresses. 5

Supplementary Figure 1. Serum K values over time during the pretreatment week and the patiromer treatment week by patient. Hemodialysis (HD) treatments are indicated by short *arrows*.



Supplementary Figure 2. Effect of ongoing patiromer treatment on the separation between the serum K curves during the pre-patiromer vs the patiromer treatment weeks. Hemodialysis (HD) treatments are indicated by arrows. A mixed-effect model with repeated measures of the potassium on corresponding days shows an early and sustained separation between the pretreatment period values and the patiromer treatment values. Narrowing of the separation over the long interdialytic period may reflect continuing K equilibration from intracellular stores.



Supplementary Figure 3. Effect of ongoing patiromer treatment on the separation between the serum P curves during the pre-patiromer vs the patiromer treatment weeks. Hemodialysis (HD) treatments are indicated by *arrows*. A mixed-effect model with repeated measures of the phosphate on corresponding days shows an increasing separation between the pretreatment period values and the patiromer treatment values as the week progresses.

