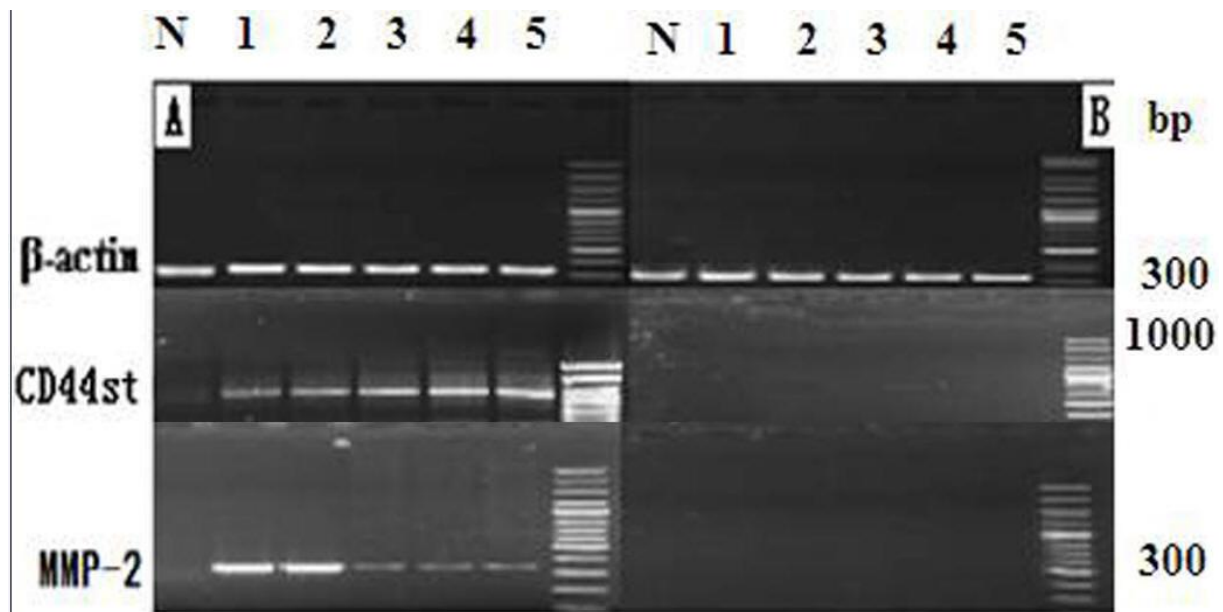
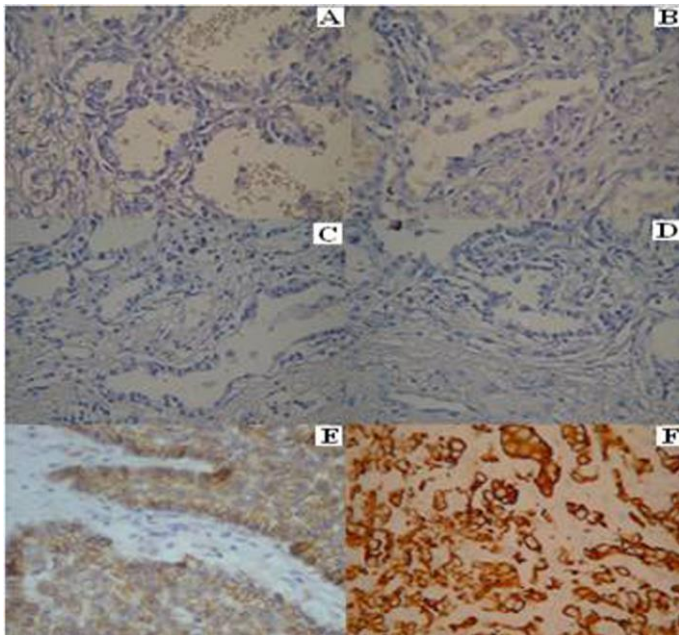


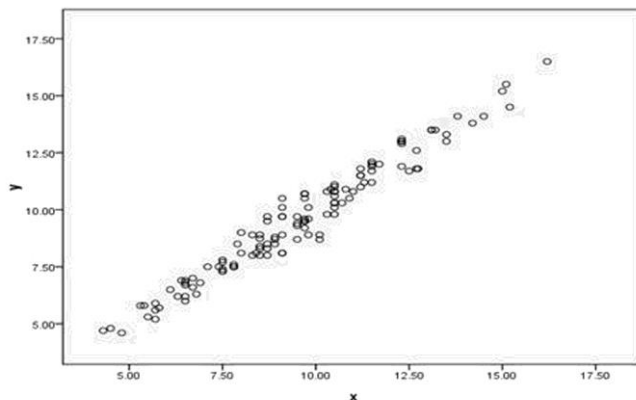
Supplementary Fig. 1. CD44st solubility curve and amplification curve of NSCLC tissue.



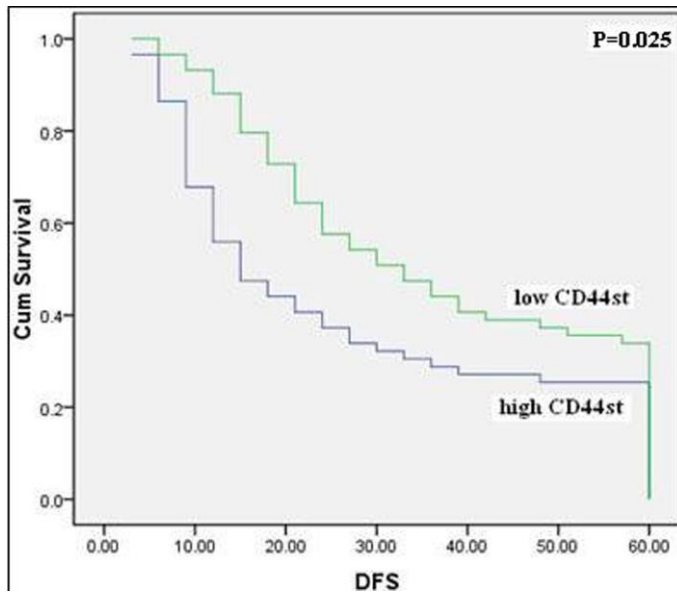
Supplementary Fig. 2. Expression of CD44st and MMP2 in NSCLC tissues. Tissue specimen from 5 different patients (1--5); N = Blank control; A = cancer tissues; B = pericarcinoma tissues.



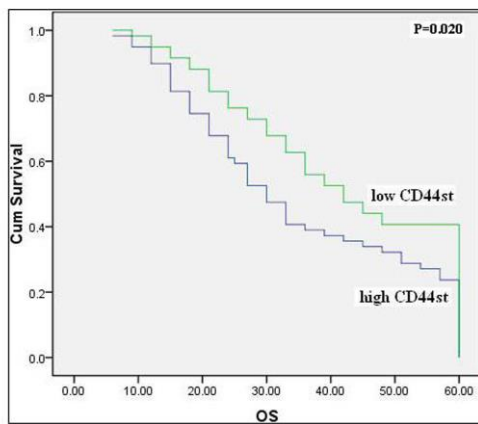
Supplementary Fig. 3. Expression of CD44 and MMP2 proteins in NSCLC tissues. **A** CD44-negative tissue from lung adenocarcinoma (blank control $\times 400$); **B** MMP2-negative tissue from lung adenocarcinoma (blank control $\times 400$); **C** CD44-negative tissue from lung adenocarcinoma (negative control $\times 400$); **D** MMP2-negative tissue from adenocarcinoma (negative control $\times 400$); **E** CD44-positive tissue from lung adenocarcinoma; **F** MMP2-positive tissue from lung adenocarcinoma.



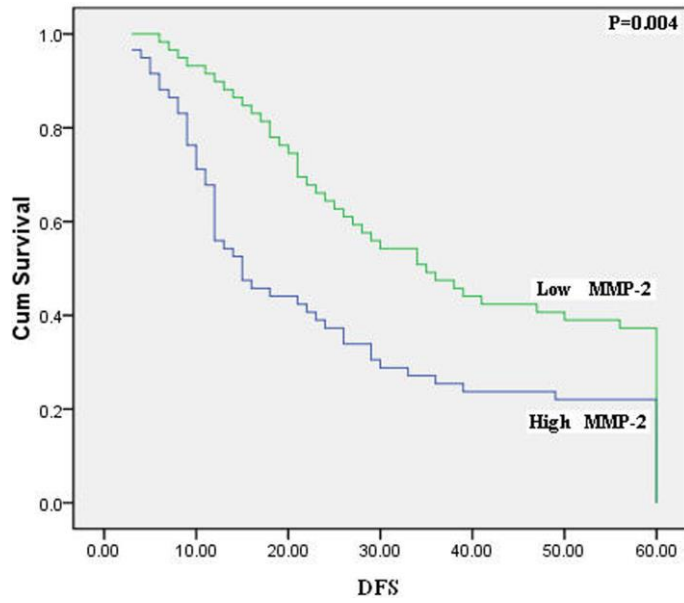
Supplementary Fig. 4. Expression of CD44st and MMP2 mRNAs in NSCLC tissues.



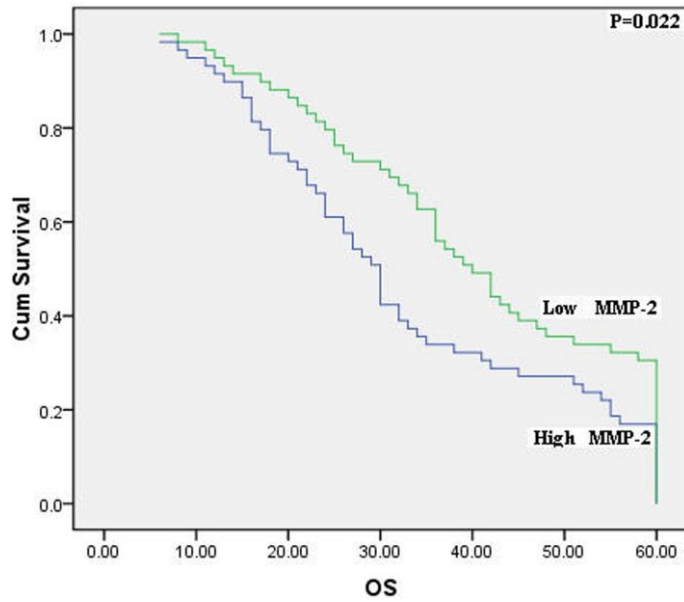
Supplementary Fig. 5. DFS of NSCLC patients stratified by CD44st mRNA expression.



Supplementary Fig. 6. OS of NSCLC patients stratified by CD44st mRNA expression.



Supplementary Fig. 7. DFS of NSCLC patients stratified by MMP-2 mRNA expression.



Supplementary Fig. 8. OS of NSCLC patients stratified by MMP-2 mRNA expression.