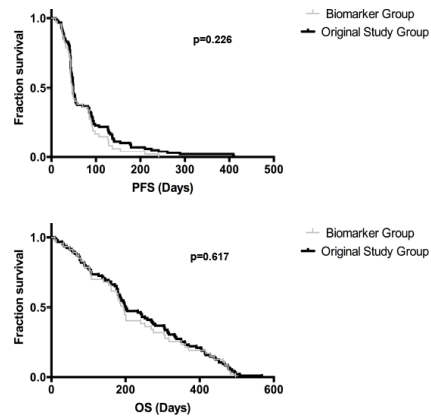


**Suppl. Fig. 1.** **a** Distribution of genomic biomarkers in patients including all tumor histologies. Absolute numbers of patients tested positive for mutations in the genes coding for KRAS, BRAF, EGFR and PIK3CA. **b** Distribution of immunohistochemically detected biomarkers markers in patients including all tumor histologies. Numbers of patients scoring positive by IHC for the biomarkers phospho-ERK (T202/Y204), PTEN, phospho-AKT (S473), HER2 and ALK. **c** Distribution of genomically mutated and immunohistochemically detected biomarkers in patients with adenocarcinoma. Absolute numbers of adenocarcinoma patients tested positive for mutations in KRAS, BRAF, EGFR and PIK3CA and patients that scored positive by IHC for the biomarkers phospho-ERK (T202/Y204), PTEN, phospho-AKT (S473), HER2 and ALK. **d** Progression free survival (PFS) and KRAS mutation status. Shown are progression free survival times of all patients analyzed (all histologies) with KRAS-mutated or KRAS-wildtypic tumors and of a subgroup harboring non-squamous tumors. **e** Progression-free survival under PLK1 inhibitor therapy in biomarker subgroups. Depicted are PFS times of patients classified into biomarker subgroups. Patients positive for multiple biomarkers are marked.



**Suppl. Fig. 2.** PFS and overall survival (OS) original study group and biomarker group. Shown are PFS and OS times of patients of the original study group and the biomarker group analyzed here.

**Suppl. Table 1.** Patient demographics

	Original study group	Biomarker study group	p (Mann-Whitney test)
N (%)	95 (100)	47 (49.5)	---
Gender (n, %)			
Male	67 (70.5)	33 (70.2)	ns (p=0.667)
Female	28 (29.5)	14 (29.8)	
Age (yrs), n (%)			
>70	23 (24)	7 (14.9)	
Median	64	65	ns (p=0.427)
Range	38-81	41-81	
ECOG performance status, n (%)			
0	32 (34)	20 (42.6)	
1	61 (64)	25 (53.2)	ns (p=0.5)
2	2 (2)	2 (4.3)	
Smoking status, n (%)*			
Currently smoking	12 (13)	3 (6.4)	
Ex-smoker	75 (79)	39 (83)	ns (p=0.400)
Never-smoker	7 (7)	4 (8.5)	
Histology, n (%)			
Adenocarcinoma	53 (56)	25 (53.2)	
Squamous cell carcinoma	30 (32)	16 (34)	ns (p=0.287)
Large cell carcinoma	6 (6)	3 (6.4)	
Other	6 (6)	3 (6.4)	
Previous chemotherapy, n (%)			
First line only	68 (72)	35 (74.5)	ns (p=0.667)
Second line	27 (28)	12 (25.5)	
Previous radiotherapy, n (%)			
No	40 (42)	19 (40.4)	ns (p=0.333)
Yes	55 (58)	28 (59.6)	

Shown are the patient demographics (absolute numbers and percentages) of the original study group and the biomarker study group analyzed here.

**Suppl. Table 2.** Oncogene mutations detected

Oncogene	Mutations detected	Mutation frequency % (n)
<i>KRAS</i> (Exons 2, 3)	G12C, G12D, G12V	14.9 (7/26)
<i>EGFR</i> (Exons 19, 21)	DelEx19 A746-750, A750G	4.3 (2/26)
<i>BRAF</i> (Exon 15)	S605N	2.1 (1/26)
<i>PIK3CA</i> (Exons 10, 21)	E545A, Q1033STOP, P539S	6.4 (3/26)

Depicted are mutations in different oncogenes detected in patient's tumors (absolute numbers and percentages).