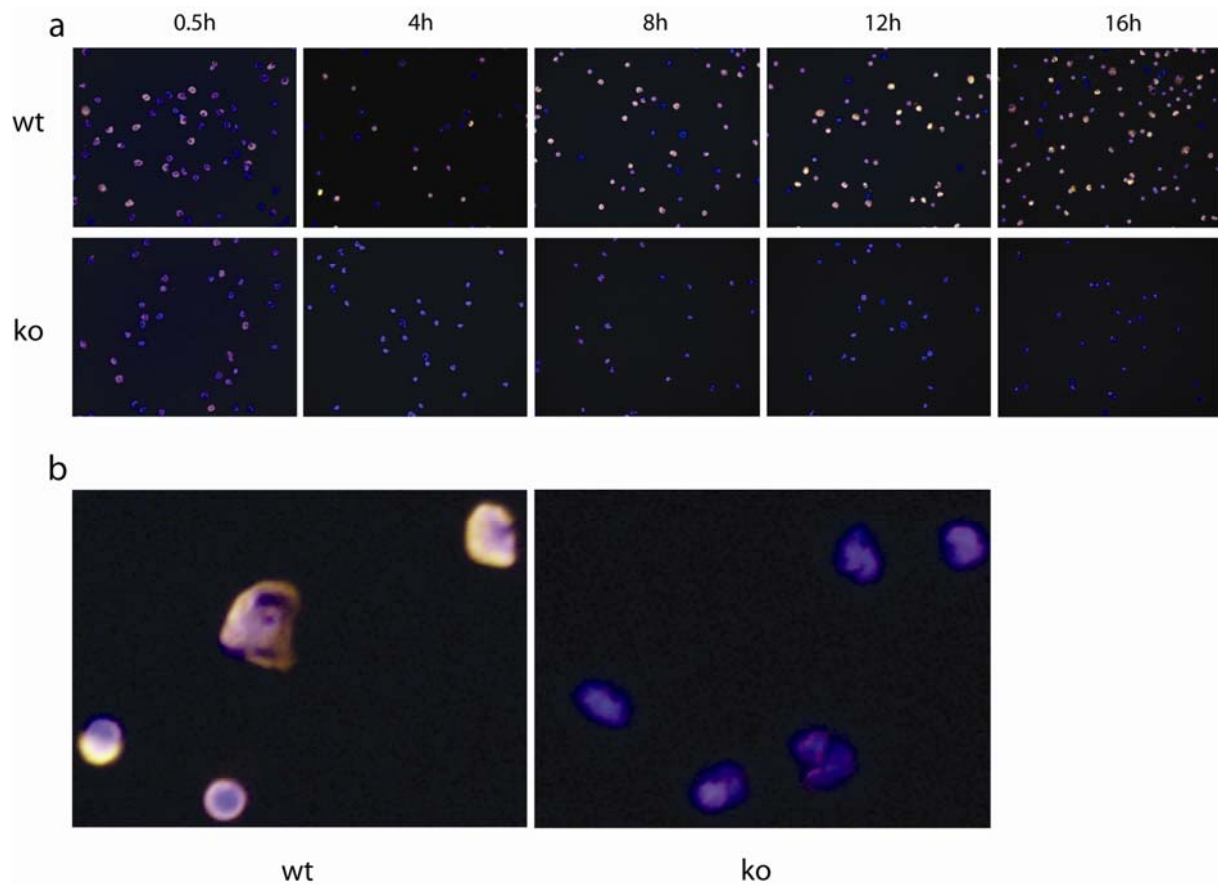


Ermert et al. Suppl. Fig 1

Online Supplement Fig. 1. Neutrophils are highly enriched after Percoll purification. Total bone marrow (a) or purified neutrophils (b) were stained for GR-1 and analyzed by FACS. The marker in the histogram indicates the percentage GR-1^{high} cells of total cells. Purified neutrophils were analyzed for nuclear morphology by cytopsin and subsequent H&E stain (c). Consistent with the FACS analysis, the cytopsin of the purified fraction contained mainly cells with lobulated nuclei, a morphological hallmark of neutrophils.



Ermert et al. Suppl. Fig 2

Online Supplement Fig. 2. PMA induces NET formation in C57Bl/6 but not in *gp91*^{-/-} neutrophils. C57Bl/6 (wild type) and *gp91*^{-/-} (ko) neutrophils were left untreated (0.5 h) or activated for indicated time points with 100 nM PMA and stained for histone/DNA complexes and DNA to count different morphological stages of neutrophil activation (a). (b) shows a higher magnification of wild type and ko neutrophils activated with PMA for 16h. Only neutrophils from wild type animals changed their nuclear morphology and released NETs upon stimulation.