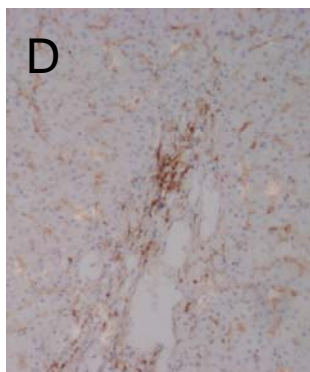
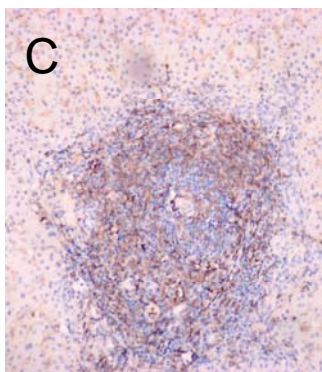
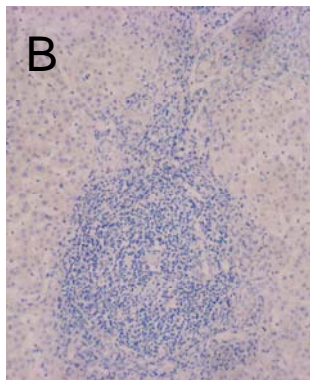
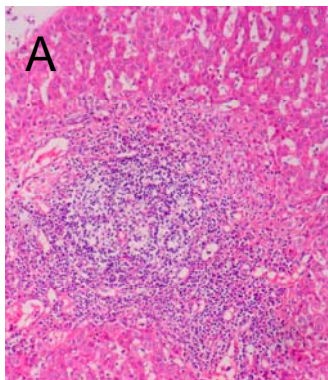
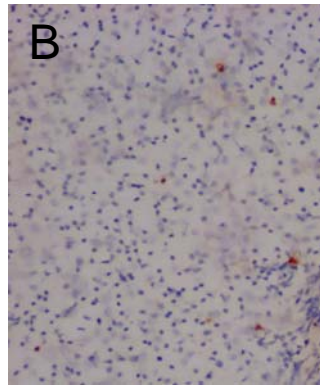
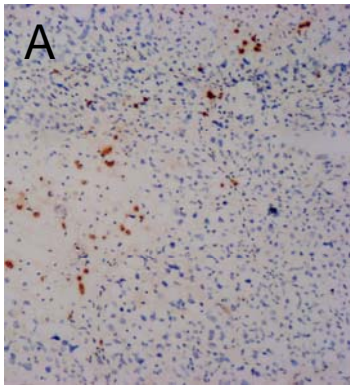


Supplemental Figure 1



Supplemental Figure 2



Online Supplemental Table 1**Association between CD4⁺ T cells and clinicopathological characteristics in HCC (n = 40)**

	Tumor		Non-tumor	
	CD4 ⁺ T cells (mean ± SD)	P ^a value	CD4 ⁺ T cells (mean ± SD)	P value
Age		NS		NS ^b
< 60	60.91 ± 31.32		29.24 ± 12.28	
≥ 60	65.17 ± 29.13		31.73 ± 13.92	
Gender		NS		NS
M	58.91 ± 30.34		27.29 ± 14.40	
F	75.45 ± 28.51		34.92 ± 17.42	
Tumor size(cm)		NS		NS
≤ 5	62.13 ± 30.14		25.64 ± 10.37	
>5	72.72 ± 27.98		32.87 ± 13.29	
Histology grading		NS		NS
Well	52.71 ± 27.80		3.79 ± 1.69	
Moderate	57.63 ± 34.18		3.13 ± 1.74	
Poor	69.21 ± 28.70		2.95 ± 1.65	
Vascular invasion		0.038		NS
<u>Presence</u>	47.03 ± 21.15		26.44 ± 9.72	
<u>Absence</u>	68.63 ± 31.82		31.22 ± 13.46	
AFP(ng/ml)		0.046		NS
≤ 400	67.51± 33.22		27.39 ± 11.69	
> 400	58.91± 28.88		33.83 ± 13.23	

a P values were obtained with Mann-Whitney U test or Kruskal-Wallis H test.
b No significant difference.

Online Supplemental Table 2Association between Foxp3⁺ Treg and clinicopathological characteristics in HCC (n = 40)

	Tumor		Non-tumor	
	Foxp3 ⁺ Treg (mean ± SD)	P ^a value	Foxp3 ⁺ Treg (mean ± SD)	P value
Age		NS		NS ^b
< 60	12.73 ± 7.03		1.08 ± 1.03	
≥ 60	14.74 ± 7.86		0.83 ± 1.12	
Gender		NS		NS
M	13.22 ± 7.06		1.16 ± 1.12	
F	13.06 ± 7.80		0.65 ± 0.71	
Tumor size(cm)		NS		NS
≤ 5	12.32 ± 7.02		1.06 ± 1.12	
> 5	13.82 ± 7.37		1.03 ± 0.98	
Histology grading		NS		NS
Well	16.44 ± 8.44		0.85 ± 0.62	
Moderate	12.48.63 ± 7.26		1.14 ± 1.08	
Poor	11.23 ± 5.46		1.07 ± 0.75	
Vascular invasion		0.0001		NS
<u>Presence</u>	21.73 ± 3.82		0.77 ± 0.87	
<u>Absence</u>	9.51 ± 4.67		1.16 ± 0.80	
AFP(ng/ml)		0.002		NS
≤ 400	8.80 ± 4.85		0.88 ± 0.85	
> 400	15.81 ± 7.11		1.11 ± 1.14	

a P values were obtained with Mann-Whitney U test or Kruskal-Wallis H test.

b No significant difference.

Online Supplemental Table 3

Association between serum TGF-beta1 and clinicopathological characteristics in HCC (n = 40)

	TGF-beta1 level (mean \pm SD)	P ^a value
	Blood samples	0.0001
HCC patient (n = 40)	51.66 \pm 39.39	
Normal healthy adult (n = 10)	4.87 \pm 1.27	
Tumor tissues of HCC patients (n = 40)		0.001
Cox-2 positive group (n = 23)	67.23 \pm 45.26	
Cox-2 negative group (n = 17)	30.58 \pm 11.88	
Vascular invasion (n = 40)		NS ^b
Presence	63.21 \pm 53.30	
Absence	46.49 \pm 31.46	
AFP(ng/ml) (n = 40)		0.04
\leq 400	35.47 \pm 16.90	
$>$ 400	61.37 \pm 45.73	

a P values were obtained with Mann-Whitney U test.

b No significant difference.