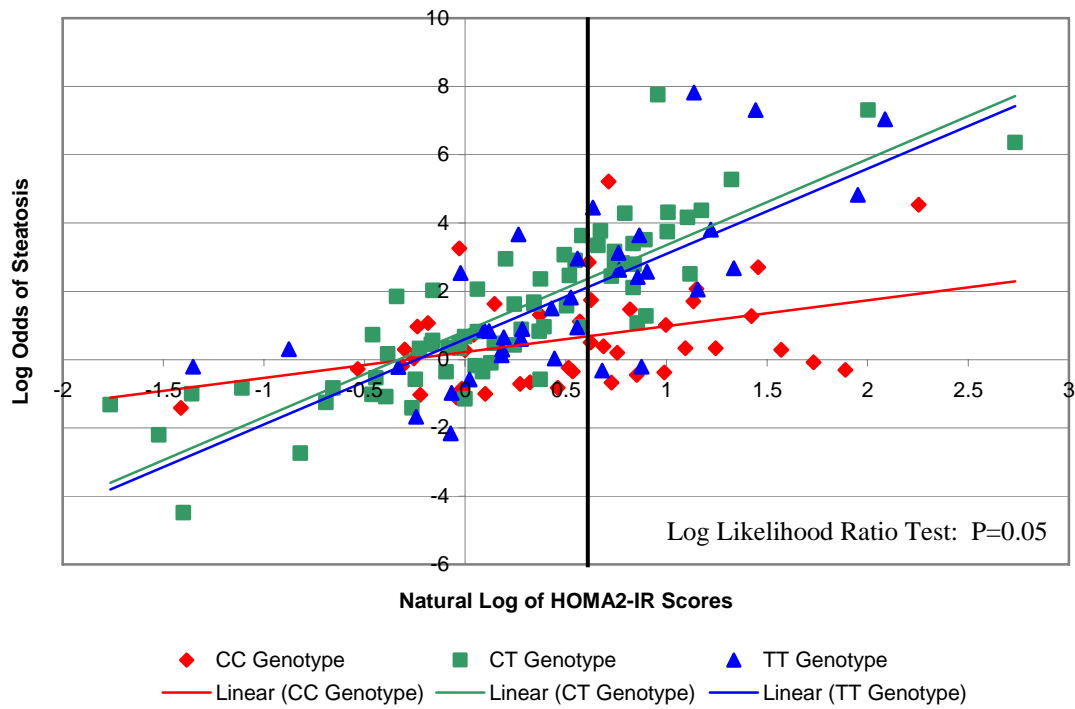
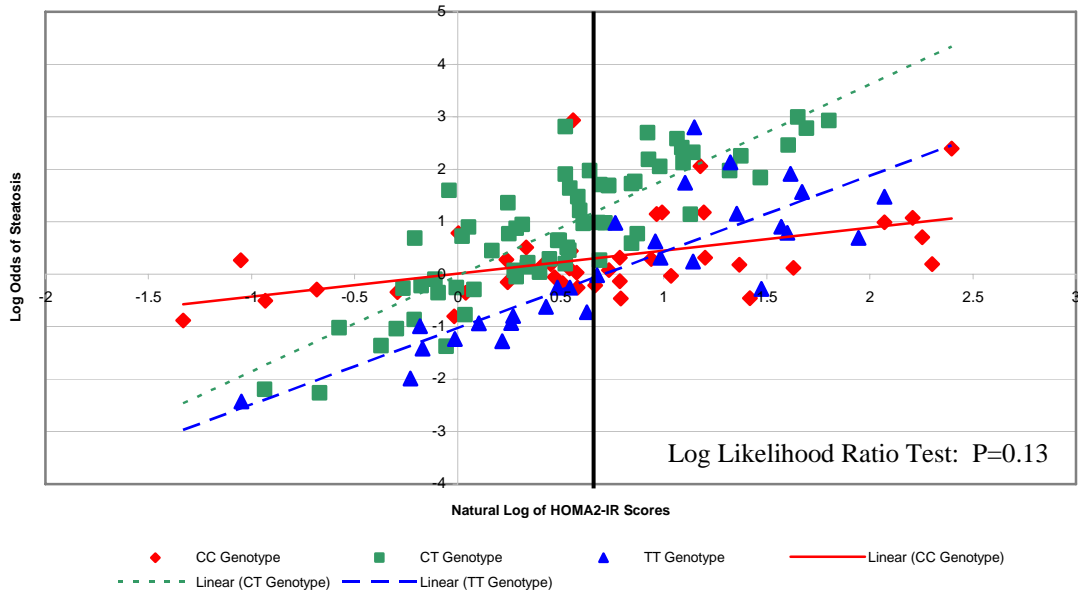


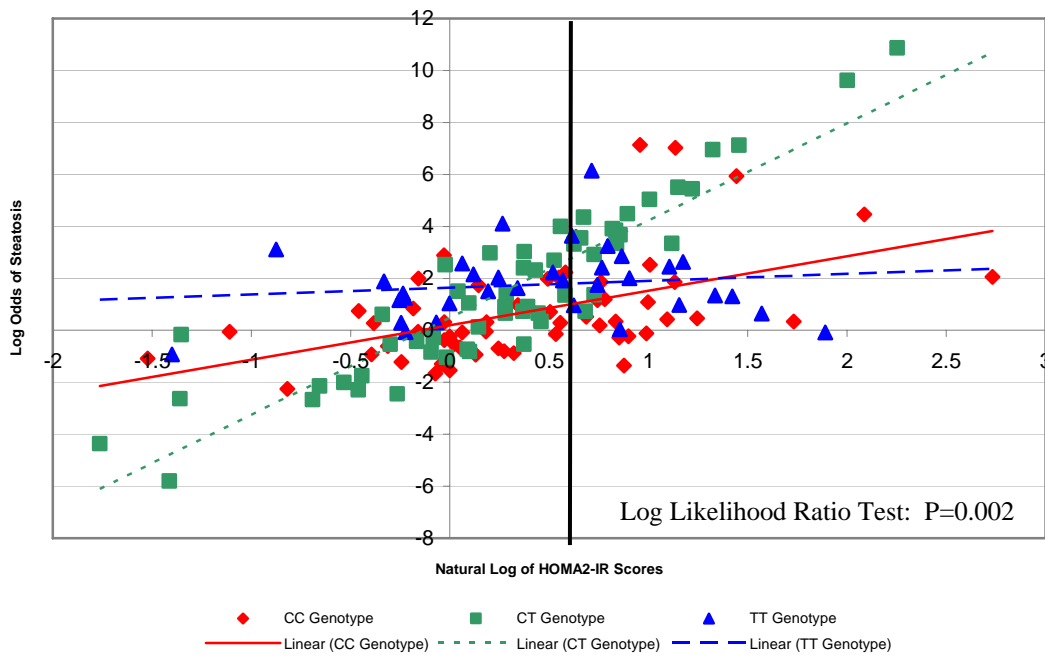
**Figure 1A: Comparison of Log Odds of Steatosis vs. Natural Log Transformed HOMA2-IR Scores for *IL10* rs3024496 in African Americans**



**Figure 1B: Comparison of Log Odds of Steatosis vs. Natural Log Transformed HOMA2-IR Scores for *IL10* rs3024496 in Caucasian Americans**



**Figure 2A: Comparison of Log Odds of Steatosis vs. Natural Log Transformed HOMA2-IR Scores for *LEPR rs1805096* in African Americans**



**Figure 2B: Comparison of Log Odds of Steatosis vs. Natural Log Transformed HOMA2-IR Scores for *LEPR rs1805096* in Caucasian Americans**

Table S1: Frequency of Genotypes for Single Nucleotide Polymorphisms among African Americans and Caucasian Americans

Single Nucleotide Polymorphism	African Americans N = 167			Caucasian Americans N = 184				
	Genotype	Frequency	Call Rate	HWE	Genotype	Frequency	Call Rate	HWE
<i>COL1A1 rs2586485</i>	CC	21 (0.13)	1.0	0.94		8 (0.04)	0.99	0.96
	CT	75 (0.45)			60 (0.33)			
	TT	71 (0.43)			115 (0.63)			
<i>COL1A1 rs2586494</i>	AA	5 (0.03)	1.0	0.70		4 (0.02)	0.99	0.53
	AC	52 (0.32)			41 (0.22)			
	CC	110 (0.66)			138 (0.76)			
<i>COL1A1 rs7406586</i>	AA	47 (0.28)	1.0	0.98		12 (0.07)	0.99	0.16
	AG	83 (0.50)			56 (0.30)			
	GG	37 (0.222)			115 (0.63)			
<i>COL1A1 rs2269336</i>	CC	94 (0.56)	1.0	0.44		137 (0.75)	0.99	0.73
	CG	65 (0.39)			44 (0.24)			
	GG	8 (0.05)			2 (0.01)			
<i>CYP2E1 rs10857735</i>	AA	27 (0.17)	0.94	0.59		1 (0.01)	0.96	0.39
	AC	73 (0.46)			17 (0.09)			
	CC	59 (0.37)			169 (0.90)			
<i>CYP2E1 rs2070673</i>	AA	76 (0.45)	1.0	0.10		6 (0.03)	0.99	0.44
	AT	66 (0.40)			46 (0.25)			
	TT	25 (0.15)			131 (0.72)			
<i>CYP2E1 rs915908</i>	AA	1 (0.01)	0.99	0.17		3 (0.01)	0.98	0.76
	AG	9 (0.05)			37 (0.21)			
	GG	156 (0.94)			140 (0.78)			
<i>CYP2E1 rs2070676</i>	CC	22 (0.14)	0.96	0.81		144 (0.81)	0.97	1.0
	CG	77 (0.48)			33 (0.18)			
	GG	62 (0.39)			2 (0.01)			
<i>IL6 rs1880242</i>	GG	4 (0.02)	1.0	1.0		34 (0.19)	0.99	0.03
	GT	48 (0.29)			106 (0.58)			
	TT	115 (0.69)			43 (0.24)			
<i>IL6 rs2056576</i>	CC	54 (0.32)	0.99	0.67		69 (0.38)	0.99	0.15
	CT	79 (0.48)			94 (0.51)			
	TT	33 (0.20)			20 (0.11)			
<i>IL6 rs2069827</i>	GG	158 (0.96)				152 (0.83)		
	GT	7 (0.04)				30 (0.16)		

<i>IL6 rs1800797</i>	TT	0 (0)	0.99	1.0	1 (0.01)	0.99	1.0
	AA	0 (0)			23 (0.12)		
	AG	22 (0.13)			92 (0.50)		
<i>IL6 rs1800795</i>	GG	144 (0.87)	0.99	1.0	69 (0.38)	1.0	0.37
	CC	0 (0)			27 (0.15)		
	CG	23 (0.14)			91 (0.49)		
<i>IL6 rs2069830</i>	GG	143 (0.86)	0.99	1.0	66 (0.36)	1.0	0.63
	CC	133 (0.81)			182 (0.99)		
	CT	30 (0.18)			1 (0.01)		
<i>IL6 rs2069837</i>	TT	2 (0.01)	0.99	0.69	0 (0)	0.99	1.0
	AA	132 (0.80)			159 (0.86)		
	AG	34 (0.20)			25 (0.14)		
<i>IL6 rs1554606</i>	GG	0 (0)	0.99	0.20	0 (0)	1.0	1.0
	GG	79 (0.48)			60 (0.33)		
	GT	71 (0.43)			95 (0.52)		
<i>IL6 rs2069845</i>	TT	16 (0.10)	0.99	0.99	29 (0.15)	1.0	0.40
	AA	75 (0.45)			60 (0.33)		
	AG	75 (0.45)			95 (0.52)		
<i>IL10 rs11119474</i>	GG	17 (0.10)	1.0	0.78	28 (0.15)	0.99	0.34
	AA	0 (0)			0 (0)		
	AG	2 (0.01)			27 (0.15)		
<i>IL10 rs3024505</i>	GG	175 (0.99)	1.0	1.0	156 (0.85)	0.99	0.61
	CC	148 (0.89)			138 (0.76)		
	CT	19 (0.11)			40 (0.22)		
<i>IL10 rs3024498</i>	TT	0 (0)	1.0	1.0	4 (0.02)	0.99	0.54
	AA	128 (0.77)			96 (0.53)		
	AG	39 (0.23)			67 (0.37)		
<i>IL10 rs3024496</i>	GG	0 (0)	1.0	0.13	20 (0.11)	0.99	0.12
	CC	28 (0.17)			50 (0.27)		
	CT	82 (0.49)			86 (0.47)		
<i>IL10 rs1554286</i>	TT	57 (0.34)	1.0	0.87	48 (0.26)	1.0	0.38
	CC	61 (0.37)			132 (0.72)		
	CT	79 (0.47)			50 (0.27)		
<i>IL10 rs2222202</i>	TT	27 (0.16)	1.0	0.87	3 (0.02)	1.0	0.76
	CC	84 (0.50)			48 (0.26)		
	CT	68 (0.41)			86 (0.47)		
<i>IL10 rs1800890</i>	TT	15 (0.09)	1.0	0.82	50 (0.27)	1.0	0.38
	AA	10 (0.06)			29 (0.16)		

<i>IL1R1 rs3917257</i>	AT	60 (0.36)			87 (0.47)		
	TT	97 (0.59)	1.0	0.86	67 (0.37)	0.99	0.93
<i>IL1R1 rs3917275</i>	CC	0 (0)			0 (0)		
	CG	0 (0)			0 (0)		
	GG	167 (1.0)	1.0	-	183 (1.0)	0.99	-
<i>IL1R1 rs2110726</i>	AA	153 (0.92)			182 (0.99)		
	AG	13 (0.07)			1 (0.01)		
	GG	1 (0.01)	1.0	0.23	0 (0)	0.99	1.0
<i>IL1R1 rs3917332</i>	CC	136 (0.81)			70 (0.38)		
	CT	30 (0.18)			94 (0.52)		
	TT	1 (0.01)	1.0	1.0	19 (0.10)	0.99	0.12
<i>IL1R1 rs871656</i>	AA	4 (0.02)			7 (0.04)		
	AT	40 (0.24)			60 (0.33)		
	TT	123 (0.74)	1.0	0.73	116 (0.63)	0.99	0.83
<i>LEPR rs6673324</i>	AA	11 (0.06)			10 (0.05)		
	AT	61 (0.37)			54 (0.30)		
	TT	95 (0.57)	1.0	0.78	118 (0.65)	0.99	0.26
<i>LEPR rs1137100</i>	AA	42 (0.25)			51 (0.28)		
	AG	87 (0.52)			90 (0.50)		
	GG	37 (0.22)	0.99	0.53	41 (0.22)	0.99	0.91
<i>LEPR rs1343982</i>	AA	112 (0.67)			100 (0.55)		
	AG	49 (0.29)			69 (0.68)		
	GG	6 (0.04)	1.0	0.82	14 (0.08)	0.99	0.66
<i>LEPR rs1137101</i>	AA	16 (0.10)			16 (0.09)		
	AG	75 (0.45)			69 (0.38)		
	GG	76 (0.45)	1.0	0.69	99 (0.54)	0.99	0.45
<i>LEPR rs2376018</i>	AA	42 (0.25)			53 (0.29)		
	AG	73 (0.44)			91 (0.50)		
	GG	52 (0.31)	1.0	0.11	39 (0.21)	0.99	0.99
<i>LEPR rs1805096</i>	AA	115 (0.69)			124 (0.68)		
	AG	49 (0.29)			54 (0.29)		
	GG	3 (0.02)	1.0	0.58	5 (0.03)	0.99	0.76
<i>LEPR rs1892534</i>	CC	52 (0.31)			74 (0.41)		
	CT	83 (0.50)			70 (0.38)		
	TT	32 (0.19)	1.0	0.91	38 (0.21)	0.99	0.01
<i>MCPI/CCL2 rs3917879</i>	AA	33 (0.20)			40 (0.22)		
	AG	83 (0.50)			69 (0.38)		
	GG	51 (0.31)	1.0	0.94	74 (0.40)	0.99	0.003

	GG	0 (0)			0 (0)		
	GT	0 (0)			0 (0)		
	TT	167 (1.0)	1.0	-	183 (1.0)	0.99	-
<i>MCPI/CCL2 rs1024611</i>							
	CC	9 (0.05)			16 (0.09)		
	CT	51 (0.31)			72 (0.40)		
	TT	106 (0.64)	0.99	0.39	96 (0.52)	1.0	0.64
<i>MCPI/CCL2 rs3760396</i>							
	CC	148 (0.89)			96 (0.52)		
	CG	17 (0.10)			77 (0.42)		
	GG	1 (0.01)	0.99	0.42	11 (0.06)	1.0	0.39
<i>MCPI/CCL2 rs2857657</i>							
	CC	144 (0.86)			124 (0.68)		
	CG	23 (0.14)			54 (0.29)		
	GG	0 (0)	1.0	1.0	5 (0.03)	0.99	0.76
<i>MCPI/CCL2 rs4586</i>							
	CC	66 (0.40)			26 (0.14)		
	CT	82 (0.49)			86 (0.47)		
	TT	18 (0.11)	0.99	0.31	72 (0.39)	1.0	0.97
<i>MCPI/CCL2 rs13900</i>							
	CC	115 (0.63)			96 (0.52)		
	CT	51 (0.31)			72 (0.39)		
	TT	10 (0.06)	0.99	0.27	16 (0.09)	1.0	0.64
<i>MCPI/CCL2 rs991804</i>							
	AA	26 (0.15)			16 (0.09)		
	AG	75 (0.45)			70 (0.39)		
	GG	66 (0.40)	1.0	0.54	96 (0.53)	0.99	0.53
<i>MCP2/CCL8 rs3138036</i>							
	AA	150 (0.90)			134 (0.73)		
	AG	15 (0.09)			47 (0.25)		
	GG	1 (0.01)	0.99	0.44	3 (0.02)	1.0	0.80
<i>MCP2/CCL8 rs3138038</i>							
	AA	156 (0.89)			135 (0.73)		
	AC	19 (0.11)			45 (0.25)		
	CC	1 (0.01)	0.99	0.46	2 (0.02)	1.0	1.0
<i>MCP2/CCL8 rs11575057</i>							
	CC	1 (0.01)			5 (0.03)		
	CT	19 (0.11)			53 (0.29)		
	TT	146 (0.88)	0.99	0.66	126 (0.68)	1.0	0.84
<i>TGFB rs2278422</i>							
	CC	14 (0.08)			29 (0.16)		
	CG	71 (0.43)			101 (0.55)		
	GG	82 (0.49)	1.0	0.80	54 (0.29)	1.0	0.11
<i>TGFB rs2241716</i>							
	AA	0 (0)			0 (0)		
	AG	16 (0.10)			0 (0)		
	GG	151 (0.90)	1.0	1.0	183 (1.0)	0.99	-
<i>TGFB rs1800471</i>							
	CC	0 (0)			1 (0.01)		
	CG	23 (0.14)			17 (0.09)		
	GG	144 (0.86)	1.0	1.0	165 (0.90)	0.99	0.38

<i>TNFα rs2229094</i>	CC	6 (0.04)			13 (0.07)		
	CT	78 (0.47)			57 (0.31)		
	TT	83 (0.50)	1.0	0.02	113 (0.62)	0.99	0.13
<i>TNFα rs3093662</i>	AA	138 (0.83)			156 (0.85)		
	AG	28 (0.17)			25 (0.14)		
	GG	1 (0.01)	1.0	1.0	3 (0.01)	1.0	0.11
<i>TNFα rs3093665</i>	AA	153 (0.92)			178 (0.97)		
	AC	14 (0.08)			6 (0.03)		
	CC	0 (0)	1.0	1.0	0 (0)	1.0	1.0

\* P-value based on genotype association chi square test

† Chi Square could not be estimated because minor allele frequency < 5% for the SNP

§ Monomorphic SNP

Table S2: Adjusted Odds of Steatosis for Single Nucleotide Polymorphisms among African Americans and Caucasian Americans

Single Nucleotide Polymorphism	African Americans* N = 167					Caucasian Americans* N = 184				
	SNP Main Effects			HOMA2-IR		SNP Main Effects			HOMA2-IR	
	N	Odds Ratio (95% CI)	p-value	Odds Ratio (95% CI)	p-value	N	Odds Ratio (95% CI)	p-value	Odds Ratio (95% CI)	p-value
<i>COL1A1 rs2586485</i>										
CC	96	1.00				68	1.00			
TT	71	1.41 (0.65-3.05)	0.38	2.18 (1.21-3.94)	0.01	115	1.04 (0.43-2.50)	0.93	3.19 (1.57-6.48)	0.001
<i>COL1A1 rs2586494</i>										
AA/AC	57	1.00				45	1.00		19.54(2.32-164.49)	0.01
CC	110	0.75 (0.33-1.72)	0.50	2.13 (1.18-3.83)	0.01	138	0.22 (0.05-1.02)	0.05	2.29 (1.05-4.98)	0.04
<i>COL1A1 rs7406586</i>										
AA	47	1.00				12	1.00		1.00	
AG	83	0.59 (0.23-1.52)	0.27	2.12 (1.17-3.85)	0.01	56	7.75 (0.94-63.95)	0.06	42.80 (3.63-504.40)	0.01
GG	37	0.46 (0.15-1.39)	0.17			115	3.36 (0.58-19.34)	0.18	1.96 (0.88-4.33)	0.10
<i>COL1A1 rs2269336</i>										
CC	94	1.00				137	1.00			
CG/GG	73	0.80 (0.37-1.70)	0.56	2.18 (1.21-3.94)	0.01	46	1.55 (0.59-4.04)	0.37	3.27 (1.60-6.70)	0.001
<i>CYP2E1 rs10857735</i>										
AA/AC	100	1.00				18	1.00			
CC	59	1.14 (0.52-2.53)	0.74	2.05 (1.15-3.66)	0.02	159	0.99 (0.18-5.06)	0.99	3.23 (1.58-6.61)	0.001
<i>CYP2E1 rs2070673</i>										
AA	76	1.00				6	1.00			
AT	66	1.11 (0.48-2.53)	0.81	2.15 (1.19-3.87)	0.01	46	0.48 (0.03-7.71)	0.54	3.27 (1.58-6.76)	0.001
TT	25	0.59 (0.19-1.87)	0.37			131	0.46 (0.03-6.55)	0.57		
<i>CYP2E1 rs915908</i>										
AA/AG	10	1.00				40	1.00			
GG	156	2.32 (0.34-16.04)	0.39	2.08 (1.16-3.73)	0.01	140	0.91 (0.34-2.47)	0.85	3.28 (1.61-6.71)	0.001
<i>CYP2E1 rs2070676</i>										
CC	22	1.00				144	1.00			
CG	77	3.37 (0.90-12.66)	0.07	1.91 (1.05-3.46)	0.03	33	0.93 (0.30-2.86)	0.90	3.37 (1.61-7.05)	0.01
GG	62	2.85 (0.76-10.70)	0.12			2	†			



<i>IL6 rs1880242</i>	GG/GT	52	1.00				140	1.00			
	TT	115	1.28 (0.57-2.89)	0.55	2.11 (1.18-3.79)	0.01	43	0.78 (0.29-2.06)	0.61	3.01 (1.44-6.29)	0.003
<i>IL6 rs2056576</i>	CC	54	1.00				69	1.00			
	CT	79	1.08 (0.47-2.52)	0.85	2.12 (1.18-3.82)	0.01	94	0.57 (0.23-1.42)	0.23	3.25 (1.58-6.67)	0.001
	TT	33	1.10 (0.38-1.34)	0.86			20	0.91 (0.23-3.65)	0.90		
<i>IL6 rs2069827</i>	GG	158	1.00				152	1.00			
	GT/TT	7	†		†		31	1.47 (0.50-4.30)	0.49	3.13 (1.55-6.34)	0.002
<i>IL6 rs1800797</i>	AA/AG	22	1.00				115	1.00			
	GG	144	2.06 (0.61-6.98)	0.25	2.15 (1.19-3.87)	0.01	69	0.45 (0.19-1.05)	0.07	3.00 (1.46-6.17)	0.003
<i>IL6 rs1800795</i>	CC/CG	23	1.00				118	1.00			
	GG	143	1.78 (0.55-5.73)	0.34	2.13 (1.18-3.83)	0.01	66	0.47 (0.20-1.10)	0.08	3.02 (1.47-6.20)	0.003
<i>IL6 rs2069830</i>	CC	133	1.00				182	1.00			
	CT/TT	32	0.87 (0.33-2.27)	0.77	2.05 (1.15-3.68)	0.02	1	†		†	
<i>IL6 rs2069837</i>	AA	132	1.00				159	1.00			
	AG/GG	34	0.81 (0.32-2.04)	0.65	2.10 (1.17-3.79)	0.01	25	0.82 (0.23-2.91)	0.76	3.12 (1.53-6.37)	0.002
<i>IL6 rs1554606</i>	GG	79	1.00				60	1.00			
	GT/TT	87	0.88 (0.41-1.91)	0.75	2.09 (1.16-3.74)	0.01	124	2.24 (0.94-5.30)	0.07	3.04 (1.48-6.26)	0.003
<i>IL6 rs2069845</i>	AA	75	1.00				60	1.00			
	AG/GG	92	0.86 (0.40-1.86)	0.70	2.14 (1.19-3.86)	0.01	123	2.52 (1.06-6.00)	0.04	2.98 (1.44-6.16)	0.003
<i>IL10 rs11119474</i>	AA/AG	2	1.00				27	1.00			
	GG	165	†		†		156	1.46 (0.48-4.48)	0.51	3.21 (1.57-6.52)	0.001
<i>IL10 rs3024505</i>	CC	148	1.00				138	1.00			
	CT/TT	19	0.36 (0.11-1.23)	0.10	2.05 (1.15-3.68)	0.02	44	0.50 (0.21-1.22)	0.13	3.18 (1.56-6.48)	0.002
<i>IL10 rs3024498</i>	AA	128	1.00				96	1.00		7.53 (2.34-24.26)	0.001

<i>IL10 rs3024496</i>	AG/GG	39	0.56 (0.23-1.37)	0.20	2.11 (1.17-3.81)	0.20	87	0.85 (0.34-2.16)	0.74	1.62 (0.68-3.87)	0.28
	CC	28	1.00		0.27 (0.05-1.31)	0.10	50	1.00		1.46 (0.52-4.15)	0.47
	CT	82	2.02 (0.64-6.36)	0.23	3.39 (1.31-8.78)	0.01	86	3.27 (1.06-10.09)	0.04	7.66 (2.31-25.42)	0.001
	TT	57	3.98 (1.15-13.77)	0.03	2.24 (0.80-6.28)	0.13	48	1.69 (0.48-5.92)	0.41	9.30 (1.45-59.53)	0.02
<i>IL10 rs1554286</i>	CC	61	1.00				131	1.00		2.15 (1.00-4.60)	0.05
	CT/TT	106	1.41 (0.64-3.14)	0.40	2.15 (1.20-3.87)	0.01	52	3.01 (0.87-10.40)	0.08	15.30 (2.64-88.51)	0.002
<i>IL10 rs2222202</i>	CC	84	1.00		3.02 (1.18-7.73)	0.02	48	1.00		9.30 (1.45-59.53)	0.02
	CT	68	0.55 (0.23-1.29)	0.17	3.21 (1.16-8.85)	0.03	86	1.94 (0.50-7.56)	0.34	7.66 (2.31-25.42)	0.001
	TT	15	0.85 (0.07-10.00)	0.90	0.02 (0.01-3.14)	0.12	50	0.59 (0.17-2.07)	0.41	1.46 (0.52-4.15)	0.47
<i>IL10 rs1800890</i>	AA/AT	70	1.00				116	1.00			
	TT	97	1.60 (0.73-3.48)	0.24	2.16 (1.20-3.88)	0.01	67	1.00 (0.41-2.43)	0.99	3.19 (1.57-6.47)	0.001
<i>IL1R1 rs3917275</i>	AA	153	1.00				182	1.00			
	AG/GG	14	1.05 (0.23-4.83)	0.95	2.15 (1.20-3.87)	0.01	1	†		†	
<i>IL1R1 rs2110726</i>	CC	136	1.00				70	1.00			
	CT/TT	31	0.32 (0.11-0.86)	0.02	2.13 (1.16-3.90)	0.01	113	2.21 (0.92-5.31)	0.08	2.99 (1.48-6.04)	0.002
<i>IL1R1 rs3917332</i>	AA/AT	44	1.00				67	1.00			
	TT	123	0.86 (0.35-2.11)	0.74	2.09 (1.16-3.78)	0.01	116	1.38 (0.60-3.17)	0.45	3.22 (1.58-6.54)	0.001
<i>IL1R1 rs871656</i>	AA/AT	72	1.00				64	1.00			
	TT	95	0.83 (0.29-1.76)	0.62	2.13 (1.18-3.83)	0.01	118	0.88 (0.37-2.08)	0.77	3.28 (1.60-6.73)	0.001
<i>LEPR rs6673324</i>	AA	42	1.00				51	1.00			
	AG	87	2.43 (0.97-6.05)	0.057	2.13 (1.17-3.88)	0.02	90	1.64 (0.58-4.62)	0.35	3.44 (1.66-7.13)	0.001
	GG	37	1.82 (0.57-5.79)	0.31			41	1.18 (0.34-4.06)	0.79		
<i>LEPR rs1137100</i>	AA	112	1.00				100	1.00			
	AG/GG	55	0.25 (0.11-0.58)	0.001	2.25 (1.22-4.15)	0.01	83	0.90 (0.40-2.05)	0.81	3.21 (1.58-6.54)	0.001
<i>LEPR rs1343982</i>	AA/AG	91	1.00				85	1.00			

<i>LEPR rs1137101</i>	GG	76	1.66 (0.77-3.58)	0.19	2.16 (1.20-3.91)	0.01	98	1.11 (0.49-2.53)	0.75	3.22 (1.58-6.55)	0.01
	AA	42	1.00				53	1.00			
	AG	73	0.92 (0.35-2.42)	0.86	2.20 (1.22-3.98)	0.01	91	1.58 (0.58-4.30)	0.37	3.78 (1.80-7.96)	0.001
<i>LEPR rs2376018</i>	GG	52	0.67 (0.24-1.86)	0.44			39	0.31 (0.09-1.10)	0.07		
	AA	115	1.00				124	1.00			
<i>LEPR rs1805096</i>	AG/GG	52	1.38 (0.61-3.12)	0.45	2.12 (1.18-3.82)	0.01	59	2.09 (0.84-5.22)	0.11	3.23 (1.57-6.62)	0.001
	CC	52	1.00				74	1.00		2.01 (0.75-5.40)	0.17
	CT	83	2.11 (0.87-5.13)	0.10	2.38 (1.30-4.35)	0.01	70	4.36 (1.21-15.73)	0.03	29.60 (4.27-205.2)	0.001
<i>LEPR rs1892534</i>	TT	32	0.63 (0.21-1.90)	0.42			38	2.36 (0.76-7.33)	0.14	1.01 (0.31-3.32)	0.98
	AA	33	1.00				40	1.00		1.20 (0.37-3.90)	0.76
	AG	83	2.98 (1.07-8.33)	0.04	2.35 (1.28-4.30)	0.01	69	1.79 (0.45-7.16)	0.41	26.22 (3.81-180.4)	0.001
<i>MCPI/CCL2 rs3917879<sup>‡</sup></i>	GG	51	1.55 (0.52-4.62)	0.43			74	0.44 (0.15-1.34)	0.15	1.97 (0.74-5.25)	0.18
<i>MCPI/CCL2 rs1024611</i>	CC/CT	60	1.00				88	1.00			
	TT	106	2.09 (0.94-4.63)	0.07	2.11 (1.17-3.81)	0.01	96	1.10 (0.49-2.47)	0.82	3.17 (1.56-6.43)	0.001
<i>MCPI/CCL2 rs3760396</i>	CC	148	1.00				96	1.00			
	CG/GG	18	2.36 (0.59-9.48)	0.23	2.06 (1.15-3.69)	0.02	88	1.91 (0.82-4.42)	0.13	3.34 (1.63-6.85)	0.001
<i>MCPI/CCL2 rs2857657</i>	CC	144	1.00		1.73 (0.95-3.16)	0.07	124	1.00			
	CG/GG	23	2.33 (0.42-12.89)	0.33	24.80 (1.23-500.2)	0.04	59	1.55 (0.60-3.97)	0.37	3.10 (1.54-6.24)	0.002
<i>MCPI/CCL2 rs4586</i>	CC	66	1.00				26	1.00			
	CT	82	1.59 (0.71-3.56)	0.26	2.00 (1.11-3.59)	0.02	86	3.21 (0.94-10.95)	0.06	3.14 (1.54-6.40)	0.002
<i>MCPI/CCL2 rs13900</i>	TT	18	1.21 (0.31-4.70)	0.79			72	3.16 (0.89-11.28)	0.08		
	CC	105	1.00				96	1.00			
<i>MCPI/CCL2 rs991804</i>	CT/TT	61	0.52 (0.24-1.15)	0.11	2.10 (1.16-3.77)	0.01	88	0.91 (0.41-2.05)	0.82	3.17 (1.56-6.43)	0.001
	AA/AG	101	1.00				86	1.00			
	GG	66	1.46 (0.67-3.18)	0.34	2.06 (1.14-3.71)	0.02	96	1.08 (0.48-2.44)	0.85	3.19 (1.57-6.48)	0.001

<i>MCP2/CCL8 rs3138036</i>											
AA	150	1.00					134	1.00			
AG/GG	16	0.44 (0.12-1.58)	0.21	2.03 (1.13-3.66)	0.02		50	1.27 (0.49-3.32)	0.63	3.26 (1.59-6.69)	0.001
<i>MCP2/CCL8 rs3138038</i>											
AA	147	1.00					135	1.00			
AC/CC	19	0.36 (0.11-1.23)	0.10	2.00 (1.11-3.61)	0.02		49	1.27 (0.49-3.32)	0.63	1.27 (0.49-3.32)	0.001
<i>MCP2/CCL8 rs11575057</i>											
CC/CT	20	1.00					58	1.00			
TT	146	3.16 (0.95-10.47)	0.06	2.00 (1.10-3.62)	0.02		126	1.03 (0.42-2.57)	0.94	3.16 (1.55-6.44)	0.002
<i>TGFB rs2278422</i>											
CC/CG	85	1.00					130	1.00			
GG	82	4.42 (1.84-10.65)	0.001	3.10 (1.59-6.05)	0.001		54	1.50 (0.62-3.60)	0.37	3.25 (1.59-6.63)	0.001
<i>TGFB rs2241716</i>											
AA/AG	16	1.00		0.65 (0.22-1.94)	0.44		0	1.00			
GG	151	1.48 (0.47-4.62)	0.50	3.34 (1.61-6.91)	0.001		183	†		†	
<i>TGFB rs1800471</i>											
CC/CG	23	1.00					18	1.00			
GG	144	0.57 (0.18-1.76)	0.33	2.18 (1.20-3.94)	0.01		165	1.61 (0.37-6.95)	0.52	3.23 (1.58-6.58)	0.001
<i>TNFα rs2229094</i>											
CC/CT	84	1.00					70	1.00			
TT	83	0.78 (0.37-1.67)	0.53	2.13 (1.19-3.81)	0.01		113	1.36 (0.58-3.19)	0.48	3.27 (1.60-6.70)	0.001
<i>TNFα rs3093662</i>											
AA	138	1.00					156	1.00			
AG/GG	29	0.98 (0.37-2.66)	0.98	2.12 (1.18-3.82)	0.01		28	1.24 (0.41-3.82)	0.70	3.19 (1.57-6.47)	0.001
<i>TNFα rs3093665</i>											
AA	153	1.00					178	1.00			
AC/CC	14	1.06 (0.29-3.85)	0.93	2.13 (1.18-3.82)	0.01		6	0.39 (0.06-2.53)	0.32	3.14 (1.54-6.38)	0.002

\* Model adjusted for the genetic variant, centered Ishak fibrosis score, centered weekly alcohol consumption, centered ln HOMA2-IR score, centered body mass index, centered log<sub>10</sub> baseline viral levels and interaction between the genetic variant and ln HOMA2-IR score (where significant)

‡ Statistically significant log likelihood ratio test for the interaction between the genetic variant and ln HOMA2-IR scores.

† Minor allele frequency less than 5% in one population

§ Homozygote genotype combined with heterozygote genotype to estimate associations

**Table S3: Raw Data Comparing Steatosis and Insulin Resistance and the Frequency of *III10 rs3024496* variant genotypes**

	African Americans		Caucasian Americans	
	No Steatosis	Steatosis $\geq$ 5%	No Steatosis	Steatosis $\geq$ 5%
HOMA2-IR < 2	CC: 6 CT: 25 TT: 9	CC: 3 (33.3) CT: 23 (47.9) TT: 17 (65.4)	CC: 12 CT: 21 TT: 8	CC: 15 (55.7) CT: 32 (60.4) TT: 16 (66.7)
HOMA2-IR $\geq$ 2	CC: 7 CT: 4 TT: 4	CC: 4 (36.4) CT: 18 (81.8) TT: 22 (84.6)	CC: 6 CT: 2 TT: 2	CC: 11 (64.7) CT: 20 (90.1) TT: 11 (84.7)

**Table S4: Frequencies of *LEPR rs1805096* Genotypes for African Americans and Caucasian Americans by Steatosis and Insulin Resistance**

	African Americans		Caucasian Americans	
	No Steatosis	Steatosis $\geq$ 5%	No Steatosis	Steatosis $\geq$ 5%
HOMA2-IR < 2	CC: 12 CT: 18 TT: 10	CC: 12 (50.0) CT: 27 (60.0) TT: 4 (28.6)	CC: 18 CT: 19 TT: 4	CC: 22 (55.0) CT: 24 (55.8) TT: 16 (80.0)
HOMA2-IR $\geq$ 2	CC: 7 CT: 4 TT: 4	CC: 13 (65.0) CT: 19 (82.6) TT: 12 (75.0)	CC: 7 CT: 0 TT: 3	CC: 15 (68.2) CT: 15 (100.0) TT: 11 (78.6)

**Table S5: Adjusted Odds of Insulin Resistance for Single Nucleotide Polymorphisms among African Americans and Caucasian Americans**

Single Nucleotide Polymorphism	African Americans* N = 142				Caucasian Americans* N = 156			
	N	Odds Ratio	Confidence Interval	p-value	N	Odds Ratio	Confidence Interval	p-value
<i>COL1A1 rs2586485</i>								
CC	85	1.00			57	1.00		
TT	57	0.89	0.41-1.91	0.76	98	0.72	0.34-1.52	0.39
<i>COL1A1 rs2586494</i>								
AA/AC	45	1.00			37	1.00		
CC	97	1.00	0.45-2.22	0.99	118	2.07	0.82-5.17	0.12
<i>COL1A1 rs7406586</i>								
AA	41	1.00			10	1.00		
AG	70	1.88	0.75-4.70	0.18	49	0.87	0.18-4.20	0.86
GG	31	0.87	0.27-2.78	0.82	96	0.69	0.15-3.12	0.63
<i>COL1A1 rs2269336</i>								
CC	79	1.00			117	1.00		
CG/GG	63	0.77	0.36-1.66	0.51	38	0.46	0.19-1.14	0.09
<i>CYP2E1 rs10857735</i>								
AA/CC	86	1.00			14	1.00		
CC	51	0.86	0.50-1.47	0.57	136	0.52	0.14-1.57	0.25
<i>CYP2E1 rs2070673</i>								
AA	68	1.00			5	1.00		
AT	54	0.87	0.39-1.97	0.74	39	1.56	0.21-11.86	0.67
TT	20	0.68	0.21-1.28	0.51	111	0.80	0.11-5.68	0.83
<i>CYP2E1 rs915908</i>								
AA/AG	6	1.00			33	1.00		
GG	135	4.49	0.42-47.89	0.21	120	1.37	0.55-3.42	0.50
<i>CYP2E1 rs2070676</i>								
CC	19	1.00			121	1.00		
CG	61	2.33	0.57-9.79	0.25	29	2.01	0.81-4.98	0.13
GG	58	1.96	0.47-8.25	0.36	2	†		
<i>IL6 rs1880242</i>								
GG/GT	52	1.00			140	1.00		
TT	115	1.06	0.47-2.39	0.89	43	0.29	0.10-0.80	0.02
<i>IL6 rs2056576</i>								
CC	54	1.00			69	1.00		
CT	79	0.48	0.20-1.14	0.10	94	1.22	0.57-2.61	0.62
TT	33	0.51	0.17-1.47	0.21	20	0.35	0.07-1.81	0.21
<i>IL6 rs2069827</i>								
GG	158	1.00			152	1.00		
GT/TT	7	5.19	0.65-41.52	0.12	31	0.62	0.20-1.91	0.41
<i>IL6 rs1800797</i>								
AA/AG	22	1.00			115	1.00		
GG	144	0.55	0.18-1.69	0.30	69	0.60	0.28-1.32	0.20
<i>IL6 rs1800795</i>								
CC/CG	23	1.00			118	1.00		

<i>IL6 rs2069830</i>	GG	143	0.62	0.29-1.36	0.23	66	0.48	0.16-1.44	0.19
	CC	133	1.00			182	1.00		
<i>IL6 rs2069837</i>	CT/TT	32	0.61	0.23-1.65	0.33	1	†		
	AA/AG	132	1.00			159	1.00		
<i>IL6 rs1554606</i>	GG	34	2.07	0.81-5.28	0.13	25	0.24	0.06-0.88	0.03
	GG	79	1.00			60	1.00		
<i>IL6 rs2069845</i>	GT/TT	87	1.45	0.69-3.15	0.35	124	1.71	0.76-3.85	0.20
	AA	75	1.00			60	1.00		
<i>IL10 rs11119474</i>	AG/GG	92	1.59	0.73-3.48	0.24	123	1.70	0.75-3.85	0.20
	AA/AG	2	1.00			23	1.00		
<i>IL10 rs3024505</i>	GG	140	†			132	1.00	0.33-2.94	0.98
	CC	126	1.00			113	1.00		
<i>IL10 rs3024498</i>	CT/TT	16	0.86	0.25-2.97	0.81	41	1.16	0.49-2.73	0.73
	AA	112	1.00			79	1.00		
<i>IL10 rs3024496</i>	AG/GG	30	1.71	0.68-4.33	0.26	76	1.77	0.85-3.70	0.13
	CC	20	1.00			44	1.00		
	CT	70	0.26	0.08-0.82	0.03	75	0.52	0.22-1.23	0.14
<i>IL10 rs1554286</i>	TT	52	0.41	0.12-1.41	0.16	37	0.47	0.17-1.33	0.16
	CC	49	1.00			109	1.00		
<i>IL10 rs2222202</i>	CT/TT	93	0.59	0.26-1.31	0.19	46	0.48	0.20-1.11	0.09
	CC	74	1.00			37	1.00		
	CT	57	0.69	0.30-1.57	0.38	75	1.10	0.43-2.84	0.85
<i>IL10 rs1800890</i>	TT	11	5.07	1.10-23.45	0.04	44	2.11	0.75-5.94	0.16
	AA/AT	55	1.00			102	1.00		
<i>IL1R1 rs3917275</i>	TT	87	0.39	0.18-0.88	0.02	53	0.65	0.29-1.43	0.28
	AA	130	1.00			154	1.00		
<i>IL1R1 rs2110726</i>	AG/GG	12	2.00	0.47-8.60	0.35	1	†		
	CC	117	1.00			59	1.00		
<i>IL1R1 rs3917332</i>	CT/TT	25	0.65	0.23-1.86	0.42	96	1.18	0.55-2.56	0.67
	AA/AT	33	1.00			60	1.00		
<i>IL1R1 rs871656</i>	TT	109	0.60	0.25-1.43	0.25	95	0.94	0.44-2.00	0.87
	AA/AT	64	1.00			53	1.00		
<i>LEPR rs6673324</i>	TT	78	1.03	0.49-2.18	0.93	101	1.03	0.48-2.22	0.94
	AA	33	1.00			41	1.00		
	AG	81	0.97	0.39-2.37	0.94	76	0.33	0.14-0.79	0.01





<i>TGFB rs2241716</i>	CC/CG	76	1.00			111	1.00		
	GG	66	0.38	0.17-0.89	0.03	45	0.35	0.14-0.87	0.02
<i>TGFB rs1800471</i>	AA/AG	16	1.00			0	1.00		
	GG	126	1.32	0.41-4.29	0.64	155	†		
<i>TNFα rs2229094</i>	CC/CG	16	1.00			16	1.00		
	GG	126	1.68	0.56-5.00	0.35	139	0.77	0.25-2.39	0.65
<i>TNFα rs3093662</i>	CC/CT	69	1.00			58	1.00		
	TT	73	0.75	0.35-1.61	0.45	97	0.80	0.37-1.75	0.58
<i>TNFα rs3092665</i>	AA	119	1.00			131	1.00		
	AG/GG	23	0.91	0.34-2.46	0.85	25	0.79	0.26-2.41	0.68
	AA	130	1.00			151	1.00		
	AC/CC	12	0.63	0.17-2.38	0.49	5	†		

\* Model adjusted for Ishak fibrosis score, steatosis, body mass index, age and triglyceride levels

† Model could not be estimated because minor allele frequency < 5% for the SNP

§ Monomorphic SNP

Table S6: Amount of common genetic variation covered in each gene by the selected SNPs

SNP Selection Method 1:							
African Americans					Caucasian Americans		
Gene	Number of SNPs Selected	Number of SNPs for R2 = 0.8	Number of SNPs Covered	Variation Covered	Number of SNPs for R2 = 0.8	Number of SNPs Covered	Variation Covered
IL6	9	15	4	26%	13	10	76%
IL10	7	14	12	85%	16	13	81%
TGFB1	3	9	1	11%	13	1	7%
TNF-a	3	18	4	22%	15	3	20%
<b>AVERAGE</b>	<b>22</b>	<b>56</b>	<b>21</b>	<b>38%</b>	<b>57</b>	<b>27</b>	<b>47%</b>
SNP Selection Method 2:							
COL1A1	4	21	5	23%	20	14	70%
CYP2E1	4	44	7	15%	32	9	28%
IL1R1	5	48	2	4%	48	8	16%
LEPR	7	234	51	21%	220	89	40%
MCP1	7	10	4	40%	6	5	83%
MCP2	3	6	0	0%	18	8	44%
<b>AVERAGE</b>	<b>30</b>	<b>363</b>	<b>69</b>	<b>19%</b>	<b>344</b>	<b>133</b>	<b>39%</b>