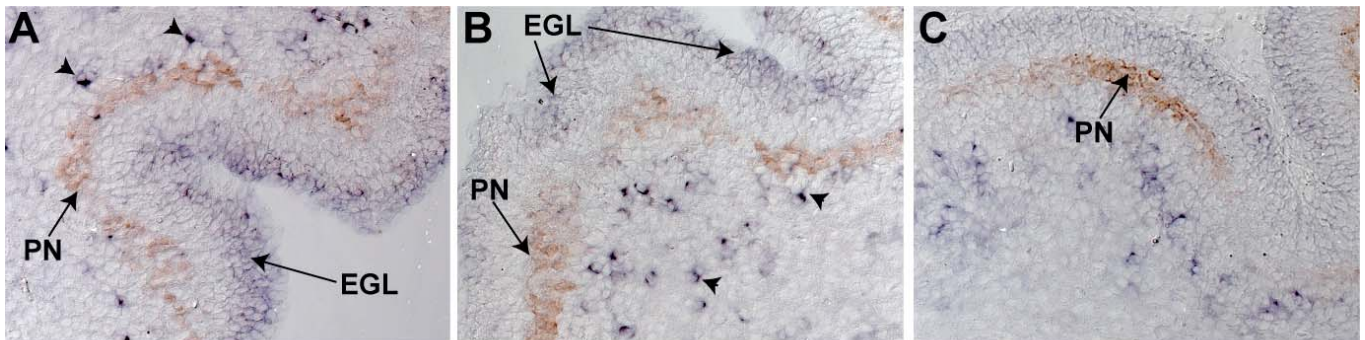


Fernandez et al., Supplementary figure 1



Fernandez et al., Supplementary Figure 2

Supplemental data

Supplementary Fig. 1: *Igfbp2* expression in postnatal cerebellum.

Sagittal sections of mouse postnatal P1 cerebellum were hybridized with RNA probe corresponding to full-length mouse *Igfbp2*. *Igfbp2* expression is detected in the EGL, in cells within the PL, in cells in the IGL and in meninges.

Supplementary Fig. 2: *Igfbp5* expression does not colocalize with Calbindin expression.

Sagittal sections of mouse postnatal P1 cerebellum were hybridized with an antisense RNA probe corresponding to full-length mouse *Igfbp5* and incubated with the anti-Calbindin antibody. *Igfbp5* expression (purple) is detected in the EGL and in scattered cells within or around the Purkinje cell layer. The *igfbp5* expression in the isolated cells does not colocalize with Calbindin expressing cells (brown) which correspond to Purkinje neurons (PN).