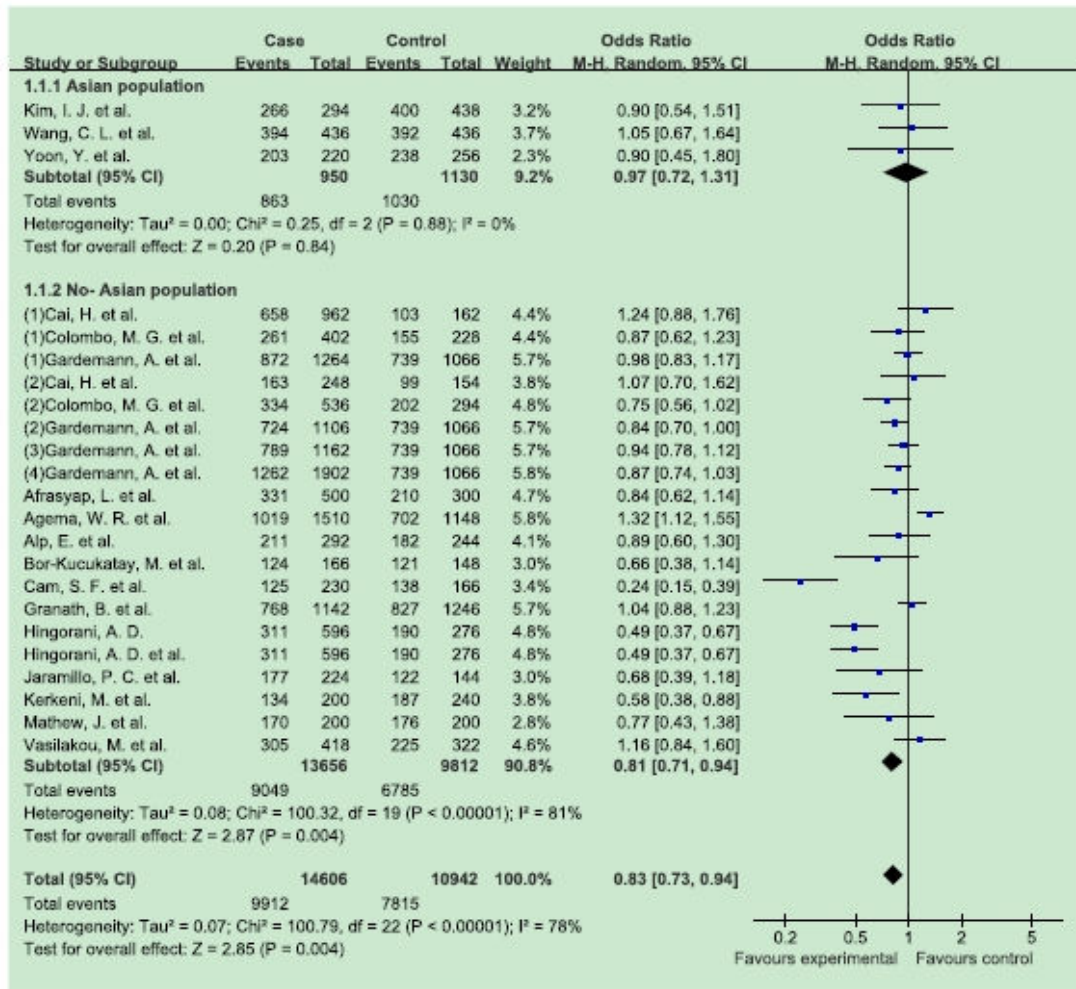
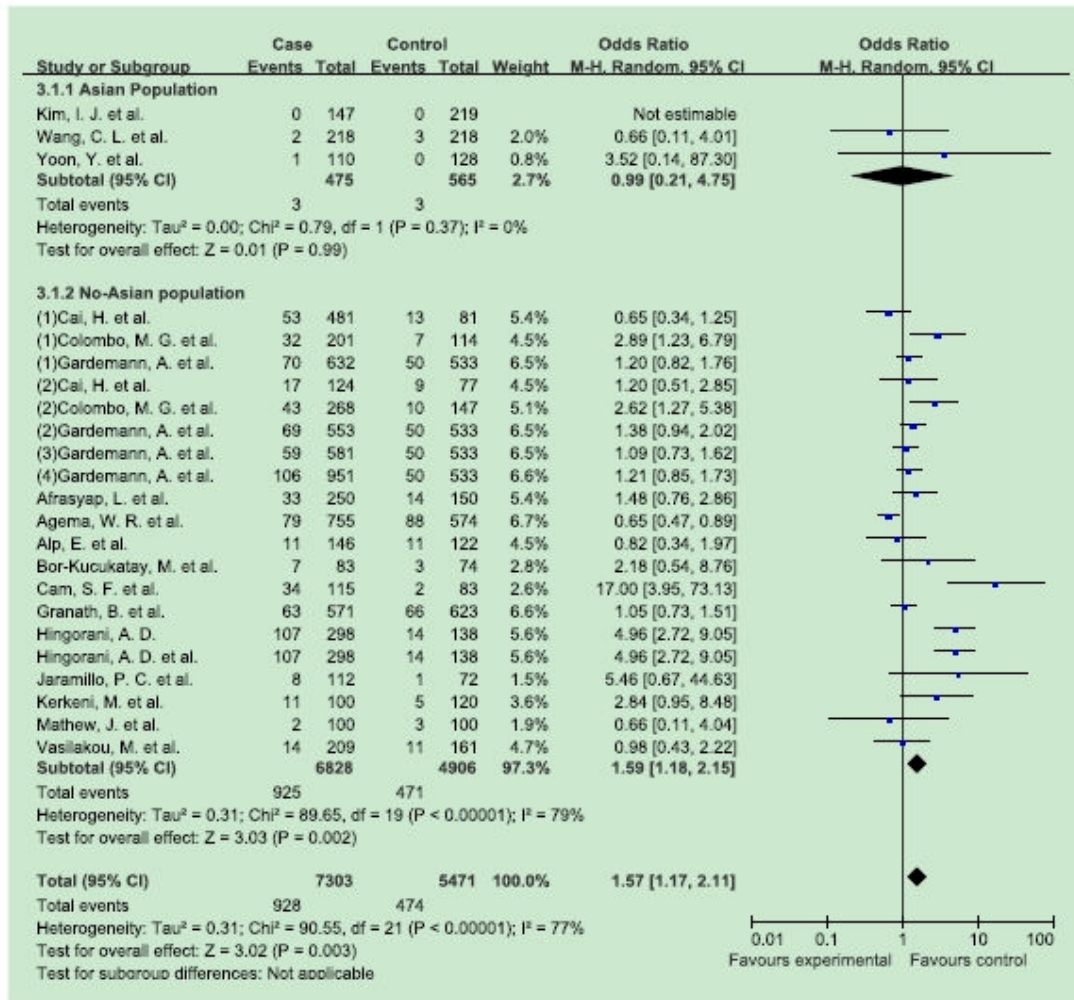


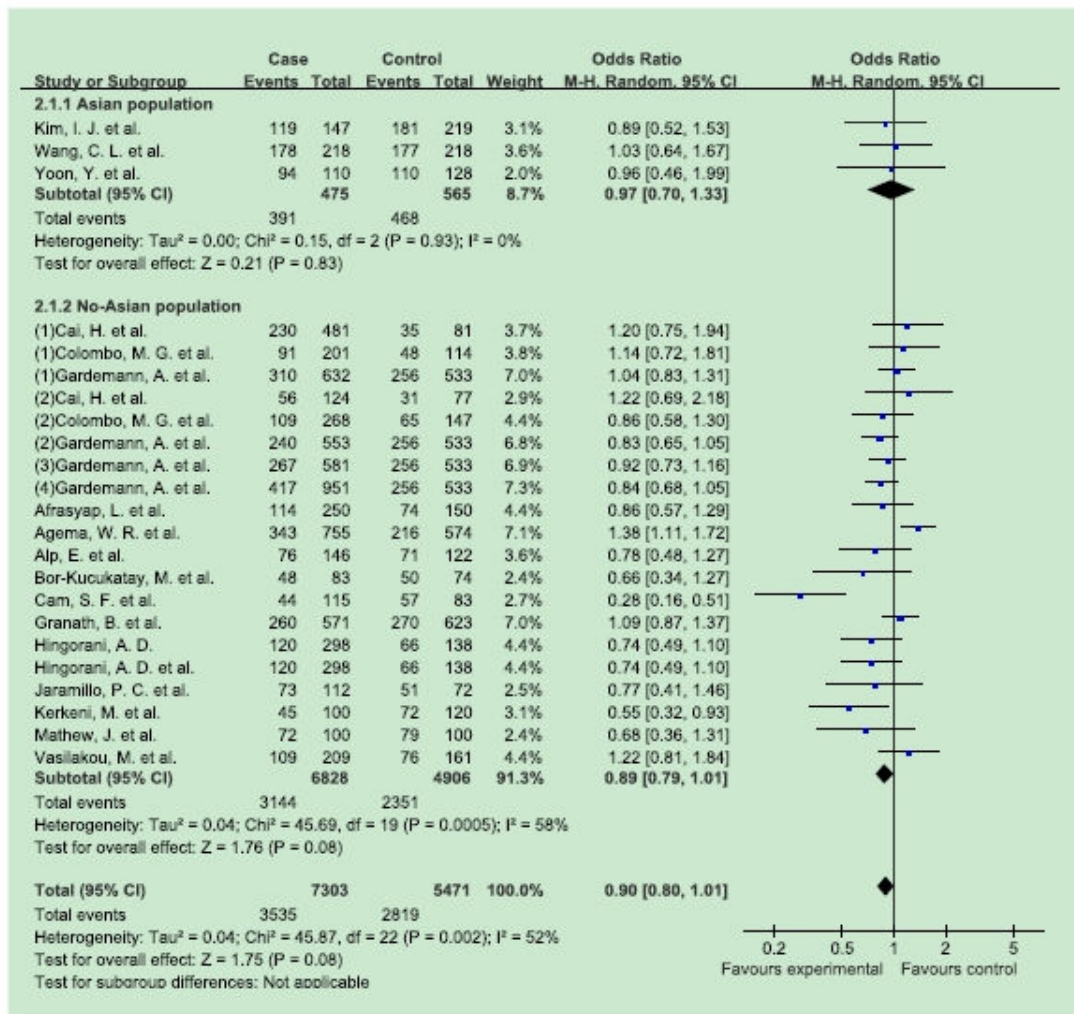
## Supplementary Files



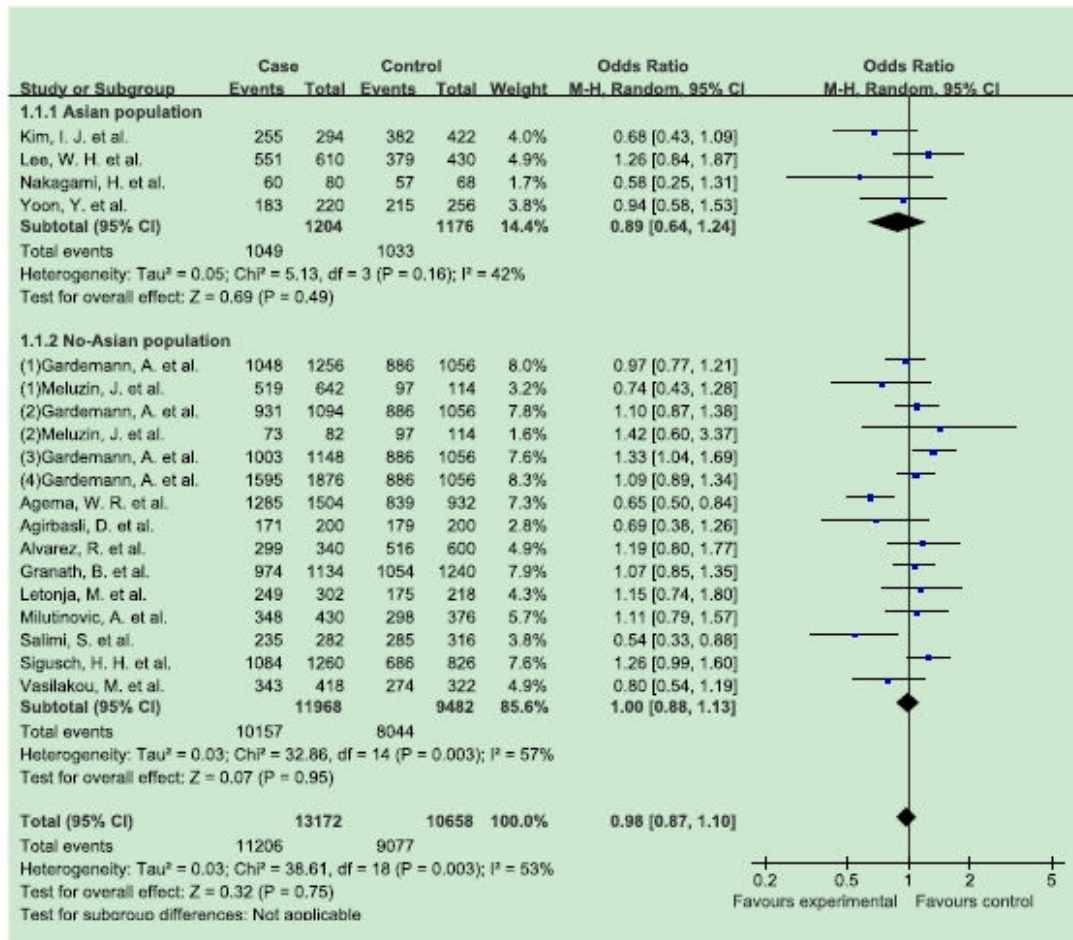
**Figure 1** Forest plots of ln (OR) with 95% CI for G894T allele studies with CAD. Blue squares indicate the ln (OR), with the size of the square inversely proportional to its variance, and horizontal lines represent the 95% CI. The pooled results are indicated by the shaded black diamond.



**Figure 2** Forest plots of ln (OR) with 95% CI for G894T TG+TT/GG studies with CAD. Blue squares indicate the ln (OR), with the size of the square inversely proportional to its variance, and horizontal lines represent the 95% CI. The pooled results are indicated by the shaded black diamond.

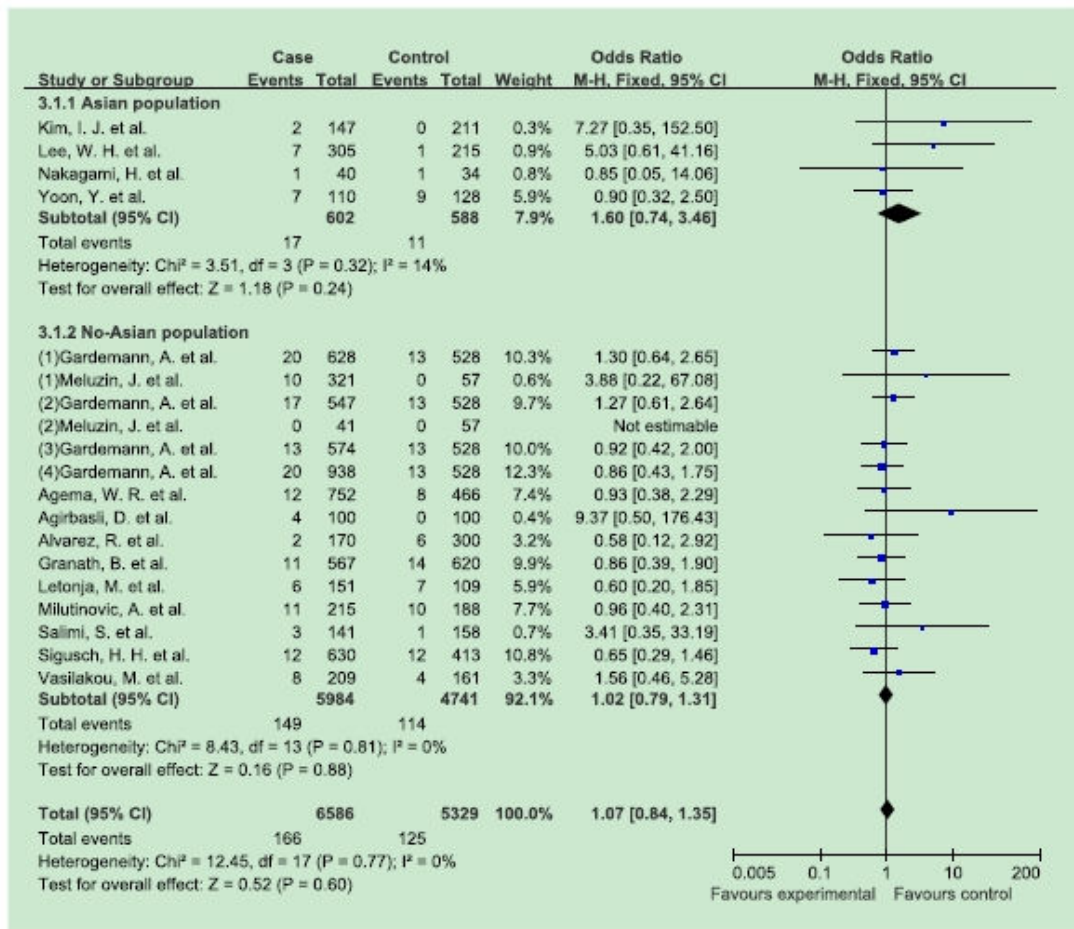


**Figure 3** Forest plots of ln (OR) with 95% CI for G894T TG+GG/TT studies with CAD. Blue squares indicate the ln (OR), with the size of the square inversely proportional to its variance, and horizontal lines represent the 95% CI. The pooled results are indicated by the shaded black diamond.

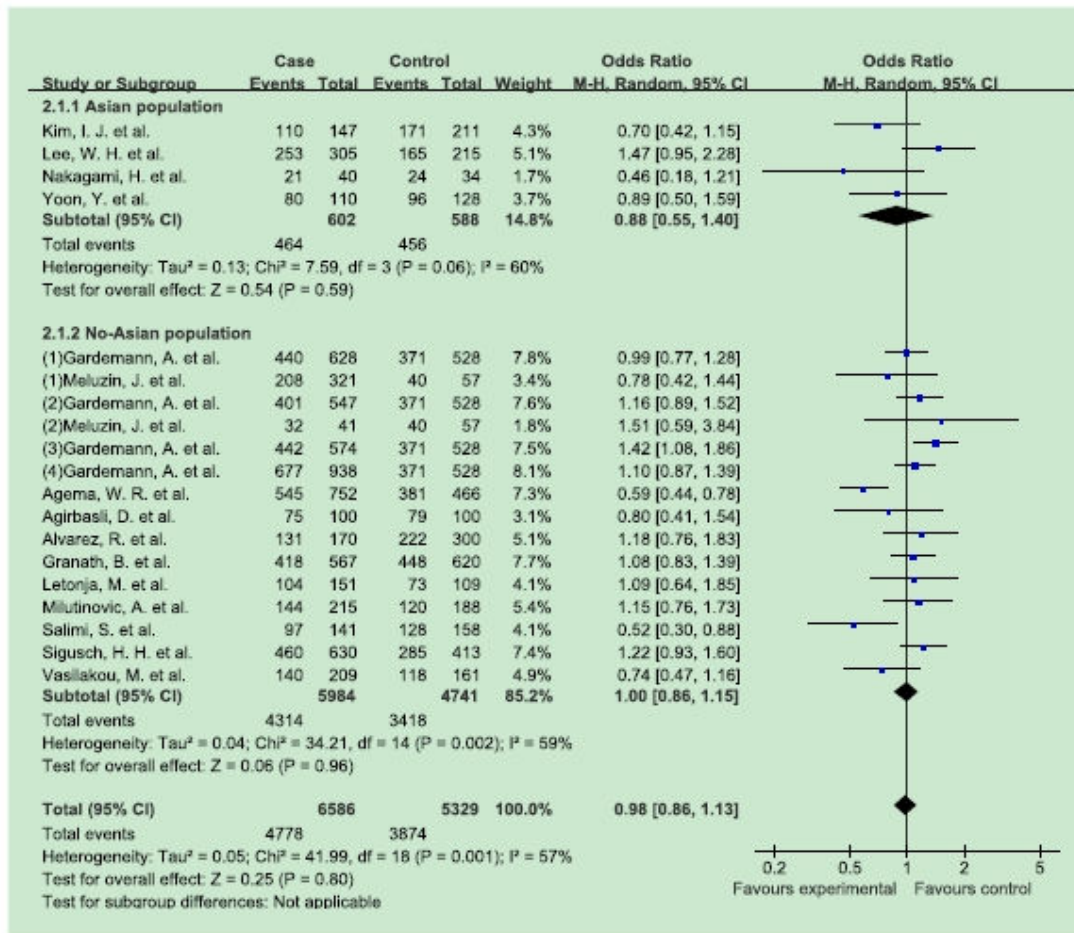


**Figure 4** Forest plots of ln (OR) with 95% CI for 4b/a allele studies with CAD. Blue squares indicate the ln (OR), with the size of the square inversely proportional to its variance, and horizontal lines represent the 95% CI. The pooled results are indicated by the shaded black diamond.

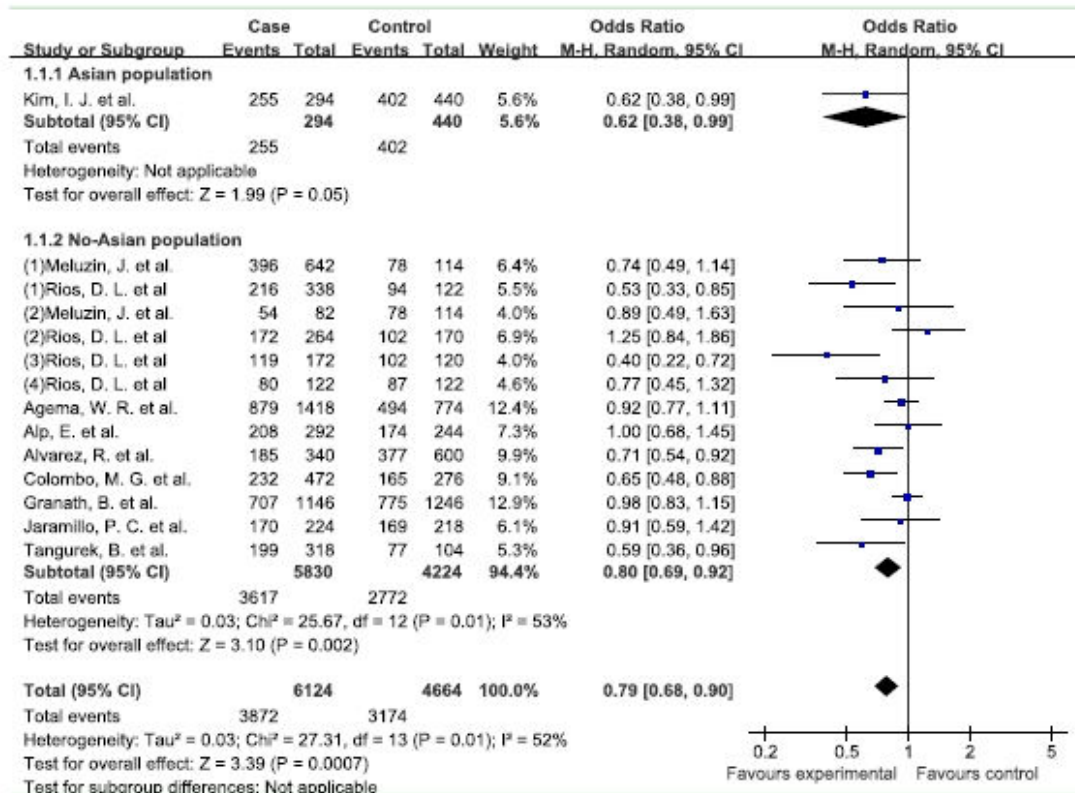




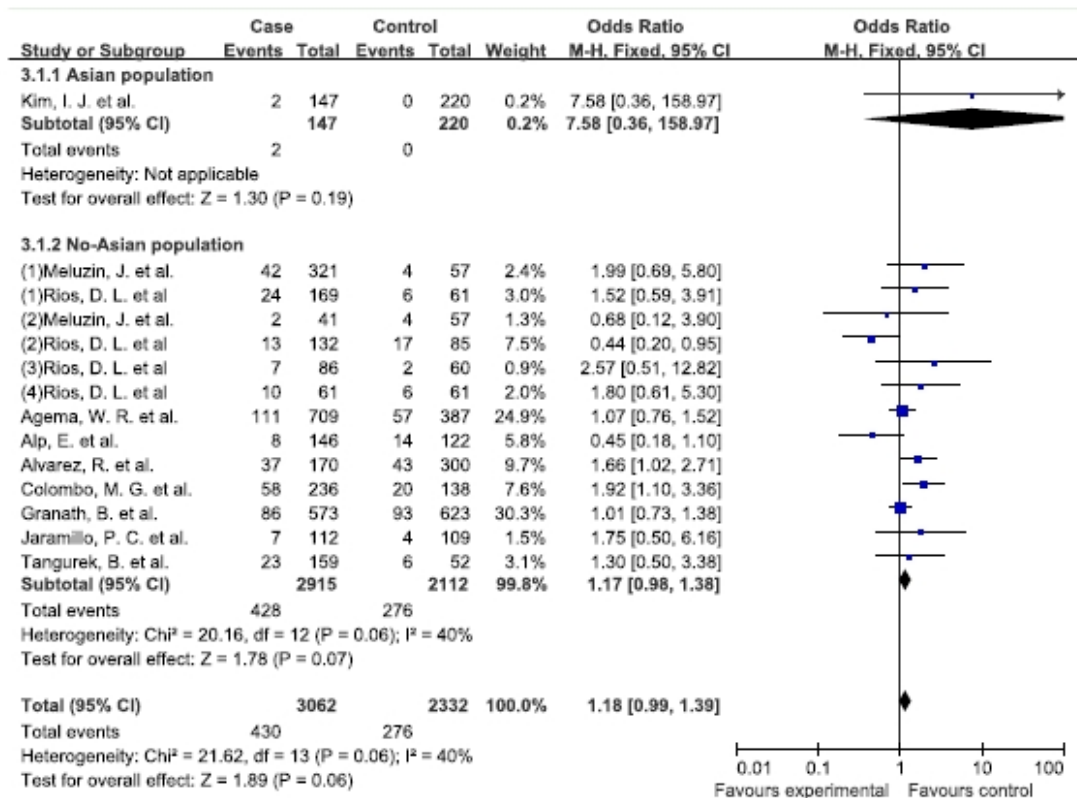
**Figure 5** Forest plots of  $\ln(\text{OR})$  with 95% CI for 4b/a ab+aa/bb studies with CAD. Blue squares indicate the  $\ln(\text{OR})$ , with the size of the square inversely proportional to its variance, and horizontal lines represent the 95% CI. The pooled results are indicated by the shaded black diamond.



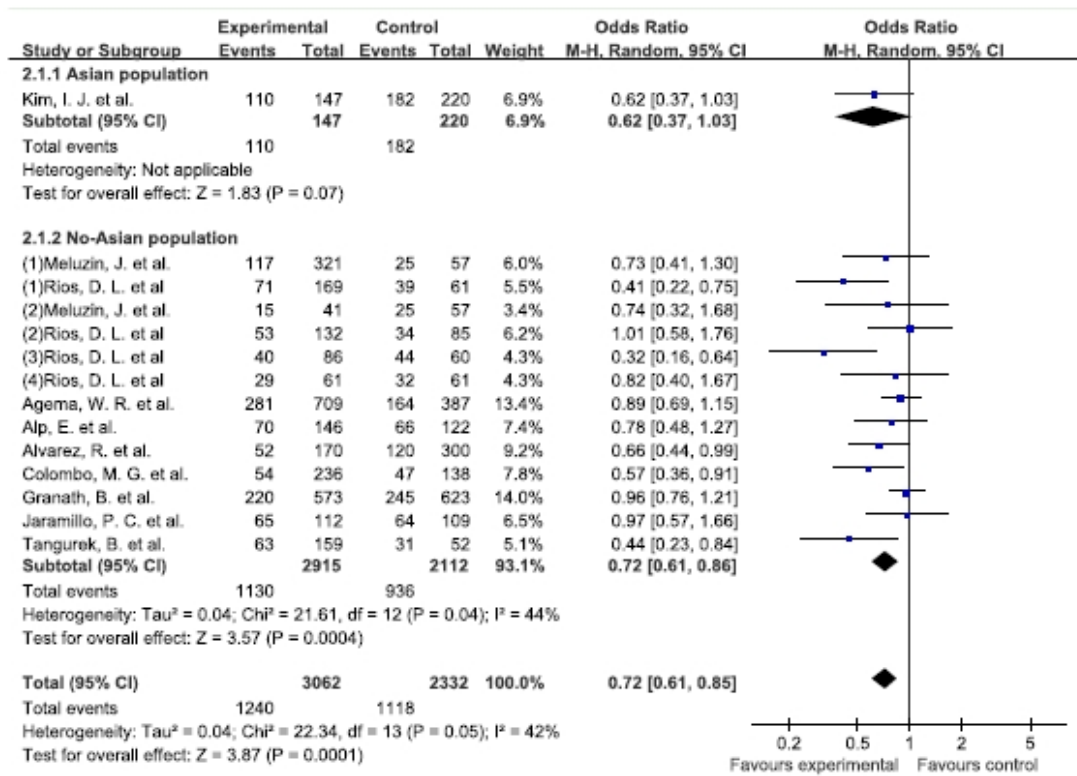
**Figure 6** Forest plots of  $\ln(\text{OR})$  with 95% CI for 4b/a ab+bb/aa studies with CAD. Blue squares indicate the  $\ln(\text{OR})$ , with the size of the square inversely proportional to its variance, and horizontal lines represent the 95% CI. The pooled results are indicated by the shaded black diamond.



**Figure 7** Forest plots of ln (OR) with 95% CI for T-786C allele studies with CAD. Blue squares indicate the ln (OR), with the size of the square inversely proportional to its variance, and horizontal lines represent the 95% CI. The pooled results are indicated by the shaded black diamond.

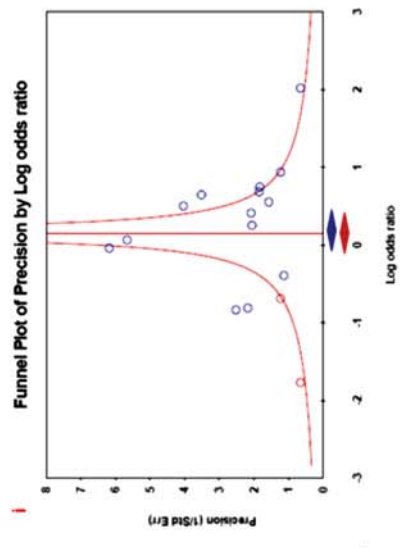
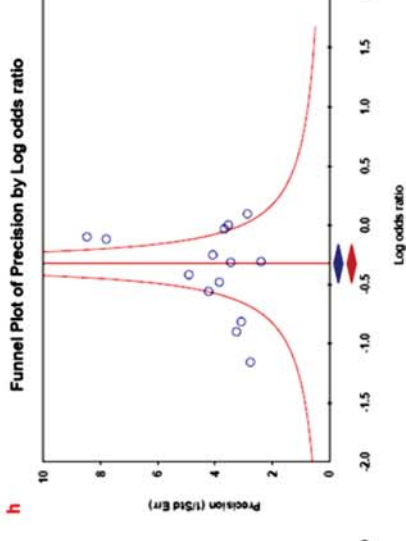
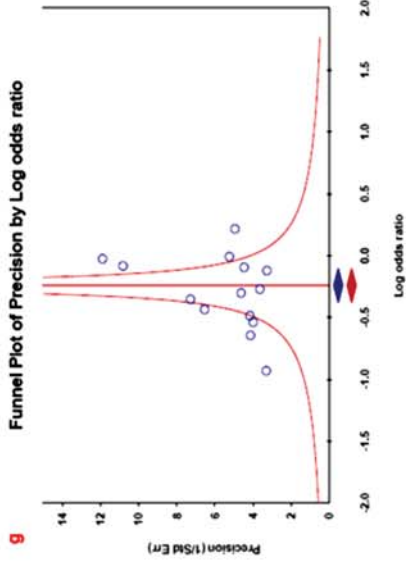
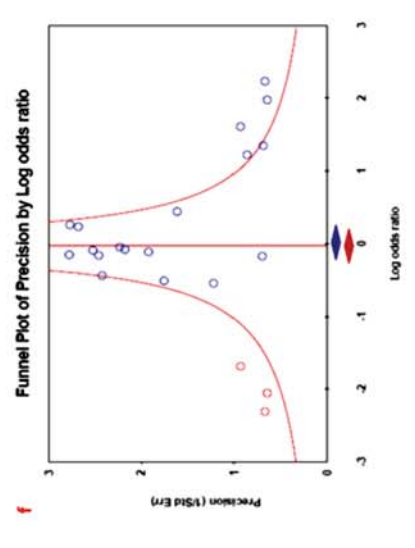
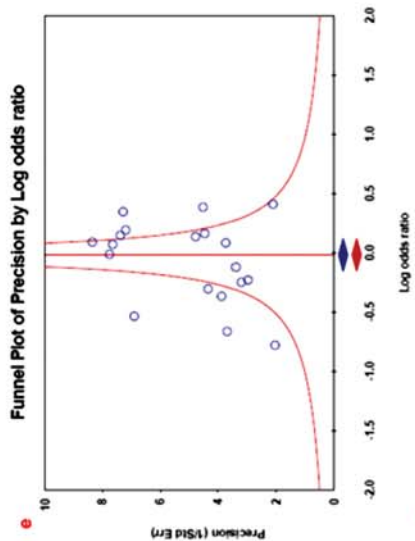
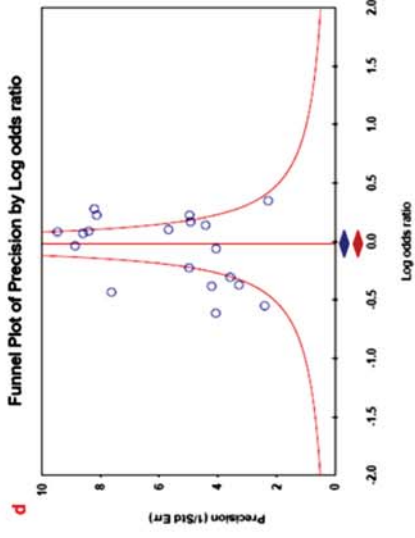
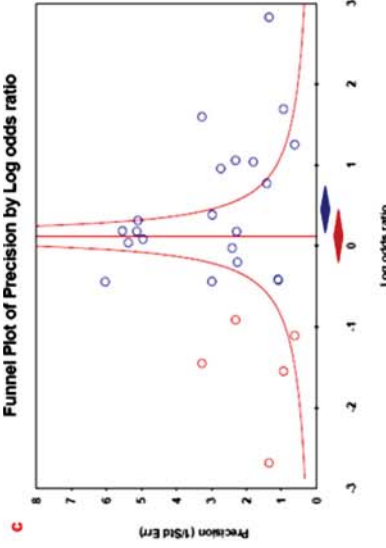
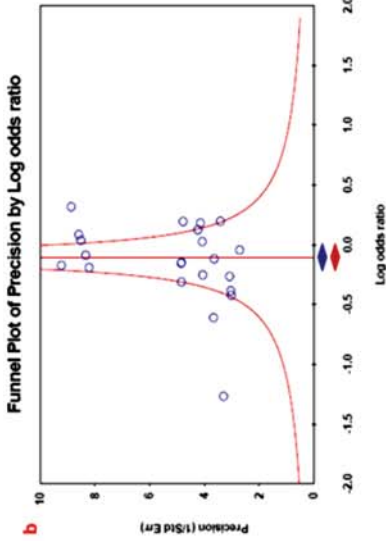
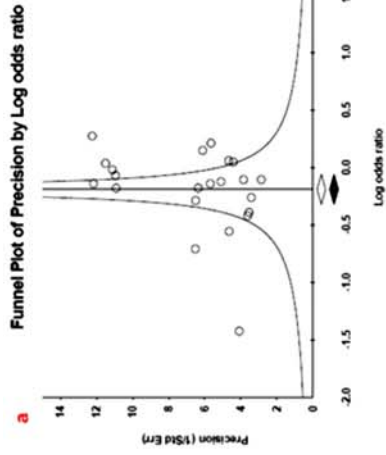


**Figure 8** Forest plots of ln (OR) with 95% CI for T-786C TC+CC/TT studies with CAD. Blue squares indicate the ln (OR), with the size of the square inversely proportional to its variance, and horizontal lines represent the 95% CI. The pooled results are indicated by the shaded black diamond.





**Figure 9** Forest plots of  $\ln(\text{OR})$  with 95% CI for T-786C TC+TT/CC studies with CAD. Blue squares indicate the  $\ln(\text{OR})$ , with the size of the square inversely proportional to its variance, and horizontal lines represent the 95% CI. The pooled results are indicated by the shaded black diamond.



**Figure 10** Egger's funnel plots of publication bias analysis for studies of CAD. The larger the deviation from the funnel curve of each study the more pronounced the asymmetry. Results from small studies will scatter widely at the bottom of the graph, with the spread narrowing among larger studies. a: G894T allele; b: G894T TG+TT/GG; c: G894T TG+GG/TT; d: 4b/a allele; e: 4b/a ab+aa/bb; f: 4b/a ab+bb/aa; g: T-786C allele; h: T-786C TC+CC/TT; i: T-786C TC+TT/CC