

Supplement Material

From assessor's instructions for scoring:

Skin Line

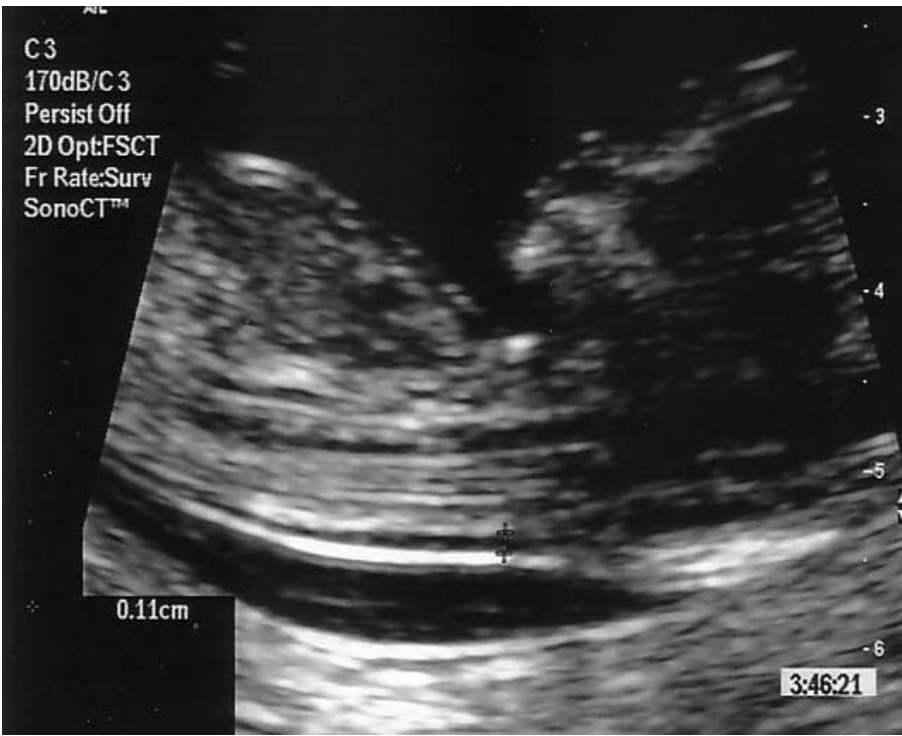
- A point is awarded if the two white lines are clearly visualised from the occiput down at least as far as the upper thorax. (skin and peri-spinal tissue)



Score = 1.

The 2 white lines are clearly demonstrated to the level of the mid-chest & beyond.

When scoring “skin line” be mindful of the fact that with some of the newer machines the 2 lines do not tend to be as crisp and white.



Score = 0

Visualisation of the upper NT can be compromised by shadowing from the jaw. In this example the upper NT is not adequately visualised.



Score = 0.

In this image the 2 lines of the NT are not adequately demonstrated.