

Supplementary material

Methods

Analysis of α_{tGDP} and $\beta\gamma_t$ preparations by one-dimensional SDS-PAGE. One microgram of either α_{tGDP} or $\beta\gamma_t$ were loaded onto a 10 % polyacrylamide gel and the proteins were subjected to SDS-PAGE. Thereafter, the gel was washed with 25 % (v/v) isopropanol for 15 min at 45 °C, stained with Coomossie Brilliant Blue for 2 h at 37 °C, washed with distilled H₂O and destained in a solution containing 10 % (v/v) glacial acetic acid and 10 % methanol.

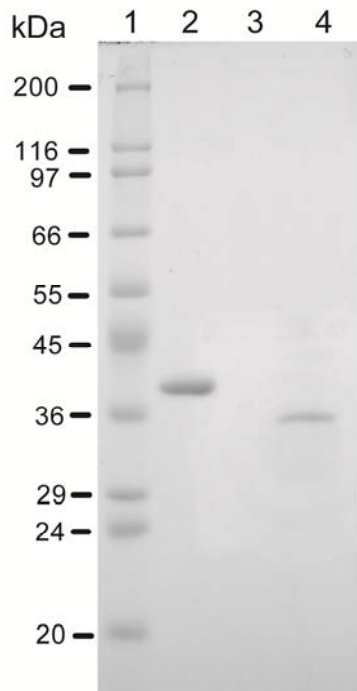


Fig. 1S. One-dimensional SDS-PAGE of α_{tGDP} or $\beta\gamma_t$ preparations. Transducin subunits (1 μg each) purified from bovine retina were loaded onto a 10 % polyacrylamide gel, separated by SDS-PAGE and stained with Coomassie Brilliant Blue. Lane 1, molecular mass standards; lane 2, α_{tGDP} , lane 3, vehicle; lane 4, $\beta\gamma_t$. Data are representative of two experiments.