

Sagittal

T

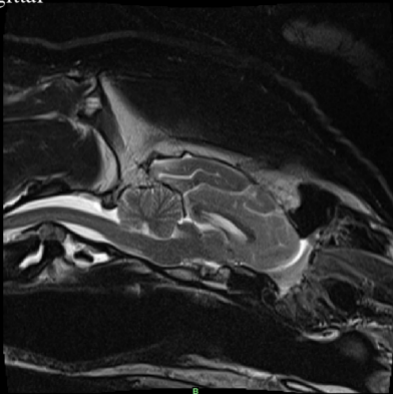
P

A

-36.25

B

54.98



Supplemental Figure 1. Magnetic resonance image (MRI) of a sagittal section through an adult male African lion skull and brain. Comparisons of endocranial volume to total brain volume in three planes revealed that total endocranial volume was on average 3.65% greater than brain volume. Scale bar = 1 cm