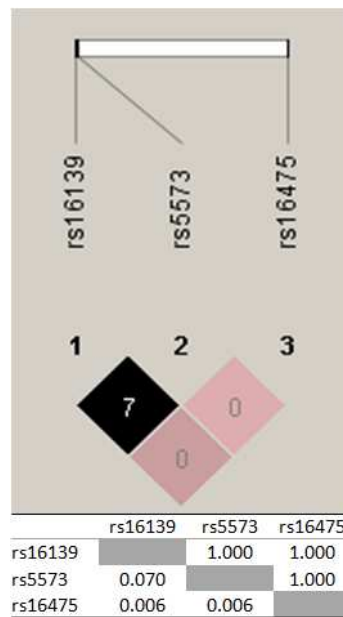


Table S1: Relationship between *NPY* haplotypes and alcohol dependence in Kota and Badaga populations.

Haplotype	Control n (%)	Alcohol dependence n (%)	OR (95% CI)	p value
Kota				
TGA	71 (62.2)	45 (56.9)	Reference	
CGA	18 (15.7)	16 (20.0)	1.40 (0.61-3.24)	0.388
TAA	18 (15.7)	14 (16.9)	1.23 (0.52-2.91)	0.612
TGG	4 (3.0)	1 (1.3)	0.29 (0.01-4.18)	0.397
CAA	4 (3.5)	4 (5.0)	1.58 (0.28-8.89)	0.531
Badaga				
TGA	42 (69.7)	45 (56.9)	Reference	
CGA	2 (2.5)	2 (3.1)	0.93 (0.07-13.42)	0.946
TAA	17 (27.1)	31 (39.4)	1.70 (0.78-3.76)	0.149
TGG	1 (0.8)	1 (0.6)	0.93 (0.01-74.99)	0.961

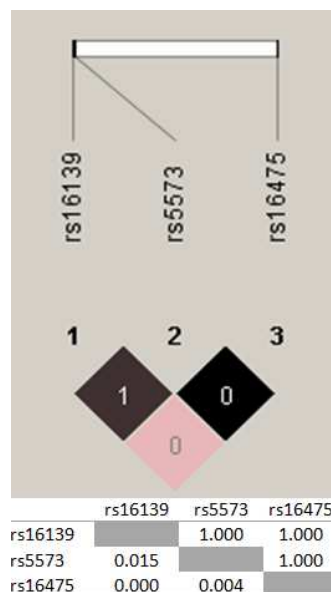
Figure S1: Pairwise linkage disequilibrium between the SNP markers of the NPY gene in Kota population.



Colour coding represents the D'/LOD values and the values in cells are r^2 multiplied by 100.

Values presented at the bottom of the figure are D' and r^2 , above and below diagonal, respectively.

Figure S2: Pairwise linkage disequilibrium between the SNP markers of the NPY gene in Badaga population.



Colour coding represents the D'/LOD values and the values in cells are r^2 multiplied by 100.

Values presented at the bottom of the figure are D' and r^2 , above and below diagonal, respectively.

Table S1: Relationship between *NPY* haplotypes and alcoholism in Kota and Badaga populations

Figure S1: Pairwise linkage disequilibrium between the SNP markers of the *NPY* gene in Kota population. Colour coding represents the D'/LOD values and the values in cells are r^2 multiplied by 100. Values presented at the bottom of the figure are D' and r^2 , above and below diagonal, respectively.

Figure S2: Pairwise linkage disequilibrium between the SNP markers of the *NPY* gene in Badaga population. Colour coding represents the D'/LOD values and the values in cells are r^2 multiplied by 100. Values presented at the bottom of the figure are D' and r^2 , above and below diagonal, respectively.