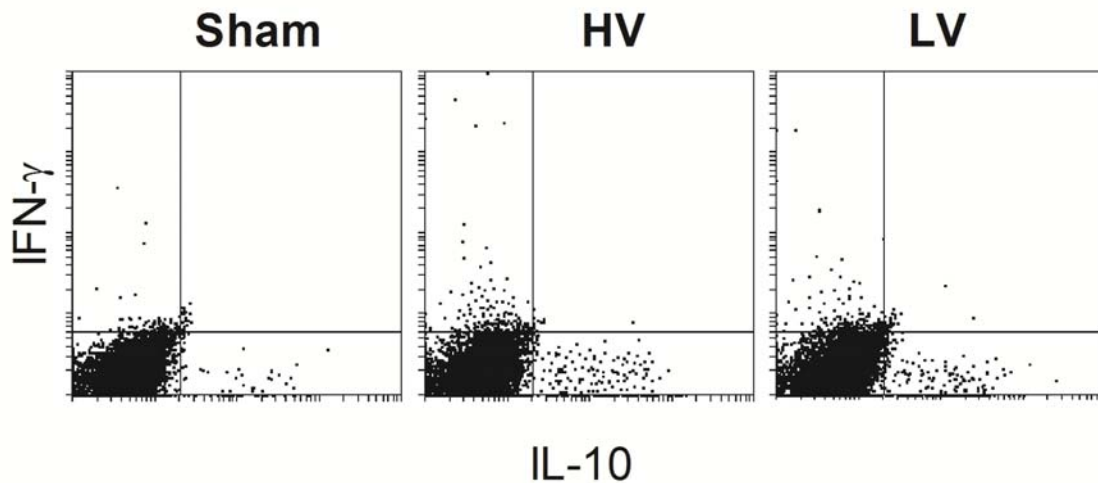
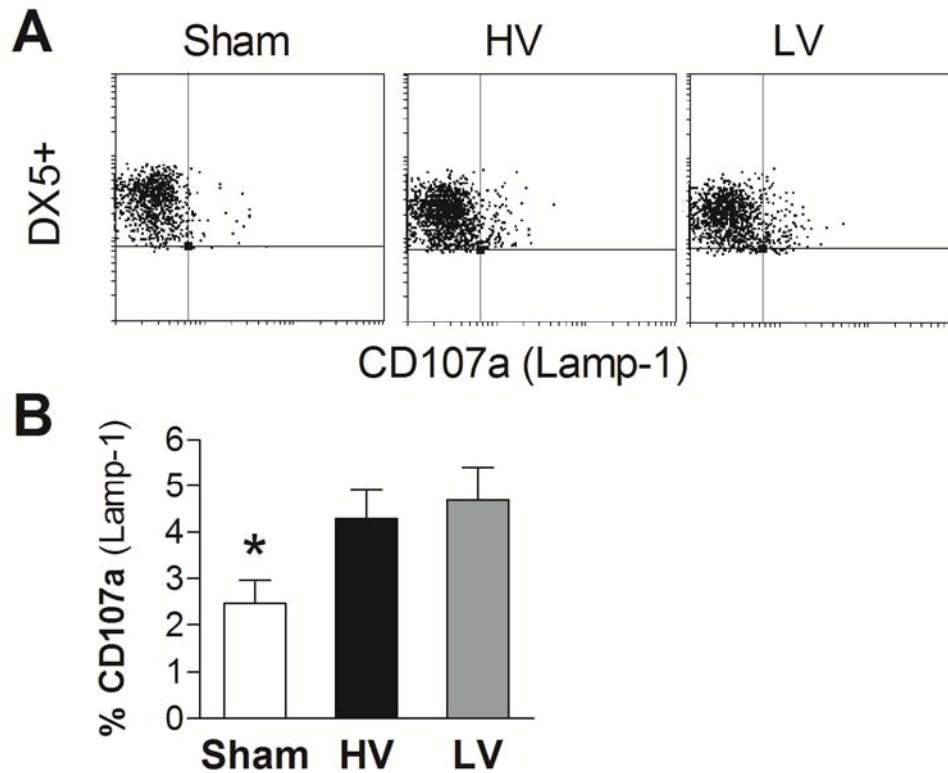


Supplementary figure 1 Alba Soto



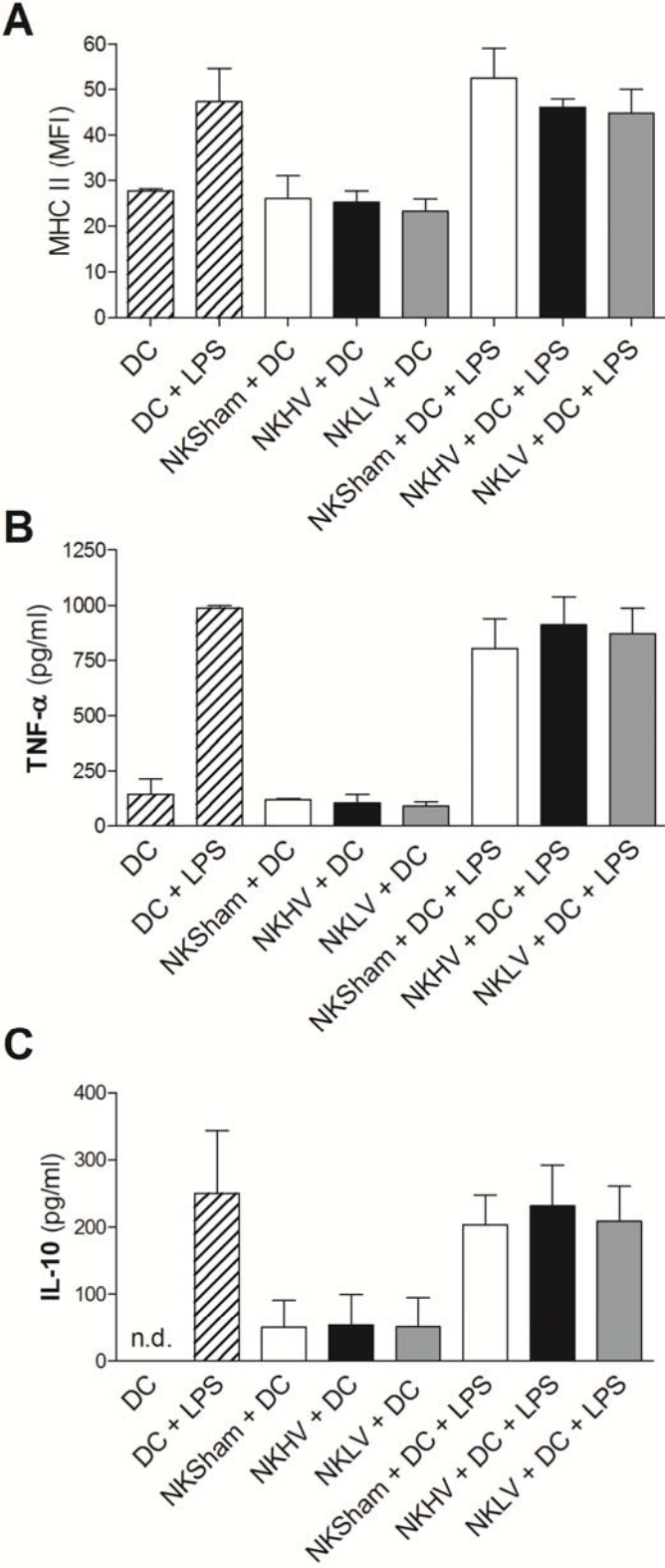
Supplementary figure 1. **NK cells from spleen do not simultaneously produce IFN- γ and IL-10 after in vivo infection.** C3H/HeN mice were infected with the HV and LV *T. cruzi* populations or Sham-infected. Dot plots represent intracellular production of IL-10 (PE-conjugated) and anti IFN- γ (Alexa Fluor conjugated) from spleen cell suspensions obtained from 18 h.p.i. infected mice gated in the DX5+ CD3- region. One representative experiment of three with three individual mice per group is shown.

Supplementary figure 2 Alba Soto



Supplementary figure 2. **NK cells increase their cytotoxic potential following *T. cruzi* infection.** The exocytosis of preformed granules was evaluated as the percent of DX5+CD3- cells from the peripheral blood compartment expressing CD107a from *T. cruzi* HV, LV or Sham-infected (18h.p.i.) C3H/HeN mice. Dot plot of one representative experiment with three to five pooled mice per group (A) and results of four independent experiments with three to five pooled mice expressed as means \pm SEM (B). ANOVA test (Bonferroni's post-hoc test) * $p < 0.05$ Sham vs. LV and HV.

Supplementary figure 3 Alba Soto



Supplementary figure 3. **Maturation/activation of iDCs by NK cells isolated from *T. cruzi* infected mice.** Mean fluorescence intensity (MFI) of surface expression of MHC II (Ie-K) by iDCs (A). TNF-alpha (B) and IL-10 (C) secretion in 24 h co-culture supernatants measured by double sandwich ELISA. Immature DCs ($1 \cdot 10^6$ cells/ml) were cultured for 24 h with fresh purified spleen NK cells from HV, LV and Sham-infected (18 h.p.i.) C3H/HeN mice at 1:1 ratio with or without LPS (100 $\mu\text{g}/\mu\text{l}$). n.d. Not detected. Results are presented as the means \pm SEM of values obtained from three independent experiments with three to four pooled mice per group.