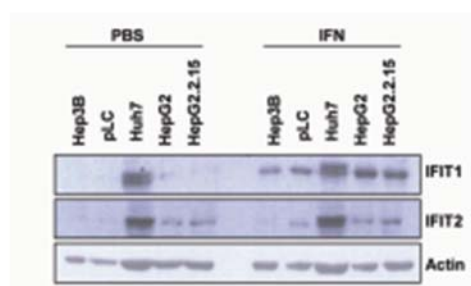
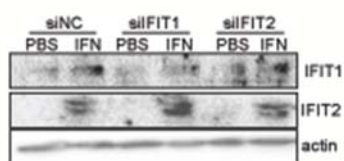


## Supplemental Figure 1



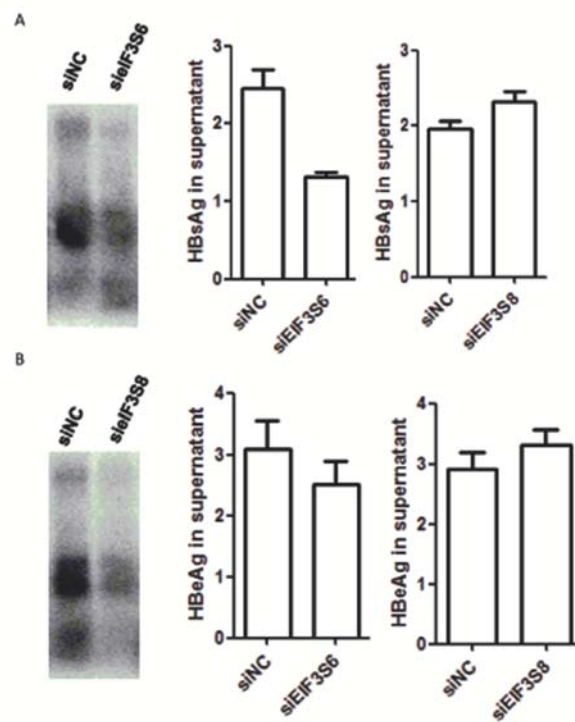
Sup Fig. 1. The expression of IFIT1 and IFIT2 in different hepatoma cell lines. Hep3B, pLC, Huh7, HepG2 and HepG2.2.15 were treated with IFN- $\alpha$  (100 U/ml) or PBS for 24 h. The expression of IFIT1 and IFIT2 protein was detected by western blot using specific antibodies.

## Supplemental Figure 2



Sup Fig. 2. Huh7 cells were transfected with siRNAs as indicated and incubated for 48 h. IFN- $\alpha$  was added to the medium for 24 h. The expression of IFIT1 and IFIT2 protein was detected by western blot using specific antibodies. It showed that IFN was able to stimulate IFIT1 and IFIT2 expression after the siRNA transfection, consistent with the results of real time RT-PCR.

### Supplemental Figure 3



Sup Fig. 3. The silencing of eIF3S6 and eIF3S8 inhibit HBV replication. Huh7 cells were transfected with siNC, siIF3S6 (A) or siIF3S8 (B), incubated for 24 h, then reseeded into 6-well-plates. Second transfection with pSM2 and siRNAs was performed on the next day. 3 days later, core associated HBV DNA in cells was extracted and analyzed by Southern blot. HBsAg and HBeAg secreted in the supernatants were detected by CMIA.

**Supplemental table 1** The list of genes screened for their role in HBV replication

| <b>GenBank</b> | <b>Title</b>   | <b>Symbol</b> |
|----------------|--|---------------|
| AK022014.1     | A kinase (PRKA) anchor protein 13  | AKAP13        |
| NM_004723.1    | rho/rac guanine nucleotide exchange factor (GEF) 2   | ARHGEF2       |
| NM_004335.2    | bone marrow stromal cell antigen 2   | BST2          |
| NM_007061.1    | CDC42 effector protein (Rho GTPase binding) 1  | CDC42EP1      |
| NM_014314.1    | DEAD (Asp-Glu-Ala-Asp) box polypeptide 58  | DDX58         |
| S69899.1       | dopamine receptor D2   | DRD2          |
| AF202063.1     | fibroblast growth factor receptor 4  | FGFR4         |
| NM_005101.1    | interferon, alpha-inducible protein (clone IFI-15K)  | G1P2          |
| NM_022873.1    | interferon, alpha-inducible protein (clone IFI-6-16)   | G1P3          |
| NM_005532.1    | interferon, alpha-inducible protein 27   | IFI27         |
| NM_001548.1    | interferon-induced protein with tetratricopeptide repeats 1                                  | IFIT1         |
| NM_003641.1    | interferon induced transmembrane protein 1 (9-27)  | IFITM1        |
| NM_006435.1    | interferon induced transmembrane protein 2 (1-8D)  | IFITM2        |
| BF338947       | interferon induced transmembrane protein 3 (1-8U)  | IFITM3        |
| NM_006084.1    | interferon-stimulated transcription factor 3, gamma 48kDa                                    | ISGF3G        |
| AL121994       | similar to Interferon-induced transmembrane protein 3<br>(Interferon-inducible protein 1-8U) | LOC391020     |
| NM_002462.1    | myxovirus (influenza virus) resistance 1   | MX1           |
| NM_002534.1    | 2',5'-oligoadenylate synthetase 1, 40/46kDa  | OAS1          |
| NM_006187.1    | 2'-5'-oligoadenylate synthetase 3, 100kDa  | OAS3          |
| AI825926       | phospholipid scramblase 1  | PLSCR1        |
| NM_021105.1    | phospholipid scramblase 1  | PLSCR1        |
| NM_007315.1    | signal transducer and activator of transcription 1, 91kDa                                    | STAT1         |
| NM_006289.1    | talin 1  | TLN1          |
| AA083478       | tripartite motif-containing 22   | TRIM22        |
| NM_000550.1    | tyrosinase-related protein 1   | TYRP1         |
| NM_004223.1    | ubiquitin-conjugating enzyme E2L 6   | UBE2L6        |