

Fig. S1 Study flow diagram. *Six articles were found, two of which are subgroup analysis results of the other studies.

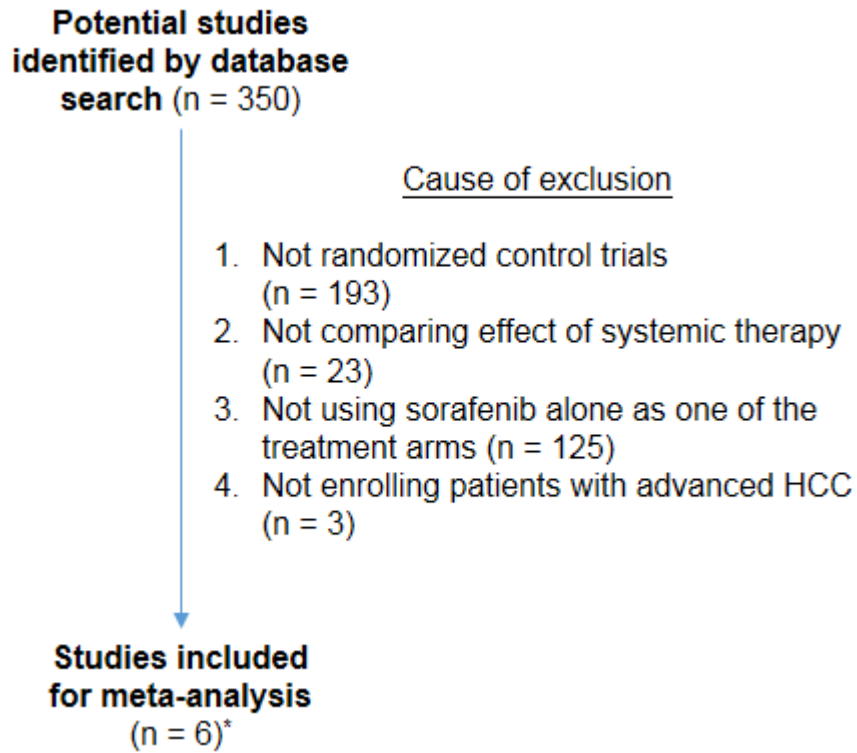


Fig. S2 Overall survival (OS) and hazard ratios (HRs) of all-cause deaths of all patients from the 4 studied clinical trials (CI = confidence interval; W = weight of individual studies).

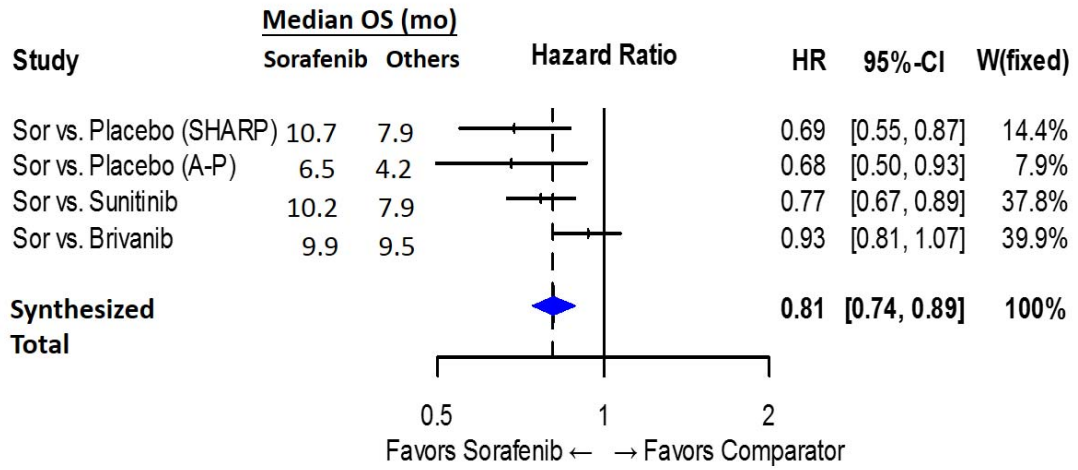


Fig. S3 Median overall survival (OS) of clinical trials comparing sorafenib to a placebo, sunitinib, or brivanib with patients grouped according to their etiologies. The data comparing sorafenib to placebo was collected from the SHARP study.

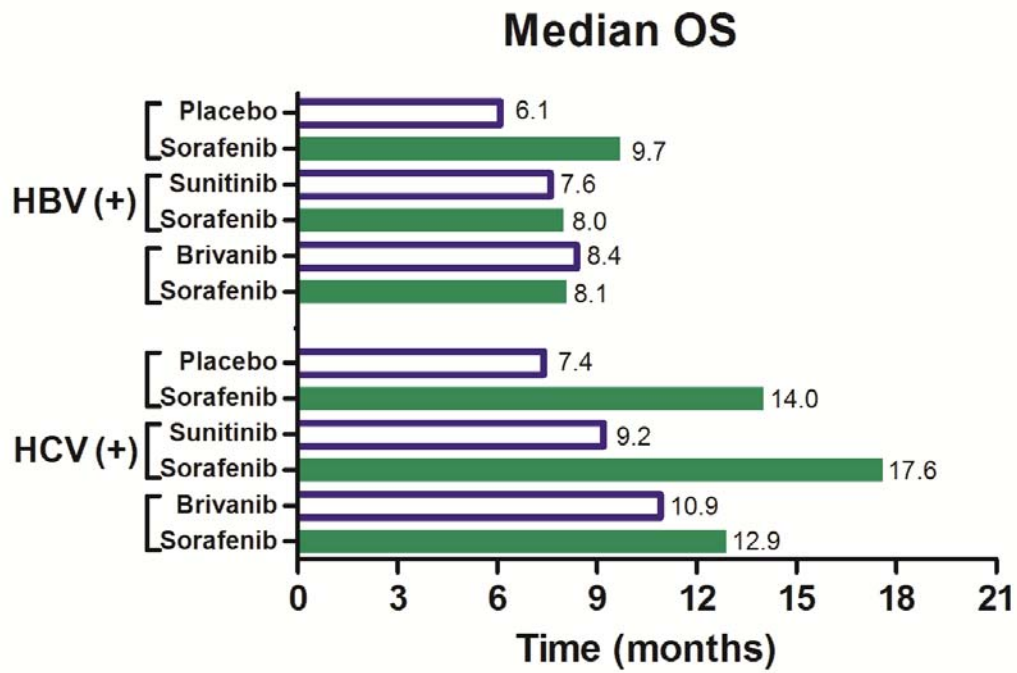


Table S1. The heterogeneity test to compare the synthesized hazard ratios of specific patient subgroups.

	Overall		Within group		Between group	
	Q	<i>p</i>	Q	<i>p</i>	Q	<i>p</i>
Asia	9.30	0.098	3.04	0.219	1.77	0.183
Non-Asia			4.49	0.106		
ECOG PS = 0	7.71	0.173	2.32	0.313	0.15	0.699
ECOG PS = 1,2			5.24	0.073		
With MVI or EHS	9.72	0.084	3.67	0.160	1.5	0.221
Without MVI or EHS			4.55	0.103		

Abbreviations: ECOG = Eastern Cooperative Oncology Group performance status; MVI = macrovascular invasion; EHS = extrahepatic spread