

Overexpression of lncRNA PVT1 predicts advanced clinicopathological features and serves as an unfavorable risk factor for survival of patients with gastrointestinal cancers

(1) OS associated with PVT1 expression in digestive system malignancies.

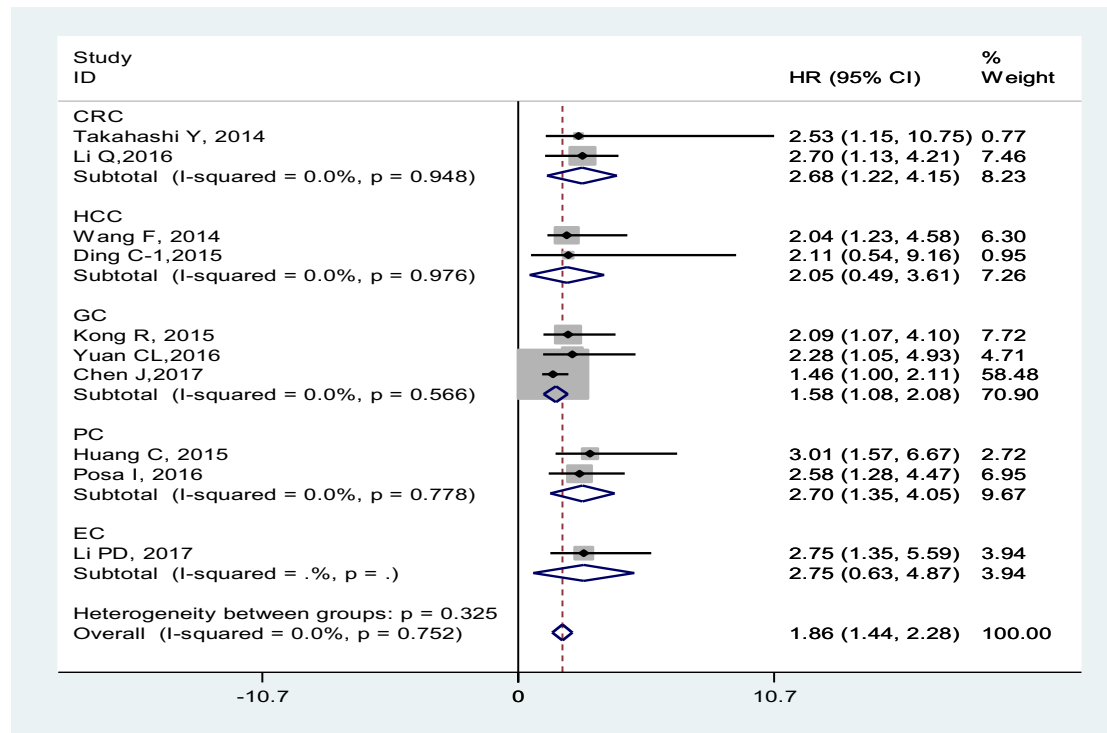


Figure S1: Meta-analysis for the pooled HRs of OS stratified by the tumor type.

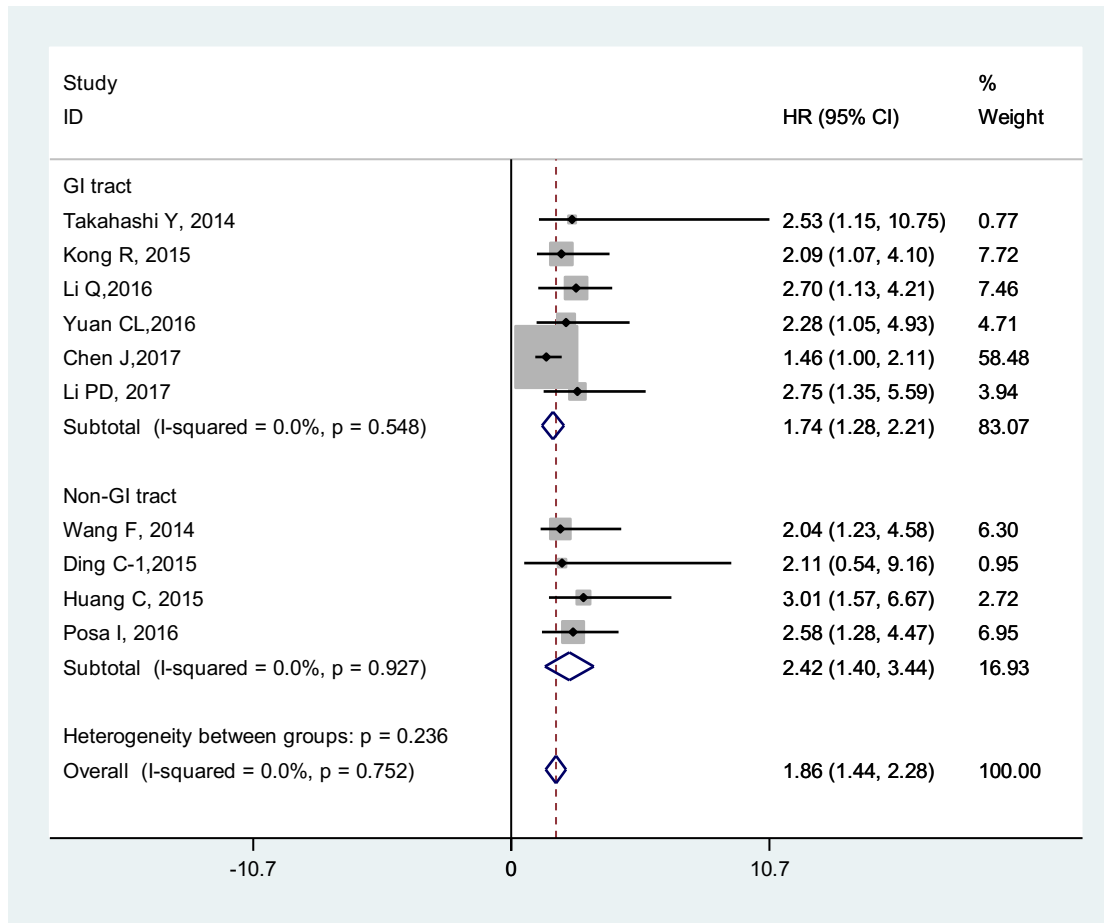


Figure S2: Meta-analysis for the pooled HRs of OS stratified by the tumor location .

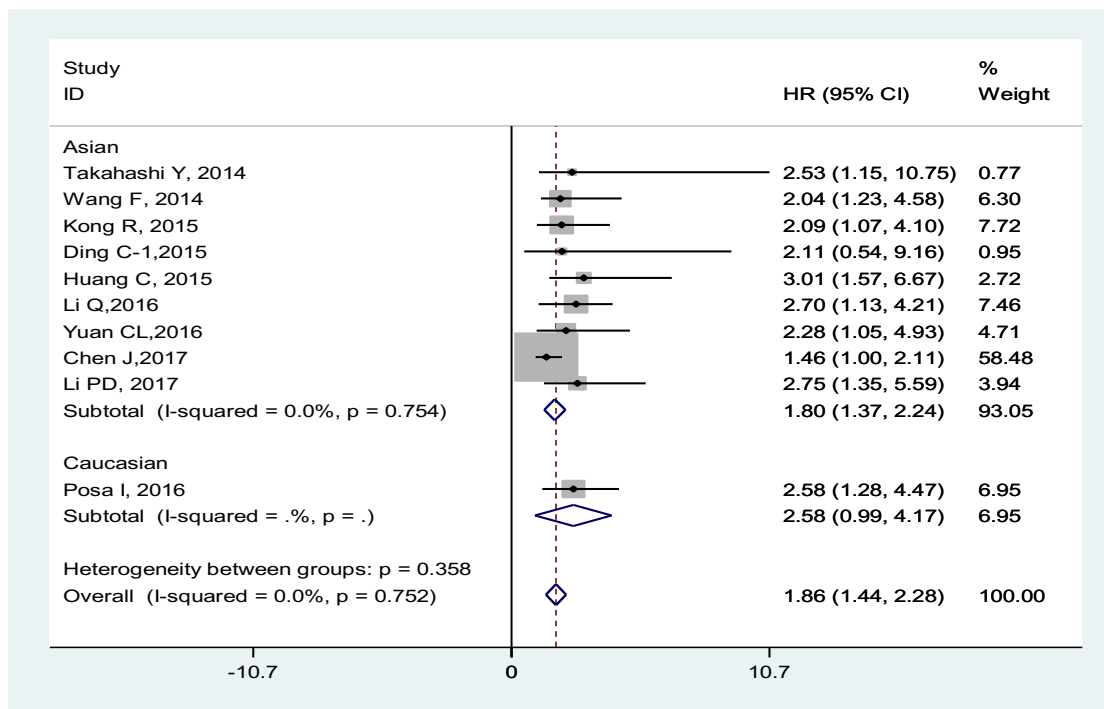


Figure S3: Meta-analysis for the pooled HRs of OS stratified by the ethnicity.

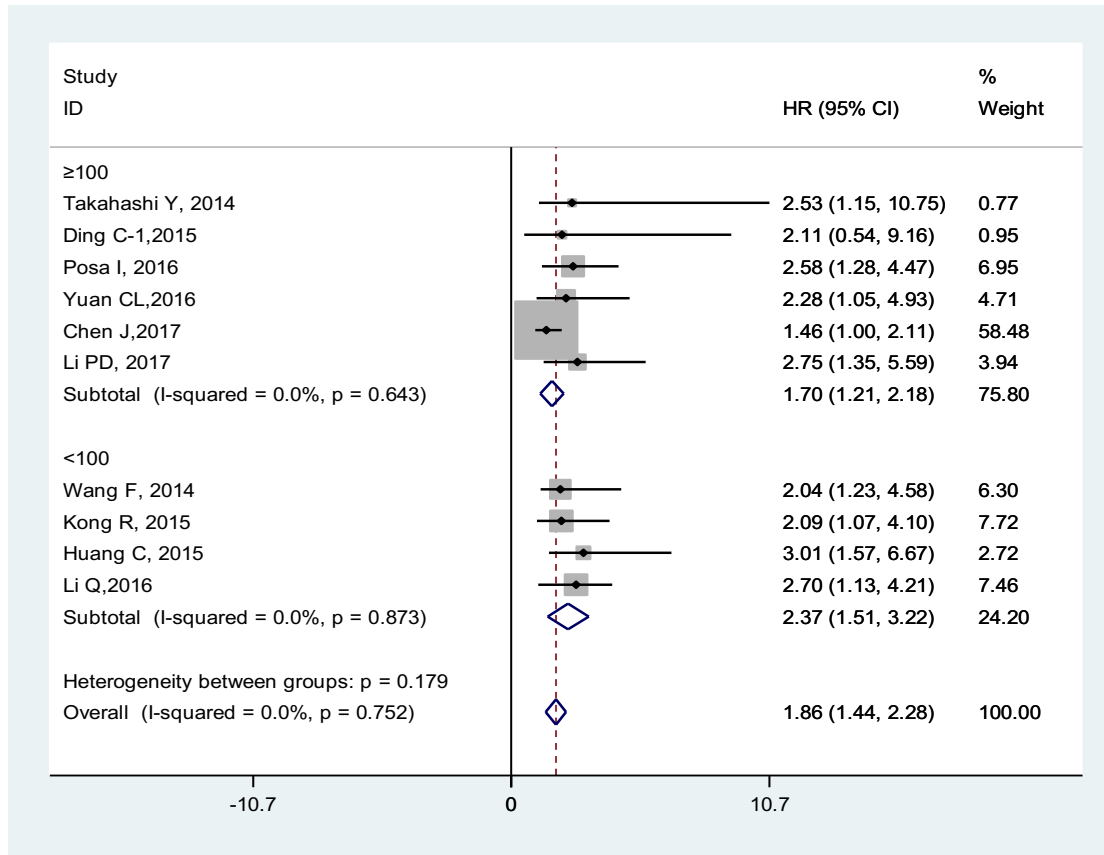


Figure S4: Meta-analysis for the pooled HRs of OS stratified by the sample size.

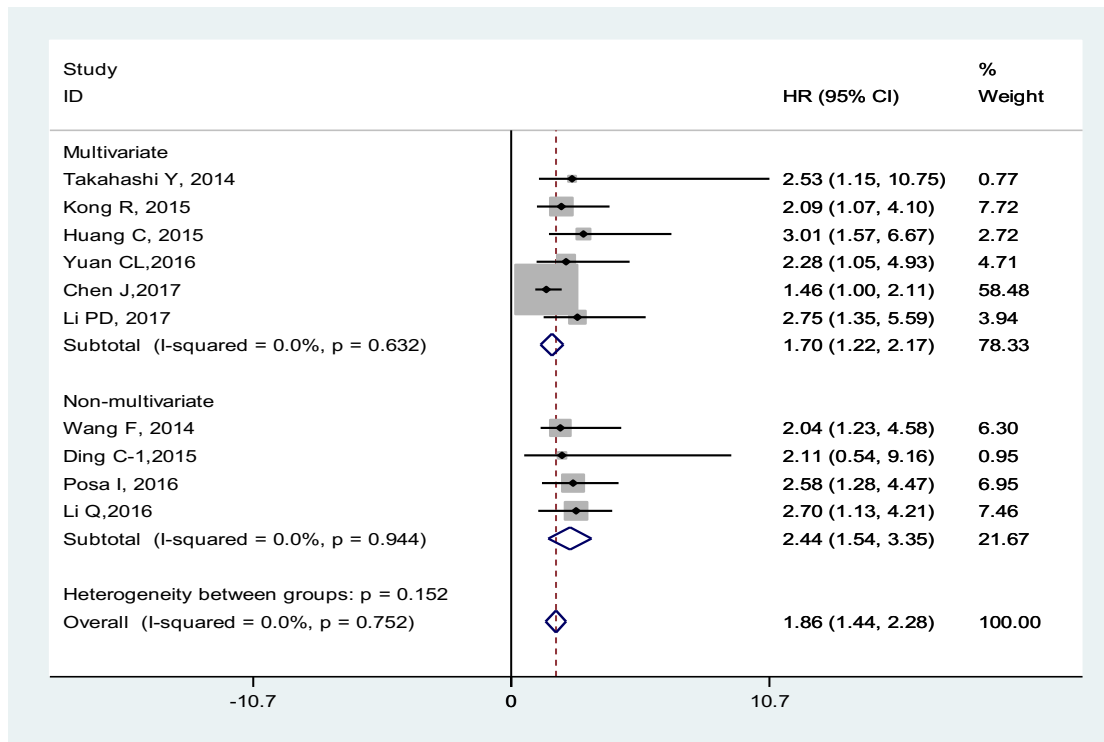


Figure S5: Meta-analysis for the pooled HRs of OS stratified by the analysis type.

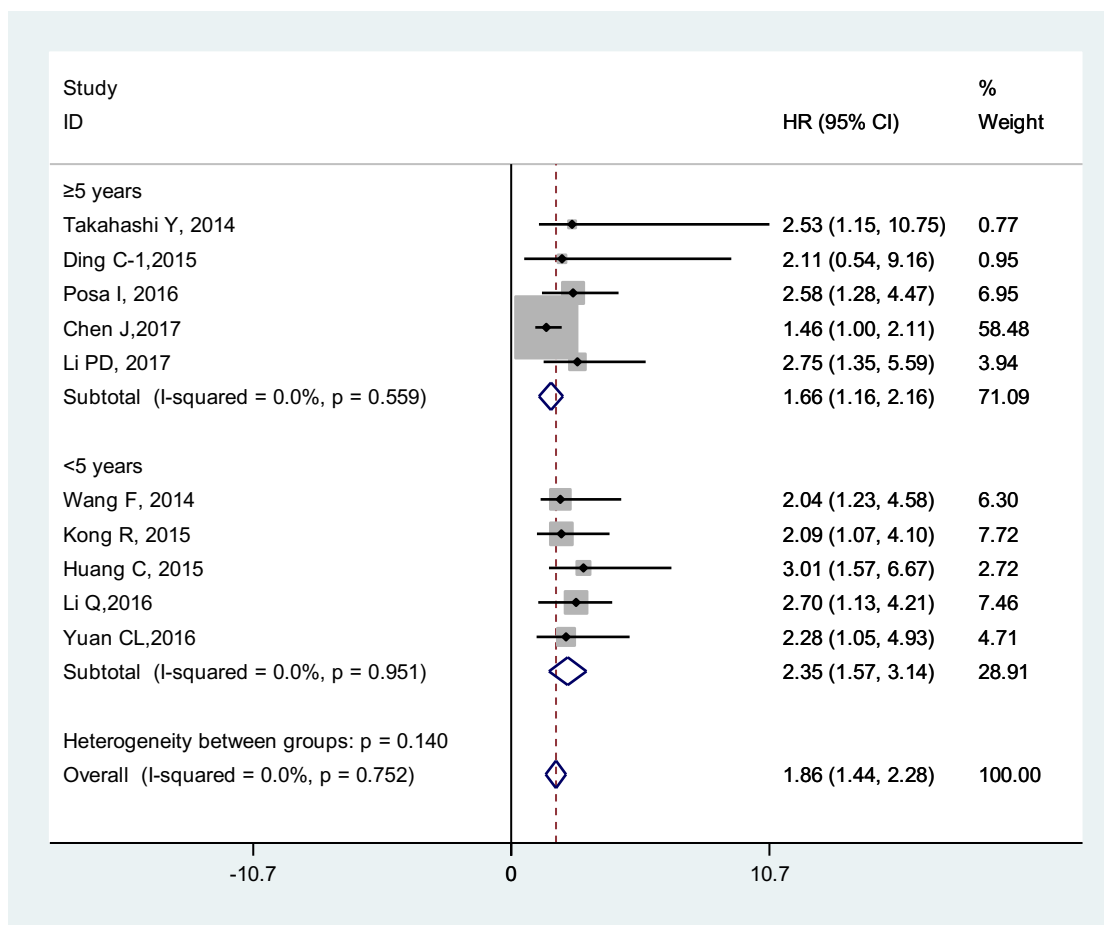


Figure S6: Meta-analysis for the pooled HRs of OS stratified by the follow-up time.

(2) Association between PVT1 expression and clinical characteristics in digestive system malignancies.

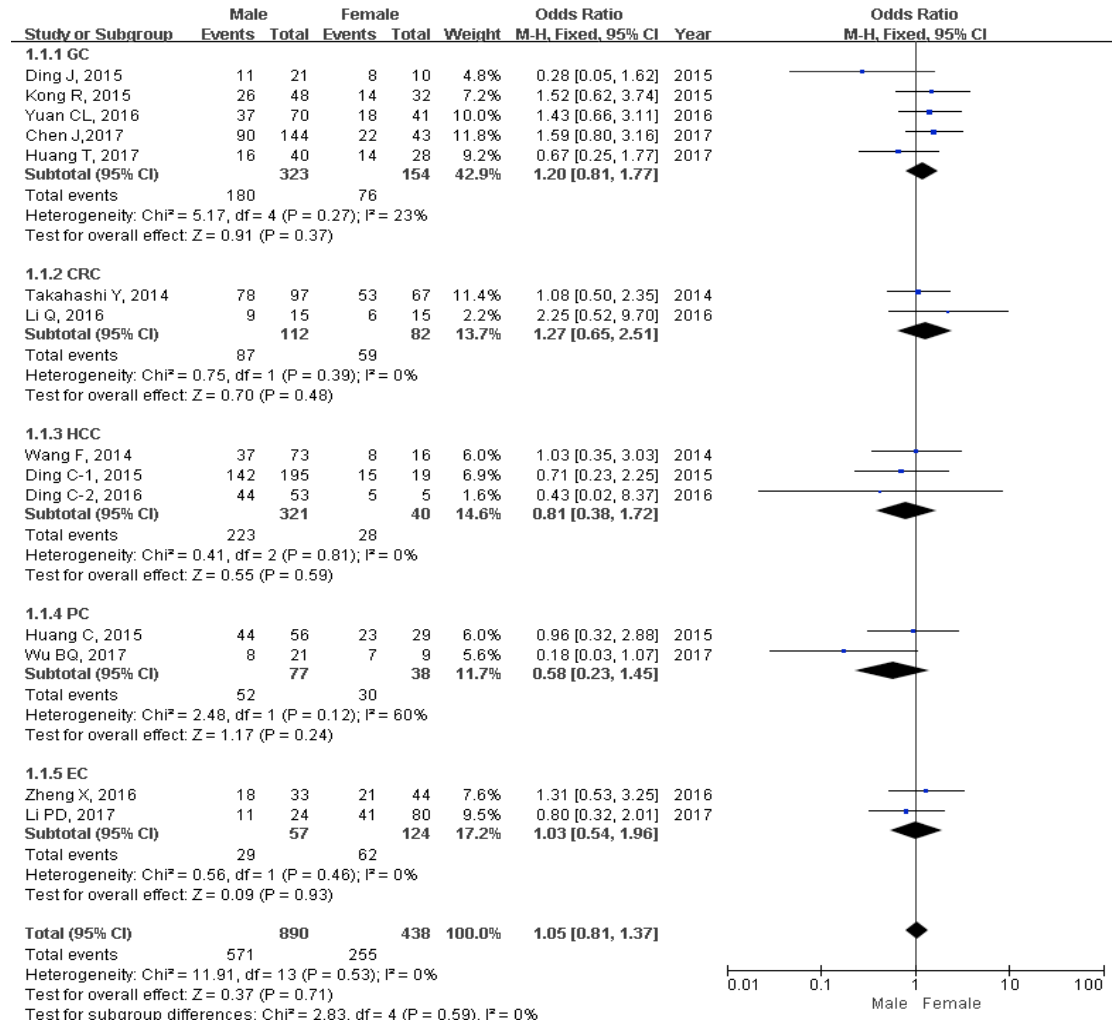


Figure S7. Forest plot of OR for the relationship between high PVT1 expression and gender.

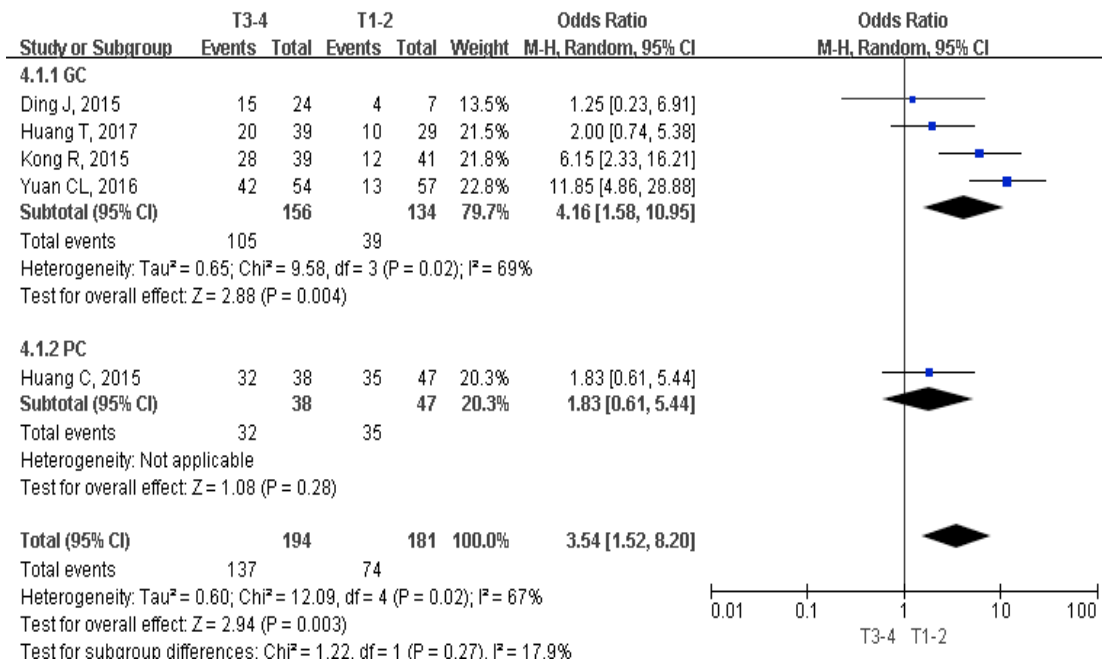


Figure S8. Forest plot of OR for the relationship between high PVT1 expression and tumor invasion depth.

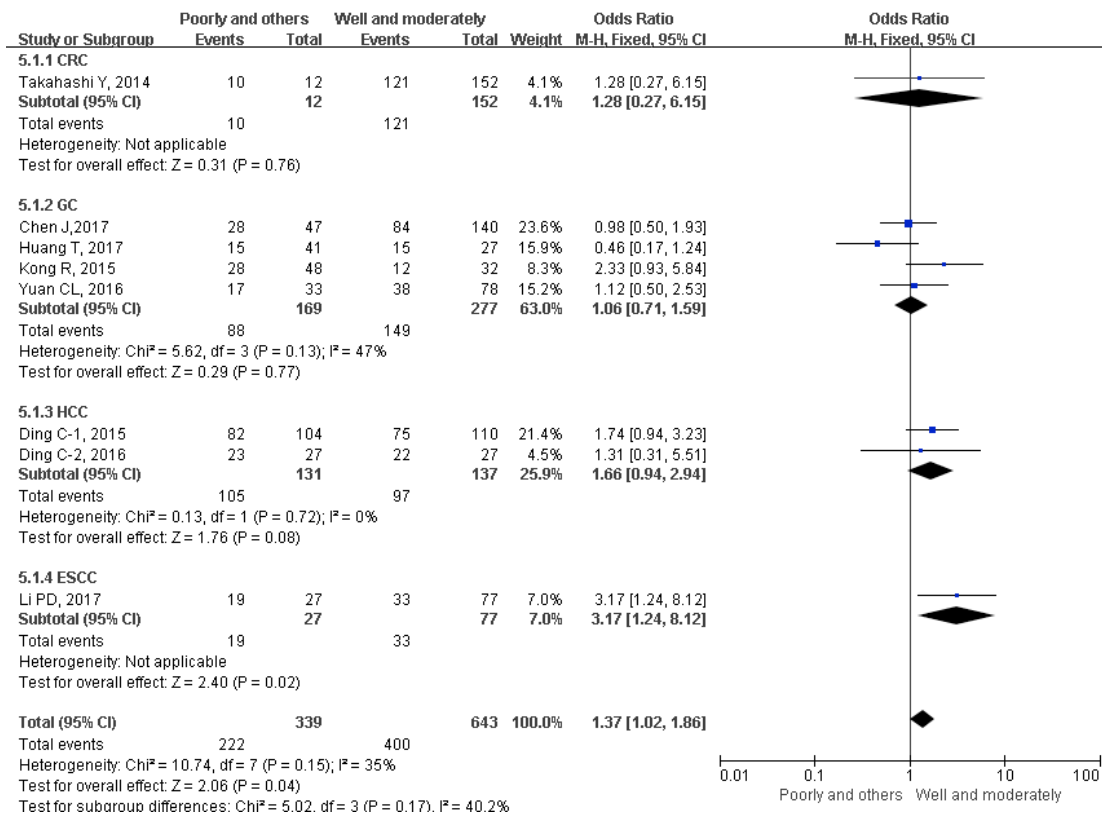


Figure S9. Forest plot of OR for the relationship between high PVT1 expression and histopathological grade.

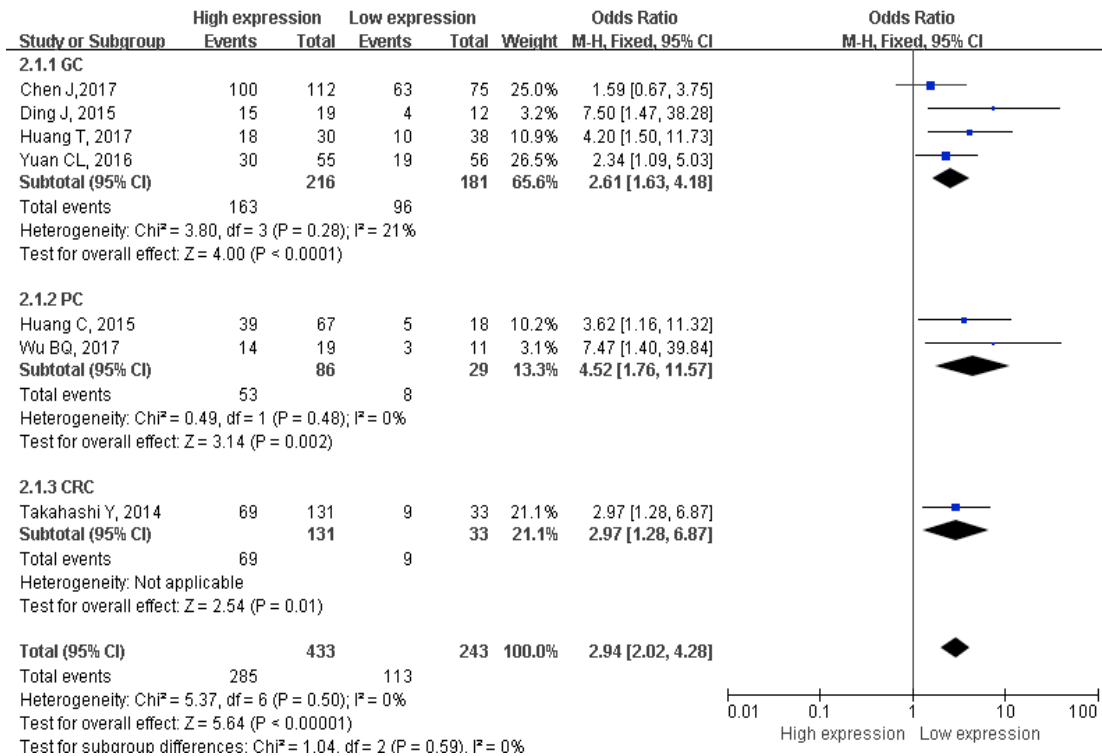


Figure S10. Forest plot of OR for the relationship between high PVT1 expression and lymph node metastasis.

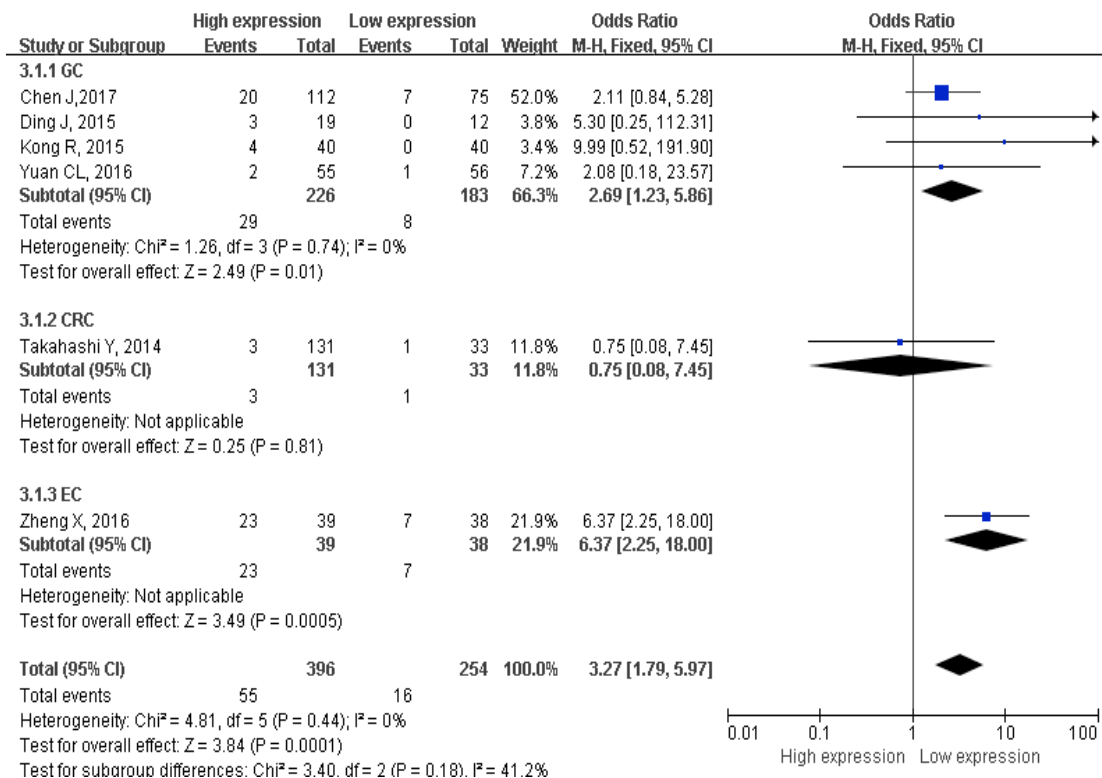


Figure S11. Forest plot of OR for the relationship between high PVT1 expression and distant metastasis.

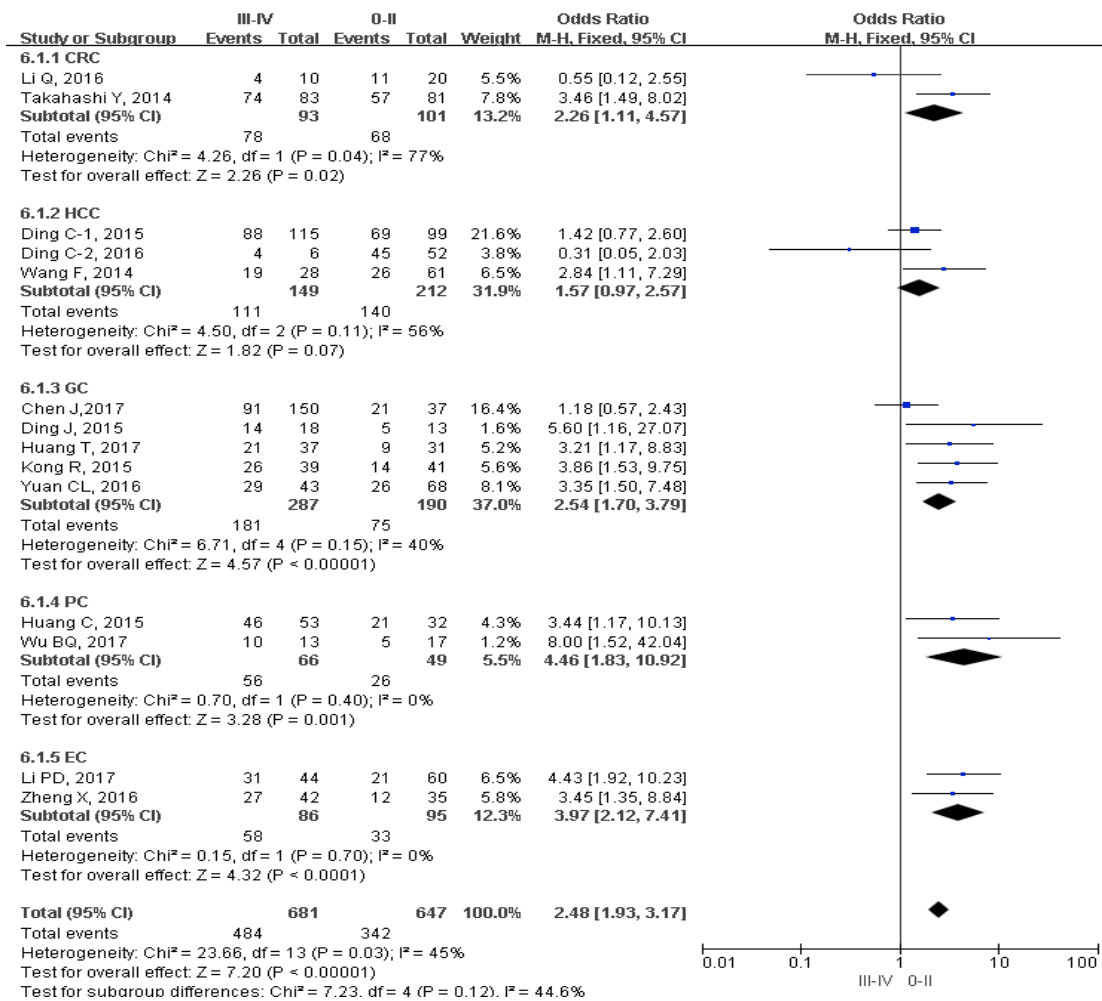


Figure S12. Forest plot of OR for the relationship between high PVT1 expression and TNM stage.