

Manuscript MMB-201702004

Agro-wastes as feedstock for the production of endo- β -xylanase from *Cohnella* sp. strain AR92

Online supplementary table headings

Online supplementary table 1. Plackett-Burman design matrix and the response variables evaluated

Online supplementary table 2. Estimated effects for xylanase production and growth of *Cohnella* sp. strain AR92 from the Plackett-Burman design

Online supplementary table 3. Box-Behnken matrix for the three selected factors and their experimental and predicted values of xylanase activity

Online supplementary table 4. Estimated effects and statistical analysis for xylanase production from the results of the Box-Behnken design

Online supplementary figure legends

Online supplementary fig. 1. Maximum-likelihood (**a**) and maximum-parsimony (**b**) phylogenetic trees based on 16S rRNA gene sequences, showing the position of strain AR92 and related taxa. Bootstrap values are shown as percentages of 100 replicates; only values above 70% are shown. The four species of the genus *Paenibacillus* were used as outgroup. Bar, 0.02 substitutions per nucleotide position. Accession numbers are shown after names

Online supplementary fig. 2. Effect of different nitrogen sources on the *Cohnella* sp. AR92 growth (**●**, biomass at 96 h) and xylanase production at (**■**) 48 h; (**■**) 96 h and (**■**) 192 h. Error bars represent the standard deviation from at least three independent experiments

Online supplementary fig. 3. Response surface and contour plots of the combined effects on xylanase production (**a**) of yeast extract and phosphor concentrations, and (**b**) of yeast extract and carbon (OH-SCB) concentrations

Online supplementary table 1. Plackett-Burman design matrix and the response variables evaluated

Run	Coded values*						Xylanase Activity [IU/ml]	Biomass [CFU/ml]
	C	N	Ca ²⁺	Mg ²⁺	YE	P		
1	-1	+1	+1	+1	+1	+1	11.2	7.0·10 ⁷
2	+1	-1	-1	+1	+1	-1	4.3	1.2·10 ⁷
3	-1	-1	-1	-1	+1	-1	5.2	9.0·10 ⁶
4	+1	+1	+1	+1	-1	-1	0.9	3.0·10 ⁶
5	+1	-1	+1	-1	+1	+1	4.9	4.5·10 ⁷
6	+1	-1	-1	-1	-1	+1	0.9	5.0·10 ⁶
7	+1	+1	-1	-1	+1	+1	5.3	2.5·10 ⁸
8	+1	-1	+1	+1	-1	+1	4.8	2.0·10 ⁶
9	+1	+1	+1	-1	-1	-1	0.5	2.3·10 ⁶
10	-1	-1	-1	-1	-1	-1	0.8	7.2·10 ⁵
11	+1	-1	+1	+1	+1	+1	8.1	7.0·10 ⁷
12	-1	+1	+1	-1	-1	+1	3.3	2.0·10 ⁷
13	-1	-1	+1	+1	-1	-1	3.1	8.8·10 ⁵
14	-1	-1	-1	+1	-1	+1	3.5	2.5·10 ⁶
15	+1	+1	-1	+1	-1	+1	2.5	7.0·10 ⁶
16	+1	+1	+1	+1	+1	-1	4.4	2.0·10 ⁷
17	+1	+1	-1	-1	-1	-1	0.2	7.5·10 ⁵
18	+1	-1	-1	+1	+1	-1	4.1	1.5·10 ⁷
19	-1	+1	-1	+1	-1	-1	3.7	8.5·10 ⁵
20	-1	+1	-1	+1	+1	+1	13.7	5.5·10 ⁷
21	-1	+1	-1	-1	+1	+1	7.9	2.5·10 ⁷
22	+1	-1	+1	-1	-1	+1	0.9	9.5·10 ⁶
23	-1	-1	+1	-1	+1	-1	5.4	7.5·10 ⁶
24	-1	+1	+1	-1	+1	-1	4.2	6.0·10 ⁶

* Coded value (-1) represented the low levels of the studied factors (g/l): OH-SCB (C) 5.0; (NH₄)₂SO₄ (N) 0.5; CaCl₂·2H₂O (Ca²⁺) 0.0; MgCl₂·6H₂O (Mg²⁺) 0.0; yeast extract (YE) 0.1 and Na₂HPO₄/KH₂PO₄ (P) 0.35/0.1. Coded value (+1) denoted the high levels of the independent variables: C 10.0; N 1.0; Ca²⁺ 0.1; Mg²⁺ 0.5; YE 1.0 and P 3.5/1.0.

Online supplementary table 2. Estimated effects for xylanase production and growth of *Cohnella* sp. strain AR92 from the Plackett-Burman design

Factor	Xylanase Activity			Biomass		
		[IU/ml]			[CFU/ml]	
	Effect	Standard error	<i>p</i> - value	Effect	Standard error	<i>p</i> - value
C	-2.482	0.498	0.000	0.292	0.099	0.009
N	0.988	0.498	0.063	0.192	0.099	0.071
P	2.512	0.498	0.000	0.708	0.099	0.000
YE	4.467	0.498	0.000	1.008	0.099	0.000
Mg ²⁺	2.068	0.498	0.001	-0.058	0.099	0.565
Ca ²⁺	-0.012	0.498	0.982	0.108	0.099	0.291

Online supplementary table 3. Box-Behnken matrix for the three selected factors and their experimental and predicted values of xylanase activity

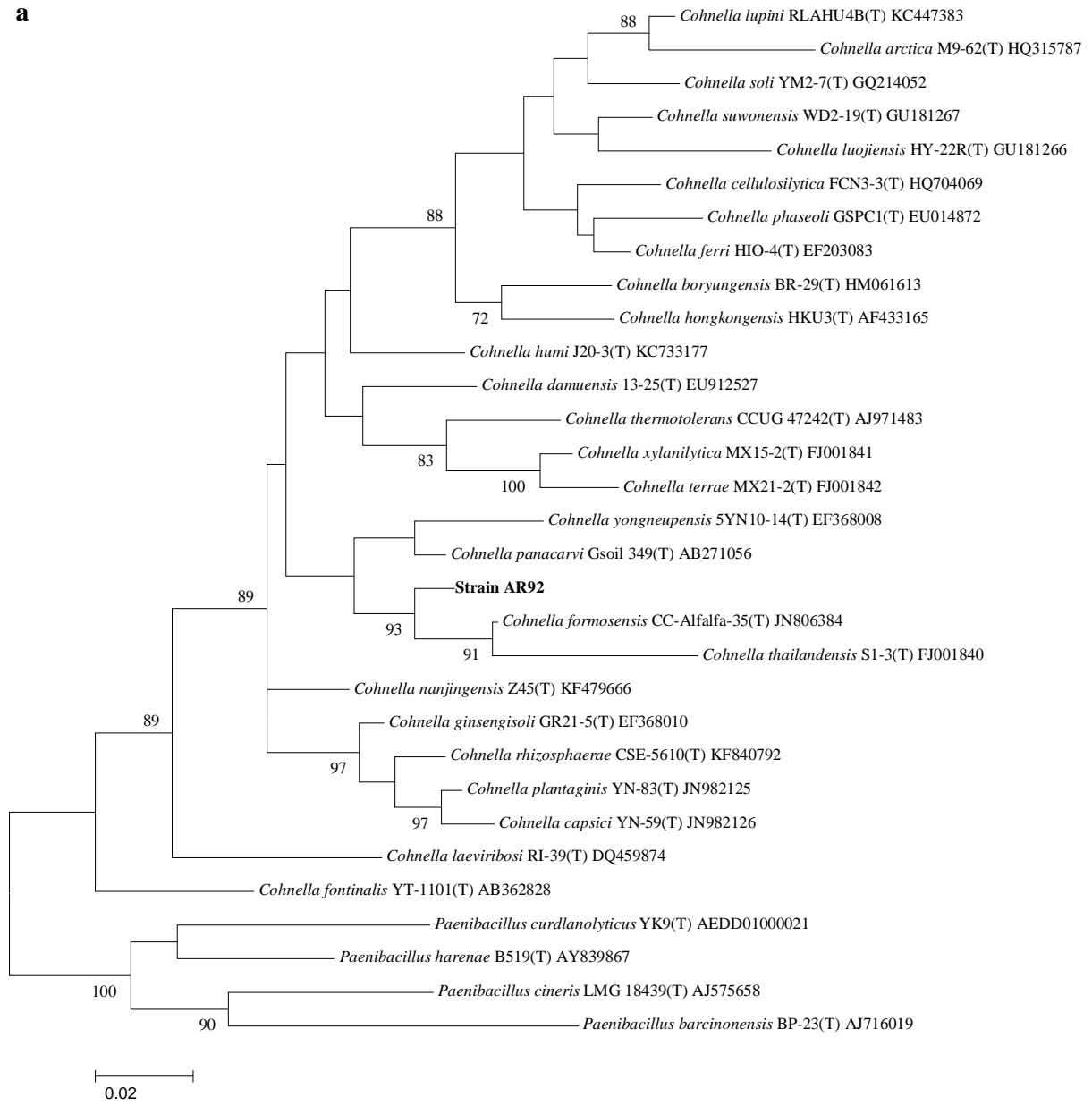
Run	Values (g/l)			Produced EA [IU/ml]	Predicted EA [IU/ml]
	C	YE	P		
1	6.0	1.5	5.25/1.50	14.2	14.5
2	10.0	1.0	1.75/0.50	12.4	12.2
3	6.0	1.0	3.50/1.00	13.9	14.5
4	6.0	1.5	1.75/0.50	11.4	11.9
5	2.0	0.5	3.50/1.00	6.5	6.3
6	2.0	1.0	1.75/0.50	7.2	7.1
7	2.0	1.0	5.25/1.50	8.1	8.6
8	6.0	1.0	3.50/1.00	14.6	14.5
9	6.0	0.5	1.75/0.50	9.9	9.4
10	10.0	0.5	3.50/1.00	9.7	10.3
11	6.0	1.0	3.50/1.00	14.6	14.5
12	6.0	0.5	5.25/1.50	11.3	10.3
13	10.0	1.5	3.50/1.00	14.7	14.8
14	10.0	1.0	5.25/1.50	14.2	14.1
15	2.0	1.5	3.50/1.00	8.9	8.4
16	6.0	1.0	3.50/1.00	14.5	14.5
17	6.0	1.0	3.50/1.00	14.6	15.0
18	2.0	1.5	3.50/1.00	9.7	8.9
19	6.0	1.5	1.75/0.50	12.4	12.5
20	2.0	0.5	3.50/1.00	6.8	6.7
21	10.0	1.0	1.75/0.50	13.4	12.7
22	2.0	1.0	5.25/1.50	8.7	9.1
23	2.0	1.0	1.75/0.50	6.9	7.6
24	6.0	0.5	1.75/0.50	9.7	9.9
25	10.0	0.5	3.50/1.00	10.2	10.8
26	6.0	1.0	3.50/1.00	15.5	15.0
27	6.0	0.5	5.25/1.50	10.6	10.8
28	10.0	1.5	3.50/1.00	15.2	15.4
29	6.0	1.0	3.50/1.00	15.1	15.0
30	10.0	1.0	5.25/1.50	15.1	14.6
31	6.0	1.0	3.50/1.00	15.4	15.0
32	6.0	1.5	5.25/1.50	15.1	15.0

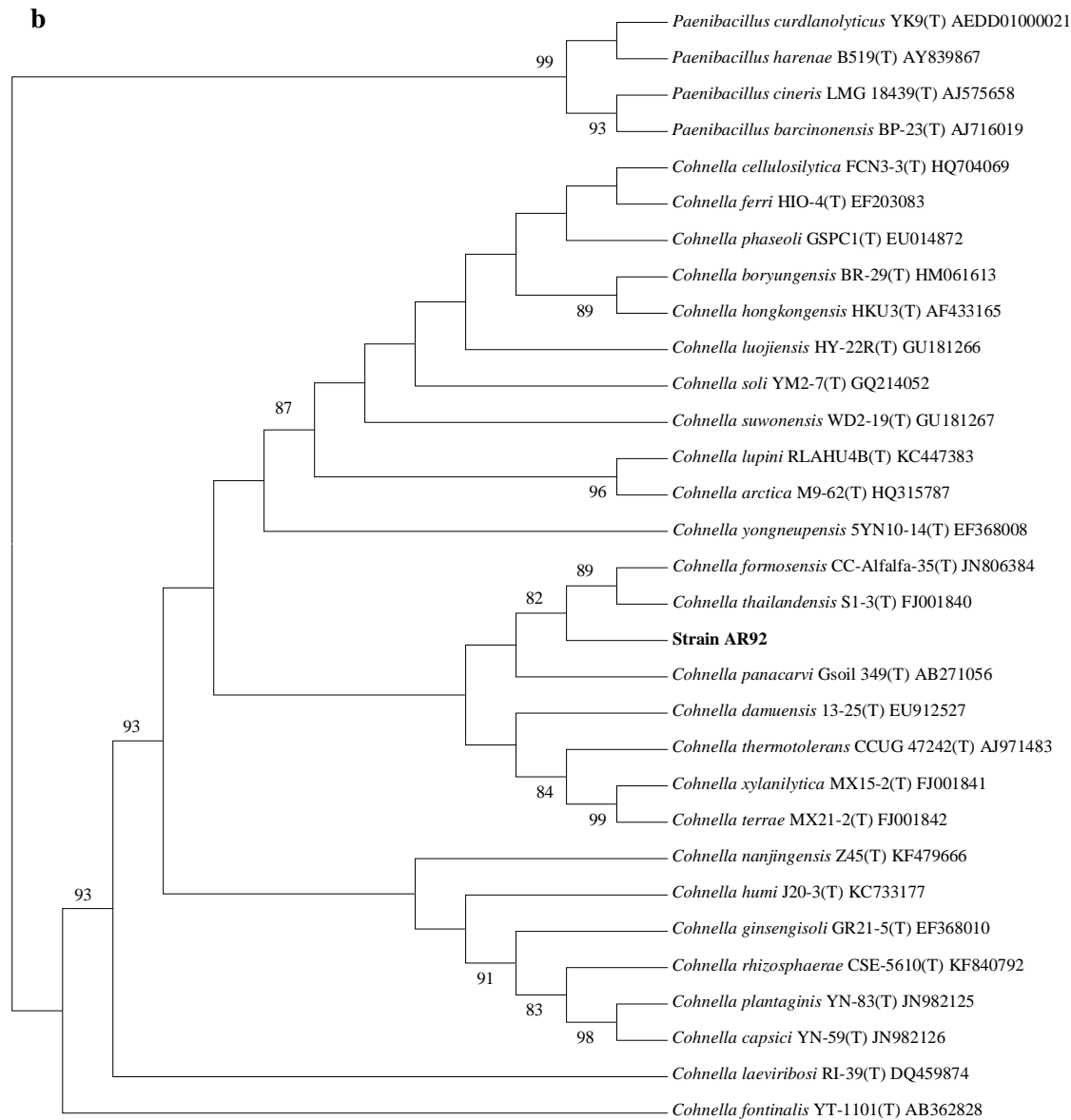
Online supplementary table 4. Estimated effects and statistical analysis for xylanase production from the results of the Box-Behnken design

Estimated effects			ANOVA			
Factor	Effect	Standard error	Sum of squares	Degree of freedom	<i>F</i> -value	<i>p</i> -value
C	5.418	0.262	106.245	1	428.56	0.000
YE	3.194	0.262	36.926	1	148.95	0.000
P	1.735	0.249	12.041	1	48.57	0.000
CC	-5.797	0.361	63.849	1	257.55	0.000
C:YE	1.471	0.387	3.5772	1	14.43	0.001
C:P	0.210	0.352	0.088	1	0.36	0.558
YE:YE	-3.667	0.361	25.548	1	103.06	0.000
YE:P	0.845	0.352	1.428	1	5.76	0.026
P:P	-2.280	0.361	9.881	1	39.86	0.000

Online supplementary figure 1

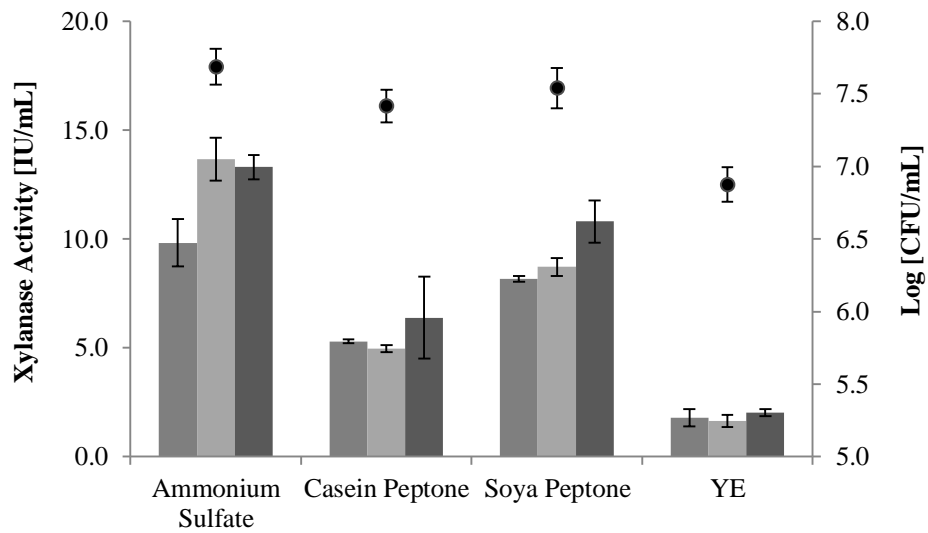
a





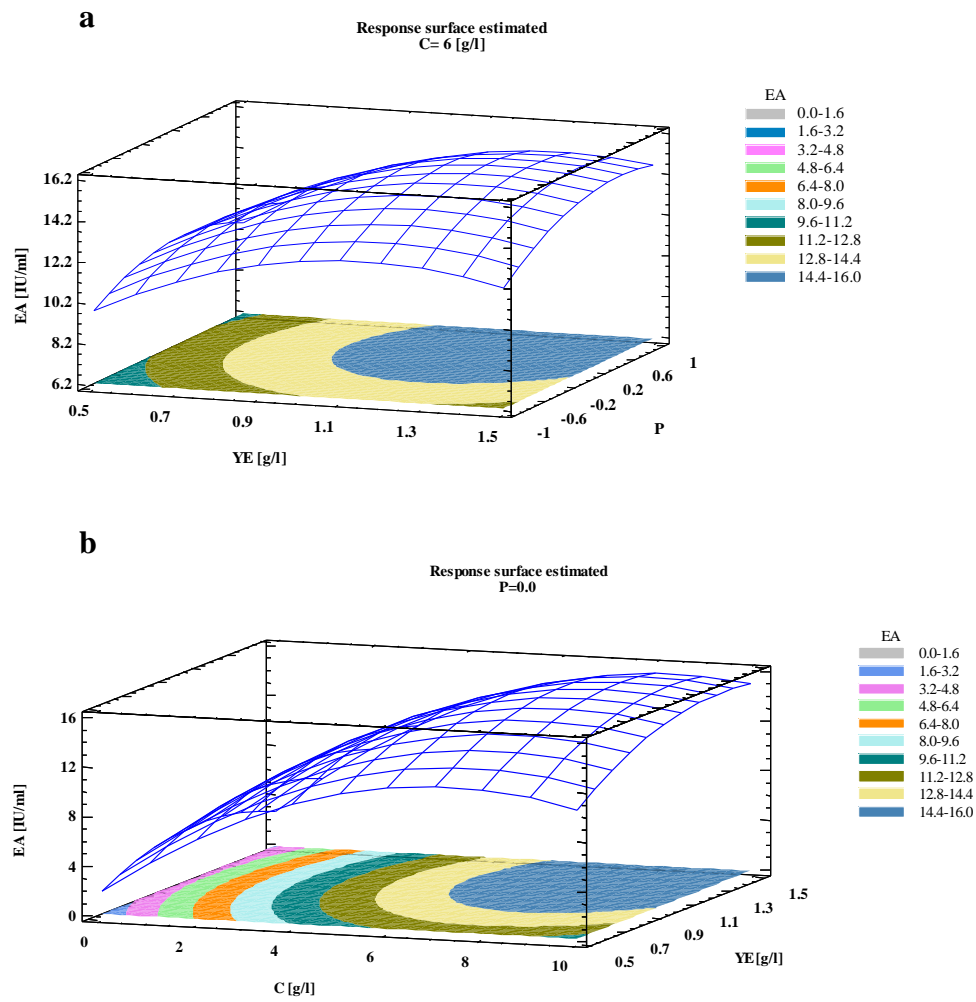
Online supplementary fig. 1. Maximum-likelihood (a) and maximum-parsimony (b) phylogenetic trees based on 16S rRNA gene sequences, showing the position of strain AR92 and related taxa. Bootstrap values are shown as percentages of 100 replicates; only values above 70% are shown. The four species of the genus *Paenibacillus* were used as outgroup. Bar, 0.02 substitutions per nucleotide position. Accession numbers are shown after names.

Online supplementary figure 2



Online supplementary fig. 2. Effect of different nitrogen sources on the *Cohnella* sp. AR92 growth (●, biomass at 96 h) and xylanase production at (■) 48 h; (■) 96 h and (■) 192 h. Error bars represent the standard deviation from at least three independent experiments.

Online supplementary figure 3



Online supplementary fig. 3. Response surface and contour plots of the combined effects on xylanase production (a) of yeast extract and phosphor concentrations, and (b) of yeast extract and carbon (OH-SCB) concentrations.